

Converting Colors

Android(4280423691)

Have a look what the booklet for
Android(4280423691) contains.

Android(4280423691)	3
<i>Conversions</i>	4
<i>Details</i>	6
<i>Harmonies</i>	11
<i>Previews</i>	23
<i>Color Blindness Simulation</i>	26
<i>CSS Examples</i>	29

Color

Android(4280423691)

Conversions

Conversions Part 1

Format	Color
Hex	22150B
RGB	34, 21, 11
RGB Percent	13%, 8%, 4%
CMY	0.8667, 0.9176, 0.9569
CMYK	0.00, 0.38, 0.68, 0.87
HSL	26°, 51%, 9%
HSV	26°, 68%, 13%
XYZ	0.9883, 0.9006, 0.4383
YIQ	23.7470, 10.9580, -0.3540

Conversions

Conversions Part 2

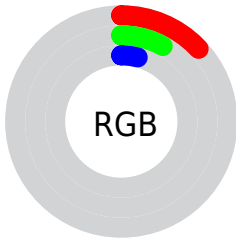
Format	Color
RYB	34, 29, 11
Decimal	2233611
CIELab	8.13, 5.10, 7.75
CIELCh	8, 9.284, 56.644
Yxy	0.9006, 0.4247, 0.3870
Android (android.graphics.Color)	4280423691 (0xFF22150B)
YUV	23.7470, -6.2843, 8.9919
Hunter-Lab	9.4899, 1.9814, 3.9042

Details

The Android color **4280423691** is a dark color, and the websafe version is hex **000000**. A complement of this color would be **4278917154**, and the grayscale version is **4279769112**.

A 20% lighter version of the original color is **4283383607**, and **4278190080** is the 20% darker color. If you saturate the color by 10%, you get **4280423176**, and if you desaturate by 10%, it is **4280424206**.

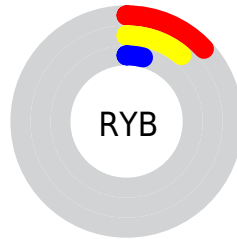
Distribution



Red (13%)

Green (8%)

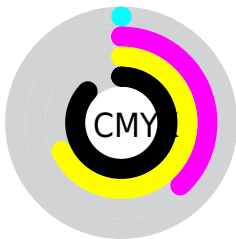
Blue (4%)



Red (13%)

Yellow (11%)

Blue (4%)

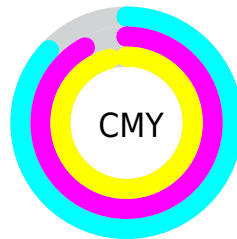


Cyan (0%)

Magenta (38%)

Yellow (68%)

Black (87%)



Cyan (87%)

Magenta (92%)

Yellow (96%)

Brightness & Saturation Gradients

These gradients show how the Android color 4280423691 changes by changing the brightness by 10 percent. The first figure shows a shift by +10% for each color and the second figure -10%.

Similar to the brightness gradients but the following saturation gradients show a change of the Android color 4280423691 by changing the saturation by 10% instead.



4280423691



4280423691



4294964971



4278190080



4283383607



4284962637



4286607205



4288317566



4290093976



4291935923



4293777871



4280423691



4280423691

■ 4280423176

■ 4280424206

■ 4280422660

■ 4280424722

■ 4280422145

■ 4280425237

■ 4280422144

■ 4280425753

■ 4280426268

■ 4280426783

■ 4280427043

■ 4280427558

■ 4280428074

Harmonies

Analogous

The Analogous color harmony consists of three colors that are next to each other on the color wheel.



4280554258



4280423691



4280162055

Triad

The Triadic color harmony groups three colors that are evenly spaced from another and form a triangle on the color wheel.



4280423691



4278590231



4279768611

Complementary

The Complementary color scheme is a pair of colors which are on the opposite of each other on the color wheel.



4280423691



4278917154

Split Complementary

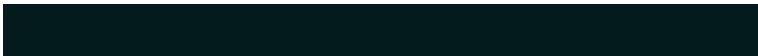
Split-complementary colors differ from the complementary color scheme. The scheme consists of three colors, the original color and two neighbors of the complement color.



4279114020



4280423691



4278393629

Square

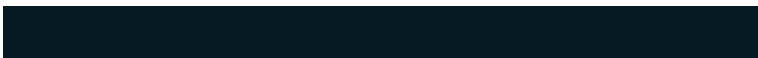
The Square scheme is like the rectangle color scheme, but the four colors are evenly spaced on the color wheel.



4280423691



4279180048



4278589986



4280226847

Rectangle

The Rectangle color scheme consists of four colors that form a rectangle on the color wheel.



4280423691



4279834632



4278589986



4279572259

Sweetspot

The Sweet Spot groups the original color and five complimentary colors.



4280423691



4281017891



4280421144



4279702545



4288059030



4279703319

Same Dimension

The Same Dimension uses a secret algorithm to generate beautiful new colors.



4280423691



4281014280



4280426507



4279374096



4283572992



4291910400

Inverse Universe

The Inverse Universe completely reimagines the original color for something new.



4278917154



4278721579



4278914338



4279243026



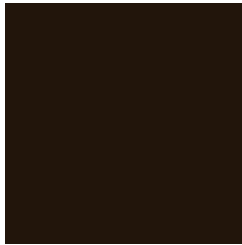
4278201938



4278220497

Previews

White Background



This preview shows how the Android color 4280423691 looks on a white background.

Color Contrast Check

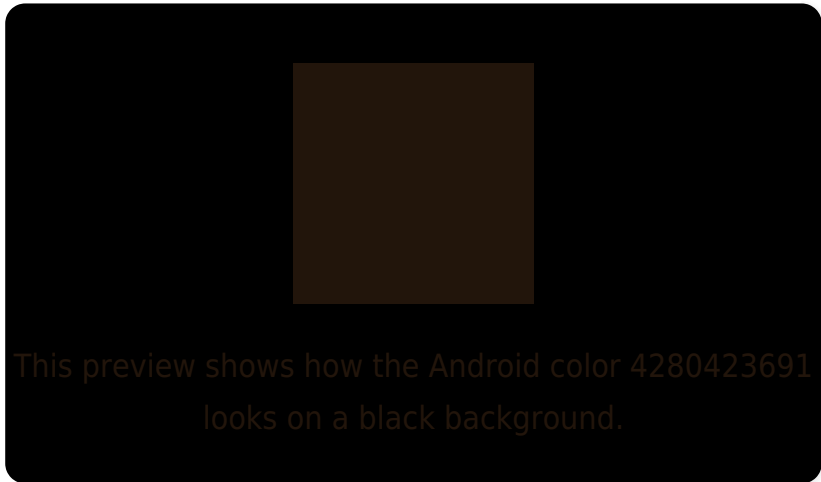
Large Text (above 18pt) WCAG AA ✓ Pass

Any Text WCAG AA ✓ Pass

Large Text (above 18pt) WCAG AAA ✓ Pass

Any Text WCAG AAA ✓ Pass

Black Background



Color Contrast Check

Large Text (above 18pt) WCAG AA × Fail

Any Text WCAG AA × Fail

Large Text (above 18pt) WCAG AAA × Fail

Any Text WCAG AAA × Fail

If you want to check with other color combinations, try the [Color Contrast Checker](#).

Android 4280423691 Background



This preview shows how black text looks on a background with the Android color 4280423691.



This preview shows how white text looks on a background with the Android color 4280423691.

Color Blindness Simulation

Color vision deficiency is a very complex topic, and I could not describe the different causes any better than Wikipedia does, so if you want to learn more, you should check out their [article about color blindness](#).

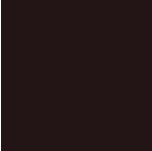
Dichromacy



Original Color
4280423691

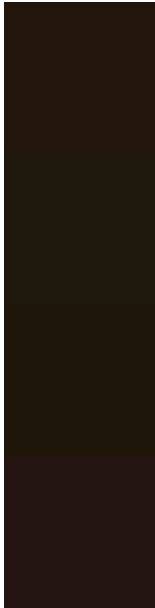
Protanopia
4279965708

Deuteranopia
4280162058



Tritanopia
4280488981

Trichromacy



Original Color

4280423691

Protanomaly

4280162060

Deuteranomaly

4280227338

Tritanomaly

4280488977

Monochromacy



Original Color

4280423691

Achromatopsia

4279769112

Achromatomaly

4280030995

CSS Examples

Text

The CSS property to change the color of the text to Android 4280423691 is called "color". The color property can be set on classes, ids or directly on the HTML element.

This example shows how text in the color `rgb(34, 21, 11)` looks like.

```
.text, #text, p{  
    color:rgb(34, 21, 11)  
}
```

If you want to add a text shadow in that color use the text-shadow property, you can generate a text shadow directly with our [CSS Text Shadow Generator](#).

Here you see how black text with a 4 pixel rgb(34, 21, 11) colored shadow looks like.

```
.shadow{ text-shadow: 4px 4px 2px rgb(34, 21, 11) }
```

Border

The CSS property to change the border of an element to Android 4280423691 is called "border". The border property can be set on classes, ids or directly on the HTML element.

This example shows the color as border, it can be applied via the CSS property "border" or "border-color".

```
.border, #border, table{ border:4px solid rgb(34, 21, 11) }
```

If only the border color should be changed use the property border-color.

```
.border{ border-color:rgb(34, 21, 11) }
```

If you want to add a box shadow in that color use:

Here you see how a box with a 4 pixel rgb(34, 21, 11) colored shadow looks like.

```
.boxshadow{ -moz-box-shadow:4px 4px 4px  
4px rgb(34, 21, 11); -webkit-box-  
shadow:4px 4px 4px 4px rgb(34, 21, 11);  
box-shadow:4px 4px 4px 4px rgb(34, 21, 11)  
}
```

Background

The CSS property to change the background color of an element to Android 4280423691 is called "background". The background property can be set on classes, ids or directly on the HTML element.

```
.background, #background, body{  
background: rgb(34, 21, 11) }
```

If only the background color should be changed can be used:

```
.background{ background-color: rgb(34, 21,  
11) }
```

This example shows the color as background, it is applied via the CSS property "background".

To optimize and compress your CSS code, you can use our [online CSS compressor and optimizer](#) based on csstidy. If you want to create a linear or radial gradient as background or border, check our [CSS Gradient Generator](#).

Hey! You found this booklet interesting? Support Converting Colors with the new Membership Option!

The pro membership hides all ads, plus gives you double the colors in the color bucket, and more awesome pro features!

[Learn more, Memberships starting at \\$2.50/m!](#)

**Follow me
on Twitter!**

@ConvertingColor