

Converting Colors

Android(4280618253)

Have a look what the booklet for
Android(4280618253) contains.

Android(4280618253)	3
<i>Conversions</i>	4
<i>Details</i>	6
<i>Harmonies</i>	11
<i>Previews</i>	23
<i>Color Blindness Simulation</i>	26
<i>CSS Examples</i>	29

Color

Android(4280618253)

Conversions

Conversions Part 1

Format	Color
Hex	250D0D
RGB	37, 13, 13
RGB Percent	15%, 5%, 5%
CMY	0.8549, 0.9490, 0.9490
CMYK	0.00, 0.65, 0.65, 0.85
HSL	0°, 48%, 10%
HSV	0°, 65%, 15%
XYZ	0.9795, 0.7102, 0.4662
YIQ	20.1760, 14.3040, 5.0880

Conversions

Conversions Part 2

Format	Color
R_{YB}	37, 13, 13
Decimal	2428173
CIE Lab	6.42, 12.19, 4.39
CIE LCh	6, 12.957, 19.815
Yxy	0.7102, 0.4543, 0.3294
Android (android.graphics.Color)	4280618253 (0xFF250D0D)
YUV	20.1760, -3.5378, 14.7546
Hunter-Lab	8.4275, 5.9989, 2.6191

Details

The Android color **4280618253** is a dark color, and the websafe version is hex **330000**. A complement of this color would be **4279051557**, and the grayscale version is **4279505940**.

A 20% lighter version of the original color is **4283643960**, and **4278190080** is the 20% darker color. If you saturate the color by 10%, you get **4280617225**, and if you desaturate by 10%, it is **4280619281**.

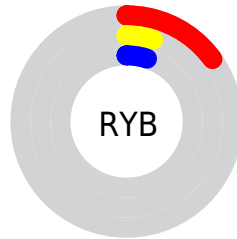
Distribution



Red (15%)

Green (5%)

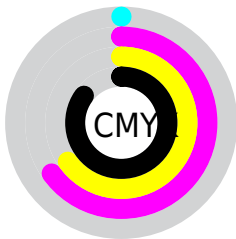
Blue (5%)



Red (15%)

Yellow (5%)

Blue (5%)

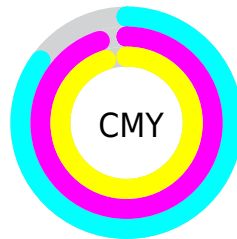


Cyan (0%)

Magenta (65%)

Yellow (65%)

Black (85%)



Cyan (85%)

Magenta (95%)

Yellow (95%)

Brightness & Saturation Gradients

These gradients show how the Android color 4280618253 changes by changing the brightness by 10 percent. The first figure shows a shift by +10% for each color and the second figure -10%.

Similar to the brightness gradients but the following saturation gradients show a change of the Android color 4280618253 by changing the saturation by 10% instead.

 4280618253

 4280618253

 4294962413

 4278190080

 4283643960

 4285222479

 4286932839

 4288643200

 4290419354

 4292261301

 4294168784

 4280618253

 4280618253

■ 4280617225

■ 4280619281

■ 4280616454

■ 4280620052

■ 4280615426

■ 4280621080

■ 4280614912

■ 4280622108

■ 4280623136

■ 4280623907

■ 4280624935

■ 4280625963

■ 4280626734

Harmonies

Analogous

The Analogous color harmony consists of three colors that are next to each other on the color wheel.



4280487192



4280618253



4280487680

Triad

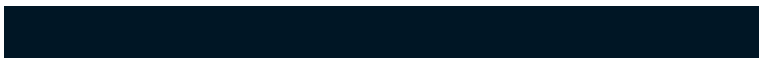
The Triadic color harmony groups three colors that are evenly spaced from another and form a triangle on the color wheel.



4280618253



4278654979



4278195749

Complementary

The Complementary color scheme is a pair of colors which are on the opposite of each other on the color wheel.



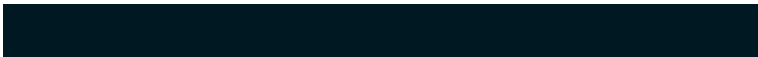
4280618253



4279051557

Split Complementary

Split-complementary colors differ from the complementary color scheme. The scheme consists of three colors, the original color and two neighbors of the complement color.



4278196257



4280618253



4278196752

Square

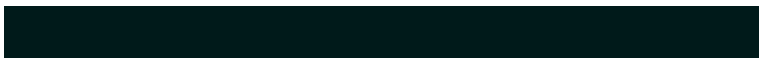
The Square scheme is like the rectangle color scheme, but the four colors are evenly spaced on the color wheel.



4280618253



4279571968



4278196762



4279309092

Rectangle

The Rectangle color scheme consists of four colors that form a rectangle on the color wheel.



4280618253



4280291584



4278196762



4278196004

Sweetspot

The Sweet Spot groups the original color and five complimentary colors.



4280618253



4281345831



4280618277



4279899156



4288256409



4279900698

Same Dimension

The Same Dimension uses a secret algorithm to generate beautiful new colors.



4280618253



4281338635



4280621325



4279373840



4283564032



4291887104

Inverse Universe

The Inverse Universe completely reimagines the original color for something new.



4279051557



4278923312



4279048485



4279243282



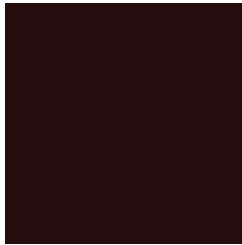
4278211154



4278243793

Previews

White Background



This preview shows how the Android color 4280618253 looks on a white background.

Color Contrast Check

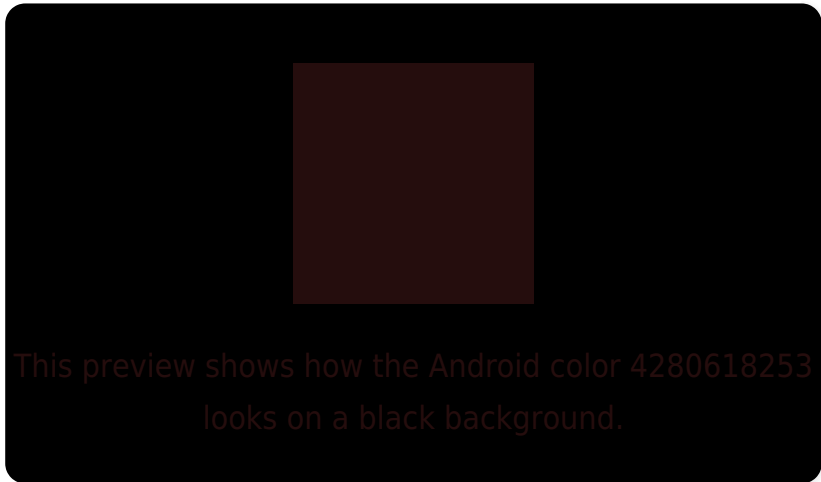
Large Text (above 18pt) WCAG AA ✓ Pass

Any Text WCAG AA ✓ Pass

Large Text (above 18pt) WCAG AAA ✓ Pass

Any Text WCAG AAA ✓ Pass

Black Background



Color Contrast Check

Large Text (above 18pt) WCAG AA × Fail

Any Text WCAG AA × Fail

Large Text (above 18pt) WCAG AAA × Fail

Any Text WCAG AAA × Fail

If you want to check with other color combinations, try the [Color Contrast Checker](#).

Android 4280618253 Background



This preview shows how black text looks on a background with the Android color 4280618253.



This preview shows how white text looks on a background with the Android color 4280618253.

Color Blindness Simulation

Color vision deficiency is a very complex topic, and I could not describe the different causes any better than Wikipedia does, so if you want to learn more, you should check out their [article about color blindness](#).

Dichromacy



Original Color

4280618253

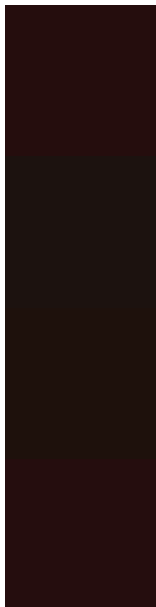
Protanopia

4279702800

Deuteranopia

4279899148

Trichromacy



Original Color

4280618253

Protanomaly

4280029711

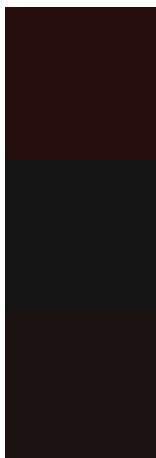
Deuteranomaly

4280160524

Tritanomaly

4280618254

Monochromacy



Original Color

4280618253

Achromatopsia

4279505940

Achromatomaly

4279898385

CSS Examples

Text

The CSS property to change the color of the text to Android 4280618253 is called "color". The color property can be set on classes, ids or directly on the HTML element.

This example shows how text in the color `rgb(37, 13, 13)` looks like.

```
.text, #text, p{  
    color:rgb(37, 13, 13)  
}
```

If you want to add a text shadow in that color use the text-shadow property, you can generate a text shadow directly with our [CSS Text Shadow Generator](#).

Here you see how black text with a 4 pixel rgb(37, 13, 13) colored shadow looks like.

```
.shadow{ text-shadow: 4px 4px 2px rgb(37, 13, 13) }
```

Border

The CSS property to change the border of an element to Android 4280618253 is called "border". The border property can be set on classes, ids or directly on the HTML element.

This example shows the color as border, it can be applied via the CSS property "border" or "border-color".

```
.border, #border, table{ border:4px solid rgb(37, 13, 13) }
```

If only the border color should be changed use the property `border-color`.

```
.border{ border-color:rgb(37, 13, 13) }
```

If you want to add a box shadow in that color use:

Here you see how a box with a 4 pixel `rgb(37, 13, 13)` colored shadow looks like.

```
.boxshadow{ -moz-box-shadow:4px 4px 4px  
4px rgb(37, 13, 13); -webkit-box-  
shadow:4px 4px 4px 4px rgb(37, 13, 13);  
box-shadow:4px 4px 4px 4px rgb(37, 13, 13)  
}
```

Background

The CSS property to change the background color of an element to Android 4280618253 is called "background". The background property can be set on classes, ids or directly on the HTML element.

```
.background, #background, body{  
background: rgb(37, 13, 13) }
```

If only the background color should be changed can be used:

```
.background{ background-color: rgb(37, 13,  
13) }
```

This example shows the color as background, it is applied via the CSS property "background".

To optimize and compress your CSS code, you can use our [online CSS compressor and optimizer](#) based on csstidy. If you want to create a linear or radial gradient as background or border, check our [CSS Gradient Generator](#).

Hey! You found this booklet interesting? Support Converting Colors with the new Membership Option!

The pro membership hides all ads, plus gives you double the colors in the color bucket, and more awesome pro features!

[Learn more, Memberships starting at \\$2.50/m!](#)

**Follow me
on Twitter!**

@ConvertingColor