

Converting Colors

Android(4280683544)

Have a look what the booklet for
Android(4280683544) contains.

Android(4280683544)	3
<i>Conversions</i>	4
<i>Details</i>	6
<i>Harmonies</i>	11
<i>Previews</i>	23
<i>Color Blindness Simulation</i>	26
<i>CSS Examples</i>	29

Color

Android(4280683544)

Conversions

Conversions Part 1

Format	Color
Hex	260C18
RGB	38, 12, 24
RGB Percent	15%, 5%, 9%
CMY	0.8510, 0.9529, 0.9059
CMYK	0.00, 0.68, 0.37, 0.85
HSL	332°, 52%, 10%
HSV	332°, 68%, 15%
XYZ	1.0957, 0.7410, 0.9494
YIQ	21.1420, 11.6440, 9.2440

Conversions

Conversions Part 2

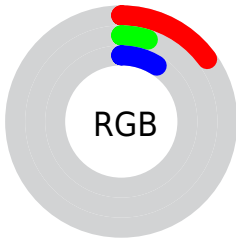
Format	Color
R_{YB}	38, 12, 24
Decimal	2493464
CIE Lab	6.69, 15.13, -2.04
CIE LCh	7, 15.271, 352.322
Yxy	0.7410, 0.3933, 0.2660
Android (android.graphics.Color)	4280683544 (0xFF260C18)
YUV	21.1420, 1.4090, 14.7845
Hunter-Lab	8.6079, 7.6568, -0.5140

Details

The Android color **4280683544** is a dark color, and the websafe version is hex **330000**. A complement of this color would be **4278986266**, and the grayscale version is **4279571733**.

A 20% lighter version of the original color is **4283709251**, and **4278190080** is the 20% darker color. If you saturate the color by 10%, you get **4280682518**, and if you desaturate by 10%, it is **4280684570**.

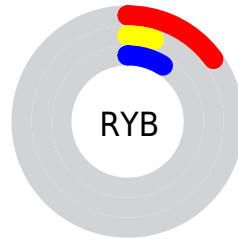
Distribution



Red (15%)

Green (5%)

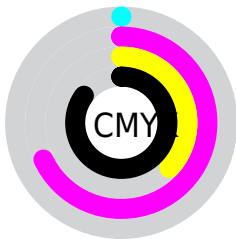
Blue (9%)



Red (15%)

Yellow (5%)

Blue (9%)

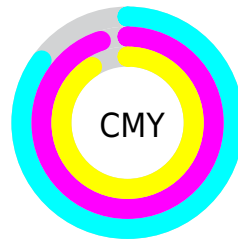


Cyan (0%)

Magenta (68%)

Yellow (37%)

Black (85%)



Cyan (85%)

Magenta (95%)

Yellow (91%)

Brightness & Saturation Gradients

These gradients show how the Android color 4280683544 changes by changing the brightness by 10 percent. The first figure shows a shift by +10% for each color and the second figure -10%.

Similar to the brightness gradients but the following saturation gradients show a change of the Android color 4280683544 by changing the saturation by 10% instead.



4280683544



4280683544



4294962426



4278321152



4283709251



4278190080



4285353562



4286998130



4288774028



4290550182



4292392129



4294234077



4280683544



4280683544

■ 4280682518

■ 4280684570

■ 4280681492

■ 4280685596

■ 4280680722

■ 4280686366

■ 4280680466

■ 4280687392

■ 4280688418

■ 4280689444

■ 4280690470

■ 4280691240

■ 4280692266

Harmonies

Analogous

The Analogous color harmony consists of three colors that are next to each other on the color wheel.



4280225569



4280683544



4280814603

Triad

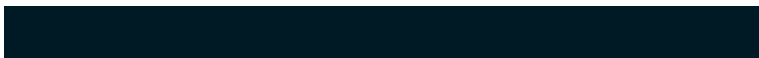
The Triadic color harmony groups three colors that are evenly spaced from another and form a triangle on the color wheel.



4280683544



4279506688



4278196773

Complementary

The Complementary color scheme is a pair of colors which are on the opposite of each other on the color wheel.



4280683544



4278986266

Split Complementary

Split-complementary colors differ from the complementary color scheme. The scheme consists of three colors, the original color and two neighbors of the complement color.



4278197020



4280683544



4278458625

Square

The Square scheme is like the rectangle color scheme, but the four colors are evenly spaced on the color wheel.



4280683544



4280161024



4278197009



4278196009

Rectangle

The Rectangle color scheme consists of four colors that form a rectangle on the color wheel.



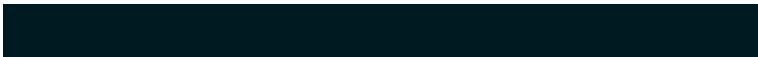
4280683544



4280749568



4278197009



4278196770

Sweetspot

The Sweet Spot groups the original color and five complimentary colors.



4280683544



4281345579



4279897126



4279898902



4288256409



4279900698

Same Dimension

The Same Dimension uses a secret algorithm to generate beautiful new colors.



4280683544



4281338139



4280683788



4279373841



4283564070



4291887201

Inverse Universe

The Inverse Universe completely reimagines the original color for something new.



4280683544



4281338139



4278986022



4279373841



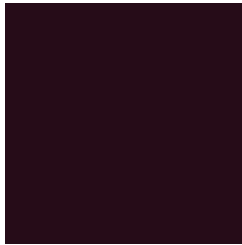
4283564070



4291887201

Previews

White Background



This preview shows how the Android color 4280683544 looks on a white background.

Color Contrast Check

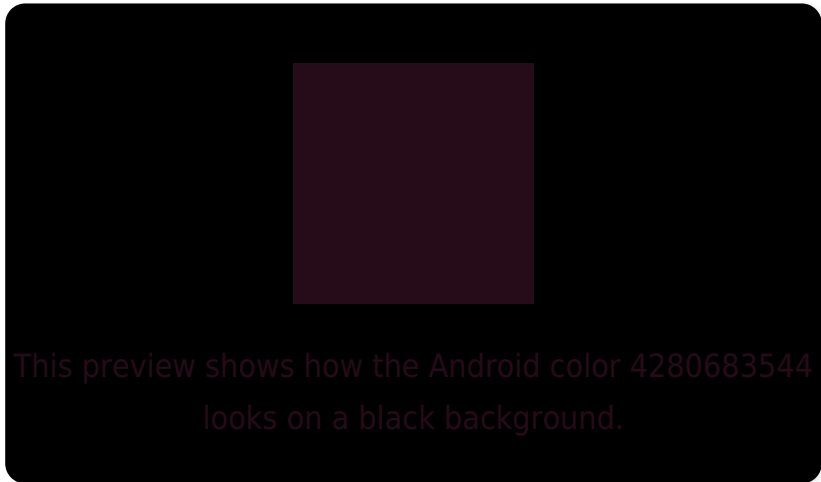
Large Text (above 18pt) WCAG AA ✓ Pass

Any Text WCAG AA ✓ Pass

Large Text (above 18pt) WCAG AAA ✓ Pass

Any Text WCAG AAA ✓ Pass

Black Background



Color Contrast Check

Large Text (above 18pt) WCAG AA × Fail

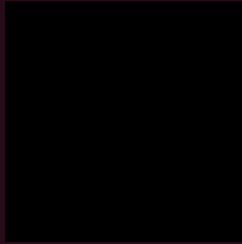
Any Text WCAG AA × Fail

Large Text (above 18pt) WCAG AAA × Fail

Any Text WCAG AAA × Fail

If you want to check with other color combinations, try the [Color Contrast Checker](#).

Android 4280683544 Background



This preview shows how black text looks on a background with the Android color 4280683544.



This preview shows how white text looks on a background with the Android color 4280683544.

Color Blindness Simulation

Color vision deficiency is a very complex topic, and I could not describe the different causes any better than Wikipedia does, so if you want to learn more, you should check out their [article about color blindness](#).

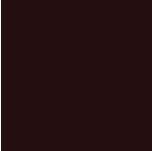
Dichromacy



Original Color
4280683544

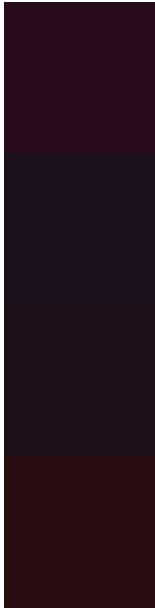
Protanopia
4279506462

Deuteranopia
4279768343



Tritanopia
4280618511

Trichromacy



Original Color

4280683544

Protanomaly

4279964188

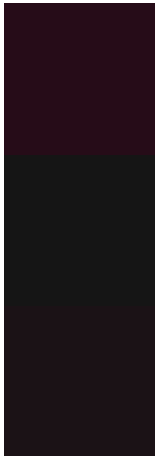
Deuteranomaly

4280095255

Tritanomaly

4280618258

Monochromacy



Original Color

4280683544

Achromatopsia

4279571733

Achromatomaly

4279964182

CSS Examples

Text

The CSS property to change the color of the text to Android 4280683544 is called "color". The color property can be set on classes, ids or directly on the HTML element.

This example shows how text in the color `rgb(38, 12, 24)` looks like.

```
.text, #text, p{  
    color:rgb(38, 12, 24)  
}
```

If you want to add a text shadow in that color use the text-shadow property, you can generate a text shadow directly with our [CSS Text Shadow Generator](#).

Here you see how black text with a 4 pixel rgb(38, 12, 24) colored shadow looks like.

```
.shadow{ text-shadow: 4px 4px 2px rgb(38, 12, 24) }
```

Border

The CSS property to change the border of an element to Android 4280683544 is called "border". The border property can be set on classes, ids or directly on the HTML element.

This example shows the color as border, it can be applied via the CSS property "border" or "border-color".

```
.border, #border, table{ border:4px solid rgb(38, 12, 24) }
```

If only the border color should be changed use the property border-color.

```
.border{ border-color:rgb(38, 12, 24) }
```

If you want to add a box shadow in that color use:

Here you see how a box with a 4 pixel rgb(38, 12, 24) colored shadow looks like.

```
.boxshadow{ -moz-box-shadow:4px 4px 4px  
4px rgb(38, 12, 24); -webkit-box-  
shadow:4px 4px 4px 4px rgb(38, 12, 24);  
box-shadow:4px 4px 4px 4px rgb(38, 12, 24)  
}
```

Background

The CSS property to change the background color of an element to Android 4280683544 is called "background". The background property can be set on classes, ids or directly on the HTML element.

```
.background, #background, body{  
background: rgb(38, 12, 24) }
```

If only the background color should be changed can be used:

```
.background{ background-color: rgb(38, 12,  
24) }
```

This example shows the color as background, it is applied via the CSS property "background".

To optimize and compress your CSS code, you can use our [online CSS compressor and optimizer](#) based on csstidy. If you want to create a linear or radial gradient as background or border, check our [CSS Gradient Generator](#).

Hey! You found this booklet interesting? Support Converting Colors with the new Membership Option!

The pro membership hides all ads, plus gives you double the colors in the color bucket, and more awesome pro features!

[Learn more, Memberships starting at \\$2.50/m!](#)

**Follow me
on Twitter!**

@ConvertingColor