

Converting Colors

Android(4280752394)

Have a look what the booklet for
Android(4280752394) contains.

| | |
|--|----|
| Android(4280752394) | 3 |
| <i>Conversions</i> | 4 |
| <i>Details</i> | 6 |
| <i>Harmonies</i> | 11 |
| <i>Previews</i> | 23 |
| <i>Color Blindness Simulation</i> | 26 |
| <i>CSS Examples</i> | 29 |

Color

Android(4280752394)

Conversions

Conversions Part 1

| Format | Color |
|-------------|---------------------------|
| Hex | 27190A |
| RGB | 39, 25, 10 |
| RGB Percent | 15%, 10%, 4% |
| CMY | 0.8471, 0.9020, 0.9608 |
| CMYK | 0.00, 0.36, 0.74, 0.85 |
| HSL | 31°, 59%, 10% |
| HSV | 31°, 74%, 15% |
| XYZ | 1.2391, 1.1485, 0.4435 |
| YIQ | 27.4760, 13.1590, -1.6970 |

Conversions

Conversions Part 2

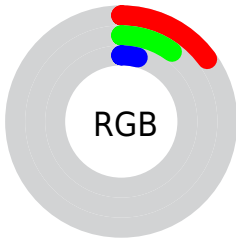
| Format | Color |
|-------------------------------------|--|
| RYB | 37, 39, 10 |
| Decimal | 2562314 |
| CIELab | 10.17, 4.87, 11.19 |
| CIElCh | 10, 12.206, 66.498 |
| Yxy | 1.1485, 0.4377, 0.4057 |
| Android (android.graphics.Color) | 4280752394 (0xFF27190A) |
| YUV | 27.4760, -8.6157, 10.1065 |
| Hunter-Lab | 10.7169, 1.8842, 5.0480 |

Details

The Android color **4280752394** is a dark color, and the websafe version is hex **000000**. A complement of this color would be **4278851623**, and the grayscale version is **4280032284**.

A 20% lighter version of the original color is **4283778102**, and **4278190080** is the 20% darker color. If you saturate the color by 10%, you get **4280751878**, and if you desaturate by 10%, it is **4280752910**.

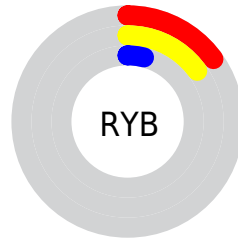
Distribution



Red (15%)

Green (10%)

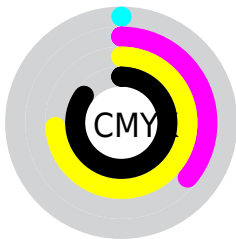
Blue (4%)



Red (15%)

Yellow (15%)

Blue (4%)

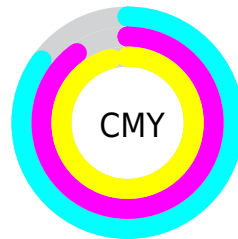


Cyan (0%)

Magenta (36%)

Yellow (74%)

Black (85%)



Cyan (85%)

Magenta (90%)

Yellow (96%)

Brightness & Saturation Gradients

These gradients show how the Android color 4280752394 changes by changing the brightness by 10 percent. The first figure shows a shift by +10% for each color and the second figure -10%.

Similar to the brightness gradients but the following saturation gradients show a change of the Android color 4280752394 by changing the saturation by 10% instead.



4280752394



4280752394



4294966506



4279042048



4283778102



4278190080



4285356877



4287067237



4288777598



4290619544



4292461490



4294303694



4280752394



4280752394

■ 4280751878

■ 4280752910

■ 4280751362

■ 4280753426

■ 4280751104

■ 4280753942

■ 4280754458

■ 4280754718

■ 4280755233

■ 4280755749

■ 4280756265

■ 4280756781

Harmonies

Analogous

The Analogous color harmony consists of three colors that are next to each other on the color wheel.



4281013778



4280752394



4280294407

Triad

The Triadic color harmony groups three colors that are evenly spaced from another and form a triangle on the color wheel.



4280752394



4278329373



4280228137

Complementary

The Complementary color scheme is a pair of colors which are on the opposite of each other on the color wheel.



4280752394



4278851623

Split Complementary

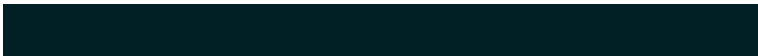
Split-complementary colors differ from the complementary color scheme. The scheme consists of three colors, the original color and two neighbors of the complement color.



4279442476



4280752394



4278198309

Square

The Square scheme is like the rectangle color scheme, but the four colors are evenly spaced on the color wheel.



4280752394



4278984725



4278459947



4280817187

Rectangle

The Rectangle color scheme consists of four colors that form a rectangle on the color wheel.



4280752394



4279901450



4278459947



4279966251

Sweetspot

The Sweet Spot groups the original color and five complimentary colors.



4280752394



4281544232



4280748568



4279899667



4288256409



4279900698

Same Dimension

The Same Dimension uses a secret algorithm to generate beautiful new colors.



4280752394



4281539846



4280755978



4279505682



4283706368



4292111616

Inverse Universe

The Inverse Universe completely reimagines the original color for something new.



4278851623



4278590515



4278848039



4279374612



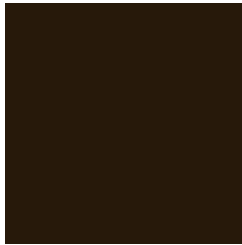
4278200660



4278216404

Previews

White Background



This preview shows how the Android color 4280752394 looks on a white background.

Color Contrast Check

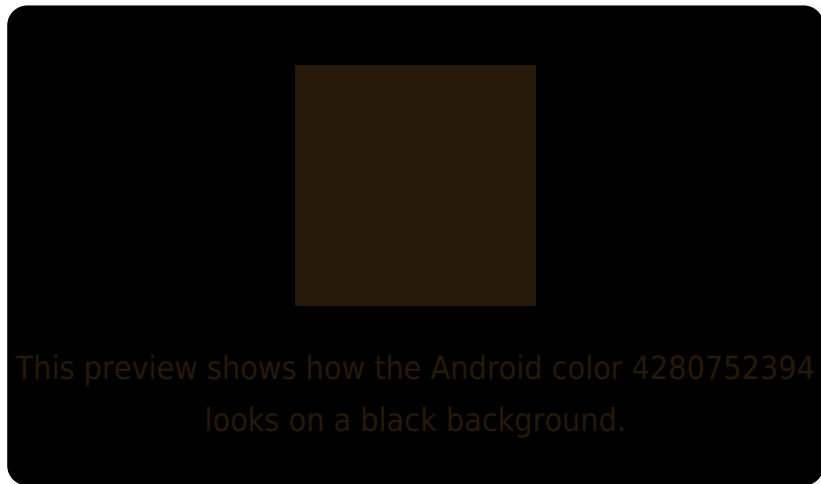
Large Text (above 18pt) WCAG AA ✓ Pass

Any Text WCAG AA ✓ Pass

Large Text (above 18pt) WCAG AAA ✓ Pass

Any Text WCAG AAA ✓ Pass

Black Background



Color Contrast Check

Large Text (above 18pt) WCAG AA × Fail

Any Text WCAG AA × Fail

Large Text (above 18pt) WCAG AAA × Fail

Any Text WCAG AAA × Fail

If you want to check with other color combinations, try the [Color Contrast Checker](#).

Android 4280752394 Background



This preview shows how black text looks on a background with the Android color 4280752394.



This preview shows how white text looks on a background with the Android color 4280752394.

Color Blindness Simulation

Color vision deficiency is a very complex topic, and I could not describe the different causes any better than Wikipedia does, so if you want to learn more, you should check out their [article about color blindness](#).

Dichromacy

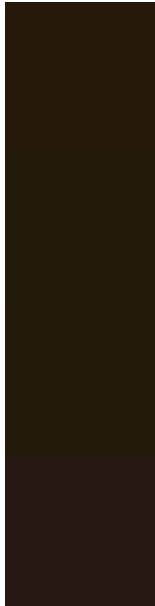


Original Color
4280752394

Protanopia
4280228875

Deuteranopia
4280490761

Trichromacy



Original Color

4280752394

Protanomaly

4280425227

Deuteranomaly

4280556041

Tritanomaly

4280817684

Monochromacy



Original Color

4280752394

Achromatopsia

4279966491

Achromatomaly

4280228373

CSS Examples

Text

The CSS property to change the color of the text to Android 4280752394 is called "color". The color property can be set on classes, ids or directly on the HTML element.

This example shows how text in the color `rgb(39, 25, 10)` looks like.

```
.text, #text, p{  
    color:rgb(39, 25, 10)  
}
```

If you want to add a text shadow in that color use the text-shadow property, you can generate a text shadow directly with our [CSS Text Shadow Generator](#).

Here you see how black text with a 4 pixel rgb(39, 25, 10) colored shadow looks like.

```
.shadow{ text-shadow: 4px 4px 2px rgb(39, 25, 10) }
```

Border

The CSS property to change the border of an element to Android 4280752394 is called "border". The border property can be set on classes, ids or directly on the HTML element.

This example shows the color as border, it can be applied via the CSS property "border" or "border-color".

```
.border, #border, table{ border:4px solid rgb(39, 25, 10) }
```

If only the border color should be changed use the property `border-color`.

```
.border{ border-color:rgb(39, 25, 10) }
```

If you want to add a box shadow in that color use:

Here you see how a box with a 4 pixel `rgb(39, 25, 10)` colored shadow looks like.

```
.boxshadow{ -moz-box-shadow:4px 4px 4px  
4px rgb(39, 25, 10); -webkit-box-  
shadow:4px 4px 4px 4px rgb(39, 25, 10);  
box-shadow:4px 4px 4px 4px rgb(39, 25, 10)  
}
```

Background

The CSS property to change the background color of an element to Android 4280752394 is called "background". The background property can be set on classes, ids or directly on the HTML element.

```
.background, #background, body{  
background: rgb(39, 25, 10) }
```

If only the background color should be changed can be used:

```
.background{ background-color: rgb(39, 25,  
10) }
```

This example shows the color as background, it is applied via the CSS property "background".

To optimize and compress your CSS code, you can use our [online CSS compressor and optimizer](#) based on csstidy. If you want to create a linear or radial gradient as background or border, check our [CSS Gradient Generator](#).

Hey! You found this booklet interesting? Support Converting Colors with the new Membership Option!

The pro membership hides all ads, plus gives you double the colors in the color bucket, and more awesome pro features!

[Learn more, Memberships starting at \\$2.50/m!](#)

**Follow me
on Twitter!**

@ConvertingColor