

Converting Colors

Android(4280883724)

Have a look what the booklet for
Android(4280883724) contains.

Android(4280883724)	3
<i>Conversions</i>	4
<i>Details</i>	6
<i>Harmonies</i>	11
<i>Previews</i>	23
<i>Color Blindness Simulation</i>	26
<i>CSS Examples</i>	29

Color

Android(4280883724)

Conversions

Conversions Part 1

Format	Color
Hex	291A0C
RGB	41, 26, 12
RGB Percent	16%, 10%, 5%
CMY	0.8392, 0.8980, 0.9529
CMYK	0.00, 0.37, 0.71, 0.84
HSL	29°, 55%, 10%
HSV	29°, 71%, 16%
XYZ	1.3502, 1.2368, 0.5154
YIQ	28.8890, 13.4340, -1.1740

Conversions

Conversions Part 2

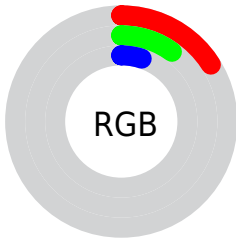
Format	Color
RYB	41, 39, 12
Decimal	2693644
CIELab	10.83, 5.47, 11.29
CIElCh	11, 12.547, 64.173
Yxy	1.2368, 0.4352, 0.3987
Android (android.graphics.Color)	4280883724 (0xFF291A0C)
YUV	28.8890, -8.3263, 10.6213
Hunter-Lab	11.1209, 2.2103, 5.0370

Details

The Android color **4280883724** is a dark color, and the websafe version is hex **333333**. A complement of this color would be **4278983465**, and the grayscale version is **4280098077**.

A 20% lighter version of the original color is **4283909431**, and **4278190080** is the 20% darker color. If you saturate the color by 10%, you get **4280883208**, and if you desaturate by 10%, it is **4280884240**.

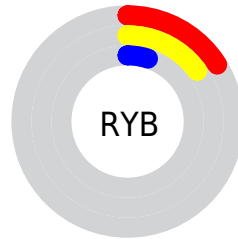
Distribution



Red (16%)

Green (10%)

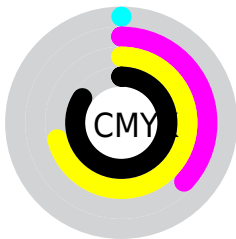
Blue (5%)



Red (16%)

Yellow (15%)

Blue (5%)

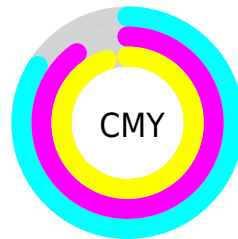


Cyan (0%)

Magenta (37%)

Yellow (71%)

Black (84%)



Cyan (84%)

Magenta (90%)

Yellow (95%)

Brightness & Saturation Gradients

These gradients show how the Android color 4280883724 changes by changing the brightness by 10 percent. The first figure shows a shift by +10% for each color and the second figure -10%.

Similar to the brightness gradients but the following saturation gradients show a change of the Android color 4280883724 by changing the saturation by 10% instead.



4280883724



4280883724



4294966764



4279304192



4283909431



4278190080



4285553998



4287264102



4288974719



4290816409



4292658612



4294500559



4280883724



4280883724

■ 4280883208

■ 4280884240

■ 4280882692

■ 4280884756

■ 4280882176

■ 4280885272

■ 4280885788

■ 4280886561

■ 4280887077

■ 4280887593

■ 4280888109

■ 4280888625

Harmonies

Analogous

The Analogous color harmony consists of three colors that are next to each other on the color wheel.



4281145108



4280883724



4280425737

Triad

The Triadic color harmony groups three colors that are evenly spaced from another and form a triangle on the color wheel.



4280883724



4278395422



4280293931

Complementary

The Complementary color scheme is a pair of colors which are on the opposite of each other on the color wheel.



4280883724



4278983465

Split Complementary

Split-complementary colors differ from the complementary color scheme. The scheme consists of three colors, the original color and two neighbors of the complement color.



4279377454



4280883724



4278198566

Square

The Square scheme is like the rectangle color scheme, but the four colors are evenly spaced on the color wheel.



4280883724



4279116053



4278394924



4280883237

Rectangle

The Rectangle color scheme consists of four colors that form a rectangle on the color wheel.



4280883724



4280033035



4278394924



4280032301

Sweetspot

The Sweet Spot groups the original color and five complimentary colors.



4280883724



4281741354



4280880155



4280031253



4288453788



4280032284

Same Dimension

The Same Dimension uses a secret algorithm to generate beautiful new colors.



4280883724



4281736712



4280887308



4279505682



4283705600



4292109824

Inverse Universe

The Inverse Universe completely reimagines the original color for something new.



4278983465



4278722614



4278979881



4279374612



4278201428



4278218196

Previews

White Background



This preview shows how the Android color 4280883724 looks on a white background.

Color Contrast Check

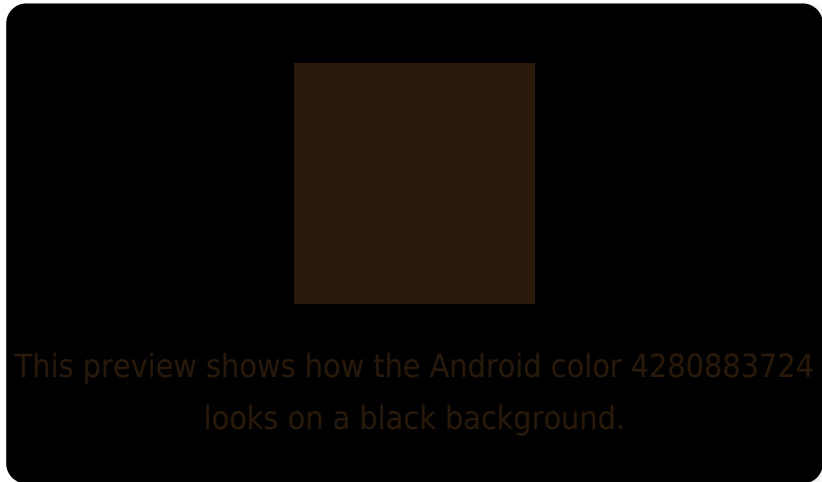
Large Text (above 18pt) WCAG AA ✓ Pass

Any Text WCAG AA ✓ Pass

Large Text (above 18pt) WCAG AAA ✓ Pass

Any Text WCAG AAA ✓ Pass

Black Background



Color Contrast Check

Large Text (above 18pt) WCAG AA × Fail

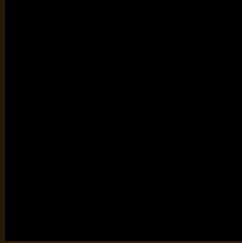
Any Text WCAG AA × Fail

Large Text (above 18pt) WCAG AAA × Fail

Any Text WCAG AAA × Fail

If you want to check with other color combinations, try the [Color Contrast Checker](#).

Android 4280883724 Background



This preview shows how black text looks on a background with the Android color 4280883724.



This preview shows how white text looks on a background with the Android color 4280883724.

Color Blindness Simulation

Color vision deficiency is a very complex topic, and I could not describe the different causes any better than Wikipedia does, so if you want to learn more, you should check out their [article about color blindness](#).

Dichromacy



Original Color

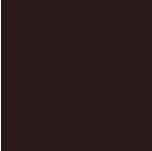
4280883724

Protanopia

4280360461

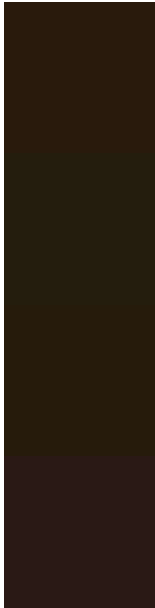
Deuteranopia

4280622091



Tritanopia
4280948762

Trichromacy



Original Color

4280883724

Protanomaly

4280556813

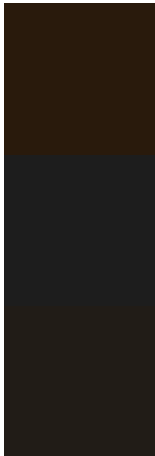
Deuteranomaly

4280687371

Tritanomaly

4280949013

Monochromacy



Original Color

4280883724

Achromatopsia

4280098077

Achromatomaly

4280359959

CSS Examples

Text

The CSS property to change the color of the text to Android 4280883724 is called "color". The color property can be set on classes, ids or directly on the HTML element.

This example shows how text in the color `rgb(41, 26, 12)` looks like.

```
.text, #text, p{  
    color:rgb(41, 26, 12)  
}
```

If you want to add a text shadow in that color use the text-shadow property, you can generate a text shadow directly with our [CSS Text Shadow Generator](#).

Here you see how black text with a 4 pixel rgb(41, 26, 12) colored shadow looks like.

```
.shadow{ text-shadow: 4px 4px 2px rgb(41, 26, 12) }
```

Border

The CSS property to change the border of an element to Android 4280883724 is called "border". The border property can be set on classes, ids or directly on the HTML element.

This example shows the color as border, it can be applied via the CSS property "border" or "border-color".

```
.border, #border, table{ border:4px solid rgb(41, 26, 12) }
```

If only the border color should be changed use the property border-color.

```
.border{ border-color:rgb(41, 26, 12) }
```

If you want to add a box shadow in that color use:

Here you see how a box with a 4 pixel rgb(41, 26, 12) colored shadow looks like.

```
.boxshadow{ -moz-box-shadow:4px 4px 4px  
4px rgb(41, 26, 12); -webkit-box-  
shadow:4px 4px 4px 4px rgb(41, 26, 12);  
box-shadow:4px 4px 4px 4px rgb(41, 26, 12)  
}
```

Background

The CSS property to change the background color of an element to Android 4280883724 is called "background". The background property can be set on classes, ids or directly on the HTML element.

```
.background, #background, body{  
background: rgb(41, 26, 12) }
```

If only the background color should be changed can be used:

```
.background{ background-color: rgb(41, 26,  
12) }
```

This example shows the color as background, it is applied via the CSS property "background".

To optimize and compress your CSS code, you can use our [online CSS compressor and optimizer](#) based on csstidy. If you want to create a linear or radial gradient as background or border, check our [CSS Gradient Generator](#).

Hey! You found this booklet interesting? Support Converting Colors with the new Membership Option!

The pro membership hides all ads, plus gives you double the colors in the color bucket, and more awesome pro features!

[Learn more, Memberships starting at \\$2.50/m!](#)

**Follow me
on Twitter!**

@ConvertingColor