

Converting Colors

Android(4281014793)

Have a look what the booklet for
Android(4281014793) contains.

Android(4281014793)	3
<i>Conversions</i>	4
<i>Details</i>	6
<i>Harmonies</i>	11
<i>Previews</i>	23
<i>Color Blindness Simulation</i>	26
<i>CSS Examples</i>	29

Color

Android(4281014793)

Conversions

Conversions Part 1

Format	Color
Hex	2B1A09
RGB	43, 26, 9
RGB Percent	17%, 10%, 4%
CMY	0.8314, 0.8980, 0.9647
CMYK	0.00, 0.40, 0.79, 0.83
HSL	30°, 65%, 10%
HSV	30°, 79%, 17%
XYZ	1.4150, 1.2721, 0.4294
YIQ	29.1450, 15.5890, -1.6830

Conversions

Conversions Part 2

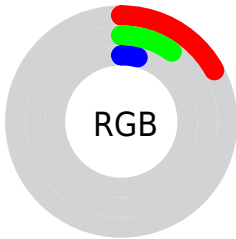
Format	Color
RYB	43, 43, 9
Decimal	2824713
CIELab	11.08, 6.28, 12.96
CIELCh	11, 14.401, 64.145
Yxy	1.2721, 0.4540, 0.4082
Android (android.graphics.Color)	4281014793 (0xFF2B1A09)
YUV	29.1450, -9.9315, 12.1508
Hunter-Lab	11.2788, 2.6557, 5.6378

Details

The Android color **4281014793** is a dark color, and the websafe version is hex **333333**. A complement of this color would be **4278786603**, and the grayscale version is **4280098077**.

A 20% lighter version of the original color is **4284106037**, and **4278190080** is the 20% darker color. If you saturate the color by 10%, you get **4281014277**, and if you desaturate by 10%, it is **4281015309**.

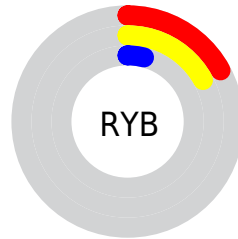
Distribution



Red (17%)

Green (10%)

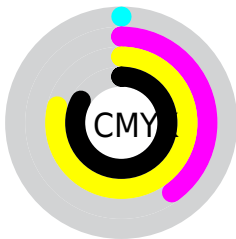
Blue (4%)



Red (17%)

Yellow (17%)

Blue (4%)

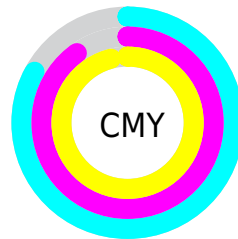


Cyan (0%)

Magenta (40%)

Yellow (79%)

Black (83%)



Cyan (83%)

Magenta (90%)

Yellow (96%)

Brightness & Saturation Gradients

These gradients show how the Android color 4281014793 changes by changing the brightness by 10 percent. The first figure shows a shift by +10% for each color and the second figure -10%.

Similar to the brightness gradients but the following saturation gradients show a change of the Android color 4281014793 by changing the saturation by 10% instead.



4281014793



4281014793



4294966761



4279500800



4284106037



4278190080



4285750604



4287460708



4289171325



4291013015



4292855218



4294762957



4281014793



4281014793

■ 4281014277

■ 4281015309

■ 4281013760

■ 4281015826

■ 4281013504

■ 4281016342

■ 4281017114

■ 4281017630

■ 4281018147

■ 4281018663

■ 4281019179

■ 4281019696

Harmonies

Analogous

The Analogous color harmony consists of three colors that are next to each other on the color wheel.



4281341715



4281014793



4280491269

Triad

The Triadic color harmony groups three colors that are evenly spaced from another and form a triangle on the color wheel.



4281014793



4278199071



4280294190

Complementary

The Complementary color scheme is a pair of colors which are on the opposite of each other on the color wheel.



4281014793



4278786603

Split Complementary

Split-complementary colors differ from the complementary color scheme. The scheme consists of three colors, the original color and two neighbors of the complement color.



4279246385



4281014793



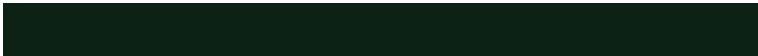
4278198824

Square

The Square scheme is like the rectangle color scheme, but the four colors are evenly spaced on the color wheel.



4281014793



4278919701



4278198575



4281014054

Rectangle

The Rectangle color scheme consists of four colors that form a rectangle on the color wheel.



4281014793



4280033032



4278198575



4280032304

Sweetspot

The Sweet Spot groups the original color and five complimentary colors.



4281014793



4281872683



4281010458



4280031252



4288453788



4280032284

Same Dimension

The Same Dimension uses a secret algorithm to generate beautiful new colors.



4281014793



4281867523



4281018889



4279505682



4283705856



4292110848

Inverse Universe

The Inverse Universe completely reimagines the original color for something new.



4278786603



4278394168



4278782251



4279374612



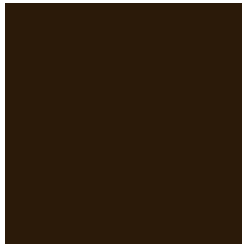
4278200916



4278217428

Previews

White Background



This preview shows how the Android color 4281014793 looks on a white background.

Color Contrast Check

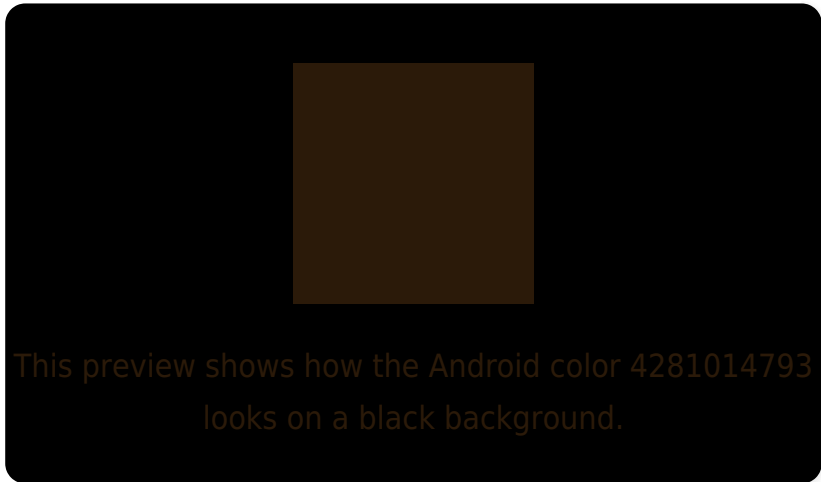
Large Text (above 18pt) WCAG AA ✓ Pass

Any Text WCAG AA ✓ Pass

Large Text (above 18pt) WCAG AAA ✓ Pass

Any Text WCAG AAA ✓ Pass

Black Background



Color Contrast Check

Large Text (above 18pt) WCAG AA × Fail

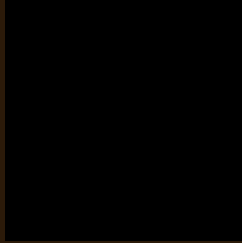
Any Text WCAG AA × Fail

Large Text (above 18pt) WCAG AAA × Fail

Any Text WCAG AAA × Fail

If you want to check with other color combinations, try the [Color Contrast Checker](#).

Android 4281014793 Background



This preview shows how black text looks on a background with the Android color 4281014793.

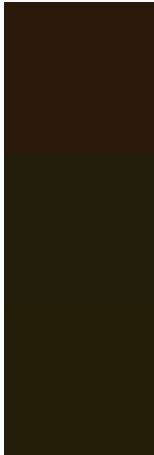


This preview shows how white text looks on a background with the Android color 4281014793.

Color Blindness Simulation

Color vision deficiency is a very complex topic, and I could not describe the different causes any better than Wikipedia does, so if you want to learn more, you should check out their [article about color blindness](#).

Dichromacy

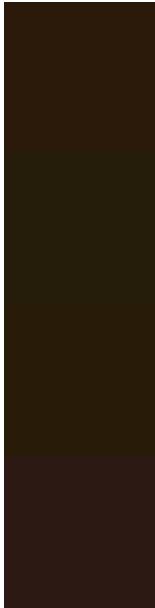


Original Color
4281014793

Protanopia
4280425994

Deuteranopia
4280687880

Trichromacy



Original Color

4281014793

Protanomaly

4280622346

Deuteranomaly

4280818696

Tritanomaly

4281080084

Monochromacy



Original Color

4281014793

Achromatopsia

4280098077

Achromatomaly

4280425494

CSS Examples

Text

The CSS property to change the color of the text to Android 4281014793 is called "color". The color property can be set on classes, ids or directly on the HTML element.

This example shows how text in the color `rgb(43, 26, 9)` looks like.

```
.text, #text, p{  
    color:rgb(43, 26, 9)  
}
```

If you want to add a text shadow in that color use the text-shadow property, you can generate a text shadow directly with our [CSS Text Shadow Generator](#).

Here you see how black text with a 4 pixel rgb(43, 26, 9) colored shadow looks like.

```
.shadow{ text-shadow: 4px 4px 2px rgb(43, 26, 9) }
```

Border

The CSS property to change the border of an element to Android 4281014793 is called "border". The border property can be set on classes, ids or directly on the HTML element.

This example shows the color as border, it can be applied via the CSS property "border" or "border-color".

```
.border, #border, table{ border:4px solid rgb(43, 26, 9) }
```

If only the border color should be changed use the property `border-color`.

```
.border{ border-color:rgb(43, 26, 9) }
```

If you want to add a box shadow in that color use:

Here you see how a box with a 4 pixel `rgb(43, 26, 9)` colored shadow looks like.

```
.boxshadow{ -moz-box-shadow:4px 4px 4px  
4px rgb(43, 26, 9); -webkit-box-shadow:4px  
4px 4px 4px rgb(43, 26, 9); box-shadow:4px  
4px 4px 4px rgb(43, 26, 9) }
```

Background

The CSS property to change the background color of an element to Android 4281014793 is called "background". The background property can be set on classes, ids or directly on the HTML element.

```
.background, #background, body{  
background: rgb(43, 26, 9) }
```

If only the background color should be changed can be used:

```
.background{ background-color: rgb(43, 26,  
9) }
```

This example shows the color as background, it is applied via the CSS property "background".

To optimize and compress your CSS code, you can use our [online CSS compressor and optimizer](#) based on csstidy. If you want to create a linear or radial gradient as background or border, check our [CSS Gradient Generator](#).

Hey! You found this booklet interesting? Support Converting Colors with the new Membership Option!

The pro membership hides all ads, plus gives you double the colors in the color bucket, and more awesome pro features!

[Learn more, Memberships starting at \\$2.50/m!](#)

**Follow me
on Twitter!**

@ConvertingColor