

Converting Colors

Android(4281079832)

Have a look what the booklet for
Android(4281079832) contains.

Android(4281079832)	3
<i>Conversions</i>	4
<i>Details</i>	6
<i>Harmonies</i>	11
<i>Previews</i>	23
<i>Color Blindness Simulation</i>	26
<i>CSS Examples</i>	29

Color

Android(4281079832)

Conversions

Conversions Part 1

Format	Color
Hex	2C1818
RGB	44, 24, 24
RGB Percent	17%, 9%, 9%
CMY	0.8275, 0.9059, 0.9059
CMYK	0.00, 0.45, 0.45, 0.83
HSL	0°, 29%, 13%
HSV	0°, 45%, 17%
XYZ	1.5302, 1.2547, 1.0257
YIQ	29.9800, 11.9200, 4.2400

Conversions

Conversions Part 2

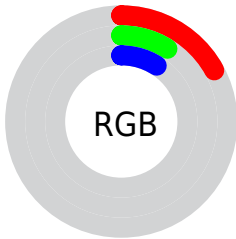
Format	Color
R_YB	44, 24, 24
Decimal	2889752
CIE Lab	10.95, 10.07, 4.23
CIE LCh	11, 10.922, 22.812
Yxy	1.2547, 0.4016, 0.3293
Android (android.graphics.Color)	4281079832 (0xFF2C1818)
YUV	29.9800, -2.9481, 12.2955
Hunter-Lab	11.2013, 4.7827, 2.4118

Details

The Android color **4281079832** is a dark color, and the websafe version is hex **333333**. A complement of this color would be **4279774252**, and the grayscale version is **4280163870**.

A 20% lighter version of the original color is **4284171075**, and **4278190080** is the 20% darker color. If you saturate the color by 10%, you get **4281078804**, and if you desaturate by 10%, it is **4281080860**.

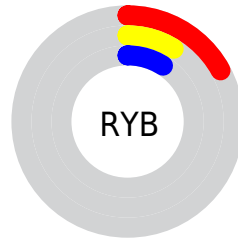
Distribution



Red (17%)

Green (9%)

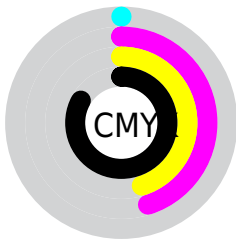
Blue (9%)



Red (17%)

Yellow (9%)

Blue (9%)

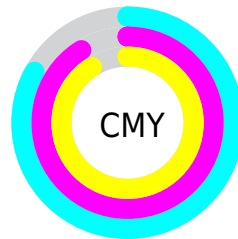


Cyan (0%)

Magenta (45%)

Yellow (45%)

Black (83%)



Cyan (83%)

Magenta (91%)

Yellow (91%)

Brightness & Saturation Gradients

These gradients show how the Android color 4281079832 changes by changing the brightness by 10 percent. The first figure shows a shift by +10% for each color and the second figure -10%.

Similar to the brightness gradients but the following saturation gradients show a change of the Android color 4281079832 by changing the saturation by 10% instead.



4281079832



4281079832



4294966266



4279828480



4284171075



4278190080



4285815642



4287460211



4289236364



4291012518



4292854465



4294762205



4281079832



4281079832

■ 4281078804

■ 4281080860

■ 4281077519

■ 4281082145

■ 4281076491

■ 4281083173

■ 4281075206

■ 4281084458

■ 4281074178

■ 4281085486

■ 4281073664

■ 4281086514

■ 4281087799

■ 4281088827

■ 4281090112

Harmonies

Analogous

The Analogous color harmony consists of three colors that are next to each other on the color wheel.



4281014303



4281079832



4280949265

Triad

The Triadic color harmony groups three colors that are evenly spaced from another and form a triangle on the color wheel.



4281079832



4279509012



4279246636

Complementary

The Complementary color scheme is a pair of colors which are on the opposite of each other on the color wheel.



4281079832



4279774252

Split Complementary

Split-complementary colors differ from the complementary color scheme. The scheme consists of three colors, the original color and two neighbors of the complement color.



4278591529



4281079832



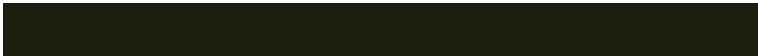
4278919451

Square

The Square scheme is like the rectangle color scheme, but the four colors are evenly spaced on the color wheel.



4281079832



4280098574



4278460707



4280032299

Rectangle

The Rectangle color scheme consists of four colors that form a rectangle on the color wheel.



4281079832



4280687374



4278460707



4278984491

Sweetspot

The Sweet Spot groups the original color and five complimentary colors.



4281079832



4281872432



4281079852



4280030999



4288453788



4280032284

Same Dimension

The Same Dimension uses a secret algorithm to generate beautiful new colors.



4281079832



4281866521



4281082392



4279702805



4283891712



4292214784

Inverse Universe

The Inverse Universe completely reimagines the original color for something new.



4279774252



4279842872



4279771692



4279572247



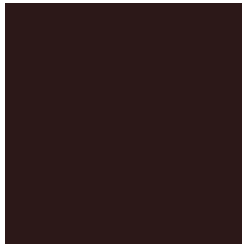
4278212439



4278245078

Previews

White Background



This preview shows how the Android color 4281079832 looks on a white background.

Color Contrast Check

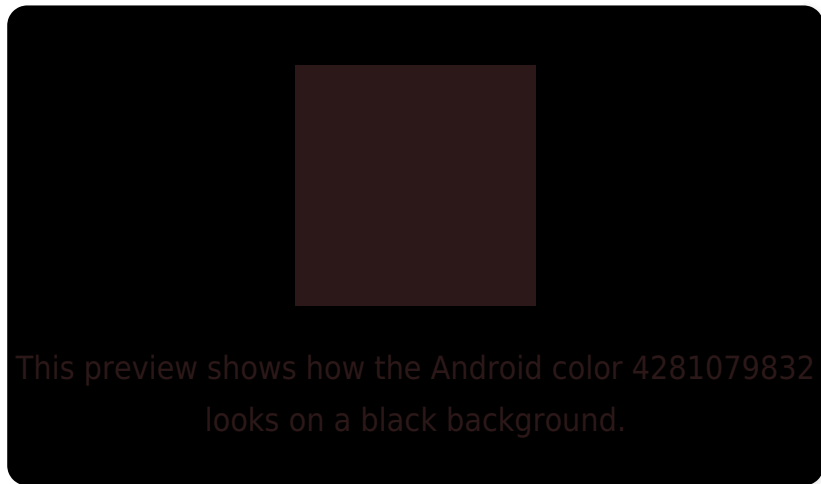
Large Text (above 18pt) WCAG AA ✓ Pass

Any Text WCAG AA ✓ Pass

Large Text (above 18pt) WCAG AAA ✓ Pass

Any Text WCAG AAA ✓ Pass

Black Background



Color Contrast Check

Large Text (above 18pt) WCAG AA × Fail

Any Text WCAG AA × Fail

Large Text (above 18pt) WCAG AAA × Fail

Any Text WCAG AAA × Fail

If you want to check with other color combinations, try the [Color Contrast Checker](#).

Android 4281079832 Background



This preview shows how black text looks on a background with the Android color 4281079832.

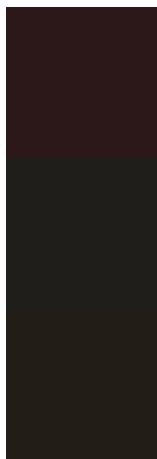


This preview shows how white text looks on a background with the Android color 4281079832.

Color Blindness Simulation

Color vision deficiency is a very complex topic, and I could not describe the different causes any better than Wikipedia does, so if you want to learn more, you should check out their [article about color blindness](#).

Dichromacy

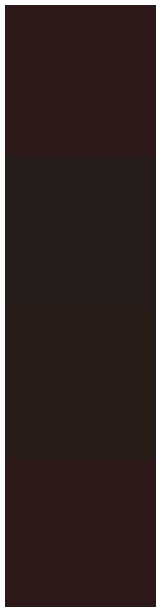


Original Color
4281079832

Protanopia
4280229403

Deuteranopia
4280491287

Trichromacy



Original Color

4281079832

Protanomaly

4280556570

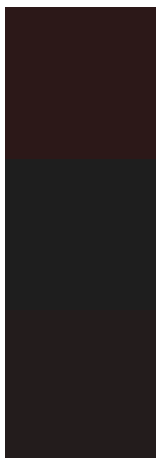
Deuteranomaly

4280687383

Tritanomaly

4281079833

Monochromacy



Original Color

4281079832

Achromatopsia

4280163870

Achromatomaly

4280491036

CSS Examples

Text

The CSS property to change the color of the text to Android 4281079832 is called "color". The color property can be set on classes, ids or directly on the HTML element.

This example shows how text in the color `rgb(44, 24, 24)` looks like.

```
.text, #text, p{  
    color:rgb(44, 24, 24)  
}
```

If you want to add a text shadow in that color use the text-shadow property, you can generate a text shadow directly with our [CSS Text Shadow Generator](#).

Here you see how black text with a 4 pixel rgb(44, 24, 24) colored shadow looks like.

```
.shadow{ text-shadow: 4px 4px 2px rgb(44, 24, 24) }
```

Border

The CSS property to change the border of an element to Android 4281079832 is called "border". The border property can be set on classes, ids or directly on the HTML element.

This example shows the color as border, it can be applied via the CSS property "border" or "border-color".

```
.border, #border, table{ border:4px solid rgb(44, 24, 24) }
```

If only the border color should be changed use the property `border-color`.

```
.border{ border-color:rgb(44, 24, 24) }
```

If you want to add a box shadow in that color use:

Here you see how a box with a 4 pixel `rgb(44, 24, 24)` colored shadow looks like.

```
.boxshadow{ -moz-box-shadow:4px 4px 4px  
4px rgb(44, 24, 24); -webkit-box-  
shadow:4px 4px 4px 4px rgb(44, 24, 24);  
box-shadow:4px 4px 4px 4px rgb(44, 24, 24)  
}
```

Background

The CSS property to change the background color of an element to Android 4281079832 is called "background". The background property can be set on classes, ids or directly on the HTML element.

```
.background, #background, body{  
background: rgb(44, 24, 24) }
```

If only the background color should be changed can be used:

```
.background{ background-color: rgb(44, 24,  
24) }
```

This example shows the color as background, it is applied via the CSS property "background".

To optimize and compress your CSS code, you can use our [online CSS compressor and optimizer](#) based on csstidy. If you want to create a linear or radial gradient as background or border, check our [CSS Gradient Generator](#).

Hey! You found this booklet interesting? Support Converting Colors with the new Membership Option!

The pro membership hides all ads, plus gives you double the colors in the color bucket, and more awesome pro features!

[Learn more, Memberships starting at \\$2.50/m!](#)

**Follow me
on Twitter!**

@ConvertingColor