

Converting Colors

Android(4281080844)

Have a look what the booklet for
Android(4281080844) contains.

Android(4281080844)	3
<i>Conversions</i>	4
<i>Details</i>	6
<i>Harmonies</i>	11
<i>Previews</i>	23
<i>Color Blindness Simulation</i>	26
<i>CSS Examples</i>	29

Color

Android(4281080844)

Conversions

Conversions Part 1

Format	Color
Hex	2C1C0C
RGB	44, 28, 12
RGB Percent	17%, 11%, 5%
CMY	0.8275, 0.8902, 0.9529
CMYK	0.00, 0.36, 0.73, 0.83
HSL	30°, 57%, 11%
HSV	30°, 73%, 17%
XYZ	1.5203, 1.3925, 0.5365
YIQ	30.9600, 14.6720, -1.5840

Conversions

Conversions Part 2

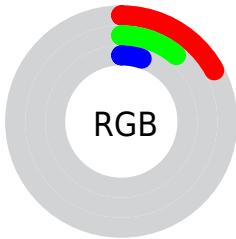
Format	Color
RYB	44, 44, 12
Decimal	2890764
CIELab	11.91, 5.69, 12.86
CIElCh	12, 14.059, 66.136
Yxy	1.3925, 0.4408, 0.4037
Android (android.graphics.Color)	4281080844 (0xFF2C1C0C)
YUV	30.9600, -9.3473, 11.4361
Hunter-Lab	11.8005, 2.3461, 5.5649

Details

The Android color **4281080844** is a dark color, and the websafe version is hex **333333**. A complement of this color would be **4278983724**, and the grayscale version is **4280229663**.

A 20% lighter version of the original color is **4284172087**, and **4278190080** is the 20% darker color. If you saturate the color by 10%, you get **4281080328**, and if you desaturate by 10%, it is **4281081360**.

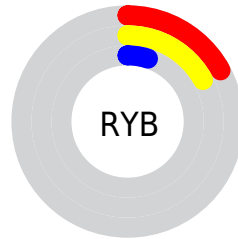
Distribution



Red (17%)

Green (11%)

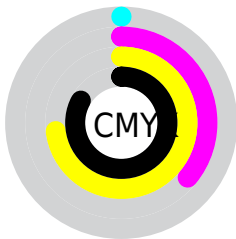
Blue (5%)



Red (17%)

Yellow (17%)

Blue (5%)

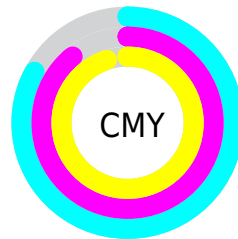


Cyan (0%)

Magenta (36%)

Yellow (73%)

Black (83%)



Cyan (83%)

Magenta (89%)

Yellow (95%)

Brightness & Saturation Gradients

These gradients show how the Android color 4281080844 changes by changing the brightness by 10 percent. The first figure shows a shift by +10% for each color and the second figure -10%.

Similar to the brightness gradients but the following saturation gradients show a change of the Android color 4281080844 by changing the saturation by 10% instead.



4281080844



4281080844



4294967276



4279566848



4284172087



4278190080



4285816654



4287527014



4289237375



4291079321



4292921268



4294829007



4281080844



4281080844

■ 4281080328

■ 4281081360

■ 4281079811

■ 4281081877

■ 4281079296

■ 4281082649

■ 4281083166

■ 4281083682

■ 4281084198

■ 4281084715

■ 4281085487

■ 4281086004

Harmonies

Analogous

The Analogous color harmony consists of three colors that are next to each other on the color wheel.



4281407764



4281080844



4280557321

Triad

The Triadic color harmony groups three colors that are evenly spaced from another and form a triangle on the color wheel.



4281080844



4278199329



4280491055

Complementary

The Complementary color scheme is a pair of colors which are on the opposite of each other on the color wheel.



4281080844



4278983724

Split Complementary

Split-complementary colors differ from the complementary color scheme. The scheme consists of three colors, the original color and two neighbors of the complement color.



4279509042



4281080844



4278199338

Square

The Square scheme is like the rectangle color scheme, but the four colors are evenly spaced on the color wheel.



4281080844



4279051287



4278264369



4281145639

Rectangle

The Rectangle color scheme consists of four colors that form a rectangle on the color wheel.



4281080844



4280099084



4278264369



4280163633

Sweetspot

The Sweet Spot groups the original color and five complimentary colors.



4281080844



4281872940



4281076764



4280031253



4288453788



4280032284

Same Dimension

The Same Dimension uses a secret algorithm to generate beautiful new colors.



4281080844



4281868295



4281084940



4279703061



4283902720



4292242176

Inverse Universe

The Inverse Universe completely reimagines the original color for something new.



4278983724



4278657080



4278979628



4279571991



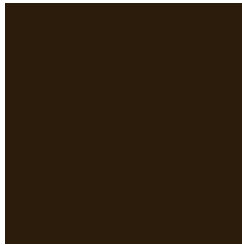
4278201175



4278217686

Previews

White Background



This preview shows how the Android color 4281080844 looks on a white background.

Color Contrast Check

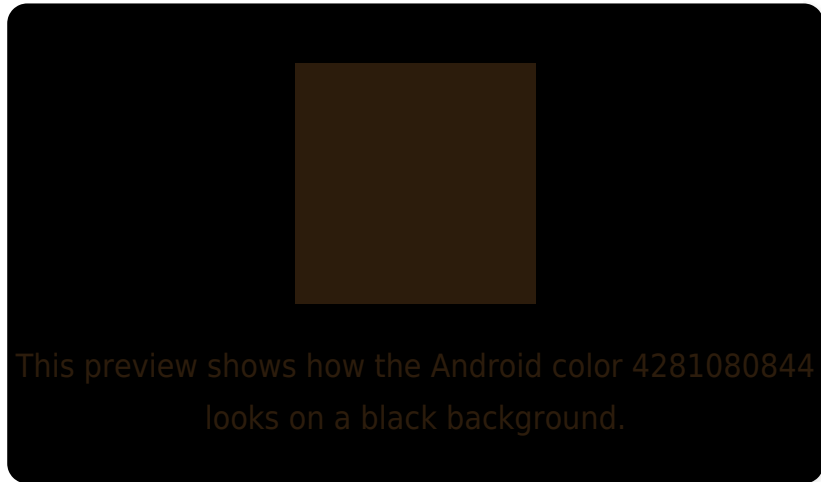
Large Text (above 18pt) WCAG AA ✓ Pass

Any Text WCAG AA ✓ Pass

Large Text (above 18pt) WCAG AAA ✓ Pass

Any Text WCAG AAA ✓ Pass

Black Background



Color Contrast Check

Large Text (above 18pt) WCAG AA × Fail

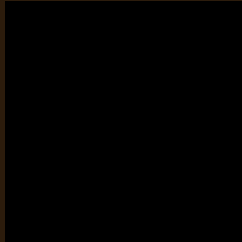
Any Text WCAG AA × Fail

Large Text (above 18pt) WCAG AAA × Fail

Any Text WCAG AAA × Fail

If you want to check with other color combinations, try the [Color Contrast Checker](#).

Android 4281080844 Background



This preview shows how black text looks on a background with the Android color 4281080844.

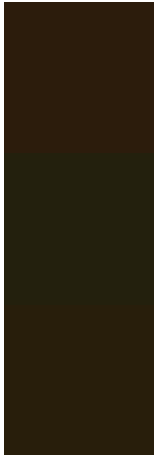


This preview shows how white text looks on a background with the Android color 4281080844.

Color Blindness Simulation

Color vision deficiency is a very complex topic, and I could not describe the different causes any better than Wikipedia does, so if you want to learn more, you should check out their [article about color blindness](#).

Dichromacy

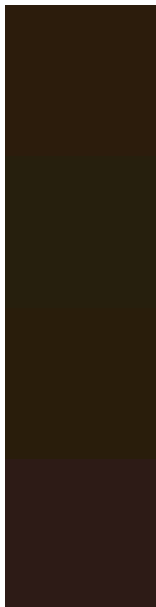


Original Color
4281080844

Protanopia
4280492045

Deuteranopia
4280819211

Trichromacy



Original Color

4281080844

Protanomaly

4280688397

Deuteranomaly

4280884491

Tritanomaly

4281146134

Monochromacy



Original Color

4281080844

Achromatopsia

4280229663

Achromatomaly

4280557080

CSS Examples

Text

The CSS property to change the color of the text to Android 4281080844 is called "color". The color property can be set on classes, ids or directly on the HTML element.

This example shows how text in the color `rgb(44, 28, 12)` looks like.

```
.text, #text, p{  
    color:rgb(44, 28, 12)  
}
```

If you want to add a text shadow in that color use the text-shadow property, you can generate a text shadow directly with our [CSS Text Shadow Generator](#).

Here you see how black text with a 4 pixel rgb(44, 28, 12) colored shadow looks like.

```
.shadow{ text-shadow: 4px 4px 2px rgb(44, 28, 12) }
```

Border

The CSS property to change the border of an element to Android 4281080844 is called "border". The border property can be set on classes, ids or directly on the HTML element.

This example shows the color as border, it can be applied via the CSS property "border" or "border-color".

```
.border, #border, table{ border:4px solid rgb(44, 28, 12) }
```

If only the border color should be changed use the property border-color.

```
.border{ border-color:rgb(44, 28, 12) }
```

If you want to add a box shadow in that color use:

Here you see how a box with a 4 pixel rgb(44, 28, 12) colored shadow looks like.

```
.boxshadow{ -moz-box-shadow:4px 4px 4px  
4px rgb(44, 28, 12); -webkit-box-  
shadow:4px 4px 4px 4px rgb(44, 28, 12);  
box-shadow:4px 4px 4px 4px rgb(44, 28, 12)  
}
```

Background

The CSS property to change the background color of an element to Android 4281080844 is called "background". The background property can be set on classes, ids or directly on the HTML element.

```
.background, #background, body{  
background: rgb(44, 28, 12) }
```

If only the background color should be changed can be used:

```
.background{ background-color: rgb(44, 28,  
12) }
```

This example shows the color as background, it is applied via the CSS property "background".

To optimize and compress your CSS code, you can use our [online CSS compressor and optimizer](#) based on csstidy. If you want to create a linear or radial gradient as background or border, check our [CSS Gradient Generator](#).

Hey! You found this booklet interesting? Support Converting Colors with the new Membership Option!

The pro membership hides all ads, plus gives you double the colors in the color bucket, and more awesome pro features!

[Learn more, Memberships starting at \\$2.50/m!](#)

**Follow me
on Twitter!**

@ConvertingColor