

Converting Colors

Android(4281142804)

Have a look what the booklet for
Android(4281142804) contains.

Android(4281142804)	3
<i>Conversions</i>	4
<i>Details</i>	6
<i>Harmonies</i>	11
<i>Previews</i>	23
<i>Color Blindness Simulation</i>	26
<i>CSS Examples</i>	29

Color

Android(4281142804)

Conversions

Conversions Part 1

Format	Color
Hex	2D0E14
RGB	45, 14, 20
RGB Percent	18%, 5%, 8%
CMY	0.8235, 0.9451, 0.9216
CMYK	0.00, 0.69, 0.56, 0.82
HSL	348°, 53%, 12%
HSV	348°, 69%, 18%
XYZ	1.3655, 0.9225, 0.7679
YIQ	23.9530, 16.5500, 8.4380

Conversions

Conversions Part 2

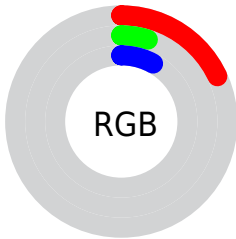
Format	Color
RYB	45, 14, 20
Decimal	2952724
CIELab	8.33, 16.69, 3.38
CIELCh	8, 17.025, 11.435
Yxy	0.9225, 0.4468, 0.3019
Android (android.graphics.Color)	4281142804 (0xFF2D0E14)
YUV	23.9530, -1.9488, 18.4582
Hunter-Lab	9.6045, 8.5697, 1.9828

Details

The Android color **4281142804** is a dark color, and the websafe version is hex **330000**. A complement of this color would be **4279119143**, and the grayscale version is **4279769112**.

A 20% lighter version of the original color is **4284299582**, and **4278190080** is the 20% darker color. If you saturate the color by 10%, you get **4281141776**, and if you desaturate by 10%, it is **4281144088**.

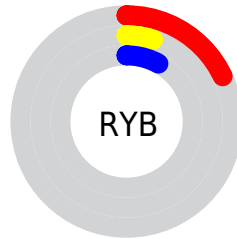
Distribution



 Red (18%)

 Green (5%)

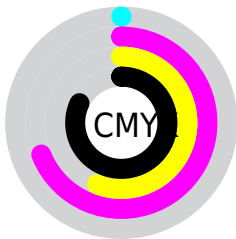
 Blue (8%)



 Red (18%)

 Yellow (5%)

 Blue (8%)

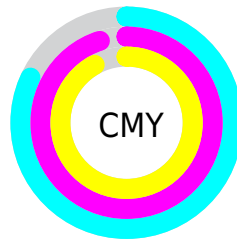



 Cyan (0%)

 Magenta (69%)

 Yellow (56%)

 Black (82%)



 Cyan (82%)


 Magenta (95%)

 Yellow (92%)

Brightness & Saturation Gradients

These gradients show how the Android color 4281142804 changes by changing the brightness by 10 percent. The first figure shows a shift by +10% for each color and the second figure -10%.

Similar to the brightness gradients but the following saturation gradients show a change of the Android color 4281142804 by changing the saturation by 10% instead.

 4281142804

 4281142804

 4294963188

 4279566336

 4284299582

 4278190080

 4285943893


 4287653998


 4289430151

 4291271841

 4293113788

 4294955992

 4281142804

 4281142804

■ 4281141776

■ 4281144088

■ 4281140493

■ 4281145115

■ 4281139465

■ 4281146399

■ 4281139209

■ 4281147427

■ 4281148710

■ 4281149738

■ 4281151021

■ 4281152049

■ 4281153333

Harmonies

Analogous

The Analogous color harmony consists of three colors that are next to each other on the color wheel.



4280880928



4281142804



4281078020

Triad

The Triadic color harmony groups three colors that are evenly spaced from another and form a triangle on the color wheel.



4281142804



4279180288



4278197037

Complementary

The Complementary color scheme is a pair of colors which are on the opposite of each other on the color wheel.



4281142804



4279119143

Split Complementary

Split-complementary colors differ from the complementary color scheme. The scheme consists of three colors, the original color and two neighbors of the complement color.



4278197799



4281142804



4278197776

Square

The Square scheme is like the rectangle color scheme, but the four colors are evenly spaced on the color wheel.



4281142804



4280031488



4278197788



4278917166

Rectangle

The Rectangle color scheme consists of four colors that form a rectangle on the color wheel.



4281142804



4280816384



4278197788



4278197292

Sweetspot

The Sweet Spot groups the original color and five complimentary colors.



4281142804



4282068529



4280749613



4280227608



4288585374



4280229663

Same Dimension

The Same Dimension uses a secret algorithm to generate beautiful new colors.



4281142804



4282059283



4281145102



4279702805



4283891729



4292214825

Inverse Universe

The Inverse Universe completely reimagines the original color for something new.



4281142804



4282059283



4279116845



4279702805



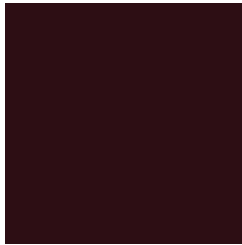
4283891729



4292214825

Previews

White Background



This preview shows how the Android color 4281142804 looks on a white background.

Color Contrast Check

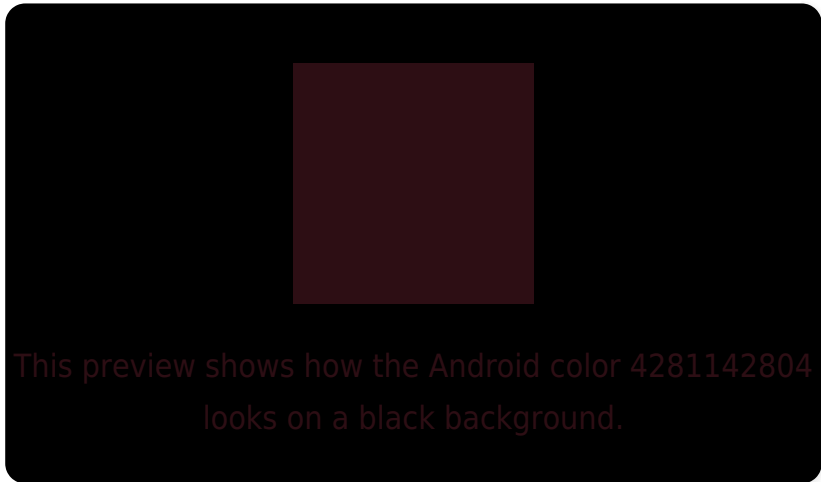
Large Text (above 18pt) WCAG AA ✓ Pass

Any Text WCAG AA ✓ Pass

Large Text (above 18pt) WCAG AAA ✓ Pass

Any Text WCAG AAA ✓ Pass

Black Background



Color Contrast Check

Large Text (above 18pt) WCAG AA × Fail

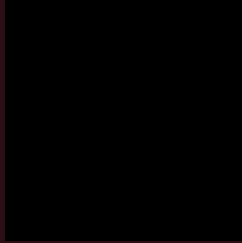
Any Text WCAG AA × Fail

Large Text (above 18pt) WCAG AAA × Fail

Any Text WCAG AAA × Fail

If you want to check with other color combinations, try the [Color Contrast Checker](#).

Android 4281142804 Background



This preview shows how black text looks on a background with the Android color 4281142804.

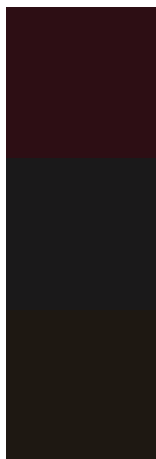


This preview shows how white text looks on a background with the Android color 4281142804.

Color Blindness Simulation

Color vision deficiency is a very complex topic, and I could not describe the different causes any better than Wikipedia does, so if you want to learn more, you should check out their [article about color blindness](#).

Dichromacy

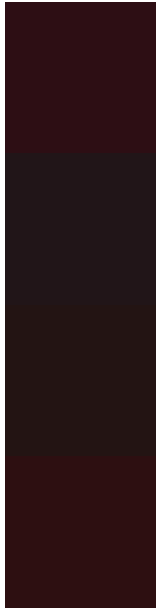


Original Color
4281142804

Protanopia
4279900442

Deuteranopia
4280162322

Trichromacy



Original Color

4281142804

Protanomaly

4280358168

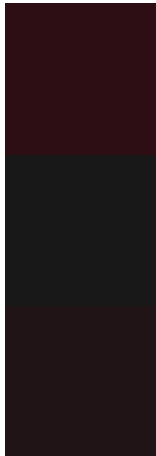
Deuteranomaly

4280488979

Tritanomaly

4281143057

Monochromacy



Original Color

4281142804

Achromatopsia

4279769112

Achromatomaly

4280292375

CSS Examples

Text

The CSS property to change the color of the text to Android 4281142804 is called "color". The color property can be set on classes, ids or directly on the HTML element.

This example shows how text in the color `rgb(45, 14, 20)` looks like.

```
.text, #text, p{  
    color:rgb(45, 14, 20)  
}
```

If you want to add a text shadow in that color use the text-shadow property, you can generate a text shadow directly with our [CSS Text Shadow Generator](#).

Here you see how black text with a 4 pixel rgb(45, 14, 20) colored shadow looks like.

```
.shadow{ text-shadow: 4px 4px 2px rgb(45, 14, 20) }
```

Border

The CSS property to change the border of an element to Android 4281142804 is called "border". The border property can be set on classes, ids or directly on the HTML element.

This example shows the color as border, it can be applied via the CSS property "border" or "border-color".

```
.border, #border, table{ border:4px solid rgb(45, 14, 20) }
```

If only the border color should be changed use the property `border-color`.

```
.border{ border-color:rgb(45, 14, 20) }
```

If you want to add a box shadow in that color use:

Here you see how a box with a 4 pixel `rgb(45, 14, 20)` colored shadow looks like.

```
.boxshadow{ -moz-box-shadow:4px 4px 4px  
4px rgb(45, 14, 20); -webkit-box-  
shadow:4px 4px 4px 4px rgb(45, 14, 20);  
box-shadow:4px 4px 4px 4px rgb(45, 14, 20)  
}
```

Background

The CSS property to change the background color of an element to Android 4281142804 is called "background". The background property can be set on classes, ids or directly on the HTML element.

```
.background, #background, body{  
background: rgb(45, 14, 20) }
```

If only the background color should be changed can be used:

```
.background{ background-color: rgb(45, 14,  
20) }
```

This example shows the color as background, it is applied via the CSS property "background".

To optimize and compress your CSS code, you can use our [online CSS compressor and optimizer](#) based on csstidy. If you want to create a linear or radial gradient as background or border, check our [CSS Gradient Generator](#).

Hey! You found this booklet interesting? Support Converting Colors with the new Membership Option!

The pro membership hides all ads, plus gives you double the colors in the color bucket, and more awesome pro features!

[Learn more, Memberships starting at \\$2.50/m!](#)

**Follow me
on Twitter!**

@ConvertingColor