

# Converting Colors

Android(4281209363)

Have a look what the booklet for  
Android(4281209363) contains.

<b>Android(4281209363)</b> .....	3
<i><b>Conversions</b></i> .....	4
<i><b>Details</b></i> .....	6
<i><b>Harmonies</b></i> .....	11
<i><b>Previews</b></i> .....	23
<i><b>Color Blindness Simulation</b></i> .....	26
<i><b>CSS Examples</b></i> .....	29

# Color

**Android(4281209363)**

# Conversions

## Conversions Part 1

Format	Color
Hex	2E1213
RGB	46, 18, 19
RGB Percent	18%, 7%, 7%
CMY	0.8196, 0.9294, 0.9255
CMYK	0.00, 0.61, 0.59, 0.82
HSL	358°, 44%, 13%
HSV	358°, 61%, 18%
XYZ	1.4606, 1.0605, 0.7438
YIQ	26.4860, 16.3670, 6.2470

# Conversions

## Conversions Part 2

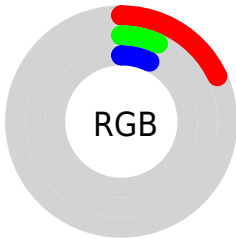
<b>Format</b>	<b>Color</b>
<a href="#">RYB</a>	<a href="#">46, 18, 19</a>
Decimal	<a href="#">3019283</a>
CIELab	<a href="#">9.49, 14.46, 5.72</a>
CIElCh	<a href="#">9, 15.545, 21.570</a>
Yxy	<a href="#">1.0605, 0.4474, 0.3248</a>
Android (android.graphics.Color)	<a href="#">4281209363 (0xFF2E1213)</a>
YUV	<a href="#">26.4860, -3.6906, 17.1138</a>
Hunter-Lab	<a href="#">10.2979, 7.2954, 2.9261</a>

# Details

The Android color **4281209363** is a dark color, and the websafe version is hex **330000**. A complement of this color would be **4279381549**, and the grayscale version is **4279966491**.

A 20% lighter version of the original color is **4284366141**, and **4278190080** is the 20% darker color. If you saturate the color by 10%, you get **4281208079**, and if you desaturate by 10%, it is **4281210647**.

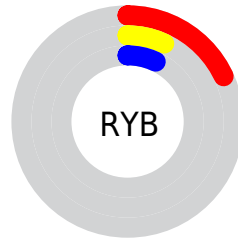
# Distribution



Red (18%)

Green (7%)

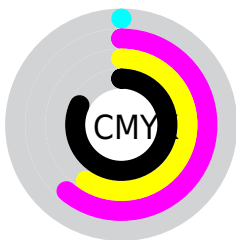
Blue (7%)



Red (18%)

Yellow (7%)

Blue (7%)

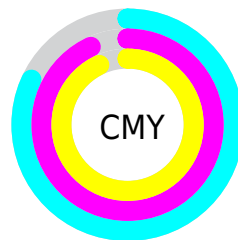


Cyan (0%)

Magenta (61%)

Yellow (59%)

Black (82%)



Cyan (82%)

Magenta (93%)

Yellow (93%)

# Brightness & Saturation Gradients

These gradients show how the Android color 4281209363 changes by changing the brightness by 10 percent. The first figure shows a shift by +10% for each color and the second figure -10%.

Similar to the brightness gradients but the following saturation gradients show a change of the Android color 4281209363 by changing the saturation by 10% instead.





4281209363



4281209363



4294964467



4279828481



4284366141



4278190080



4286010452



4287720813



4289496710



4291338400



4293180347



4294957015



4281209363



4281209363

■ 4281208079

■ 4281210647

■ 4281207050

■ 4281211676

■ 4281205766

■ 4281212960

■ 4281204738

■ 4281213989

■ 4281215273

■ 4281216558

■ 4281217586

■ 4281218870

■ 4281219899

# Harmonies

## Analogous

The Analogous color harmony consists of three colors that are next to each other on the color wheel.



4281078302



4281209363



4281013509

# Triad

The Triadic color harmony groups three colors that are evenly spaced from another and form a triangle on the color wheel.



4281209363



4279049738



4278262831

# Complementary

The Complementary color scheme is a pair of colors which are on the opposite of each other on the color wheel.



4281209363



4279381549

# Split Complementary

Split-complementary colors differ from the complementary color scheme. The scheme consists of three colors, the original color and two neighbors of the complement color.



4278198059



4281209363



4278198295

# Square

The Square scheme is like the rectangle color scheme, but the four colors are evenly spaced on the color wheel.



4281209363



4279966720



4278198306



4279638318

# Rectangle

The Rectangle color scheme consists of four colors that form a rectangle on the color wheel.



4281209363



4280751872



4278198306



4278197550



# Sweetspot

The Sweet Spot groups the original color and five complimentary colors.



4281209363



4282069040



4281143854



4280227864



4288585374



4280229663



# Same Dimension

The Same Dimension uses a secret algorithm to generate beautiful new colors.



4281209363



4282060817



4281212690



4279702805



4283891715



4292214792



# Inverse Universe

The Inverse Universe completely reimagines the original color for something new.



4281209363



4282060817



4279378222



4279702805



4283891715

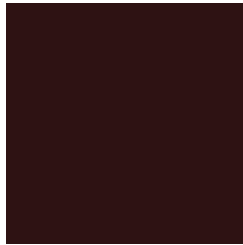


4292214792



# Previews

## White Background



This preview shows how the Android color 4281209363 looks on a white background.

## Color Contrast Check

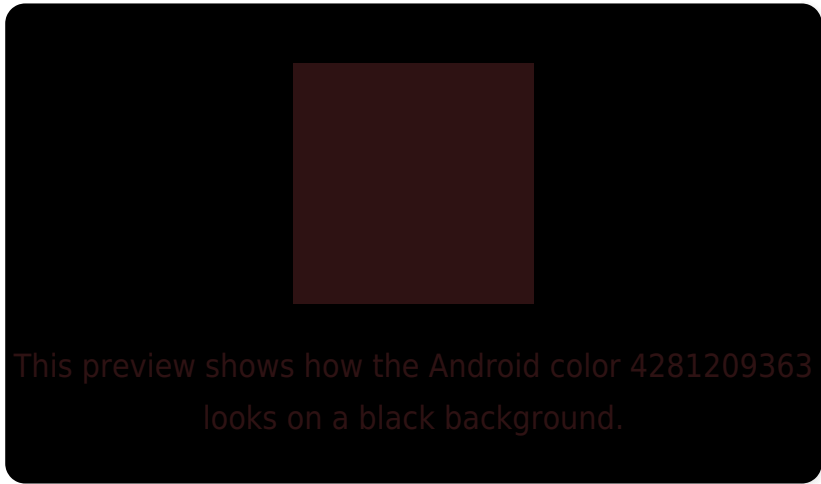
Large Text (above 18pt) WCAG AA ✓ Pass

Any Text WCAG AA ✓ Pass

Large Text (above 18pt) WCAG AAA ✓ Pass

Any Text WCAG AAA ✓ Pass

# Black Background



## Color Contrast Check

Large Text (above 18pt) WCAG AA × Fail

Any Text WCAG AA × Fail

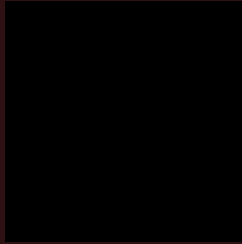
Large Text (above 18pt) WCAG AAA × Fail

Any Text WCAG AAA × Fail

If you want to check with other color combinations, try the [Color Contrast Checker](#).



## Android 4281209363 Background



This preview shows how black text looks on a background with the Android color 4281209363.



This preview shows how white text looks on a background with the Android color 4281209363.

# Color Blindness Simulation

Color vision deficiency is a very complex topic, and I could not describe the different causes any better than Wikipedia does, so if you want to learn more, you should check out their [article about color blindness](#).

## Dichromacy



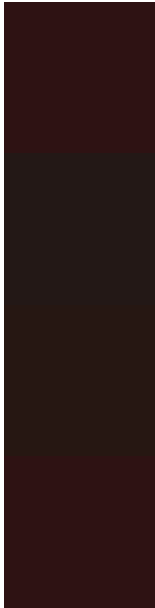
**Original Color**  
4281209363

**Protanopia**  
4280097559

**Deuteranopia**  
4280359442



# Trichromacy



**Original Color**

4281209363

**Protanomaly**

4280490006

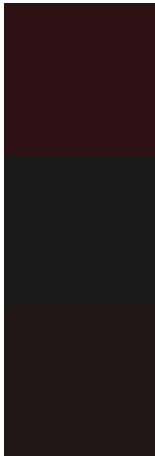
**Deuteranomaly**

4280686354

**Tritanomaly**

4281209363

# Monochromacy



**Original Color**

4281209363

**Achromatopsia**

4279900698

**Achromatomaly**

4280358679

# CSS Examples

## Text

The CSS property to change the color of the text to Android 4281209363 is called "color". The color property can be set on classes, ids or directly on the HTML element.

This example shows how text in the color `rgb(46, 18, 19)` looks like.

```
.text, #text, p{  
    color:rgb(46, 18, 19)  
}
```

If you want to add a text shadow in that color use the text-shadow property, you can generate a text shadow directly with our [CSS Text Shadow Generator](#).

Here you see how black text with a 4 pixel rgb(46, 18, 19) colored shadow looks like.

```
.shadow{ text-shadow: 4px 4px 2px rgb(46, 18, 19) }
```

## Border

The CSS property to change the border of an element to Android 4281209363 is called "border". The border property can be set on classes, ids or directly on the HTML element.

This example shows the color as border, it can be applied via the CSS property "border" or "border-color".

```
.border, #border, table{ border:4px solid rgb(46, 18, 19) }
```

If only the border color should be changed use the property border-color.

```
.border{ border-color:rgb(46, 18, 19) }
```

If you want to add a box shadow in that color use:

Here you see how a box with a 4 pixel rgb(46, 18, 19) colored shadow looks like.

```
.boxshadow{ -moz-box-shadow:4px 4px 4px  
4px rgb(46, 18, 19); -webkit-box-  
shadow:4px 4px 4px 4px rgb(46, 18, 19);  
box-shadow:4px 4px 4px 4px rgb(46, 18, 19)  
}
```

# Background

The CSS property to change the background color of an element to Android 4281209363 is called "background". The background property can be set on classes, ids or directly on the HTML element.

```
.background, #background, body{  
background: rgb(46, 18, 19) }
```

If only the background color should be changed can be used:

```
.background{ background-color: rgb(46, 18,  
19) }
```

This example shows the color as background, it is applied via the CSS property "background".

To optimize and compress your CSS code, you can use our [online CSS compressor and optimizer](#) based on csstidy. If you want to create a linear or radial gradient as background or border, check our [CSS Gradient Generator](#).



# Hey! You found this booklet interesting? Support Converting Colors with the new Membership Option!

The pro membership hides all ads, plus gives you double the colors in the color bucket, and more awesome pro features!

**[Learn more, Memberships starting at \\$2.50/m!](#)**

**Follow me  
on Twitter!**

@ConvertingColor