

Converting Colors

Android(4281338902)

Have a look what the booklet for
Android(4281338902) contains.

Android(4281338902)	3
<i>Conversions</i>	4
<i>Details</i>	6
<i>Harmonies</i>	11
<i>Previews</i>	23
<i>Color Blindness Simulation</i>	26
<i>CSS Examples</i>	29

Color

Android(4281338902)

Conversions

Conversions Part 1

Format	Color
Hex	300C16
RGB	48, 12, 22
RGB Percent	19%, 5%, 9%
CMY	0.8118, 0.9529, 0.9137
CMYK	0.00, 0.75, 0.54, 0.81
HSL	343°, 60%, 12%
HSV	343°, 75%, 19%
XYZ	1.4952, 0.9492, 0.8635
YIQ	23.9040, 18.2460, 10.7420

Conversions

Conversions Part 2

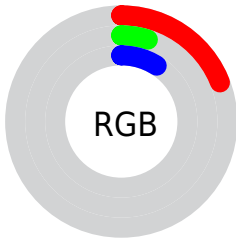
Format	Color
RYB	48, 12, 22
Decimal	3148822
CIELab	8.56, 19.42, 2.41
CIELCh	9, 19.564, 7.077
Yxy	0.9492, 0.4520, 0.2870
Android (android.graphics.Color)	4281338902 (0xFF300C16)
YUV	23.9040, -0.9387, 21.1322
Hunter-Lab	9.7429, 10.3436, 1.5655

Details

The Android color **4281338902** is a dark color, and the websafe version is hex **330000**. A complement of this color would be **4278988838**, and the grayscale version is **4279769112**.

A 20% lighter version of the original color is **4284495936**, and **4278190080** is the 20% darker color. If you saturate the color by 10%, you get **4281337619**, and if you desaturate by 10%, it is **4281340185**.

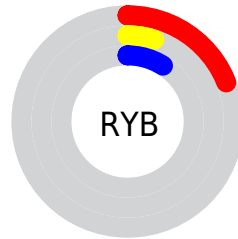
Distribution



 Red (19%)

 Green (5%)

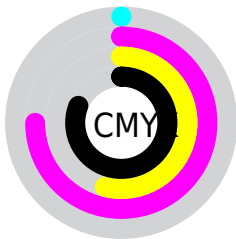
 Blue (9%)



 Red (19%)

 Yellow (5%)

 Blue (9%)

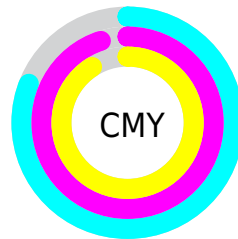


 Cyan (0%)


 Magenta (75%)

 Yellow (54%)

 Black (81%)



 Cyan (81%)

 Magenta (95%)

 Yellow (91%)

Brightness & Saturation Gradients

These gradients show how the Android color 4281338902 changes by changing the brightness by 10 percent. The first figure shows a shift by +10% for each color and the second figure -10%.

Similar to the brightness gradients but the following saturation gradients show a change of the Android color 4281338902 by changing the saturation by 10% instead.



4281338902



4281338902



4294962935



4279894017



4284495936



4278190080



4286205784



4287915888



4289692041



4291533732



4293441215



4294955482



4281338902



4281338902

■ 4281337619

■ 4281340185

■ 4281336335

■ 4281341469

■ 4281335821

■ 4281342496

■ 4281343780

■ 4281345063

■ 4281346347

■ 4281347630

■ 4281348658

■ 4281349941

Harmonies

Analogous

The Analogous color harmony consists of three colors that are next to each other on the color wheel.



4281011747



4281338902



4281274115

Triad

The Triadic color harmony groups three colors that are evenly spaced from another and form a triangle on the color wheel.



4281338902



4279245824



4278197552

Complementary

The Complementary color scheme is a pair of colors which are on the opposite of each other on the color wheel.



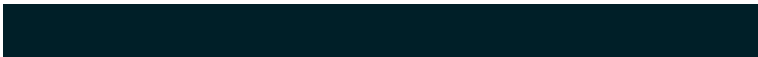
4281338902



4278988838

Split Complementary

Split-complementary colors differ from the complementary color scheme. The scheme consists of three colors, the original color and two neighbors of the complement color.



4278198056



4281338902



4278198028

Square

The Square scheme is like the rectangle color scheme, but the four colors are evenly spaced on the color wheel.



4281338902



4280162560



4278198299



4278327602

Rectangle

The Rectangle color scheme consists of four colors that form a rectangle on the color wheel.



4281338902



4281012736



4278198299



4278197806

Sweetspot

The Sweet Spot groups the original color and five complimentary colors.



4281338902



4282199859



4280683568



4280227352



4288585374



4280229663

Same Dimension

The Same Dimension uses a secret algorithm to generate beautiful new colors.



4281338902



4282189333



4281340940



4279702805



4283891736



4292214844

Inverse Universe

The Inverse Universe completely reimagines the original color for something new.



4281338902



4282189333



4278986800



4279702805



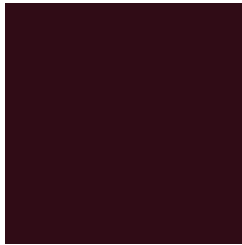
4283891736



4292214844

Previews

White Background



This preview shows how the Android color 4281338902 looks on a white background.

Color Contrast Check

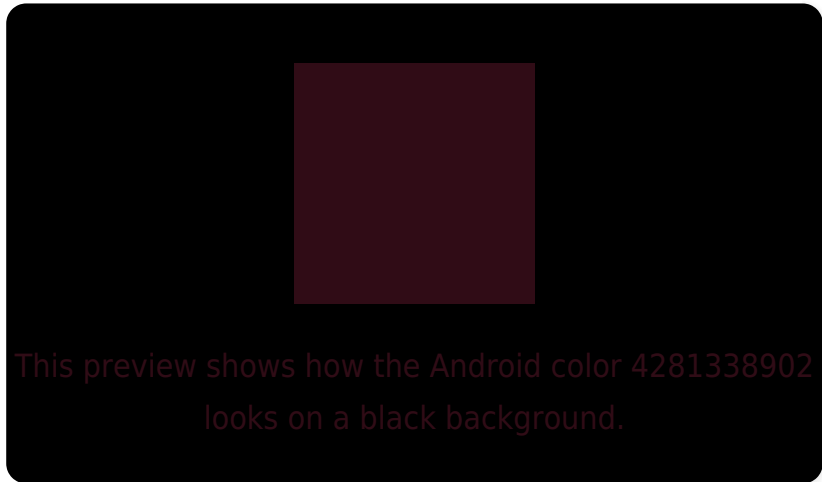
Large Text (above 18pt) WCAG AA ✓ Pass

Any Text WCAG AA ✓ Pass

Large Text (above 18pt) WCAG AAA ✓ Pass

Any Text WCAG AAA ✓ Pass

Black Background



Color Contrast Check

Large Text (above 18pt) WCAG AA × Fail

Any Text WCAG AA × Fail

Large Text (above 18pt) WCAG AAA × Fail

Any Text WCAG AAA × Fail

If you want to check with other color combinations, try the [Color Contrast Checker](#).

Android 4281338902 Background



This preview shows how black text looks on a background with the Android color 4281338902.



This preview shows how white text looks on a background with the Android color 4281338902.

Color Blindness Simulation

Color vision deficiency is a very complex topic, and I could not describe the different causes any better than Wikipedia does, so if you want to learn more, you should check out their [article about color blindness](#).

Dichromacy

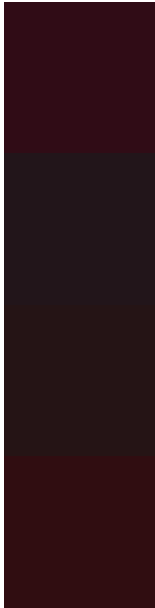


Original Color
4281338902

Protanopia
4279900701

Deuteranopia
4280228116

Trichromacy



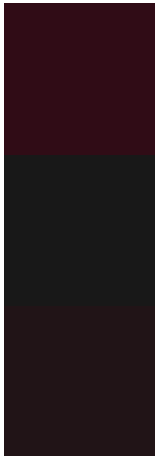
Original Color
4281338902

Protanomaly
4280423706

Deuteranomaly
4280620053

Tritanomaly
4281339153

Monochromacy



Original Color
4281338902

Achromatopsia
4279769112

Achromatomaly
4280357911

CSS Examples

Text

The CSS property to change the color of the text to Android 4281338902 is called "color". The color property can be set on classes, ids or directly on the HTML element.

This example shows how text in the color `rgb(48, 12, 22)` looks like.

```
.text, #text, p{  
    color:rgb(48, 12, 22)  
}
```

If you want to add a text shadow in that color use the text-shadow property, you can generate a text shadow directly with our [CSS Text Shadow Generator](#).

Here you see how black text with a 4 pixel rgb(48, 12, 22) colored shadow looks like.

```
.shadow{ text-shadow: 4px 4px 2px rgb(48, 12, 22) }
```

Border

The CSS property to change the border of an element to Android 4281338902 is called "border". The border property can be set on classes, ids or directly on the HTML element.

This example shows the color as border, it can be applied via the CSS property "border" or "border-color".

```
.border, #border, table{ border:4px solid rgb(48, 12, 22) }
```

If only the border color should be changed use the property `border-color`.

```
.border{ border-color:rgb(48, 12, 22) }
```

If you want to add a box shadow in that color use:

Here you see how a box with a 4 pixel `rgb(48, 12, 22)` colored shadow looks like.

```
.boxshadow{ -moz-box-shadow:4px 4px 4px  
4px rgb(48, 12, 22); -webkit-box-  
shadow:4px 4px 4px 4px rgb(48, 12, 22);  
box-shadow:4px 4px 4px 4px rgb(48, 12, 22)  
}
```

Background

The CSS property to change the background color of an element to Android 4281338902 is called "background". The background property can be set on classes, ids or directly on the HTML element.

```
.background, #background, body{  
background: rgb(48, 12, 22) }
```

If only the background color should be changed can be used:

```
.background{ background-color: rgb(48, 12,  
22) }
```

This example shows the color as background, it is applied via the CSS property "background".

To optimize and compress your CSS code, you can use our [online CSS compressor and optimizer](#) based on csstidy. If you want to create a linear or radial gradient as background or border, check our [CSS Gradient Generator](#).

Hey! You found this booklet interesting? Support Converting Colors with the new Membership Option!

The pro membership hides all ads, plus gives you double the colors in the color bucket, and more awesome pro features!

[Learn more, Memberships starting at \\$2.50/m!](#)

**Follow me
on Twitter!**

@ConvertingColor