

Converting Colors

Android(4281342995)

Have a look what the booklet for
Android(4281342995) contains.

Android(4281342995)	3
<i>Conversions</i>	4
<i>Details</i>	6
<i>Harmonies</i>	11
<i>Previews</i>	23
<i>Color Blindness Simulation</i>	26
<i>CSS Examples</i>	29

Color

Android(4281342995)

Conversions

Conversions Part 1

Format	Color
Hex	301C13
RGB	48, 28, 19
RGB Percent	19%, 11%, 7%
CMY	0.8118, 0.8902, 0.9255
CMYK	0.00, 0.42, 0.60, 0.81
HSL	19°, 43%, 13%
HSV	19°, 60%, 19%
XYZ	1.7517, 1.5059, 0.8144
YIQ	32.9540, 14.8090, 1.4410

Conversions

Conversions Part 2

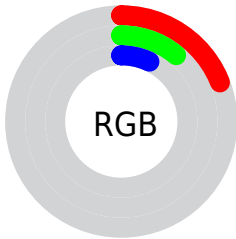
Format	Color
RYB	48, 32, 19
Decimal	3152915
CIELab	12.65, 8.60, 10.15
CIElCh	13, 13.306, 49.734
Yxy	1.5059, 0.4302, 0.3698
Android (android.graphics.Color)	4281342995 (0xFF301C13)
YUV	32.9540, -6.8793, 13.1953
Hunter-Lab	12.2715, 4.0051, 4.6551

Details

The Android color **4281342995** is a dark color, and the websafe version is hex **333333**. A complement of this color would be **4279445296**, and the grayscale version is **4280361249**.

A 20% lighter version of the original color is **4284500029**, and **4278190080** is the 20% darker color. If you saturate the color by 10%, you get **4281342222**, and if you desaturate by 10%, it is **4281343768**.

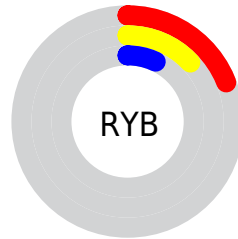
Distribution



 Red (19%)

 Green (11%)

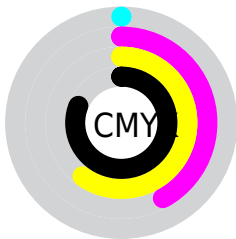
 Blue (7%)



 Red (19%)

 Yellow (13%)

 Blue (7%)

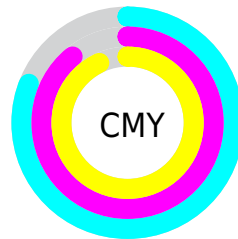


 Cyan (0%)

 Magenta (42%)

 Yellow (60%)

 Black (81%)



 Cyan (81%)

 Magenta (89%)

 Yellow (93%)

Brightness & Saturation Gradients

These gradients show how the Android color 4281342995 changes by changing the brightness by 10 percent. The first figure shows a shift by +10% for each color and the second figure -10%.

Similar to the brightness gradients but the following saturation gradients show a change of the Android color 4281342995 by changing the saturation by 10% instead.



4281342995



4281342995



4294967283



4280025856



4284500029



4278190080



4286144340



4287854701



4289630854



4291407008



4293314747



4294960343



4281342995



4281342995

■ 4281342222

■ 4281343768

■ 4281341193

■ 4281344797

■ 4281340421

■ 4281345569

■ 4281339648

■ 4281346342

■ 4281347371

■ 4281348144

■ 4281348917

■ 4281349689

■ 4281350718

Harmonies

Analogous

The Analogous color harmony consists of three colors that are next to each other on the color wheel.



4281539099



4281342995



4280950542

Triad

The Triadic color harmony groups three colors that are evenly spaced from another and form a triangle on the color wheel.



4281342995



4278854941



4280098866

Complementary

The Complementary color scheme is a pair of colors which are on the opposite of each other on the color wheel.



4281342995



4279445296

Split Complementary

Split-complementary colors differ from the complementary color scheme. The scheme consists of three colors, the original color and two neighbors of the complement color.



4279051059



4281342995



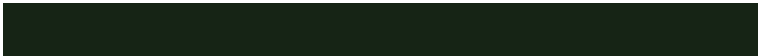
4278199847

Square

The Square scheme is like the rectangle color scheme, but the four colors are evenly spaced on the color wheel.



4281342995



4279641109



4278199599



4280884269

Rectangle

The Rectangle color scheme consists of four colors that form a rectangle on the color wheel.



4281342995



4280557837



4278199599



4279771443

Sweetspot

The Sweet Spot groups the original color and five complimentary colors.



4281342995



4282201650



4281340711



4280228376



4288585374



4280229663

Same Dimension

The Same Dimension uses a secret algorithm to generate beautiful new colors.



4281342995



4282195473



4281346579



4279702805



4283898624



4292231680

Inverse Universe

The Inverse Universe completely reimagines the original color for something new.



4279445296



4279316285



4279441712



4279571991



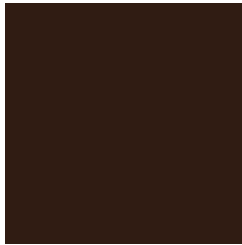
4278205527



4278228182

Previews

White Background



This preview shows how the Android color 4281342995 looks on a white background.

Color Contrast Check

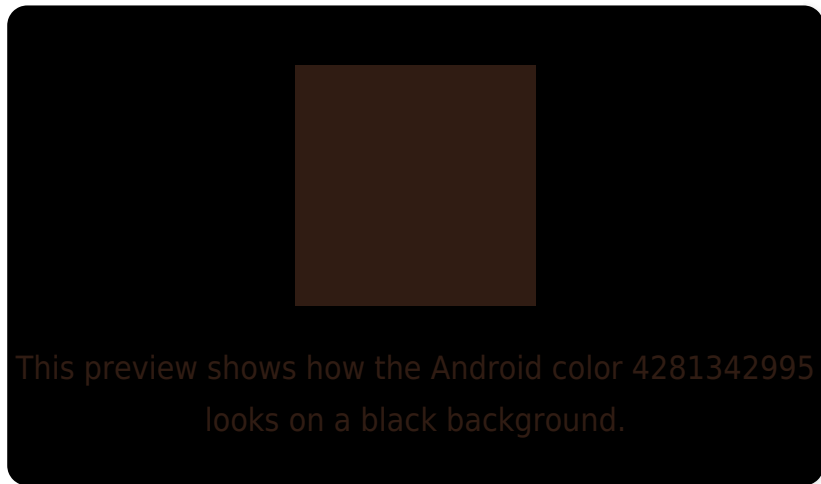
Large Text (above 18pt) WCAG AA ✓ Pass

Any Text WCAG AA ✓ Pass

Large Text (above 18pt) WCAG AAA ✓ Pass

Any Text WCAG AAA ✓ Pass

Black Background



Color Contrast Check

Large Text (above 18pt) WCAG AA × Fail

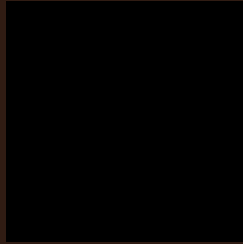
Any Text WCAG AA × Fail

Large Text (above 18pt) WCAG AAA × Fail

Any Text WCAG AAA × Fail

If you want to check with other color combinations, try the [Color Contrast Checker](#).

Android 4281342995 Background



This preview shows how black text looks on a background with the Android color 4281342995.

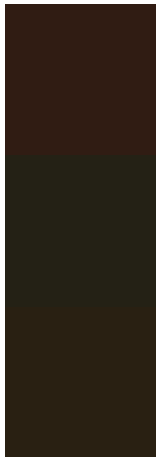


This preview shows how white text looks on a background with the Android color 4281342995.

Color Blindness Simulation

Color vision deficiency is a very complex topic, and I could not describe the different causes any better than Wikipedia does, so if you want to learn more, you should check out their [article about color blindness](#).

Dichromacy

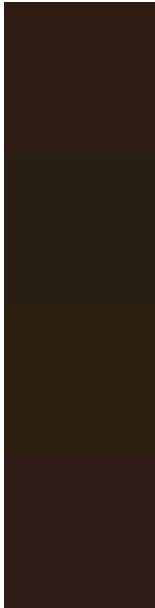


Original Color
4281342995

Protanopia
4280557845

Deuteranopia
4280885266

Trichromacy



Original Color
4281342995

Protanomaly
4280819476

Deuteranomaly
4281081618

Tritanomaly
4281408281

Monochromacy



Original Color
4281342995

Achromatopsia
4280361249

Achromatomaly
4280688412

CSS Examples

Text

The CSS property to change the color of the text to Android 4281342995 is called "color". The color property can be set on classes, ids or directly on the HTML element.

This example shows how text in the color `rgb(48, 28, 19)` looks like.

```
.text, #text, p{  
    color:rgb(48, 28, 19)  
}
```

If you want to add a text shadow in that color use the text-shadow property, you can generate a text shadow directly with our [CSS Text Shadow Generator](#).

Here you see how black text with a 4 pixel rgb(48, 28, 19) colored shadow looks like.

```
.shadow{ text-shadow: 4px 4px 2px rgb(48, 28, 19) }
```

Border

The CSS property to change the border of an element to Android 4281342995 is called "border". The border property can be set on classes, ids or directly on the HTML element.

This example shows the color as border, it can be applied via the CSS property "border" or "border-color".

```
.border, #border, table{ border:4px solid rgb(48, 28, 19) }
```

If only the border color should be changed use the property border-color.

```
.border{ border-color:rgb(48, 28, 19) }
```

If you want to add a box shadow in that color use:

Here you see how a box with a 4 pixel rgb(48, 28, 19) colored shadow looks like.

```
.boxshadow{ -moz-box-shadow:4px 4px 4px  
4px rgb(48, 28, 19); -webkit-box-  
shadow:4px 4px 4px 4px rgb(48, 28, 19);  
box-shadow:4px 4px 4px 4px rgb(48, 28, 19)  
}
```

Background

The CSS property to change the background color of an element to Android 4281342995 is called "background". The background property can be set on classes, ids or directly on the HTML element.

```
.background, #background, body{  
background: rgb(48, 28, 19) }
```

If only the background color should be changed can be used:

```
.background{ background-color: rgb(48, 28,  
19) }
```

This example shows the color as background, it is applied via the CSS property "background".

To optimize and compress your CSS code, you can use our [online CSS compressor and optimizer](#) based on csstidy. If you want to create a linear or radial gradient as background or border, check our [CSS Gradient Generator](#).

Hey! You found this booklet interesting? Support Converting Colors with the new Membership Option!

The pro membership hides all ads, plus gives you double the colors in the color bucket, and more awesome pro features!

[Learn more, Memberships starting at \\$2.50/m!](#)

**Follow me
on Twitter!**

@ConvertingColor