

Converting Colors

Android(4281537556)

Have a look what the booklet for
Android(4281537556) contains.

Android(4281537556)	3
<i>Conversions</i>	4
<i>Details</i>	6
<i>Harmonies</i>	11
<i>Previews</i>	23
<i>Color Blindness Simulation</i>	26
<i>CSS Examples</i>	29

Color

Android(4281537556)

Conversions

Conversions Part 1

Format	Color
Hex	331414
RGB	51, 20, 20
RGB Percent	20%, 8%, 8%
CMY	0.8000, 0.9216, 0.9216
CMYK	0.00, 0.61, 0.61, 0.80
HSL	0°, 44%, 14%
HSV	0°, 61%, 20%
XYZ	1.7417, 1.2546, 0.8122
YIQ	29.2690, 18.4760, 6.5720

Conversions

Conversions Part 2

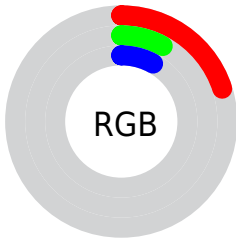
Format	Color
R_{YB}	51, 20, 20
Decimal	3347476
CIE _{Lab}	10.95, 15.64, 7.27
CIE _{LCh}	11, 17.244, 24.935
Yxy	1.2546, 0.4573, 0.3294
Android (android.graphics.Color)	4281537556 (0xFF331414)
YUV	29.2690, -4.5696, 19.0581
Hunter-Lab	11.2010, 8.1535, 3.5416

Details

The Android color **4281537556** is a dark color, and the websafe version is hex **330000**. A complement of this color would be **4279513907**, and the grayscale version is **4280098077**.

A 20% lighter version of the original color is **4284759870**, and **4278190080** is the 20% darker color. If you saturate the color by 10%, you get **4281536271**, and if you desaturate by 10%, it is **4281538841**.

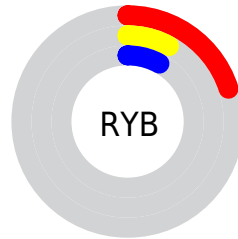
Distribution



Red (20%)

Green (8%)

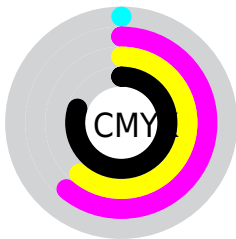
Blue (8%)



Red (20%)

Yellow (8%)

Blue (8%)

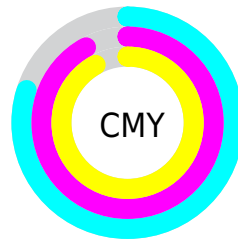


Cyan (0%)

Magenta (61%)

Yellow (61%)

Black (80%)



Cyan (80%)

Magenta (92%)

Yellow (92%)

Brightness & Saturation Gradients

These gradients show how the Android color 4281537556 changes by changing the brightness by 10 percent. The first figure shows a shift by +10% for each color and the second figure -10%.

Similar to the brightness gradients but the following saturation gradients show a change of the Android color 4281537556 by changing the saturation by 10% instead.



4281537556



4281537556



4294965236



4280221696



4284759870



4278190080



4286404437



4288180078



4289956231



4291797921



4293640124



4294957784



4281537556



4281537556

■ 4281536271

■ 4281538841

■ 4281534986

■ 4281540126

■ 4281533701

■ 4281541411

■ 4281532416

■ 4281542696

■ 4281544238

■ 4281545523

■ 4281546808

■ 4281548093

■ 4281549378

Harmonies

Analogous

The Analogous color harmony consists of three colors that are next to each other on the color wheel.



4281471776



4281537556



4281276422

Triad

The Triadic color harmony groups three colors that are evenly spaced from another and form a triangle on the color wheel.



4281537556



4278985230



4278263605

Complementary

The Complementary color scheme is a pair of colors which are on the opposite of each other on the color wheel.



4281537556



4279513907

Split Complementary

Split-complementary colors differ from the complementary color scheme. The scheme consists of three colors, the original color and two neighbors of the complement color.



4278198832



4281537556



4278199067

Square

The Square scheme is like the rectangle color scheme, but the four colors are evenly spaced on the color wheel.



4281537556



4280033281



4278199079



4279966515

Rectangle

The Rectangle color scheme consists of four colors that form a rectangle on the color wheel.



4281537556



4280949504



4278199079



4278198324

Sweetspot

The Sweet Spot groups the original color and five complimentary colors.



4281537556



4282529334



4281537587



4280359450



4288782753



4280361249

Same Dimension

The Same Dimension uses a secret algorithm to generate beautiful new colors.



4281537556



4282520082



4281541652



4279899927



4284022784



4292411392

Inverse Universe

The Inverse Universe completely reimagines the original color for something new.



4279513907



4279386690



4279510067



4279704090



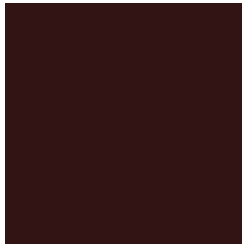
4278212953



4278245849

Previews

White Background



This preview shows how the Android color 4281537556 looks on a white background.

Color Contrast Check

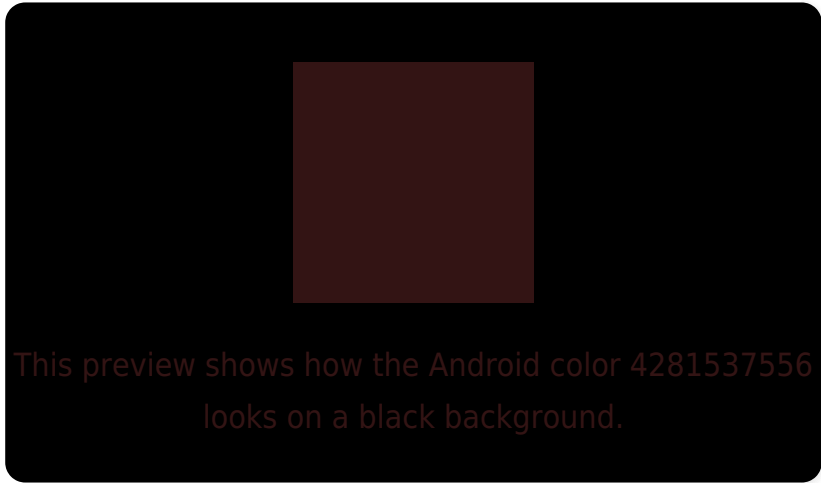
Large Text (above 18pt) WCAG AA ✓ Pass

Any Text WCAG AA ✓ Pass

Large Text (above 18pt) WCAG AAA ✓ Pass

Any Text WCAG AAA ✓ Pass

Black Background



Color Contrast Check

Large Text (above 18pt) WCAG AA × Fail

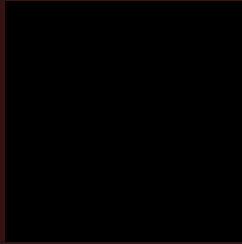
Any Text WCAG AA × Fail

Large Text (above 18pt) WCAG AAA × Fail

Any Text WCAG AAA × Fail

If you want to check with other color combinations, try the [Color Contrast Checker](#).

Android 4281537556 Background



This preview shows how black text looks on a background with the Android color 4281537556.



This preview shows how white text looks on a background with the Android color 4281537556.

Color Blindness Simulation

Color vision deficiency is a very complex topic, and I could not describe the different causes any better than Wikipedia does, so if you want to learn more, you should check out their [article about color blindness](#).

Dichromacy

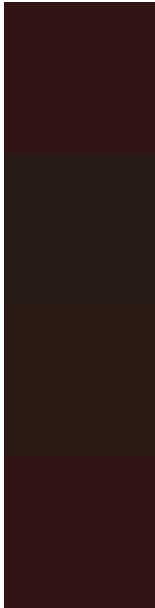


Original Color
4281537556

Protanopia
4280294936

Deuteranopia
4280622354

Trichromacy



Original Color

4281537556

Protanomaly

4280752663

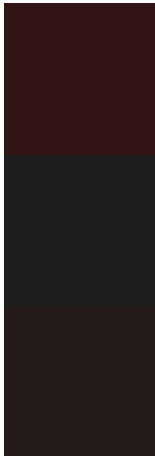
Deuteranomaly

4280949267

Tritanomaly

4281537557

Monochromacy



Original Color

4281537556

Achromatopsia

4280098077

Achromatomaly

4280621594

CSS Examples

Text

The CSS property to change the color of the text to Android 4281537556 is called "color". The color property can be set on classes, ids or directly on the HTML element.

This example shows how text in the color `rgb(51, 20, 20)` looks like.

```
.text, #text, p{  
    color:rgb(51, 20, 20)  
}
```

If you want to add a text shadow in that color use the text-shadow property, you can generate a text shadow directly with our [CSS Text Shadow Generator](#).

Here you see how black text with a 4 pixel rgb(51, 20, 20) colored shadow looks like.

```
.shadow{ text-shadow: 4px 4px 2px rgb(51, 20, 20) }
```

Border

The CSS property to change the border of an element to Android 4281537556 is called "border". The border property can be set on classes, ids or directly on the HTML element.

This example shows the color as border, it can be applied via the CSS property "border" or "border-color".

```
.border, #border, table{ border:4px solid rgb(51, 20, 20) }
```

If only the border color should be changed use the property border-color.

```
.border{ border-color:rgb(51, 20, 20) }
```

If you want to add a box shadow in that color use:

Here you see how a box with a 4 pixel rgb(51, 20, 20) colored shadow looks like.

```
.boxshadow{ -moz-box-shadow:4px 4px 4px  
4px rgb(51, 20, 20); -webkit-box-  
shadow:4px 4px 4px 4px rgb(51, 20, 20);  
box-shadow:4px 4px 4px 4px rgb(51, 20, 20)  
}
```

Background

The CSS property to change the background color of an element to Android 4281537556 is called "background". The background property can be set on classes, ids or directly on the HTML element.

```
.background, #background, body{  
background: rgb(51, 20, 20) }
```

If only the background color should be changed can be used:

```
.background{ background-color: rgb(51, 20,  
20) }
```

This example shows the color as background, it is applied via the CSS property "background".

To optimize and compress your CSS code, you can use our [online CSS compressor and optimizer](#) based on csstidy. If you want to create a linear or radial gradient as background or border, check our [CSS Gradient Generator](#).

Hey! You found this booklet interesting? Support Converting Colors with the new Membership Option!

The pro membership hides all ads, plus gives you double the colors in the color bucket, and more awesome pro features!

[Learn more, Memberships starting at \\$2.50/m!](#)

**Follow me
on Twitter!**

@ConvertingColor