

Converting Colors

Android(4281538075)

Have a look what the booklet for
Android(4281538075) contains.

Android(4281538075)	3
<i>Conversions</i>	4
<i>Details</i>	6
<i>Harmonies</i>	11
<i>Previews</i>	23
<i>Color Blindness Simulation</i>	26
<i>CSS Examples</i>	29

Color

Android(4281538075)

Conversions

Conversions Part 1

Format	Color
Hex	33161B
RGB	51, 22, 27
RGB Percent	20%, 9%, 11%
CMY	0.8000, 0.9137, 0.8941
CMYK	0.00, 0.57, 0.47, 0.80
HSL	350°, 40%, 14%
HSV	350°, 57%, 20%
XYZ	1.8500, 1.3568, 1.2013
YIQ	31.2410, 15.6790, 7.7030

Conversions

Conversions Part 2

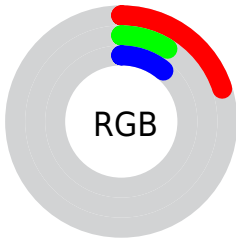
Format	Color
RYB	51, 22, 27
Decimal	3347995
CIELab	11.67, 15.24, 3.18
CIELCh	12, 15.571, 11.775
Yxy	1.3568, 0.4197, 0.3078
Android (android.graphics.Color)	4281538075 (0xFF33161B)
YUV	31.2410, -2.0908, 17.3286
Hunter-Lab	11.6480, 7.9661, 2.0389

Details

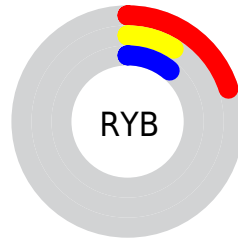
The Android color **4281538075** is a dark color, and the websafe version is hex **330000**. A complement of this color would be **4279644974**, and the grayscale version is **4280229663**.

A 20% lighter version of the original color is **4284695110**, and **4278190080** is the 20% darker color. If you saturate the color by 10%, you get **4281536791**, and if you desaturate by 10%, it is **4281539359**.

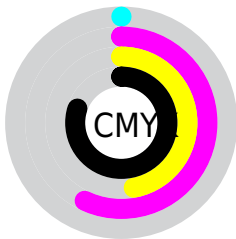
Distribution



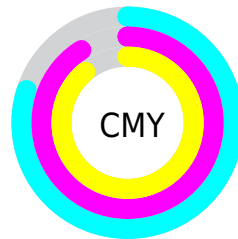
- Red (20%)
- Green (9%)
- Blue (11%)



- Red (20%)
- Yellow (9%)
- Blue (11%)



- Cyan (0%)
- Magenta (57%)
- Yellow (47%)
- Black (80%)



- Cyan (80%)
- Magenta (91%)
- Yellow (89%)

Brightness & Saturation Gradients

These gradients show how the Android color 4281538075 changes by changing the brightness by 10 percent. The first figure shows a shift by +10% for each color and the second figure -10%.

Similar to the brightness gradients but the following saturation gradients show a change of the Android color 4281538075 by changing the saturation by 10% instead.



4281538075



4281538075



4294966014



4280352768



4284695110



4278190080



4286339422



4288115318



4289891216



4291667626



4293575110



4294958562



4281538075



4281538075

■ 4281536791

■ 4281539359

■ 4281535507

■ 4281540643

■ 4281534222

■ 4281541928

■ 4281532938

■ 4281543212

■ 4281532425

■ 4281544752

■ 4281546036

■ 4281547321

■ 4281548605

■ 4281549889

Harmonies

Analogous

The Analogous color harmony consists of three colors that are next to each other on the color wheel.



4281276198



4281538075



4281407504

Triad

The Triadic color harmony groups three colors that are evenly spaced from another and form a triangle on the color wheel.



4281538075



4279640589



4278198835

Complementary

The Complementary color scheme is a pair of colors which are on the opposite of each other on the color wheel.



4281538075



4279644974

Split Complementary

Split-complementary colors differ from the complementary color scheme. The scheme consists of three colors, the original color and two neighbors of the complement color.



4278199341



4281538075



4278592536

Square

The Square scheme is like the rectangle color scheme, but the four colors are evenly spaced on the color wheel.



4281538075



4280426245



4278199331



4279574068

Rectangle

The Rectangle color scheme consists of four colors that form a rectangle on the color wheel.



4281538075



4281211657



4278199331



4278199089

Sweetspot

The Sweet Spot groups the original color and five complimentary colors.



4281538075



4282529593



4281210419



4280359708



4288782753



4280361249

Same Dimension

The Same Dimension uses a secret algorithm to generate beautiful new colors.



4281538075



4282520861



4281540374



4279899927



4284022799



4292411429

Inverse Universe

The Inverse Universe completely reimagines the original color for something new.



4281538075



4282520861



4279642675



4279899927



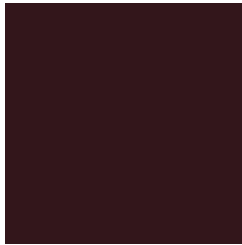
4284022799



4292411429

Previews

White Background



This preview shows how the Android color 4281538075 looks on a white background.

Color Contrast Check

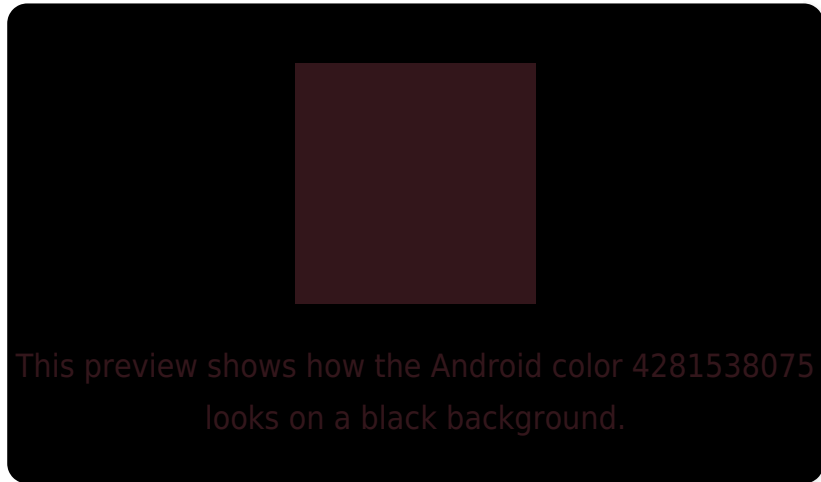
Large Text (above 18pt) WCAG AA ✓ Pass

Any Text WCAG AA ✓ Pass

Large Text (above 18pt) WCAG AAA ✓ Pass

Any Text WCAG AAA ✓ Pass

Black Background



Color Contrast Check

Large Text (above 18pt) WCAG AA × Fail

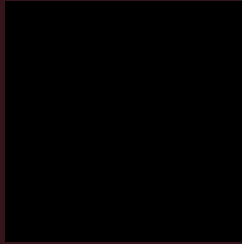
Any Text WCAG AA × Fail

Large Text (above 18pt) WCAG AAA × Fail

Any Text WCAG AAA × Fail

If you want to check with other color combinations, try the [Color Contrast Checker](#).

Android 4281538075 Background



This preview shows how black text looks on a background with the Android color 4281538075.

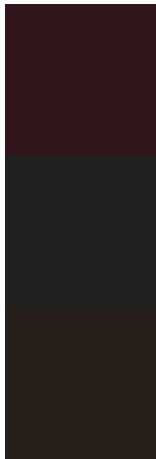


This preview shows how white text looks on a background with the Android color 4281538075.

Color Blindness Simulation

Color vision deficiency is a very complex topic, and I could not describe the different causes any better than Wikipedia does, so if you want to learn more, you should check out their [article about color blindness](#).

Dichromacy

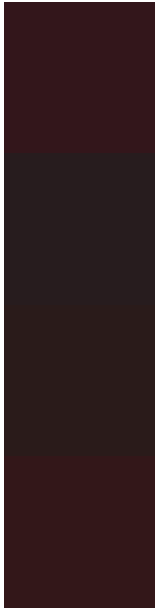


Original Color
4281538075

Protanopia
4280295456

Deuteranopia
4280622618

Trichromacy



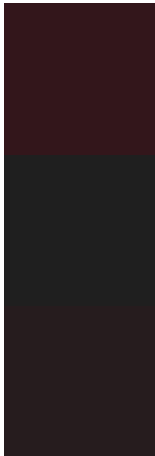
Original Color
4281538075

Protanomaly
4280753182

Deuteranomaly
4280949530

Tritanomaly
4281538329

Monochromacy



Original Color
4281538075

Achromatopsia
4280229663

Achromatomaly
4280687646

CSS Examples

Text

The CSS property to change the color of the text to Android 4281538075 is called "color". The color property can be set on classes, ids or directly on the HTML element.

This example shows how text in the color `rgb(51, 22, 27)` looks like.

```
.text, #text, p{  
    color:rgb(51, 22, 27)  
}
```

If you want to add a text shadow in that color use the text-shadow property, you can generate a text shadow directly with our [CSS Text Shadow Generator](#).

Here you see how black text with a 4 pixel rgb(51, 22, 27) colored shadow looks like.

```
.shadow{ text-shadow: 4px 4px 2px rgb(51, 22, 27) }
```

Border

The CSS property to change the border of an element to Android 4281538075 is called "border". The border property can be set on classes, ids or directly on the HTML element.

This example shows the color as border, it can be applied via the CSS property "border" or "border-color".

```
.border, #border, table{ border:4px solid rgb(51, 22, 27) }
```

If only the border color should be changed use the property `border-color`.

```
.border{ border-color:rgb(51, 22, 27) }
```

If you want to add a box shadow in that color use:

Here you see how a box with a 4 pixel `rgb(51, 22, 27)` colored shadow looks like.

```
.boxshadow{ -moz-box-shadow:4px 4px 4px  
4px rgb(51, 22, 27); -webkit-box-  
shadow:4px 4px 4px 4px rgb(51, 22, 27);  
box-shadow:4px 4px 4px 4px rgb(51, 22, 27)  
}
```

Background

The CSS property to change the background color of an element to Android 4281538075 is called "background". The background property can be set on classes, ids or directly on the HTML element.

```
.background, #background, body{  
background: rgb(51, 22, 27) }
```

If only the background color should be changed can be used:

```
.background{ background-color: rgb(51, 22,  
27) }
```

This example shows the color as background, it is applied via the CSS property "background".

To optimize and compress your CSS code, you can use our [online CSS compressor and optimizer](#) based on csstidy. If you want to create a linear or radial gradient as background or border, check our [CSS Gradient Generator](#).

Hey! You found this booklet interesting? Support Converting Colors with the new Membership Option!

The pro membership hides all ads, plus gives you double the colors in the color bucket, and more awesome pro features!

[Learn more, Memberships starting at \\$2.50/m!](#)

**Follow me
on Twitter!**

@ConvertingColor