

Converting Colors

Android(4281539353)

Have a look what the booklet for
Android(4281539353) contains.

Android(4281539353)	3
<i>Conversions</i>	4
<i>Details</i>	6
<i>Harmonies</i>	11
<i>Previews</i>	23
<i>Color Blindness Simulation</i>	26
<i>CSS Examples</i>	29

Color

Android(4281539353)

Conversions

Conversions Part 1

Format	Color
Hex	331B19
RGB	51, 27, 25
RGB Percent	20%, 11%, 10%
CMY	0.8000, 0.8941, 0.9020
CMYK	0.00, 0.47, 0.51, 0.80
HSL	5°, 34%, 15%
HSV	5°, 51%, 20%
XYZ	1.9326, 1.5579, 1.1185
YIQ	33.9480, 14.9460, 4.4660

Conversions

Conversions Part 2

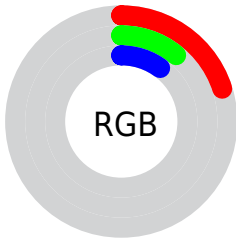
Format	Color
RYB	51, 27, 25
Decimal	3349273
CIELab	12.97, 11.60, 6.47
CIELCh	13, 13.280, 29.174
Yxy	1.5579, 0.4193, 0.3380
Android (android.graphics.Color)	4281539353 (0xFF331B19)
YUV	33.9480, -4.4114, 14.9546
Hunter-Lab	12.4814, 5.7967, 3.4237

Details

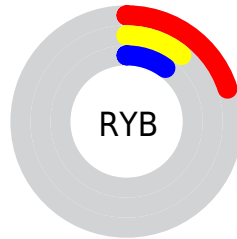
The Android color **4281539353** is a dark color, and the websafe version is hex **330000**. A complement of this color would be **4279841075**, and the grayscale version is **4280427042**.

A 20% lighter version of the original color is **4284696388**, and **4278190080** is the 20% darker color. If you saturate the color by 10%, you get **4281538068**, and if you desaturate by 10%, it is **4281540638**.

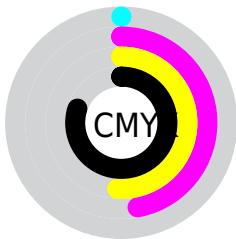
Distribution



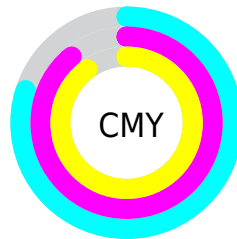
- Red (20%)
- Green (11%)
- Blue (10%)



- Red (20%)
- Yellow (11%)
- Blue (10%)



- Cyan (0%)
- Magenta (47%)
- Yellow (51%)
- Black (80%)



- Cyan (80%)
- Magenta (89%)
- Yellow (90%)

Brightness & Saturation Gradients

These gradients show how the Android color 4281539353 changes by changing the brightness by 10 percent. The first figure shows a shift by +10% for each color and the second figure -10%.

Similar to the brightness gradients but the following saturation gradients show a change of the Android color 4281539353 by changing the saturation by 10% instead.



4281539353



4281539353

4294967291



4280287488



4284696388



4278190080



4286340699



4288051060



4289827213



4291669160



4293511107



4294960095



4281539353



4281539353

■ 4281538068

■ 4281540638

■ 4281537039

■ 4281541667

■ 4281535754

■ 4281542952

■ 4281534469

■ 4281544237

■ 4281533440

■ 4281545523

■ 4281546552

■ 4281547837

■ 4281549122

■ 4281550151

Harmonies

Analogous

The Analogous color harmony consists of three colors that are next to each other on the color wheel.



4281473570



4281539353



4281277970

Triad

The Triadic color harmony groups three colors that are evenly spaced from another and form a triangle on the color wheel.



4281539353



4279444760



4279444020

Complementary

The Complementary color scheme is a pair of colors which are on the opposite of each other on the color wheel.



4281539353



4279841075

Split Complementary

Split-complementary colors differ from the complementary color scheme. The scheme consists of three colors, the original color and two neighbors of the complement color.



4278396209



4281539353



4278593057

Square

The Square scheme is like the rectangle color scheme, but the four colors are evenly spaced on the color wheel.



4281539353



4280165393



4278199850



4280426290

Rectangle

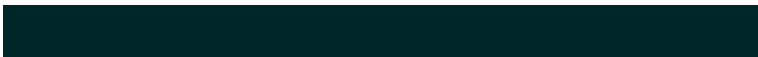
The Rectangle color scheme consists of four colors that form a rectangle on the color wheel.



4281539353



4281016335



4278199850



4279116595

Sweetspot

The Sweet Spot groups the original color and five complimentary colors.



4281539353



4282530104



4281538865



4280359963



4288782753



4280361249

Same Dimension

The Same Dimension uses a secret algorithm to generate beautiful new colors.



4281539353



4282522906



4281542681



4279899927



4284024576



4292415744

Inverse Universe

The Inverse Universe completely reimagines the original color for something new.



4279841075



4279910210



4279837747



4279703834



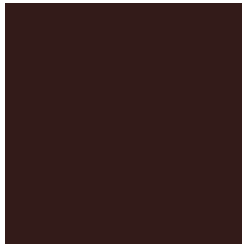
4278211161



4278241497

Previews

White Background



This preview shows how the Android color 4281539353 looks on a white background.

Color Contrast Check

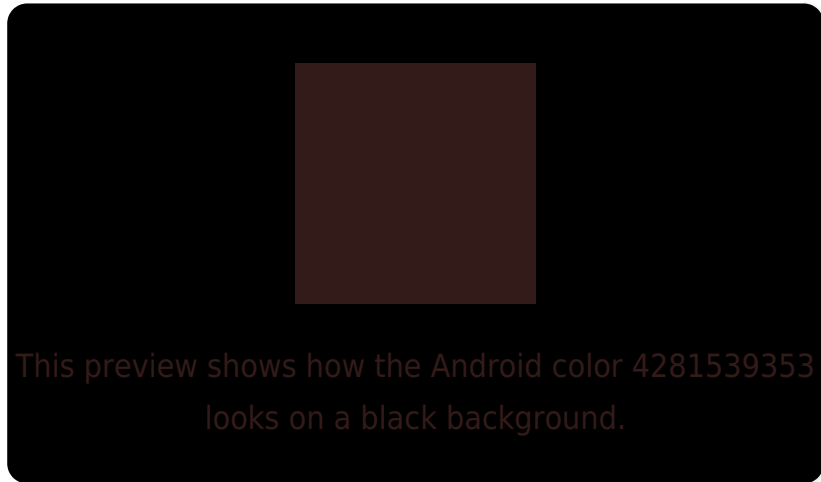
Large Text (above 18pt) WCAG AA ✓ Pass

Any Text WCAG AA ✓ Pass

Large Text (above 18pt) WCAG AAA ✓ Pass

Any Text WCAG AAA ✓ Pass

Black Background



Color Contrast Check

Large Text (above 18pt) WCAG AA × Fail

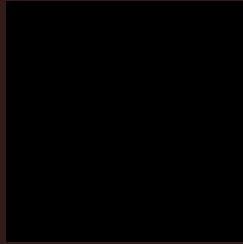
Any Text WCAG AA × Fail

Large Text (above 18pt) WCAG AAA × Fail

Any Text WCAG AAA × Fail

If you want to check with other color combinations, try the [Color Contrast Checker](#).

Android 4281539353 Background



This preview shows how black text looks on a background with the Android color 4281539353.

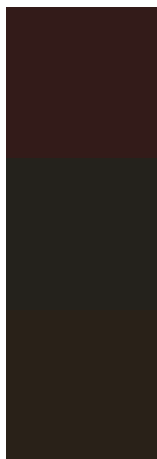


This preview shows how white text looks on a background with the Android color 4281539353.

Color Blindness Simulation

Color vision deficiency is a very complex topic, and I could not describe the different causes any better than Wikipedia does, so if you want to learn more, you should check out their [article about color blindness](#).

Dichromacy



Original Color

4281539353

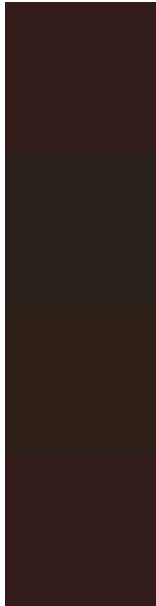
Protanopia

4280558108

Deuteranopia

4280885528

Trichromacy



Original Color

4281539353

Protanomaly

4280885019

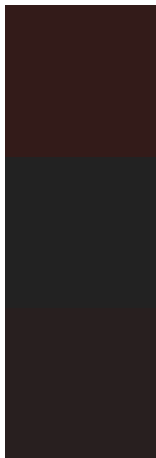
Deuteranomaly

4281147160

Tritanomaly

4281539099

Monochromacy



Original Color

4281539353

Achromatopsia

4280427042

Achromatomaly

4280819487

CSS Examples

Text

The CSS property to change the color of the text to Android 4281539353 is called "color". The color property can be set on classes, ids or directly on the HTML element.

This example shows how text in the color `rgb(51, 27, 25)` looks like.

```
.text, #text, p{  
    color:rgb(51, 27, 25)  
}
```

If you want to add a text shadow in that color use the text-shadow property, you can generate a text shadow directly with our [CSS Text Shadow Generator](#).

Here you see how black text with a 4 pixel rgb(51, 27, 25) colored shadow looks like.

```
.shadow{ text-shadow: 4px 4px 2px rgb(51, 27, 25) }
```

Border

The CSS property to change the border of an element to Android 4281539353 is called "border". The border property can be set on classes, ids or directly on the HTML element.

This example shows the color as border, it can be applied via the CSS property "border" or "border-color".

```
.border, #border, table{ border:4px solid rgb(51, 27, 25) }
```

If only the border color should be changed use the property border-color.

```
.border{ border-color:rgb(51, 27, 25) }
```

If you want to add a box shadow in that color use:

Here you see how a box with a 4 pixel rgb(51, 27, 25) colored shadow looks like.

```
.boxshadow{ -moz-box-shadow:4px 4px 4px  
4px rgb(51, 27, 25); -webkit-box-  
shadow:4px 4px 4px 4px rgb(51, 27, 25);  
box-shadow:4px 4px 4px 4px rgb(51, 27, 25)  
}
```

Background

The CSS property to change the background color of an element to Android 4281539353 is called "background". The background property can be set on classes, ids or directly on the HTML element.

```
.background, #background, body{  
background: rgb(51, 27, 25) }
```

If only the background color should be changed can be used:

```
.background{ background-color: rgb(51, 27,  
25) }
```

This example shows the color as background, it is applied via the CSS property "background".

To optimize and compress your CSS code, you can use our [online CSS compressor and optimizer](#) based on csstidy. If you want to create a linear or radial gradient as background or border, check our [CSS Gradient Generator](#).

Hey! You found this booklet interesting? Support Converting Colors with the new Membership Option!

The pro membership hides all ads, plus gives you double the colors in the color bucket, and more awesome pro features!

[Learn more, Memberships starting at \\$2.50/m!](#)

**Follow me
on Twitter!**

@ConvertingColor