

Converting Colors

Android(4281540373)

Have a look what the booklet for
Android(4281540373) contains.

Android(4281540373)	3
<i>Conversions</i>	4
<i>Details</i>	6
<i>Harmonies</i>	11
<i>Previews</i>	23
<i>Color Blindness Simulation</i>	26
<i>CSS Examples</i>	29

Color

Android(4281540373)

Conversions

Conversions Part 1

Format	Color
Hex	331F15
RGB	51, 31, 21
RGB Percent	20%, 12%, 8%
CMY	0.8000, 0.8784, 0.9176
CMYK	0.00, 0.39, 0.59, 0.80
HSL	20°, 42%, 14%
HSV	20°, 59%, 20%
XYZ	1.9906, 1.7379, 0.9400
YIQ	35.8400, 15.1300, 1.1300

Conversions

Conversions Part 2

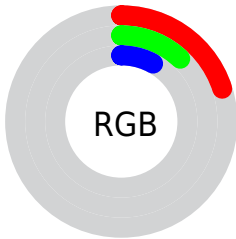
Format	Color
RYB	51, 36, 21
Decimal	3350293
CIELab	14.05, 8.31, 10.77
CIElCh	14, 13.605, 52.361
Yxy	1.7379, 0.4264, 0.3723
Android (android.graphics.Color)	4281540373 (0xFF331F15)
YUV	35.8400, -7.3161, 13.2953
Hunter-Lab	13.1830, 3.8825, 5.0005

Details

The Android color **4281540373** is a dark color, and the websafe version is hex **333333**. A complement of this color would be **4279576883**, and the grayscale version is **4280558628**.

A 20% lighter version of the original color is **4284697407**, and **4278190080** is the 20% darker color. If you saturate the color by 10%, you get **4281539600**, and if you desaturate by 10%, it is **4281541146**.

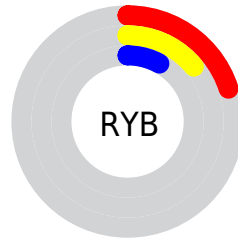
Distribution



Red (20%)

Green (12%)

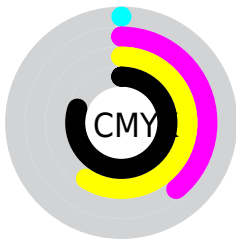
Blue (8%)



Red (20%)

Yellow (14%)

Blue (8%)

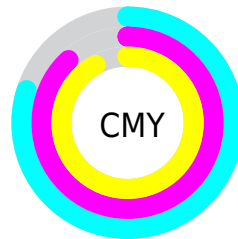


Cyan (0%)

Magenta (39%)

Yellow (59%)

Black (80%)



Cyan (80%)

Magenta (88%)

Yellow (92%)

Brightness & Saturation Gradients

These gradients show how the Android color 4281540373 changes by changing the brightness by 10 percent. The first figure shows a shift by +10% for each color and the second figure -10%.

Similar to the brightness gradients but the following saturation gradients show a change of the Android color 4281540373 by changing the saturation by 10% instead.



4281540373



4281540373



4294967286



4280223744



4284697407



4278190080



4286341975



4288052335



4289828488



4291670179



4293577918



4294961370



4281540373



4281540373

■ 4281539600

■ 4281541146

■ 4281538571

■ 4281542175

■ 4281537798

■ 4281542948

■ 4281536769

■ 4281543977

■ 4281536768

■ 4281544751

■ 4281545524

■ 4281546553

■ 4281547326

■ 4281548355

Harmonies

Analogous

The Analogous color harmony consists of three colors that are next to each other on the color wheel.



4281736477



4281540373



4281082384

Triad

The Triadic color harmony groups three colors that are evenly spaced from another and form a triangle on the color wheel.



4281540373



4278921505



4280361525

Complementary

The Complementary color scheme is a pair of colors which are on the opposite of each other on the color wheel.



4281540373



4279576883

Split Complementary

Split-complementary colors differ from the complementary color scheme. The scheme consists of three colors, the original color and two neighbors of the complement color.



4279313718



4281540373



4278200619

Square

The Square scheme is like the rectangle color scheme, but the four colors are evenly spaced on the color wheel.



4281540373



4279772952



4278331442



4281147183

Rectangle

The Rectangle color scheme consists of four colors that form a rectangle on the color wheel.



4281540373



4280689680



4278331442



4280034102

Sweetspot

The Sweet Spot groups the original color and five complimentary colors.



4281540373



4282530358



4281537833



4280359962



4288782753



4280361249

Same Dimension

The Same Dimension uses a secret algorithm to generate beautiful new colors.



4281540373



4282524435



4281544213



4279900183



4284030464



4292429824

Inverse Universe

The Inverse Universe completely reimagines the original color for something new.



4279576883



4279448386



4279573043



4279703834



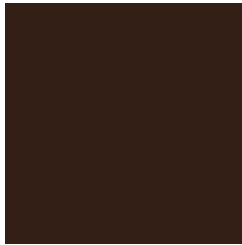
4278205273



4278227161

Previews

White Background



This preview shows how the Android color 4281540373 looks on a white background.

Color Contrast Check

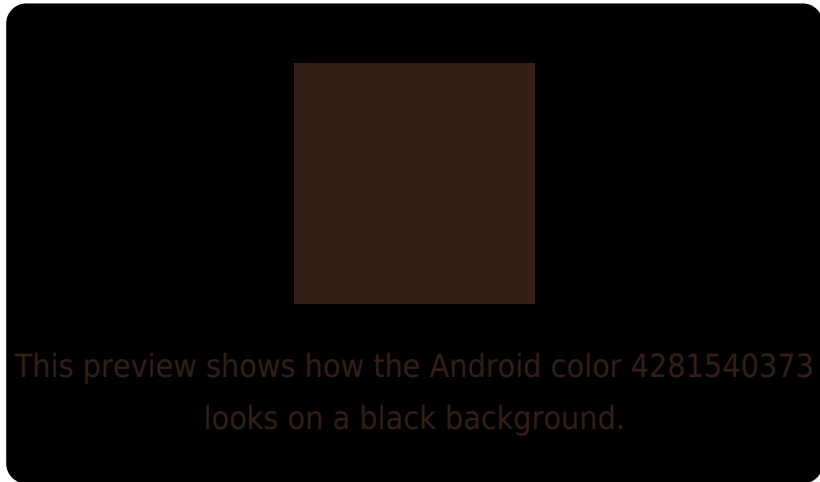
Large Text (above 18pt) WCAG AA ✓ Pass

Any Text WCAG AA ✓ Pass

Large Text (above 18pt) WCAG AAA ✓ Pass

Any Text WCAG AAA ✓ Pass

Black Background



Color Contrast Check

Large Text (above 18pt) WCAG AA × Fail

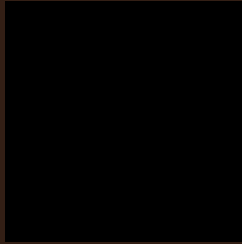
Any Text WCAG AA × Fail

Large Text (above 18pt) WCAG AAA × Fail

Any Text WCAG AAA × Fail

If you want to check with other color combinations, try the [Color Contrast Checker](#).

Android 4281540373 Background



This preview shows how black text looks on a background with the Android color 4281540373.

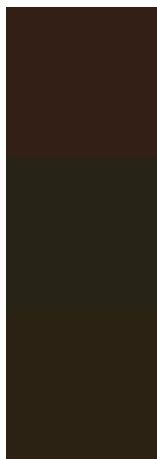


This preview shows how white text looks on a background with the Android color 4281540373.

Color Blindness Simulation

Color vision deficiency is a very complex topic, and I could not describe the different causes any better than Wikipedia does, so if you want to learn more, you should check out their [article about color blindness](#).

Dichromacy



Original Color

4281540373

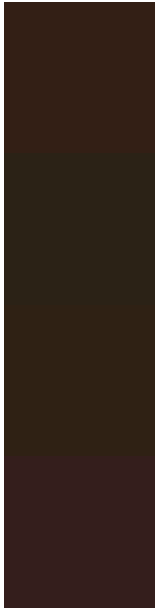
Protanopia

4280755223

Deuteranopia

4281082388

Trichromacy



Original Color

4281540373

Protanomaly

4281016854

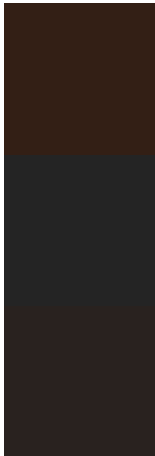
Deuteranomaly

4281278740

Tritanomaly

4281605660

Monochromacy



Original Color

4281540373

Achromatopsia

4280558628

Achromatomaly

4280885791

CSS Examples

Text

The CSS property to change the color of the text to Android 4281540373 is called "color". The color property can be set on classes, ids or directly on the HTML element.

This example shows how text in the color `rgb(51, 31, 21)` looks like.

```
.text, #text, p{  
    color:rgb(51, 31, 21)  
}
```

If you want to add a text shadow in that color use the text-shadow property, you can generate a text shadow directly with our [CSS Text Shadow Generator](#).

Here you see how black text with a 4 pixel rgb(51, 31, 21) colored shadow looks like.

```
.shadow{ text-shadow: 4px 4px 2px rgb(51, 31, 21) }
```

Border

The CSS property to change the border of an element to Android 4281540373 is called "border". The border property can be set on classes, ids or directly on the HTML element.

This example shows the color as border, it can be applied via the CSS property "border" or "border-color".

```
.border, #border, table{ border:4px solid rgb(51, 31, 21) }
```

If only the border color should be changed use the property border-color.

```
.border{ border-color:rgb(51, 31, 21) }
```

If you want to add a box shadow in that color use:

Here you see how a box with a 4 pixel rgb(51, 31, 21) colored shadow looks like.

```
.boxshadow{ -moz-box-shadow:4px 4px 4px  
4px rgb(51, 31, 21); -webkit-box-  
shadow:4px 4px 4px 4px rgb(51, 31, 21);  
box-shadow:4px 4px 4px 4px rgb(51, 31, 21)  
}
```

Background

The CSS property to change the background color of an element to Android 4281540373 is called "background". The background property can be set on classes, ids or directly on the HTML element.

```
.background, #background, body{  
background: rgb(51, 31, 21) }
```

If only the background color should be changed can be used:

```
.background{ background-color: rgb(51, 31,  
21) }
```

This example shows the color as background, it is applied via the CSS property "background".

To optimize and compress your CSS code, you can use our [online CSS compressor and optimizer](#) based on csstidy. If you want to create a linear or radial gradient as background or border, check our [CSS Gradient Generator](#).

Hey! You found this booklet interesting? Support Converting Colors with the new Membership Option!

The pro membership hides all ads, plus gives you double the colors in the color bucket, and more awesome pro features!

[Learn more, Memberships starting at \\$2.50/m!](#)

**Follow me
on Twitter!**

@ConvertingColor