

# Converting Colors

Android(4281603337)

Have a look what the booklet for  
Android(4281603337) contains.

<b>Android(4281603337)</b> .....	3
<b><i>Conversions</i></b> .....	4
<b><i>Details</i></b> .....	6
<b><i>Harmonies</i></b> .....	11
<b><i>Previews</i></b> .....	23
<b><i>Color Blindness Simulation</i></b> .....	26
<b><i>CSS Examples</i></b> .....	29

# Color

**Android(4281603337)**

# Conversions

## Conversions Part 1

Format	Color
Hex	341509
RGB	52, 21, 9
RGB Percent	20%, 8%, 4%
CMY	0.7961, 0.9176, 0.9647
CMYK	0.00, 0.60, 0.83, 0.80
HSL	17°, 70%, 12%
HSV	17°, 83%, 20%
XYZ	1.7336, 1.2861, 0.4153
YIQ	28.9010, 22.3280, 2.8400

# Conversions

## Conversions Part 2

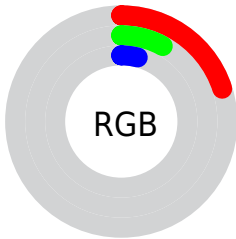
Format	Color
<a href="#">RYB</a>	<a href="#">52, 26, 9</a>
Decimal	<a href="#">3413257</a>
CIELab	<a href="#">11.18, 14.47, 13.33</a>
CIELCh	<a href="#">11, 19.675, 42.656</a>
Yxy	<a href="#">1.2861, 0.5047, 0.3744</a>
Android (android.graphics.Color)	<a href="#">4281603337 (0xFF341509)</a>
YUV	<a href="#">28.9010, -9.8112, 20.2578</a>
Hunter-Lab	<a href="#">11.3407, 7.4409, 5.7672</a>

# Details

The Android color **4281603337** is a dark color, and the websafe version is hex **330000**. A complement of this color would be **4278790196**, and the grayscale version is **4280098077**.

A 20% lighter version of the original color is **4284825653**, and **4278190080** is the 20% darker color. If you saturate the color by 10%, you get **4281602308**, and if you desaturate by 10%, it is **4281604366**.

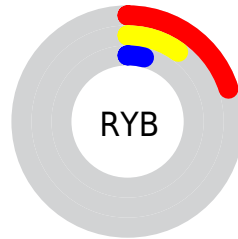
# Distribution



Red (20%)

Green (8%)

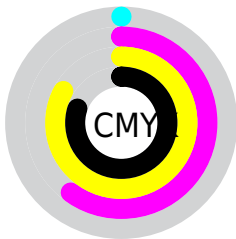
Blue (4%)



Red (20%)

Yellow (10%)

Blue (4%)

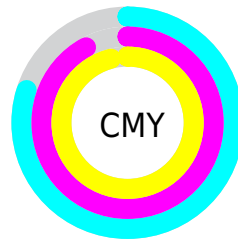


Cyan (0%)

Magenta (60%)

Yellow (83%)

Black (80%)



Cyan (80%)

Magenta (92%)

Yellow (96%)

# Brightness & Saturation Gradients

These gradients show how the Android color 4281603337 changes by changing the brightness by 10 percent. The first figure shows a shift by +10% for each color and the second figure -10%.

Similar to the brightness gradients but the following saturation gradients show a change of the Android color 4281603337 by changing the saturation by 10% instead.





4281603337



4281603337



4294965481



4280221696



4284825653



4278190080



4286535756



4288311396



4290087549



4291929239



4293836977



4294958029



4281603337



4281603337

■ 4281602308

■ 4281604366

■ 4281601792

■ 4281605139

■ 4281606169

■ 4281607198

■ 4281608227

■ 4281609000

■ 4281610029

■ 4281611059

■ 4281612088

# Harmonies

## Analogous

The Analogous color harmony consists of three colors that are next to each other on the color wheel.



4281733657



4281603337



4281145856

# Triad

The Triadic color harmony groups three colors that are evenly spaced from another and form a triangle on the color wheel.



4281603337



4278199317



4279180600

# Complementary

The Complementary color scheme is a pair of colors which are on the opposite of each other on the color wheel.



4281603337



4278790196

# Split Complementary

Split-complementary colors differ from the complementary color scheme. The scheme consists of three colors, the original color and two neighbors of the complement color.



4278198583



4281603337



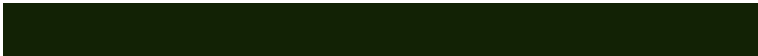
4278199331

# Square

The Square scheme is like the rectangle color scheme, but the four colors are evenly spaced on the color wheel.



4281603337



4279378437



4278199344



4280686642

# Rectangle

The Rectangle color scheme consists of four colors that form a rectangle on the color wheel.



4281603337



4280622336



4278199344



4278394681



# Sweetspot

The Sweet Spot groups the original color and five complimentary colors.



4281603337



4282726452



4281600297



4280556569



4288914339



4280558628



# Same Dimension

The Same Dimension uses a secret algorithm to generate beautiful new colors.



4281603337



4282717185



4281608713



4279900183



4284029184



4292426752



# Inverse Universe

The Inverse Universe completely reimagines the original color for something new.



4278790196



4278268485



4278784820



4279703834



4278206553

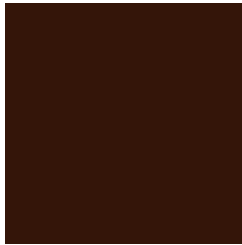


4278230233



# Previews

## White Background



This preview shows how the Android color 4281603337 looks on a white background.

## Color Contrast Check

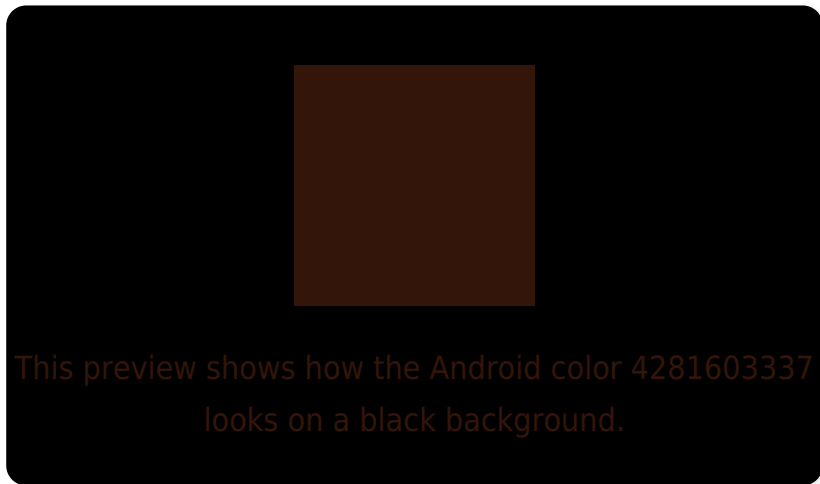
Large Text (above 18pt) WCAG AA ✓ Pass

Any Text WCAG AA ✓ Pass

Large Text (above 18pt) WCAG AAA ✓ Pass

Any Text WCAG AAA ✓ Pass

# Black Background



## Color Contrast Check

Large Text (above 18pt) WCAG AA × Fail

Any Text WCAG AA × Fail

Large Text (above 18pt) WCAG AAA × Fail

Any Text WCAG AAA × Fail

If you want to check with other color combinations, try the [Color Contrast Checker](#).



# Android 4281603337 Background



This preview shows how black text looks on a background with the Android color 4281603337.

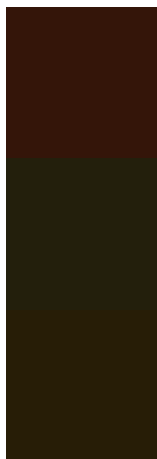


This preview shows how white text looks on a background with the Android color 4281603337.

# Color Blindness Simulation

Color vision deficiency is a very complex topic, and I could not describe the different causes any better than Wikipedia does, so if you want to learn more, you should check out their [article about color blindness](#).

## Dichromacy



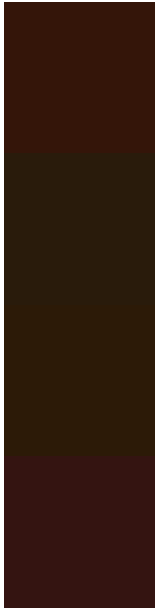
**Original Color**  
4281603337

**Protanopia**  
4280491788

**Deuteranopia**  
4280753414



# Trichromacy



**Original Color**

4281603337

**Protanomaly**

4280883979

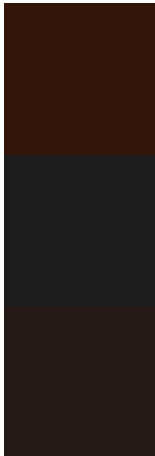
**Deuteranomaly**

4281080327

**Tritanomaly**

4281603089

# Monochromacy



**Original Color**

4281603337

**Achromatopsia**

4280098077

**Achromatomaly**

4280621590

# CSS Examples

## Text

The CSS property to change the color of the text to Android 4281603337 is called "color". The color property can be set on classes, ids or directly on the HTML element.

This example shows how text in the color `rgb(52, 21, 9)` looks like.

```
.text, #text, p{  
    color:rgb(52, 21, 9)  
}
```

If you want to add a text shadow in that color use the text-shadow property, you can generate a text shadow directly with our [CSS Text Shadow Generator](#).

Here you see how black text with a 4 pixel rgb(52, 21, 9) colored shadow looks like.

```
.shadow{ text-shadow: 4px 4px 2px rgb(52, 21, 9) }
```

## Border

The CSS property to change the border of an element to Android 4281603337 is called "border". The border property can be set on classes, ids or directly on the HTML element.

This example shows the color as border, it can be applied via the CSS property "border" or "border-color".

```
.border, #border, table{ border:4px solid rgb(52, 21, 9) }
```

If only the border color should be changed use the property `border-color`.

```
.border{ border-color:rgb(52, 21, 9) }
```

If you want to add a box shadow in that color use:

Here you see how a box with a 4 pixel `rgb(52, 21, 9)` colored shadow looks like.

```
.boxshadow{ -moz-box-shadow:4px 4px 4px  
4px rgb(52, 21, 9); -webkit-box-shadow:4px  
4px 4px 4px rgb(52, 21, 9); box-shadow:4px  
4px 4px 4px rgb(52, 21, 9) }
```

# Background

The CSS property to change the background color of an element to Android 4281603337 is called "background". The background property can be set on classes, ids or directly on the HTML element.

```
.background, #background, body{  
background: rgb(52, 21, 9) }
```

If only the background color should be changed can be used:

```
.background{ background-color: rgb(52, 21,  
9) }
```

This example shows the color as background, it is applied via the CSS property "background".

To optimize and compress your CSS code, you can use our [online CSS compressor and optimizer](#) based on csstidy. If you want to create a linear or radial gradient as background or border, check our [CSS Gradient Generator](#).



Hey! You found this booklet  
interesting? Support Converting  
Colors with the new Membership  
Option!

The pro membership hides all ads, plus gives you  
double the colors in the color bucket, and more  
awesome pro features!

**[Learn more, Memberships starting at \\$2.50/m!](#)**

**Follow me  
on Twitter!**

@ConvertingColor