

Converting Colors

Android(4281802269)

Have a look what the booklet for
Android(4281802269) contains.

Android(4281802269)	3
<i>Conversions</i>	4
<i>Details</i>	6
<i>Harmonies</i>	11
<i>Previews</i>	23
<i>Color Blindness Simulation</i>	26
<i>CSS Examples</i>	29

Color

Android(4281802269)

Conversions

Conversions Part 1

Format	Color
Hex	371E1D
RGB	55, 30, 29
RGB Percent	22%, 12%, 11%
CMY	0.7843, 0.8824, 0.8863
CMYK	0.00, 0.45, 0.47, 0.78
HSL	2°, 31%, 16%
HSV	2°, 47%, 22%
XYZ	2.2616, 1.8295, 1.3963
YIQ	37.3610, 15.2210, 4.9890

Conversions

Conversions Part 2

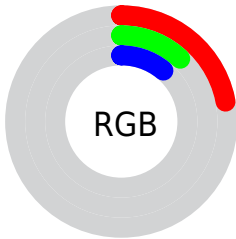
Format	Color
R_{YB}	55, 30, 29
Decimal	3612189
CIE _{Lab}	14.57, 12.06, 5.89
CIE _{LCh}	15, 13.423, 26.008
Yxy	1.8295, 0.4121, 0.3334
Android (android.graphics.Color)	4281802269 (0xFF371E1D)
YUV	37.3610, -4.1220, 15.4694
Hunter-Lab	13.5258, 6.1760, 3.3473

Details

The Android color **4281802269** is a dark color, and the websafe version is hex **333333**. A complement of this color would be **4280104503**, and the grayscale version is **4280624421**.

A 20% lighter version of the original color is **4284959304**, and **4278190080** is the 20% darker color. If you saturate the color by 10%, you get **4281800984**, and if you desaturate by 10%, it is **4281803555**.

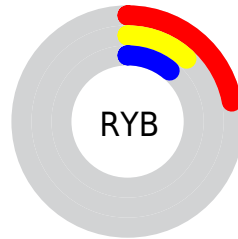
Distribution



Red (22%)

Green (12%)

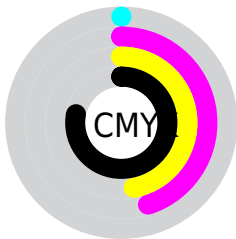
Blue (11%)



Red (22%)

Yellow (12%)

Blue (11%)

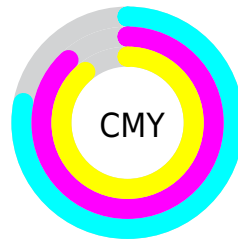


Cyan (0%)

Magenta (45%)

Yellow (47%)

Black (78%)



Cyan (78%)

Magenta (88%)

Yellow (89%)

Brightness & Saturation Gradients

These gradients show how the Android color 4281802269 changes by changing the brightness by 10 percent. The first figure shows a shift by +10% for each color and the second figure -10%.

Similar to the brightness gradients but the following saturation gradients show a change of the Android color 4281802269 by changing the saturation by 10% instead.



4281802269



4281802269

4294967295



4280485635



4284959304



4278190080



4286669408



4288379769



4290155923



4291997869



4293839816



4294961125



4281802269



4281802269

■ 4281800984

■ 4281803555

■ 4281799442

■ 4281805096

■ 4281798156

■ 4281806381

■ 4281796871

■ 4281807667

■ 4281795585

■ 4281808953

■ 4281795072

■ 4281810494

■ 4281811779

■ 4281813065

■ 4281814607

Harmonies

Analogous

The Analogous color harmony consists of three colors that are next to each other on the color wheel.



4281736742



4281802269



4281540885

Triad

The Triadic color harmony groups three colors that are evenly spaced from another and form a triangle on the color wheel.



4281802269



4279773466



4279576119

Complementary

The Complementary color scheme is a pair of colors which are on the opposite of each other on the color wheel.



4281802269



4280104503

Split Complementary

Split-complementary colors differ from the complementary color scheme. The scheme consists of three colors, the original color and two neighbors of the complement color.



4278528052



4281802269



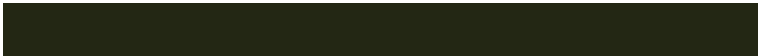
4278921763

Square

The Square scheme is like the rectangle color scheme, but the four colors are evenly spaced on the color wheel.



4281802269



4280493844



4278331949



4280558390

Rectangle

The Rectangle color scheme consists of four colors that form a rectangle on the color wheel.



4281802269



4281279250



4278331949



4279183159

Sweetspot

The Sweet Spot groups the original color and five complimentary colors.



4281802269



4282859069



4281802038



4280557086



4288914339



4280558628

Same Dimension

The Same Dimension uses a secret algorithm to generate beautiful new colors.



4281802269



4282851359



4281805597



4280031513



4284220416



4292544512

Inverse Universe

The Inverse Universe completely reimagines the original color for something new.



4280104503



4280239687



4280101175



4279835676



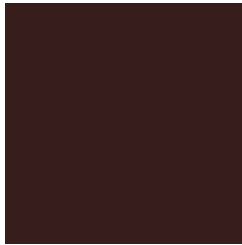
4278212700



4278244315

Previews

White Background



This preview shows how the Android color 4281802269 looks on a white background.

Color Contrast Check

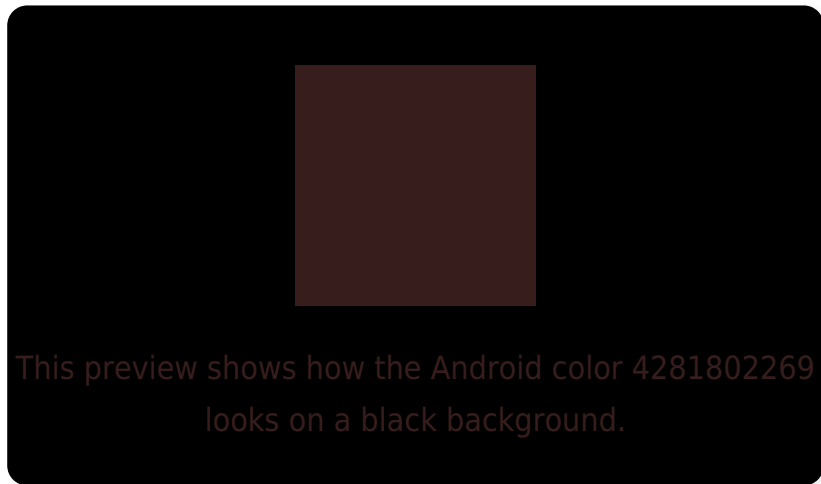
Large Text (above 18pt) WCAG AA ✓ Pass

Any Text WCAG AA ✓ Pass

Large Text (above 18pt) WCAG AAA ✓ Pass

Any Text WCAG AAA ✓ Pass

Black Background



Color Contrast Check

Large Text (above 18pt) WCAG AA × Fail

Any Text WCAG AA × Fail

Large Text (above 18pt) WCAG AAA × Fail

Any Text WCAG AAA × Fail

If you want to check with other color combinations, try the [Color Contrast Checker](#).

Android 4281802269 Background



This preview shows how black text looks on a background with the Android color 4281802269.

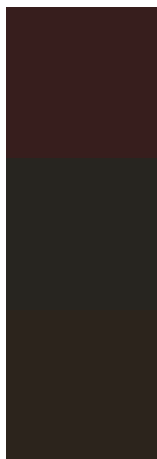


This preview shows how white text looks on a background with the Android color 4281802269.

Color Blindness Simulation

Color vision deficiency is a very complex topic, and I could not describe the different causes any better than Wikipedia does, so if you want to learn more, you should check out their [article about color blindness](#).

Dichromacy



Original Color

4281802269

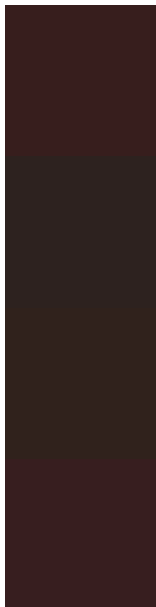
Protanopia

4280755488

Deuteranopia

4281082908

Trichromacy



Original Color

4281802269

Protanomaly

4281147935

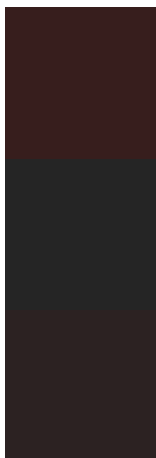
Deuteranomaly

4281344540

Tritanomaly

4281802271

Monochromacy



Original Color

4281802269

Achromatopsia

4280624421

Achromatomaly

4281082402

CSS Examples

Text

The CSS property to change the color of the text to Android 4281802269 is called "color". The color property can be set on classes, ids or directly on the HTML element.

This example shows how text in the color `rgb(55, 30, 29)` looks like.

```
.text, #text, p{  
    color:rgb(55, 30, 29)  
}
```

If you want to add a text shadow in that color use the text-shadow property, you can generate a text shadow directly with our [CSS Text Shadow Generator](#).

Here you see how black text with a 4 pixel rgb(55, 30, 29) colored shadow looks like.

```
.shadow{ text-shadow: 4px 4px 2px rgb(55, 30, 29) }
```

Border

The CSS property to change the border of an element to Android 4281802269 is called "border". The border property can be set on classes, ids or directly on the HTML element.

This example shows the color as border, it can be applied via the CSS property "border" or "border-color".

```
.border, #border, table{ border:4px solid rgb(55, 30, 29) }
```

If only the border color should be changed use the property border-color.

```
.border{ border-color:rgb(55, 30, 29) }
```

If you want to add a box shadow in that color use:

Here you see how a box with a 4 pixel rgb(55, 30, 29) colored shadow looks like.

```
.boxshadow{ -moz-box-shadow:4px 4px 4px  
4px rgb(55, 30, 29); -webkit-box-  
shadow:4px 4px 4px 4px rgb(55, 30, 29);  
box-shadow:4px 4px 4px 4px rgb(55, 30, 29)  
}
```

Background

The CSS property to change the background color of an element to Android 4281802269 is called "background". The background property can be set on classes, ids or directly on the HTML element.

```
.background, #background, body{  
background: rgb(55, 30, 29) }
```

If only the background color should be changed can be used:

```
.background{ background-color: rgb(55, 30,  
29) }
```

This example shows the color as background, it is applied via the CSS property "background".

To optimize and compress your CSS code, you can use our [online CSS compressor and optimizer](#) based on csstidy. If you want to create a linear or radial gradient as background or border, check our [CSS Gradient Generator](#).

Hey! You found this booklet interesting? Support Converting Colors with the new Membership Option!

The pro membership hides all ads, plus gives you double the colors in the color bucket, and more awesome pro features!

[Learn more, Memberships starting at \\$2.50/m!](#)

**Follow me
on Twitter!**

@ConvertingColor