

Converting Colors

Android(4281933850)

Have a look what the booklet for
Android(4281933850) contains.

| | |
|--|----|
| Android(4281933850) | 3 |
| <i>Conversions</i> | 4 |
| <i>Details</i> | 6 |
| <i>Harmonies</i> | 11 |
| <i>Previews</i> | 23 |
| <i>Color Blindness Simulation</i> | 26 |
| <i>CSS Examples</i> | 29 |

Color

Android(4281933850)

Conversions

Conversions Part 1

| Format | Color |
|-------------|--------------------------|
| Hex | 39201A |
| RGB | 57, 32, 26 |
| RGB Percent | 22%, 13%, 10% |
| CMY | 0.7765, 0.8745, 0.8980 |
| CMYK | 0.00, 0.44, 0.54, 0.78 |
| HSL | 12°, 37%, 16% |
| HSV | 12°, 54%, 22% |
| XYZ | 2.3903, 1.9775, 1.2330 |
| YIQ | 38.7910, 16.8260, 3.4340 |

Conversions

Conversions Part 2

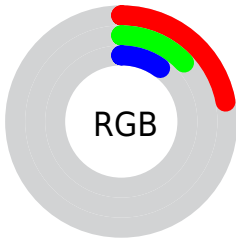
| Format | Color |
|-------------------------------------|------------------------------|
| RYB | 57, 33, 26 |
| Decimal | 3743770 |
| CIELab | 15.37, 11.28, 9.17 |
| CIElCh | 15, 14.539, 39.112 |
| Yxy | 1.9775, 0.4268, 0.3531 |
| Android (android.graphics.Color) | 4281933850 (0xFF39201A) |
| YUV | 38.7910, -6.3060, 15.9693 |
| Hunter-Lab | 14.0622, 5.7327, 4.6450 |

Details

The Android color **4281933850** is a dark color, and the websafe version is hex **333333**. A complement of this color would be **4279907129**, and the grayscale version is **4280756007**.

A 20% lighter version of the original color is **4285156421**, and **4278190080** is the 20% darker color. If you saturate the color by 10%, you get **4281932564**, and if you desaturate by 10%, it is **4281935136**.

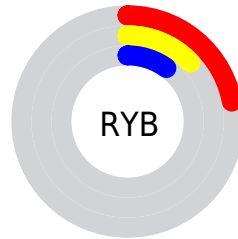
Distribution



Red (22%)

Green (13%)

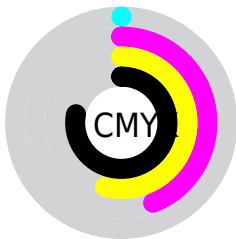
Blue (10%)



Red (22%)

Yellow (13%)

Blue (10%)

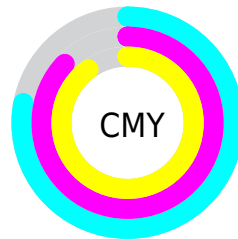


Cyan (0%)

Magenta (44%)

Yellow (54%)

Black (78%)



Cyan (78%)

Magenta (87%)

Yellow (90%)

Brightness & Saturation Gradients

These gradients show how the Android color 4281933850 changes by changing the brightness by 10 percent. The first figure shows a shift by +10% for each color and the second figure -10%.

Similar to the brightness gradients but the following saturation gradients show a change of the Android color 4281933850 by changing the saturation by 10% instead.



4281933850



4281933850

4294967293



4280551936



4285156421



4278190080



4286800989



4288576885



4290353039



4292194985



4294102725



4294961888



4281933850



4281933850

■ 4281932564

■ 4281935136

■ 4281931535

■ 4281936165

■ 4281930249

■ 4281937451

■ 4281929219

■ 4281938481

■ 4281928448

■ 4281939767

■ 4281941052

■ 4281942082

■ 4281943368

■ 4281944397

Harmonies

Analogous

The Analogous color harmony consists of three colors that are next to each other on the color wheel.



4281998884



4281933850



4281541395

Triad

The Triadic color harmony groups three colors that are evenly spaced from another and form a triangle on the color wheel.



4281933850



4279380767



4280034875

Complementary

The Complementary color scheme is a pair of colors which are on the opposite of each other on the color wheel.



4281933850



4279907129

Split Complementary

Split-complementary colors differ from the complementary color scheme. The scheme consists of three colors, the original color and two neighbors of the complement color.



4278790457



4281933850



4278397993

Square

The Square scheme is like the rectangle color scheme, but the four colors are evenly spaced on the color wheel.



4281933850



4280232470



4278201139



4281082678

Rectangle

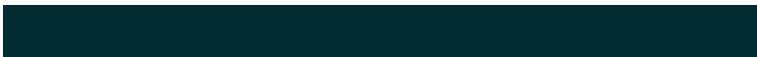
The Rectangle color scheme consists of four colors that form a rectangle on the color wheel.



4281933850



4281148946



4278201139



4279642171

Sweetspot

The Sweet Spot groups the original color and five complimentary colors.



4281933850



4283056190



4281932339



4280688671



4289111718



4280690214

Same Dimension

The Same Dimension uses a secret algorithm to generate beautiful new colors.



4281933850



4283048730



4281937690



4280031769



4284224000



4292553216

Inverse Universe

The Inverse Universe completely reimagines the original color for something new.



4279907129



4279910730



4279903289



4279835676



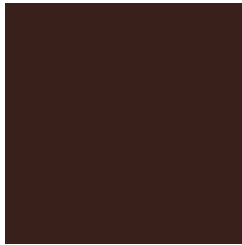
4278209116



4278235611

Previews

White Background



This preview shows how the Android color 4281933850 looks on a white background.

Color Contrast Check

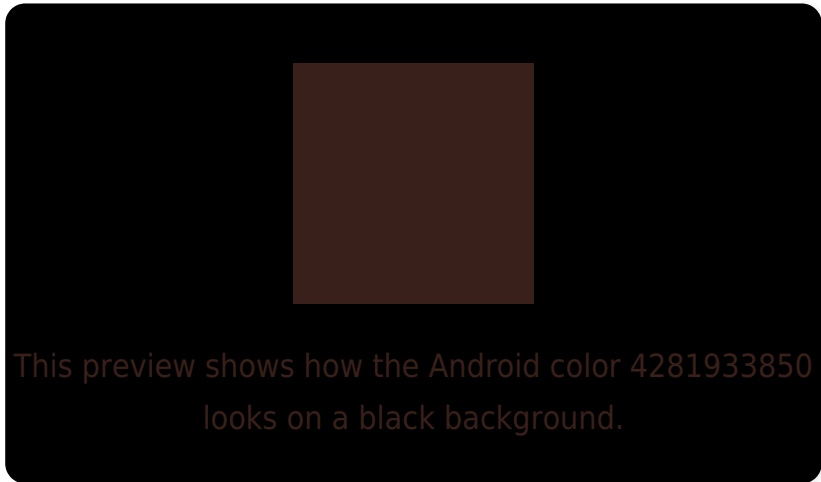
Large Text (above 18pt) WCAG AA ✓ Pass

Any Text WCAG AA ✓ Pass

Large Text (above 18pt) WCAG AAA ✓ Pass

Any Text WCAG AAA ✓ Pass

Black Background



Color Contrast Check

Large Text (above 18pt) WCAG AA × Fail

Any Text WCAG AA × Fail

Large Text (above 18pt) WCAG AAA × Fail

Any Text WCAG AAA × Fail

If you want to check with other color combinations, try the [Color Contrast Checker](#).

Android 4281933850 Background



This preview shows how black text looks on a background with the Android color 4281933850.



This preview shows how white text looks on a background with the Android color 4281933850.

Color Blindness Simulation

Color vision deficiency is a very complex topic, and I could not describe the different causes any better than Wikipedia does, so if you want to learn more, you should check out their [article about color blindness](#).

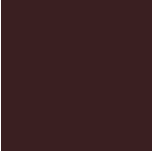
Dichromacy



Original Color
4281933850

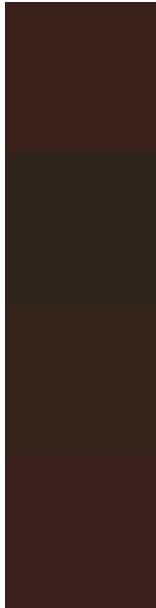
Protanopia
4280952605

Deuteranopia
4281279769



Tritanopia
4281999137

Trichromacy



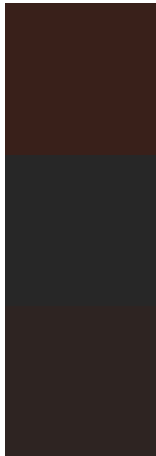
Original Color
4281933850

Protanomaly
4281279516

Deuteranomaly
4281541401

Tritanomaly
4281999134

Monochromacy



Original Color
4281933850

Achromatopsia
4280756007

Achromatomaly
4281213986

CSS Examples

Text

The CSS property to change the color of the text to Android 4281933850 is called "color". The color property can be set on classes, ids or directly on the HTML element.

This example shows how text in the color `rgb(57, 32, 26)` looks like.

```
.text, #text, p{  
    color:rgb(57, 32, 26)  
}
```

If you want to add a text shadow in that color use the text-shadow property, you can generate a text shadow directly with our [CSS Text Shadow Generator](#).

Here you see how black text with a 4 pixel rgb(57, 32, 26) colored shadow looks like.

```
.shadow{ text-shadow: 4px 4px 2px rgb(57, 32, 26) }
```

Border

The CSS property to change the border of an element to Android 4281933850 is called "border". The border property can be set on classes, ids or directly on the HTML element.

This example shows the color as border, it can be applied via the CSS property "border" or "border-color".

```
.border, #border, table{ border:4px solid rgb(57, 32, 26) }
```

If only the border color should be changed use the property `border-color`.

```
.border{ border-color:rgb(57, 32, 26) }
```

If you want to add a box shadow in that color use:

Here you see how a box with a 4 pixel `rgb(57, 32, 26)` colored shadow looks like.

```
.boxshadow{ -moz-box-shadow:4px 4px 4px  
4px rgb(57, 32, 26); -webkit-box-  
shadow:4px 4px 4px 4px rgb(57, 32, 26);  
box-shadow:4px 4px 4px 4px rgb(57, 32, 26)  
}
```

Background

The CSS property to change the background color of an element to Android 4281933850 is called "background". The background property can be set on classes, ids or directly on the HTML element.

```
.background, #background, body{  
background: rgb(57, 32, 26) }
```

If only the background color should be changed can be used:

```
.background{ background-color: rgb(57, 32,  
26) }
```

This example shows the color as background, it is applied via the CSS property "background".

To optimize and compress your CSS code, you can use our [online CSS compressor and optimizer](#) based on csstidy. If you want to create a linear or radial gradient as background or border, check our [CSS Gradient Generator](#).

Hey! You found this booklet interesting? Support Converting Colors with the new Membership Option!

The pro membership hides all ads, plus gives you double the colors in the color bucket, and more awesome pro features!

[Learn more, Memberships starting at \\$2.50/m!](#)

**Follow me
on Twitter!**

@ConvertingColor