

Converting Colors

Android(4282332200)

Have a look what the booklet for
Android(4282332200) contains.

Android(4282332200)	3
<i>Conversions</i>	4
<i>Details</i>	6
<i>Harmonies</i>	11
<i>Previews</i>	23
<i>Color Blindness Simulation</i>	26
<i>CSS Examples</i>	29

Color

Android(4282332200)

Conversions

Conversions Part 1

Format	Color
Hex	3F3428
RGB	63, 52, 40
RGB Percent	25%, 20%, 16%
CMY	0.7529, 0.7961, 0.8431
CMYK	0.00, 0.17, 0.37, 0.75
HSL	31°, 22%, 20%
HSV	31°, 37%, 25%
XYZ	3.6609, 3.6659, 2.5221
YIQ	53.9210, 10.4080, -1.4000

Conversions

Conversions Part 2

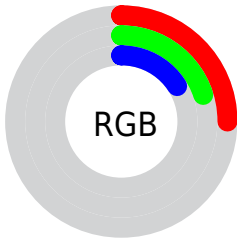
Format	Color
RYB	61, 63, 40
Decimal	4142120
CIELab	22.53, 2.76, 9.43
CIELCh	23, 9.823, 73.688
Yxy	3.6659, 0.3717, 0.3722
Android (android.graphics.Color)	4282332200 (0xFF3F3428)
YUV	53.9210, -6.8631, 7.9623
Hunter-Lab	19.1467, 0.6230, 5.5926

Details

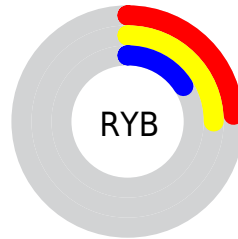
The Android color **4282332200** is a dark color, and the websafe version is hex **333333**. A complement of this color would be **4280824639**, and the grayscale version is **4281742902**.

A 20% lighter version of the original color is **4285489749**, and **4279437056** is the 20% darker color. If you saturate the color by 10%, you get **4282331426**, and if you desaturate by 10%, it is **4282332974**.

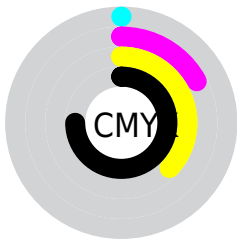
Distribution



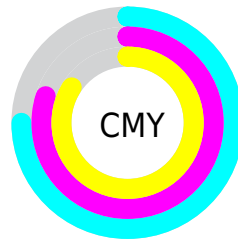
- Red (25%)
- Green (20%)
- Blue (16%)



- Red (24%)
- Yellow (25%)
- Blue (16%)



- Cyan (0%)
- Magenta (17%)
- Yellow (37%)
- Black (75%)



- Cyan (75%)
- Magenta (80%)
- Yellow (84%)

Brightness & Saturation Gradients

These gradients show how the Android color 4282332200 changes by changing the brightness by 10 percent. The first figure shows a shift by +10% for each color and the second figure -10%.

Similar to the brightness gradients but the following saturation gradients show a change of the Android color 4282332200 by changing the saturation by 10% instead.



4282332200



4282332200

4294967295



4280885012



4285489749



4279437056



4287200109



4278190080



4288910727



4290687137



4292529084



4294436824



4294967284



4282332200



4282332200

■ 4282331426

■ 4282332974

■ 4282330651

■ 4282333749

■ 4282329877

■ 4282334523

■ 4282329103

■ 4282335297

■ 4282328328

■ 4282336072

■ 4282327554

■ 4282336846

■ 4282327296

■ 4282337620

■ 4282338394

■ 4282339169

Harmonies

Analogous

The Analogous color harmony consists of three colors that are next to each other on the color wheel.



4282659372



4282332200



4281873960

Triad

The Triadic color harmony groups three colors that are evenly spaced from another and form a triangle on the color wheel.



4282332200



4280433209



4282069824

Complementary

The Complementary color scheme is a pair of colors which are on the opposite of each other on the color wheel.



4282332200



4280824639

Split Complementary

Split-complementary colors differ from the complementary color scheme. The scheme consists of three colors, the original color and two neighbors of the complement color.



4281480516



4282332200



4280432960

Square

The Square scheme is like the rectangle color scheme, but the four colors are evenly spaced on the color wheel.



4282332200



4280826417



4280825924



4282528058

Rectangle

The Rectangle color scheme consists of four colors that form a rectangle on the color wheel.



4282332200



4281481258



4280825924



4281873474

Sweetspot

The Sweet Spot groups the original color and five complimentary colors.



4282332200



4283583817



4282329139



4280886819



4289243304



4280887593

Same Dimension

The Same Dimension uses a secret algorithm to generate beautiful new colors.



4282332200



4283580462



4282335016



4280229148



4284363008



4292768768

Inverse Universe

The Inverse Universe completely reimagines the original color for something new.



4280824639



4281220946



4280821823



4280032543



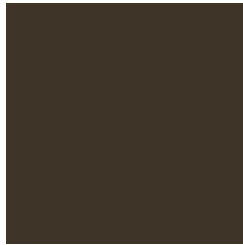
4278201694



4278217438

Previews

White Background



This preview shows how the Android color 4282332200 looks on a white background.

Color Contrast Check

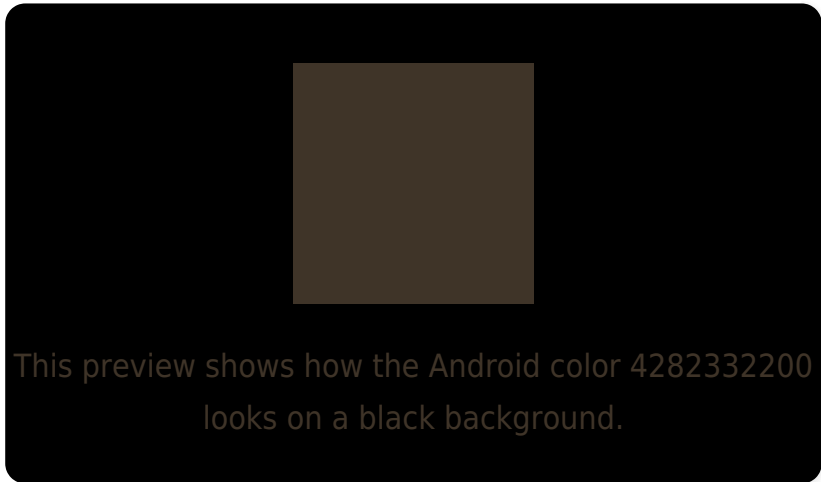
Large Text (above 18pt) WCAG AA ✓ Pass

Any Text WCAG AA ✓ Pass

Large Text (above 18pt) WCAG AAA ✓ Pass

Any Text WCAG AAA ✓ Pass

Black Background



Color Contrast Check

Large Text (above 18pt) WCAG AA × Fail

Any Text WCAG AA × Fail

Large Text (above 18pt) WCAG AAA × Fail

Any Text WCAG AAA × Fail

If you want to check with other color combinations, try the [Color Contrast Checker](#).

Android 4282332200 Background



This preview shows how black text looks on a background with the Android color 4282332200.

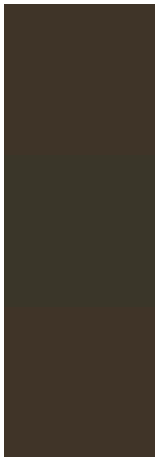


This preview shows how white text looks on a background with the Android color 4282332200.

Color Blindness Simulation

Color vision deficiency is a very complex topic, and I could not describe the different causes any better than Wikipedia does, so if you want to learn more, you should check out their [article about color blindness](#).

Dichromacy

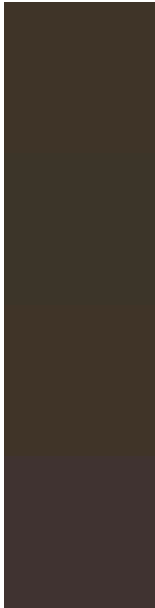


Original Color
4282332200

Protanopia
4282005033

Deuteranopia
4282397736

Trichromacy



Original Color

4282332200

Protanomaly

4282135849

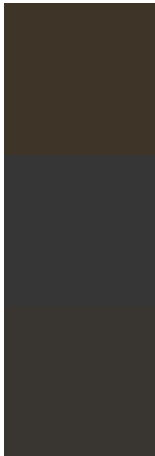
Deuteranomaly

4282397736

Tritanomaly

4282397489

Monochromacy



Original Color

4282332200

Achromatopsia

4281742902

Achromatomaly

4281939249

CSS Examples

Text

The CSS property to change the color of the text to Android 4282332200 is called "color". The color property can be set on classes, ids or directly on the HTML element.

This example shows how text in the color `rgb(63, 52, 40)` looks like.

```
.text, #text, p{  
    color:rgb(63, 52, 40)  
}
```

If you want to add a text shadow in that color use the text-shadow property, you can generate a text shadow directly with our [CSS Text Shadow Generator](#).

Here you see how black text with a 4 pixel rgb(63, 52, 40) colored shadow looks like.

```
.shadow{ text-shadow: 4px 4px 2px rgb(63, 52, 40) }
```

Border

The CSS property to change the border of an element to Android 4282332200 is called "border". The border property can be set on classes, ids or directly on the HTML element.

This example shows the color as border, it can be applied via the CSS property "border" or "border-color".

```
.border, #border, table{ border:4px solid rgb(63, 52, 40) }
```

If only the border color should be changed use the property `border-color`.

```
.border{ border-color:rgb(63, 52, 40) }
```

If you want to add a box shadow in that color use:

Here you see how a box with a 4 pixel `rgb(63, 52, 40)` colored shadow looks like.

```
.boxshadow{ -moz-box-shadow:4px 4px 4px  
4px rgb(63, 52, 40); -webkit-box-  
shadow:4px 4px 4px 4px rgb(63, 52, 40);  
box-shadow:4px 4px 4px 4px rgb(63, 52, 40)  
}
```

Background

The CSS property to change the background color of an element to Android 4282332200 is called "background". The background property can be set on classes, ids or directly on the HTML element.

```
.background, #background, body{  
background: rgb(63, 52, 40) }
```

If only the background color should be changed can be used:

```
.background{ background-color: rgb(63, 52,  
40) }
```

This example shows the color as background, it is applied via the CSS property "background".

To optimize and compress your CSS code, you can use our [online CSS compressor and optimizer](#) based on csstidy. If you want to create a linear or radial gradient as background or border, check our [CSS Gradient Generator](#).

Hey! You found this booklet interesting? Support Converting Colors with the new Membership Option!

The pro membership hides all ads, plus gives you double the colors in the color bucket, and more awesome pro features!

[Learn more, Memberships starting at \\$2.50/m!](#)

**Follow me
on Twitter!**

@ConvertingColor