

Converting Colors

Android(4282396710)

Have a look what the booklet for
Android(4282396710) contains.

Android(4282396710)	3
<i>Conversions</i>	4
<i>Details</i>	6
<i>Harmonies</i>	11
<i>Previews</i>	23
<i>Color Blindness Simulation</i>	26
<i>CSS Examples</i>	29

Color

Android(4282396710)

Conversions

Conversions Part 1

Format	Color
Hex	403026
RGB	64, 48, 38
RGB Percent	25%, 19%, 15%
CMY	0.7490, 0.8118, 0.8510
CMYK	0.00, 0.25, 0.41, 0.75
HSL	23°, 25%, 20%
HSV	23°, 41%, 25%
XYZ	3.5212, 3.3438, 2.2936
YIQ	51.6440, 12.7460, 0.2820

Conversions

Conversions Part 2

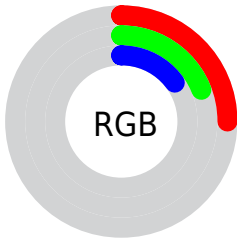
Format	Color
RYB	64, 54, 38
Decimal	4206630
CIELab	21.37, 5.60, 9.20
CIElCh	21, 10.768, 58.680
Yxy	3.3438, 0.3845, 0.3651
Android (android.graphics.Color)	4282396710 (0xFF403026)
YUV	51.6440, -6.7265, 10.8362
Hunter-Lab	18.2862, 2.3709, 5.3638

Details

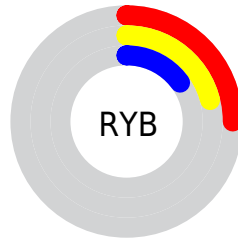
The Android color **4282396710** is a dark color, and the websafe version is hex **333333**. A complement of this color would be **4280694336**, and the grayscale version is **4281611316**.

A 20% lighter version of the original color is **4285554259**, and **4279500800** is the 20% darker color. If you saturate the color by 10%, you get **4282395680**, and if you desaturate by 10%, it is **4282397740**.

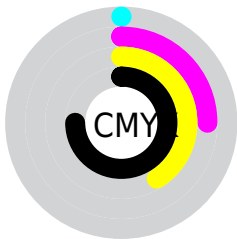
Distribution



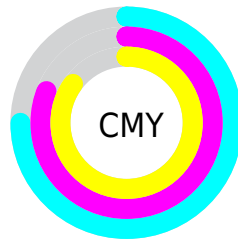
- Red (25%)
- Green (19%)
- Blue (15%)



- Red (25%)
- Yellow (21%)
- Blue (15%)



- Cyan (0%)
- Magenta (25%)
- Yellow (41%)
- Black (75%)



- Cyan (75%)
- Magenta (81%)
- Yellow (85%)

Brightness & Saturation Gradients

These gradients show how the Android color 4282396710 changes by changing the brightness by 10 percent. The first figure shows a shift by +10% for each color and the second figure -10%.

Similar to the brightness gradients but the following saturation gradients show a change of the Android color 4282396710 by changing the saturation by 10% instead.



4282396710



4282396710

4294967295



4280949521



4285554259



4279500800



4287264619



4278190080



4289040516



4290816926



4292658873



4294566613



4294967281



4282396710



4282396710

■ 4282395680

■ 4282397740

■ 4282394649

■ 4282398771

■ 4282393619

■ 4282399801

■ 4282392588

■ 4282400832

■ 4282391558

■ 4282401862

■ 4282390784

■ 4282402892

■ 4282403923

■ 4282404953

■ 4282405728

Harmonies

Analogous

The Analogous color harmony consists of three colors that are next to each other on the color wheel.



4282592812



4282396710



4281938723

Triad

The Triadic color harmony groups three colors that are evenly spaced from another and form a triangle on the color wheel.



4282396710



4280301619



4281610561

Complementary

The Complementary color scheme is a pair of colors which are on the opposite of each other on the color wheel.



4282396710



4280694336

Split Complementary

Split-complementary colors differ from the complementary color scheme. The scheme consists of three colors, the original color and two neighbors of the complement color.



4280890435



4282396710



4280039483

Square

The Square scheme is like the rectangle color scheme, but the four colors are evenly spaced on the color wheel.



4282396710



4280825643



4280301121



4282199868

Rectangle

The Rectangle color scheme consists of four colors that form a rectangle on the color wheel.



4282396710



4281611300



4280301121



4281414210

Sweetspot

The Sweet Spot groups the original color and five complimentary colors.



4282396710



4283715146



4282394166



4281018405



4289440683



4281019179

Same Dimension

The Same Dimension uses a secret algorithm to generate beautiful new colors.



4282396710



4283710251



4282400038



4280360734



4284556544



4292892160

Inverse Universe

The Inverse Universe completely reimagines the original color for something new.



4280694336



4281025620



4280691008



4280164385



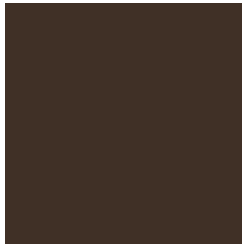
4278205537



4278225632

Previews

White Background



This preview shows how the Android color 4282396710 looks on a white background.

Color Contrast Check

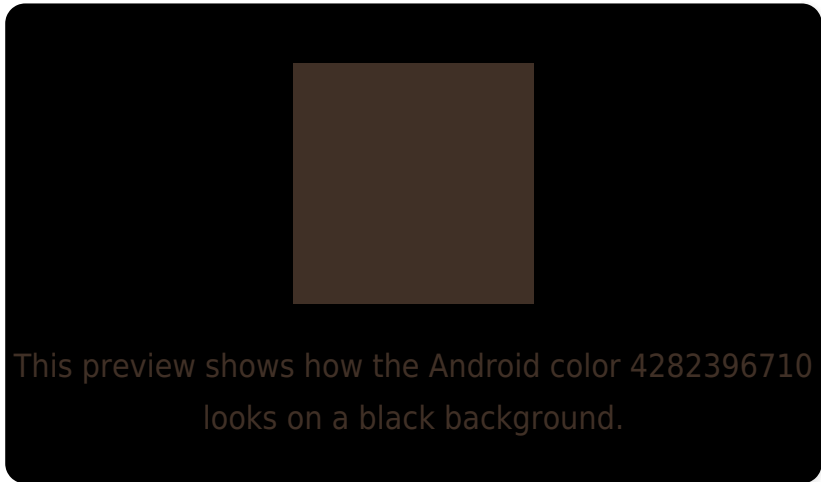
Large Text (above 18pt) WCAG AA ✓ Pass

Any Text WCAG AA ✓ Pass

Large Text (above 18pt) WCAG AAA ✓ Pass

Any Text WCAG AAA ✓ Pass

Black Background



Color Contrast Check

Large Text (above 18pt) WCAG AA × Fail

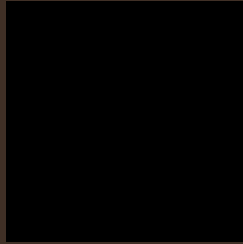
Any Text WCAG AA × Fail

Large Text (above 18pt) WCAG AAA × Fail

Any Text WCAG AAA × Fail

If you want to check with other color combinations, try the [Color Contrast Checker](#).

Android 4282396710 Background



This preview shows how black text looks on a background with the Android color 4282396710.

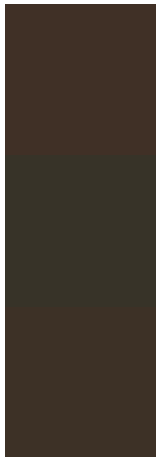


This preview shows how white text looks on a background with the Android color 4282396710.

Color Blindness Simulation

Color vision deficiency is a very complex topic, and I could not describe the different causes any better than Wikipedia does, so if you want to learn more, you should check out their [article about color blindness](#).

Dichromacy

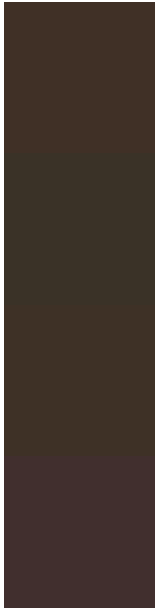


Original Color
4282396710

Protanopia
4281807656

Deuteranopia
4282200358

Trichromacy



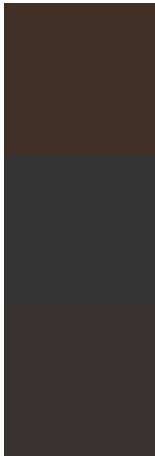
Original Color
4282396710

Protanomaly
4282004007

Deuteranomaly
4282265894

Tritanomaly
4282461998

Monochromacy



Original Color
4282396710

Achromatopsia
4281611316

Achromatomaly
4281873199

CSS Examples

Text

The CSS property to change the color of the text to Android 4282396710 is called "color". The color property can be set on classes, ids or directly on the HTML element.

This example shows how text in the color `rgb(64, 48, 38)` looks like.

```
.text, #text, p{  
    color:rgb(64, 48, 38)  
}
```

If you want to add a text shadow in that color use the text-shadow property, you can generate a text shadow directly with our [CSS Text Shadow Generator](#).

Here you see how black text with a 4 pixel rgb(64, 48, 38) colored shadow looks like.

```
.shadow{ text-shadow: 4px 4px 2px rgb(64, 48, 38) }
```

Border

The CSS property to change the border of an element to Android 4282396710 is called "border". The border property can be set on classes, ids or directly on the HTML element.

This example shows the color as border, it can be applied via the CSS property "border" or "border-color".

```
.border, #border, table{ border:4px solid rgb(64, 48, 38) }
```

If only the border color should be changed use the property border-color.

```
.border{ border-color:rgb(64, 48, 38) }
```

If you want to add a box shadow in that color use:

Here you see how a box with a 4 pixel rgb(64, 48, 38) colored shadow looks like.

```
.boxshadow{ -moz-box-shadow:4px 4px 4px  
4px rgb(64, 48, 38); -webkit-box-  
shadow:4px 4px 4px 4px rgb(64, 48, 38);  
box-shadow:4px 4px 4px 4px rgb(64, 48, 38)  
}
```

Background

The CSS property to change the background color of an element to Android 4282396710 is called "background". The background property can be set on classes, ids or directly on the HTML element.

```
.background, #background, body{  
background: rgb(64, 48, 38) }
```

If only the background color should be changed can be used:

```
.background{ background-color: rgb(64, 48,  
38) }
```

This example shows the color as background, it is applied via the CSS property "background".

To optimize and compress your CSS code, you can use our [online CSS compressor and optimizer](#) based on csstidy. If you want to create a linear or radial gradient as background or border, check our [CSS Gradient Generator](#).

Hey! You found this booklet interesting? Support Converting Colors with the new Membership Option!

The pro membership hides all ads, plus gives you double the colors in the color bucket, and more awesome pro features!

[Learn more, Memberships starting at \\$2.50/m!](#)

**Follow me
on Twitter!**

@ConvertingColor