

Converting Colors

Android(4282398502)

Have a look what the booklet for
Android(4282398502) contains.

Android(4282398502)	3
<i>Conversions</i>	4
<i>Details</i>	6
<i>Harmonies</i>	11
<i>Previews</i>	23
<i>Color Blindness Simulation</i>	26
<i>CSS Examples</i>	29

Color

Android(4282398502)

Conversions

Conversions Part 1

Format	Color
Hex	403726
RGB	64, 55, 38
RGB Percent	25%, 22%, 15%
CMY	0.7490, 0.7843, 0.8510
CMYK	0.00, 0.14, 0.41, 0.75
HSL	39°, 25%, 20%
HSV	39°, 41%, 25%
XYZ	3.8304, 3.9623, 2.3966
YIQ	55.7530, 10.8210, -3.3790

Conversions

Conversions Part 2

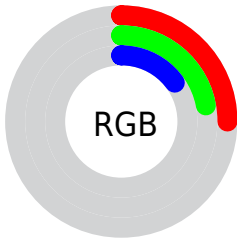
Format	Color
RYB	52, 64, 38
Decimal	4208422
CIELab	23.55, 0.97, 12.13
CIELCh	24, 12.172, 85.452
Yxy	3.9623, 0.3759, 0.3889
Android (android.graphics.Color)	4282398502 (0xFF403726)
YUV	55.7530, -8.7522, 7.2326
Hunter-Lab	19.9055, -0.4862, 6.7953

Details

The Android color **4282398502** is a dark color, and the websafe version is hex **333333**. A complement of this color would be **4280692544**, and the grayscale version is **4281874488**.

A 20% lighter version of the original color is **4285556307**, and **4279503872** is the 20% darker color. If you saturate the color by 10%, you get **4282397984**, and if you desaturate by 10%, it is **4282399020**.

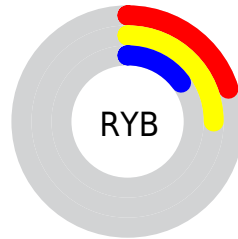
Distribution



Red (25%)

Green (22%)

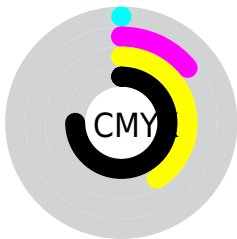
Blue (15%)



Red (20%)

Yellow (25%)

Blue (15%)

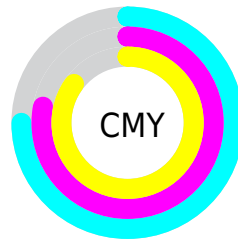


Cyan (0%)

Magenta (14%)

Yellow (41%)

Black (75%)



Cyan (75%)

Magenta (78%)

Yellow (85%)

Brightness & Saturation Gradients

These gradients show how the Android color 4282398502 changes by changing the brightness by 10 percent. The first figure shows a shift by +10% for each color and the second figure -10%.

Similar to the brightness gradients but the following saturation gradients show a change of the Android color 4282398502 by changing the saturation by 10% instead.



4282398502



4282398502

4294967295



4280951313



4285556307



4279503872



4287266667



4278190080



4288977284



4290818975



4292661178



4294503381



4294967282



4282398502



4282398502

■ 4282397984

■ 4282399020

■ 4282397465

■ 4282399539

■ 4282396691

■ 4282400313

■ 4282396172

■ 4282400832

■ 4282395654

■ 4282401350

■ 4282395136

■ 4282401868

■ 4282402643

■ 4282403161

■ 4282403680

Harmonies

Analogous

The Analogous color harmony consists of three colors that are next to each other on the color wheel.



4282856489



4282398502



4281809447

Triad

The Triadic color harmony groups three colors that are evenly spaced from another and form a triangle on the color wheel.



4282398502



4280106304



4282528579

Complementary

The Complementary color scheme is a pair of colors which are on the opposite of each other on the color wheel.



4282398502



4280692544

Split Complementary

Split-complementary colors differ from the complementary color scheme. The scheme consists of three colors, the original color and two neighbors of the complement color.



4281873992



4282398502



4280302663

Square

The Square scheme is like the rectangle color scheme, but the four colors are evenly spaced on the color wheel.



4282398502



4280433974



4281022794



4282987066

Rectangle

The Rectangle color scheme consists of four colors that form a rectangle on the color wheel.



4282398502



4281350955



4281022794



4282332229

Sweetspot

The Sweet Spot groups the original color and five complimentary colors.



4282398502



4283715914



4282394159



4281018661



4289440683



4281019179

Same Dimension

The Same Dimension uses a secret algorithm to generate beautiful new colors.



4282398502



4283713067



4282138662



4280360990



4284563200



4292907776

Inverse Universe

The Inverse Universe completely reimagines the original color for something new.



4280692544



4281022804



4280952384



4280164129



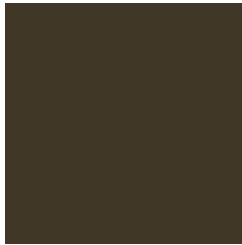
4278198881



4278210272

Previews

White Background



This preview shows how the Android color 4282398502 looks on a white background.

Color Contrast Check

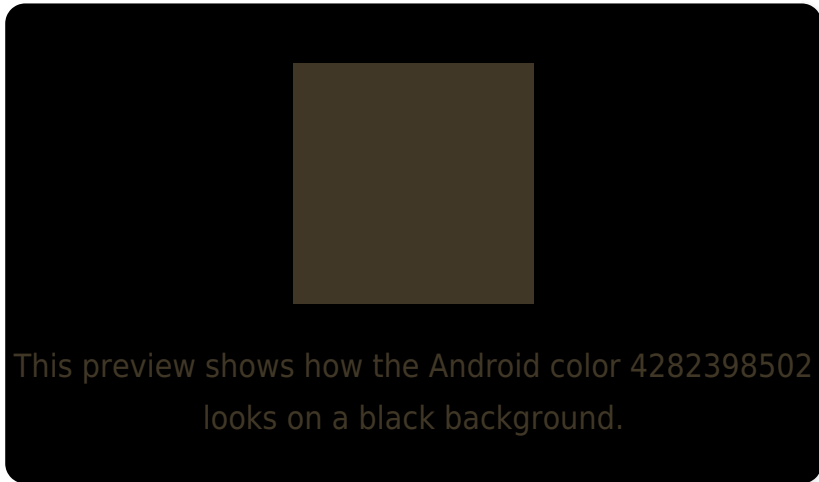
Large Text (above 18pt) WCAG AA ✓ Pass

Any Text WCAG AA ✓ Pass

Large Text (above 18pt) WCAG AAA ✓ Pass

Any Text WCAG AAA ✓ Pass

Black Background



Color Contrast Check

Large Text (above 18pt) WCAG AA × Fail

Any Text WCAG AA × Fail

Large Text (above 18pt) WCAG AAA × Fail

Any Text WCAG AAA × Fail

If you want to check with other color combinations, try the [Color Contrast Checker](#).

Android 4282398502 Background



This preview shows how black text looks on a background with the Android color 4282398502.

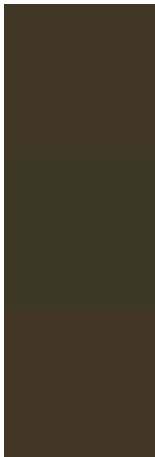


This preview shows how white text looks on a background with the Android color 4282398502.

Color Blindness Simulation

Color vision deficiency is a very complex topic, and I could not describe the different causes any better than Wikipedia does, so if you want to learn more, you should check out their [article about color blindness](#).

Dichromacy

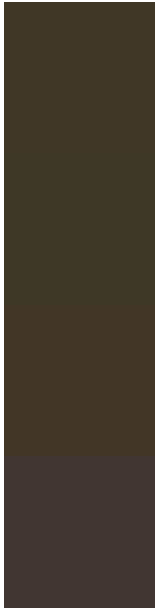


Original Color
4282398502

Protanopia
4282202150

Deuteranopia
4282594854

Trichromacy



Original Color

4282398502

Protanomaly

4282267686

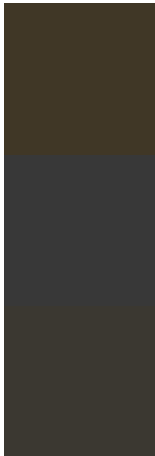
Deuteranomaly

4282529318

Tritanomaly

4282463794

Monochromacy



Original Color

4282398502

Achromatopsia

4281874488

Achromatomaly

4282071089

CSS Examples

Text

The CSS property to change the color of the text to Android 4282398502 is called "color". The color property can be set on classes, ids or directly on the HTML element.

This example shows how text in the color `rgb(64, 55, 38)` looks like.

```
.text, #text, p{  
    color:rgb(64, 55, 38)  
}
```

If you want to add a text shadow in that color use the text-shadow property, you can generate a text shadow directly with our [CSS Text Shadow Generator](#).

Here you see how black text with a 4 pixel rgb(64, 55, 38) colored shadow looks like.

```
.shadow{ text-shadow: 4px 4px 2px rgb(64, 55, 38) }
```

Border

The CSS property to change the border of an element to Android 4282398502 is called "border". The border property can be set on classes, ids or directly on the HTML element.

This example shows the color as border, it can be applied via the CSS property "border" or "border-color".

```
.border, #border, table{ border:4px solid rgb(64, 55, 38) }
```

If only the border color should be changed use the property `border-color`.

```
.border{ border-color:rgb(64, 55, 38) }
```

If you want to add a box shadow in that color use:

Here you see how a box with a 4 pixel `rgb(64, 55, 38)` colored shadow looks like.

```
.boxshadow{ -moz-box-shadow:4px 4px 4px  
4px rgb(64, 55, 38); -webkit-box-  
shadow:4px 4px 4px 4px rgb(64, 55, 38);  
box-shadow:4px 4px 4px 4px rgb(64, 55, 38)  
}
```

Background

The CSS property to change the background color of an element to Android 4282398502 is called "background". The background property can be set on classes, ids or directly on the HTML element.

```
.background, #background, body{  
background: rgb(64, 55, 38) }
```

If only the background color should be changed can be used:

```
.background{ background-color: rgb(64, 55,  
38) }
```

This example shows the color as background, it is applied via the CSS property "background".

To optimize and compress your CSS code, you can use our [online CSS compressor and optimizer](#) based on csstidy. If you want to create a linear or radial gradient as background or border, check our [CSS Gradient Generator](#).

Hey! You found this booklet interesting? Support Converting Colors with the new Membership Option!

The pro membership hides all ads, plus gives you double the colors in the color bucket, and more awesome pro features!

[Learn more, Memberships starting at \\$2.50/m!](#)

**Follow me
on Twitter!**

@ConvertingColor