

# Converting Colors

Android(4282458907)

Have a look what the booklet for  
Android(4282458907) contains.

<b>Android(4282458907)</b> .....	3
<b><i>Conversions</i></b> .....	4
<b><i>Details</i></b> .....	6
<b><i>Harmonies</i></b> .....	11
<b><i>Previews</i></b> .....	23
<b><i>Color Blindness Simulation</i></b> .....	26
<b><i>CSS Examples</i></b> .....	29

# Color

**Android(4282458907)**

# Conversions

## Conversions Part 1

Format	Color
Hex	41231B
RGB	65, 35, 27
RGB Percent	25%, 14%, 11%
CMY	0.7451, 0.8627, 0.8941
CMYK	0.00, 0.46, 0.58, 0.75
HSL	13°, 41%, 18%
HSV	13°, 58%, 25%
XYZ	2.9788, 2.4050, 1.3441
YIQ	43.0580, 20.4480, 3.8720

# Conversions

## Conversions Part 2

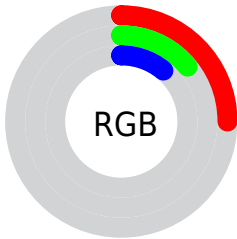
Format	Color
<a href="#">RYB</a>	<a href="#">65, 37, 27</a>
Decimal	<a href="#">4268827</a>
CIELab	<a href="#">17.48, 13.32, 11.51</a>
CIElCh	<a href="#">17, 17.600, 40.831</a>
Yxy	<a href="#">2.4050, 0.4428, 0.3575</a>
Android (android.graphics.Color)	<a href="#">4282458907 (0xFF41231B)</a>
YUV	<a href="#">43.0580, -7.9166, 19.2431</a>
Hunter-Lab	<a href="#">15.5081, 7.1475, 5.7169</a>

# Details

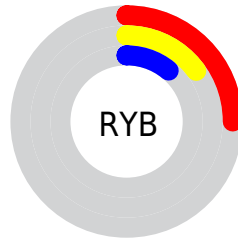
The Android color **4282458907** is a dark color, and the websafe version is hex **663333**. A complement of this color would be **4279974209**, and the grayscale version is **4281019179**.

A 20% lighter version of the original color is **4285747270**, and **4278583296** is the 20% darker color. If you saturate the color by 10%, you get **4282457621**, and if you desaturate by 10%, it is **4282460194**.

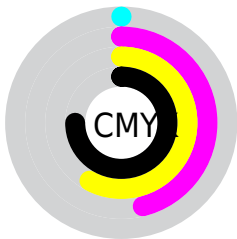
# Distribution



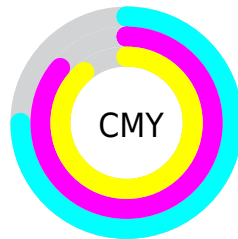
- Red (25%)
- Green (14%)
- Blue (11%)



- Red (25%)
- Yellow (15%)
- Blue (11%)



- Cyan (0%)
- Magenta (46%)
- Yellow (58%)
- Black (75%)



- Cyan (75%)
- Magenta (86%)
- Yellow (89%)

# Brightness & Saturation Gradients

These gradients show how the Android color 4282458907 changes by changing the brightness by 10 percent. The first figure shows a shift by +10% for each color and the second figure -10%.

Similar to the brightness gradients but the following saturation gradients show a change of the Android color 4282458907 by changing the saturation by 10% instead.





4282458907



4282458907

4294967295



4281011712



4285747270



4278583296



4287457374



4278190080



4289233271



4291074960



4292916907



4294824646



4294962914



4282458907



4282458907

■ 4282457621

■ 4282460194

■ 4282456334

■ 4282461480

■ 4282455048

■ 4282462767

■ 4282453505

■ 4282464309

■ 4282453504

■ 4282465596

■ 4282466882

■ 4282468169

■ 4282469455

■ 4282470742

# Harmonies

## Analogous

The Analogous color harmony consists of three colors that are next to each other on the color wheel.



4282589479



4282458907



4282001171

# Triad

The Triadic color harmony groups three colors that are evenly spaced from another and form a triangle on the color wheel.



4282458907



4279185698



4280232772

# Complementary

The Complementary color scheme is a pair of colors which are on the opposite of each other on the color wheel.



4282458907



4279974209

# Split Complementary

Split-complementary colors differ from the complementary color scheme. The scheme consists of three colors, the original color and two neighbors of the complement color.



4278332995



4282458907



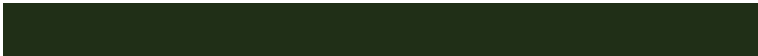
4278202671

# Square

The Square scheme is like the rectangle color scheme, but the four colors are evenly spaced on the color wheel.



4282458907



4280299287



4278202683



4281476670

# Rectangle

The Rectangle color scheme consists of four colors that form a rectangle on the color wheel.



4282458907



4281477649



4278202683



4279708740



# Sweetspot

The Sweet Spot groups the original color and five complimentary colors.



4282458907



4283713605



4282456889



4281017378



4289440683



4281019179



# Same Dimension

The Same Dimension uses a secret algorithm to generate beautiful new colors.



4282458907



4283704857



4282463771



4280360734



4284552192



4292882176



# Inverse Universe

The Inverse Universe completely reimagines the original color for something new.



4279974209



4279846996



4279969345



4280164385



4278209889

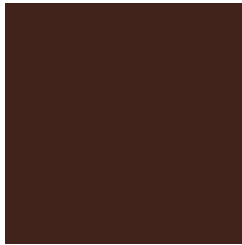


4278235616



# Previews

## White Background



This preview shows how the Android color 4282458907 looks on a white background.

## Color Contrast Check

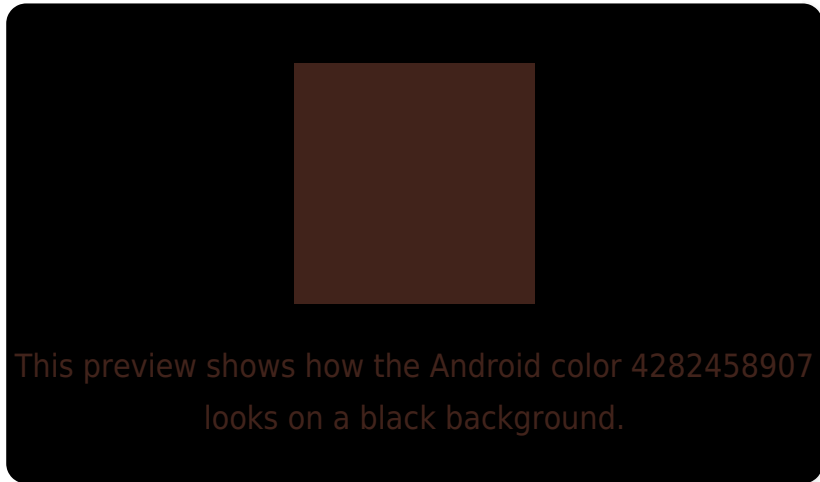
Large Text (above 18pt) WCAG AA ✓ Pass

Any Text WCAG AA ✓ Pass

Large Text (above 18pt) WCAG AAA ✓ Pass

Any Text WCAG AAA ✓ Pass

# Black Background



## Color Contrast Check

Large Text (above 18pt) WCAG AA × Fail

Any Text WCAG AA × Fail

Large Text (above 18pt) WCAG AAA × Fail

Any Text WCAG AAA × Fail

If you want to check with other color combinations, try the [Color Contrast Checker](#).



## Android 4282458907 Background



This preview shows how black text looks on a background with the Android color 4282458907.

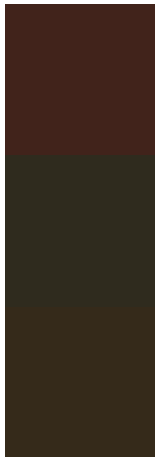


This preview shows how white text looks on a background with the Android color 4282458907.

# Color Blindness Simulation

Color vision deficiency is a very complex topic, and I could not describe the different causes any better than Wikipedia does, so if you want to learn more, you should check out their [article about color blindness](#).

## Dichromacy



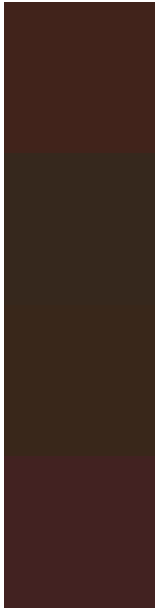
**Original Color**  
4282458907

**Protanopia**  
4281281310

**Deuteranopia**  
4281674266



# Trichromacy



**Original Color**

4282458907

**Protanomaly**

4281739293

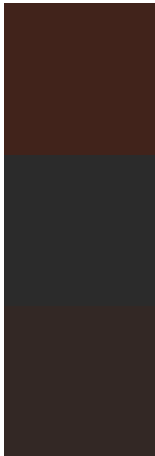
**Deuteranomaly**

4281935642

**Tritanomaly**

4282524193

# Monochromacy



**Original Color**

4282458907

**Achromatopsia**

4281019179

**Achromatomaly**

4281542693

# CSS Examples

## Text

The CSS property to change the color of the text to Android 4282458907 is called "color". The color property can be set on classes, ids or directly on the HTML element.

This example shows how text in the color `rgb(65, 35, 27)` looks like.

```
.text, #text, p{  
    color:rgb(65, 35, 27)  
}
```

If you want to add a text shadow in that color use the text-shadow property, you can generate a text shadow directly with our [CSS Text Shadow Generator](#).

Here you see how black text with a 4 pixel rgb(65, 35, 27) colored shadow looks like.

```
.shadow{ text-shadow: 4px 4px 2px rgb(65, 35, 27) }
```

## Border

The CSS property to change the border of an element to Android 4282458907 is called "border". The border property can be set on classes, ids or directly on the HTML element.

This example shows the color as border, it can be applied via the CSS property "border" or "border-color".

```
.border, #border, table{ border:4px solid rgb(65, 35, 27) }
```

If only the border color should be changed use the property `border-color`.

```
.border{ border-color:rgb(65, 35, 27) }
```

If you want to add a box shadow in that color use:

Here you see how a box with a 4 pixel `rgb(65, 35, 27)` colored shadow looks like.

```
.boxshadow{ -moz-box-shadow:4px 4px 4px  
4px rgb(65, 35, 27); -webkit-box-  
shadow:4px 4px 4px 4px rgb(65, 35, 27);  
box-shadow:4px 4px 4px 4px rgb(65, 35, 27)  
}
```

# Background

The CSS property to change the background color of an element to Android 4282458907 is called "background". The background property can be set on classes, ids or directly on the HTML element.

```
.background, #background, body{  
background: rgb(65, 35, 27) }
```

If only the background color should be changed can be used:

```
.background{ background-color: rgb(65, 35,  
27) }
```

This example shows the color as background, it is applied via the CSS property "background".

To optimize and compress your CSS code, you can use our [online CSS compressor and optimizer](#) based on csstidy. If you want to create a linear or radial gradient as background or border, check our [CSS Gradient Generator](#).



Hey! You found this booklet  
interesting? Support Converting  
Colors with the new Membership  
Option!

The pro membership hides all ads, plus gives you  
double the colors in the color bucket, and more  
awesome pro features!

**[Learn more, Memberships starting at \\$2.50/m!](#)**

**Follow me  
on Twitter!**

@ConvertingColor