

Converting Colors

Android(4282459687)

Have a look what the booklet for
Android(4282459687) contains.

Android(4282459687)	3
<i>Conversions</i>	4
<i>Details</i>	6
<i>Harmonies</i>	11
<i>Previews</i>	23
<i>Color Blindness Simulation</i>	26
<i>CSS Examples</i>	29

Color

Android(4282459687)

Conversions

Conversions Part 1

Format	Color
Hex	412627
RGB	65, 38, 39
RGB Percent	25%, 15%, 15%
CMY	0.7451, 0.8510, 0.8471
CMYK	0.00, 0.42, 0.40, 0.75
HSL	358°, 26%, 20%
HSV	358°, 42%, 25%
XYZ	3.2393, 2.6565, 2.2615
YIQ	46.1870, 15.7710, 6.0350

Conversions

Conversions Part 2

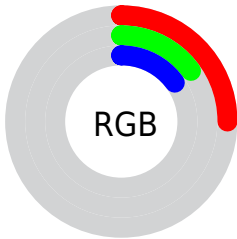
Format	Color
R_{YB}	65, 38, 39
Decimal	4269607
CIE _{Lab}	18.61, 12.92, 4.70
CIE _{LCh}	19, 13.747, 19.993
Yxy	2.6565, 0.3971, 0.3257
Android (android.graphics.Color)	4282459687 (0xFF412627)
YUV	46.1870, -3.5432, 16.4990
Hunter-Lab	16.2989, 6.9527, 3.1826

Details

The Android color **4282459687** is a dark color, and the websafe version is hex **333333**. A complement of this color would be **4280697152**, and the grayscale version is **4281216558**.

A 20% lighter version of the original color is **4285682516**, and **4279304192** is the 20% darker color. If you saturate the color by 10%, you get **4282458145**, and if you desaturate by 10%, it is **4282461485**.

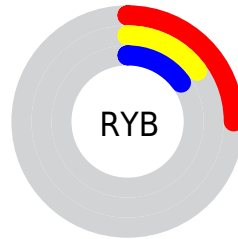
Distribution



Red (25%)

Green (15%)

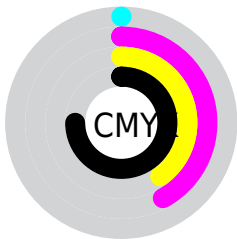
Blue (15%)



Red (25%)

Yellow (15%)

Blue (15%)

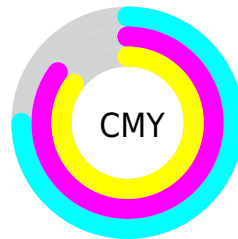


Cyan (0%)

Magenta (42%)

Yellow (40%)

Black (75%)



Cyan (75%)

Magenta (85%)

Yellow (85%)

Brightness & Saturation Gradients

These gradients show how the Android color 4282459687 changes by changing the brightness by 10 percent. The first figure shows a shift by +10% for each color and the second figure -10%.

Similar to the brightness gradients but the following saturation gradients show a change of the Android color 4282459687 by changing the saturation by 10% instead.



4282459687



4282459687

4294967295



4280946962



4285682516



4279304192



4287392876



4278190080



4289168773



4290944927



4292786874



4294694614



4294963954



4282459687



4282459687

■ 4282458145

■ 4282461485

■ 4282456346

■ 4282463028

■ 4282454804

■ 4282464826

■ 4282453006

■ 4282466368

■ 4282451464

■ 4282468166

■ 4282449922

■ 4282469709

■ 4282471507

■ 4282473049

■ 4282474847

Harmonies

Analogous

The Analogous color harmony consists of three colors that are next to each other on the color wheel.



4282328625



4282459687



4282263582

Triad

The Triadic color harmony groups three colors that are evenly spaced from another and form a triangle on the color wheel.



4282459687



4280430880



4279906113

Complementary

The Complementary color scheme is a pair of colors which are on the opposite of each other on the color wheel.



4282459687



4280697152

Split Complementary

Split-complementary colors differ from the complementary color scheme. The scheme consists of three colors, the original color and two neighbors of the complement color.



4278989372



4282459687



4279644970

Square

The Square scheme is like the rectangle color scheme, but the four colors are evenly spaced on the color wheel.



4282459687



4281151258



4278924084



4280953920

Rectangle

The Rectangle color scheme consists of four colors that form a rectangle on the color wheel.



4282459687



4282001947



4278924084



4279578688

Sweetspot

The Sweet Spot groups the original color and five complimentary colors.



4282459687



4283714122



4282394177



4281017638



4289440683



4281019179

Same Dimension

The Same Dimension uses a secret algorithm to generate beautiful new colors.



4282459687



4283705900



4282462758



4280360478



4284547076



4292870152

Inverse Universe

The Inverse Universe completely reimagines the original color for something new.



4282459687



4283705900



4280694081



4280360478



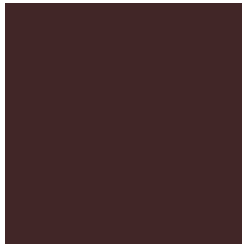
4284547076



4292870152

Previews

White Background



This preview shows how the Android color 4282459687 looks on a white background.

Color Contrast Check

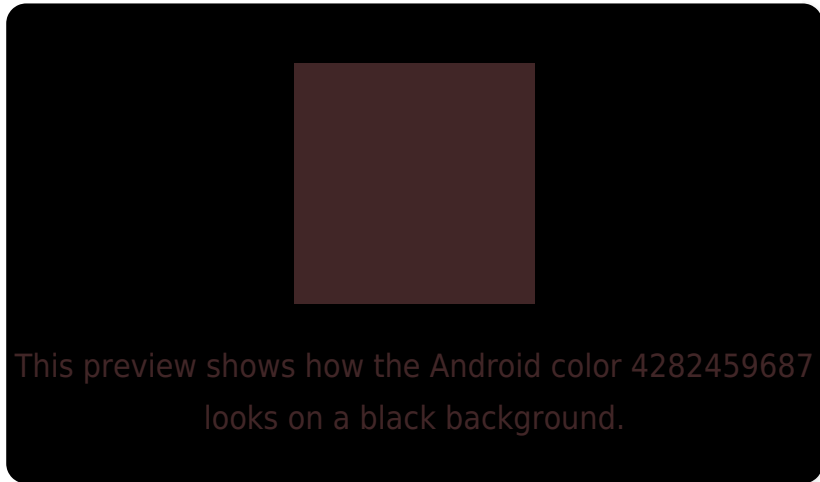
Large Text (above 18pt) WCAG AA ✓ Pass

Any Text WCAG AA ✓ Pass

Large Text (above 18pt) WCAG AAA ✓ Pass

Any Text WCAG AAA ✓ Pass

Black Background



Color Contrast Check

Large Text (above 18pt) WCAG AA × Fail

Any Text WCAG AA × Fail

Large Text (above 18pt) WCAG AAA × Fail

Any Text WCAG AAA × Fail

If you want to check with other color combinations, try the [Color Contrast Checker](#).

Android 4282459687 Background



This preview shows how black text looks on a background with the Android color 4282459687.

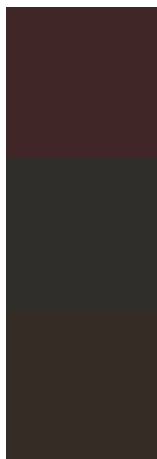


This preview shows how white text looks on a background with the Android color 4282459687.

Color Blindness Simulation

Color vision deficiency is a very complex topic, and I could not describe the different causes any better than Wikipedia does, so if you want to learn more, you should check out their [article about color blindness](#).

Dichromacy



Original Color

[4282459687](#)

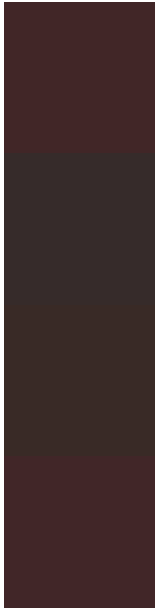
Protanopia

[4281282091](#)

Deuteranopia

[4281674790](#)

Trichromacy



Original Color

4282459687

Protanomaly

4281740074

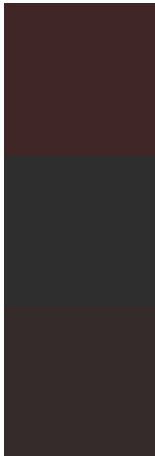
Deuteranomaly

4281936422

Tritanomaly

4282459688

Monochromacy



Original Color

4282459687

Achromatopsia

4281216558

Achromatomaly

4281674539

CSS Examples

Text

The CSS property to change the color of the text to Android 4282459687 is called "color". The color property can be set on classes, ids or directly on the HTML element.

This example shows how text in the color `rgb(65, 38, 39)` looks like.

```
.text, #text, p{  
    color:rgb(65, 38, 39)  
}
```

If you want to add a text shadow in that color use the text-shadow property, you can generate a text shadow directly with our [CSS Text Shadow Generator](#).

Here you see how black text with a 4 pixel rgb(65, 38, 39) colored shadow looks like.

```
.shadow{ text-shadow: 4px 4px 2px rgb(65, 38, 39) }
```

Border

The CSS property to change the border of an element to Android 4282459687 is called "border". The border property can be set on classes, ids or directly on the HTML element.

This example shows the color as border, it can be applied via the CSS property "border" or "border-color".

```
.border, #border, table{ border:4px solid rgb(65, 38, 39) }
```

If only the border color should be changed use the property `border-color`.

```
.border{ border-color:rgb(65, 38, 39) }
```

If you want to add a box shadow in that color use:

Here you see how a box with a 4 pixel `rgb(65, 38, 39)` colored shadow looks like.

```
.boxshadow{ -moz-box-shadow:4px 4px 4px  
4px rgb(65, 38, 39); -webkit-box-  
shadow:4px 4px 4px 4px rgb(65, 38, 39);  
box-shadow:4px 4px 4px 4px rgb(65, 38, 39)  
}
```

Background

The CSS property to change the background color of an element to Android 4282459687 is called "background". The background property can be set on classes, ids or directly on the HTML element.

```
.background, #background, body{  
background: rgb(65, 38, 39) }
```

If only the background color should be changed can be used:

```
.background{ background-color: rgb(65, 38,  
39) }
```

This example shows the color as background, it is applied via the CSS property "background".

To optimize and compress your CSS code, you can use our [online CSS compressor and optimizer](#) based on csstidy. If you want to create a linear or radial gradient as background or border, check our [CSS Gradient Generator](#).

Hey! You found this booklet interesting? Support Converting Colors with the new Membership Option!

The pro membership hides all ads, plus gives you double the colors in the color bucket, and more awesome pro features!

[Learn more, Memberships starting at \\$2.50/m!](#)

**Follow me
on Twitter!**

@ConvertingColor