

Converting Colors

Android(4282527539)

Have a look what the booklet for
Android(4282527539) contains.

Android(4282527539)	3
<i>Conversions</i>	4
<i>Details</i>	6
<i>Harmonies</i>	11
<i>Previews</i>	23
<i>Color Blindness Simulation</i>	26
<i>CSS Examples</i>	29

Color

Android(4282527539)

Conversions

Conversions Part 1

Format	Color
Hex	422F33
RGB	66, 47, 51
RGB Percent	26%, 18%, 20%
CMY	0.7412, 0.8157, 0.8000
CMYK	0.00, 0.29, 0.23, 0.74
HSL	347°, 17%, 22%
HSV	347°, 29%, 26%
XYZ	3.8608, 3.4303, 3.5906
YIQ	53.1370, 10.0400, 5.2720

Conversions

Conversions Part 2

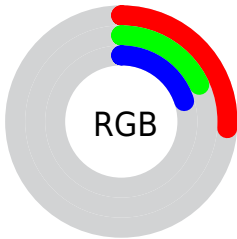
Format	Color
RYB	66, 47, 51
Decimal	4337459
CIELab	21.69, 9.42, 0.85
CIElCh	22, 9.455, 5.149
Yxy	3.4303, 0.3548, 0.3152
Android (android.graphics.Color)	4282527539 (0xFF422F33)
YUV	53.1370, -1.0535, 11.2809
Hunter-Lab	18.5211, 4.7975, 1.4705

Details

The Android color **4282527539** is a dark color, and the websafe version is hex **333333**. A complement of this color would be **4281287230**, and the grayscale version is **4281677109**.

A 20% lighter version of the original color is **4285685089**, and **4279828485** is the 20% darker color. If you saturate the color by 10%, you get **4282525742**, and if you desaturate by 10%, it is **4282529336**.

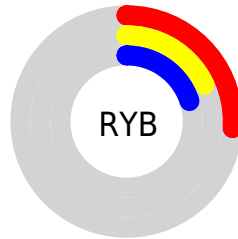
Distribution



Red (26%)

Green (18%)

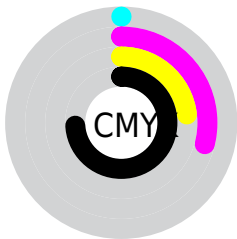
Blue (20%)



Red (26%)

Yellow (18%)

Blue (20%)

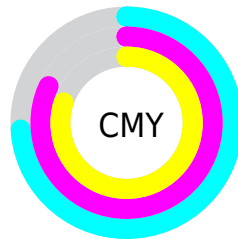


Cyan (0%)

Magenta (29%)

Yellow (23%)

Black (74%)



Cyan (74%)

Magenta (82%)

Yellow (80%)

Brightness & Saturation Gradients

These gradients show how the Android color 4282527539 changes by changing the brightness by 10 percent. The first figure shows a shift by +10% for each color and the second figure -10%.

Similar to the brightness gradients but the following saturation gradients show a change of the Android color 4282527539 by changing the saturation by 10% instead.



4282527539



4282527539

4294967295



4281080350



4285685089



4279828485



4287395450



4278190080



4289105812



4290947758



4292789706



4294631910

4294967039



4282527539



4282527539

■ 4282525742

■ 4282529336

■ 4282524201

■ 4282530877

■ 4282522403

■ 4282532675

■ 4282520862

■ 4282534216

■ 4282519065

■ 4282536013

■ 4282517268

■ 4282537810

■ 4282515727

■ 4282539351

■ 4282515470

■ 4282541149

■ 4282542690

Harmonies

Analogous

The Analogous color harmony consists of three colors that are next to each other on the color wheel.



4282265658



4282527539



4282527788

Triad

The Triadic color harmony groups three colors that are evenly spaced from another and form a triangle on the color wheel.



4282527539



4281349672



4280628800

Complementary

The Complementary color scheme is a pair of colors which are on the opposite of each other on the color wheel.



4282527539



4281287230

Split Complementary

Split-complementary colors differ from the complementary color scheme. The scheme consists of three colors, the original color and two neighbors of the complement color.



4280367164



4282527539



4280825646

Square

The Square scheme is like the rectangle color scheme, but the four colors are evenly spaced on the color wheel.



4282527539



4281873446



4280432693



4281152578

Rectangle

The Rectangle color scheme consists of four colors that form a rectangle on the color wheel.



4282527539



4282396969



4280432693



4280497983

Sweetspot

The Sweet Spot groups the original color and five complimentary colors.



4282527539



4283912017



4282265410



4281018152



4289440683



4281019179

Same Dimension

The Same Dimension uses a secret algorithm to generate beautiful new colors.



4282527539



4283906111



4282528815



4280360479



4284547092



4292870191

Inverse Universe

The Inverse Universe completely reimagines the original color for something new.



4282527539



4283906111



4281285954



4280360479



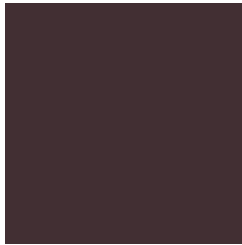
4284547092



4292870191

Previews

White Background



This preview shows how the Android color 4282527539 looks on a white background.

Color Contrast Check

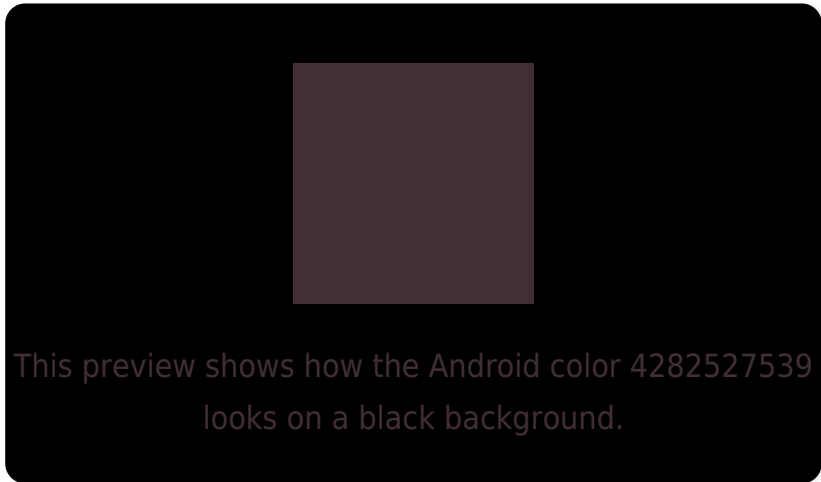
Large Text (above 18pt) WCAG AA ✓ Pass

Any Text WCAG AA ✓ Pass

Large Text (above 18pt) WCAG AAA ✓ Pass

Any Text WCAG AAA ✓ Pass

Black Background



Color Contrast Check

Large Text (above 18pt) WCAG AA × Fail

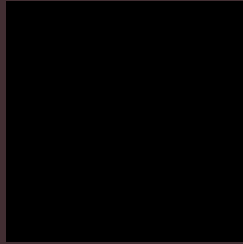
Any Text WCAG AA × Fail

Large Text (above 18pt) WCAG AAA × Fail

Any Text WCAG AAA × Fail

If you want to check with other color combinations, try the [Color Contrast Checker](#).

Android 4282527539 Background



This preview shows how black text looks on a background with the Android color 4282527539.

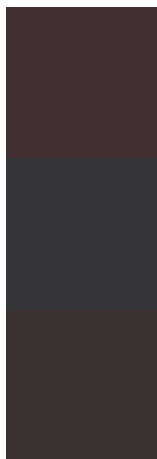


This preview shows how white text looks on a background with the Android color 4282527539.

Color Blindness Simulation

Color vision deficiency is a very complex topic, and I could not describe the different causes any better than Wikipedia does, so if you want to learn more, you should check out their [article about color blindness](#).

Dichromacy



Original Color

4282527539

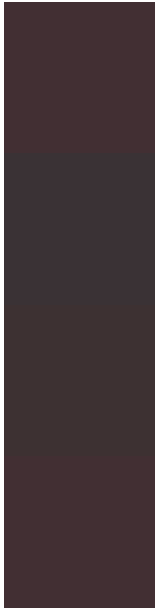
Protanopia

4281676854

Deuteranopia

4282004018

Trichromacy



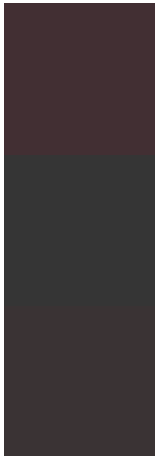
Original Color
4282527539

Protanomaly
4282004021

Deuteranomaly
4282200370

Tritanomaly
4282527539

Monochromacy



Original Color
4282527539

Achromatopsia
4281677109

Achromatomaly
4282004276

CSS Examples

Text

The CSS property to change the color of the text to Android 4282527539 is called "color". The color property can be set on classes, ids or directly on the HTML element.

This example shows how text in the color `rgb(66, 47, 51)` looks like.

```
.text, #text, p{  
    color:rgb(66, 47, 51)  
}
```

If you want to add a text shadow in that color use the text-shadow property, you can generate a text shadow directly with our [CSS Text Shadow Generator](#).

Here you see how black text with a 4 pixel rgb(66, 47, 51) colored shadow looks like.

```
.shadow{ text-shadow: 4px 4px 2px rgb(66, 47, 51) }
```

Border

The CSS property to change the border of an element to Android 4282527539 is called "border". The border property can be set on classes, ids or directly on the HTML element.

This example shows the color as border, it can be applied via the CSS property "border" or "border-color".

```
.border, #border, table{ border:4px solid rgb(66, 47, 51) }
```

If only the border color should be changed use the property `border-color`.

```
.border{ border-color:rgb(66, 47, 51) }
```

If you want to add a box shadow in that color use:

Here you see how a box with a 4 pixel `rgb(66, 47, 51)` colored shadow looks like.

```
.boxshadow{ -moz-box-shadow:4px 4px 4px  
4px rgb(66, 47, 51); -webkit-box-  
shadow:4px 4px 4px 4px rgb(66, 47, 51);  
box-shadow:4px 4px 4px 4px rgb(66, 47, 51)  
}
```

Background

The CSS property to change the background color of an element to Android 4282527539 is called "background". The background property can be set on classes, ids or directly on the HTML element.

```
.background, #background, body{  
background: rgb(66, 47, 51) }
```

If only the background color should be changed can be used:

```
.background{ background-color: rgb(66, 47,  
51) }
```

This example shows the color as background, it is applied via the CSS property "background".

To optimize and compress your CSS code, you can use our [online CSS compressor and optimizer](#) based on csstidy. If you want to create a linear or radial gradient as background or border, check our [CSS Gradient Generator](#).

Hey! You found this booklet interesting? Support Converting Colors with the new Membership Option!

The pro membership hides all ads, plus gives you double the colors in the color bucket, and more awesome pro features!

[Learn more, Memberships starting at \\$2.50/m!](#)

**Follow me
on Twitter!**

@ConvertingColor