

Converting Colors

Android(4282588439)

Have a look what the booklet for
Android(4282588439) contains.

Android(4282588439)	3
<i>Conversions</i>	4
<i>Details</i>	6
<i>Harmonies</i>	11
<i>Previews</i>	23
<i>Color Blindness Simulation</i>	26
<i>CSS Examples</i>	29

Color

Android(4282588439)

Conversions

Conversions Part 1

Format	Color
Hex	431D17
RGB	67, 29, 23
RGB Percent	26%, 11%, 9%
CMY	0.7373, 0.8863, 0.9098
CMYK	0.00, 0.57, 0.66, 0.74
HSL	8°, 49%, 18%
HSV	8°, 66%, 26%
XYZ	2.9088, 2.1339, 1.0692
YIQ	39.6780, 24.5740, 6.1900

Conversions

Conversions Part 2

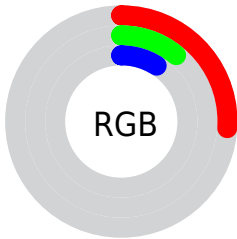
Format	Color
RYB	67, 30, 23
Decimal	4398359
CIELab	16.17, 17.71, 12.65
CIElCh	16, 21.763, 35.525
Yxy	2.1339, 0.4759, 0.3491
Android (android.graphics.Color)	4282588439 (0xFF431D17)
YUV	39.6780, -8.2223, 23.9614
Hunter-Lab	14.6078, 9.9798, 5.8859

Details

The Android color **4282588439** is a dark color, and the websafe version is hex **330000**. A complement of this color would be **4279713091**, and the grayscale version is **4280821800**.

A 20% lighter version of the original color is **4285942338**, and **4278386688** is the 20% darker color. If you saturate the color by 10%, you get **4282586896**, and if you desaturate by 10%, it is **4282589982**.

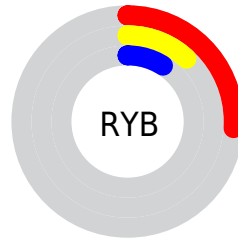
Distribution



 Red (26%)

 Green (11%)

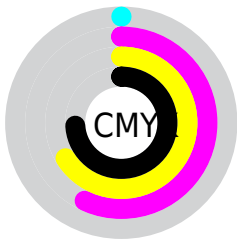
 Blue (9%)



 Red (26%)

 Yellow (12%)

 Blue (9%)

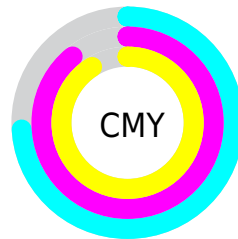


 Cyan (0%)

 Magenta (57%)

 Yellow (66%)

 Black (74%)



 Cyan (74%)

 Magenta (89%)

 Yellow (91%)

Brightness & Saturation Gradients

These gradients show how the Android color 4282588439 changes by changing the brightness by 10 percent. The first figure shows a shift by +10% for each color and the second figure -10%.

Similar to the brightness gradients but the following saturation gradients show a change of the Android color 4282588439 by changing the saturation by 10% instead.

 4282588439

 4282588439

 4294967289

 4281075456

 4285942338

 4278386688

 4287652441

 4278190080

 4289493874

 4291335563

 4293177509

 4294953921

 4294961116

 4282588439

 4282588439

■ 4282586896

■ 4282589982

■ 4282585354

■ 4282591524

■ 4282584067

■ 4282592811

■ 4282583296

■ 4282594354

■ 4282595897

■ 4282597439

■ 4282598982

■ 4282600269

■ 4282601811

Harmonies

Analogous

The Analogous color harmony consists of three colors that are next to each other on the color wheel.



4282653222



4282588439



4282065674

Triad

The Triadic color harmony groups three colors that are evenly spaced from another and form a triangle on the color wheel.



4282588439



4278595355



4279183687

Complementary

The Complementary color scheme is a pair of colors which are on the opposite of each other on the color wheel.



4282588439



4279713091

Split Complementary

Split-complementary colors differ from the complementary color scheme. The scheme consists of three colors, the original color and two neighbors of the complement color.



4278201668



4282588439



4278202411

Square

The Square scheme is like the rectangle color scheme, but the four colors are evenly spaced on the color wheel.



4282588439



4280167437



4278202170



4281148225

Rectangle

The Rectangle color scheme consists of four colors that form a rectangle on the color wheel.



4282588439



4281542149



4278202170



4278201159

Sweetspot

The Sweet Spot groups the original color and five complimentary colors.



4282588439



4283910213



4282586941



4281016865



4289440683



4281019179

Same Dimension

The Same Dimension uses a secret algorithm to generate beautiful new colors.



4282588439



4283898898



4282594071



4280360478



4284550400



4292878080

Inverse Universe

The Inverse Universe completely reimagines the original color for something new.



4279713091



4279389527



4279707459



4280164641



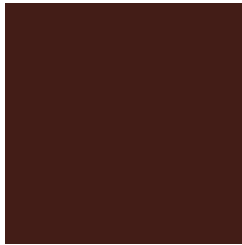
4278211681



4278239968

Previews

White Background



This preview shows how the Android color 4282588439 looks on a white background.

Color Contrast Check

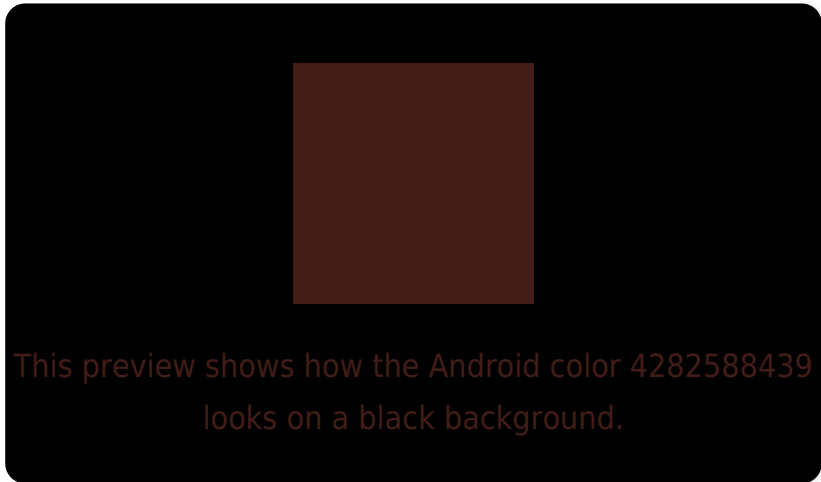
Large Text (above 18pt) WCAG AA ✓ Pass

Any Text WCAG AA ✓ Pass

Large Text (above 18pt) WCAG AAA ✓ Pass

Any Text WCAG AAA ✓ Pass

Black Background



Color Contrast Check

Large Text (above 18pt) WCAG AA × Fail

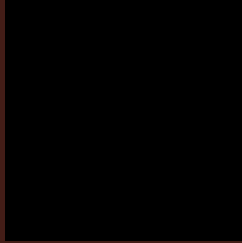
Any Text WCAG AA × Fail

Large Text (above 18pt) WCAG AAA × Fail

Any Text WCAG AAA × Fail

If you want to check with other color combinations, try the [Color Contrast Checker](#).

Android 4282588439 Background



This preview shows how black text looks on a background with the Android color 4282588439.

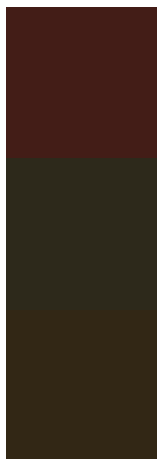


This preview shows how white text looks on a background with the Android color 4282588439.

Color Blindness Simulation

Color vision deficiency is a very complex topic, and I could not describe the different causes any better than Wikipedia does, so if you want to learn more, you should check out their [article about color blindness](#).

Dichromacy



Original Color

4282588439

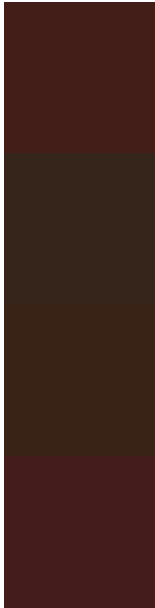
Protanopia

4281149723

Deuteranopia

4281476885

Trichromacy



Original Color

4282588439

Protanomaly

4281672986

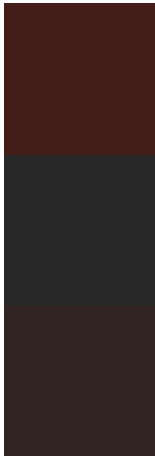
Deuteranomaly

4281869078

Tritanomaly

4282588187

Monochromacy



Original Color

4282588439

Achromatopsia

4280821800

Achromatomaly

4281476130

CSS Examples

Text

The CSS property to change the color of the text to Android 4282588439 is called "color". The color property can be set on classes, ids or directly on the HTML element.

This example shows how text in the color `rgb(67, 29, 23)` looks like.

```
.text, #text, p{  
    color:rgb(67, 29, 23)  
}
```

If you want to add a text shadow in that color use the text-shadow property, you can generate a text shadow directly with our [CSS Text Shadow Generator](#).

Here you see how black text with a 4 pixel rgb(67, 29, 23) colored shadow looks like.

```
.shadow{ text-shadow: 4px 4px 2px rgb(67, 29, 23) }
```

Border

The CSS property to change the border of an element to Android 4282588439 is called "border". The border property can be set on classes, ids or directly on the HTML element.

This example shows the color as border, it can be applied via the CSS property "border" or "border-color".

```
.border, #border, table{ border:4px solid rgb(67, 29, 23) }
```

If only the border color should be changed use the property `border-color`.

```
.border{ border-color:rgb(67, 29, 23) }
```

If you want to add a box shadow in that color use:

Here you see how a box with a 4 pixel `rgb(67, 29, 23)` colored shadow looks like.

```
.boxshadow{ -moz-box-shadow:4px 4px 4px  
4px rgb(67, 29, 23); -webkit-box-  
shadow:4px 4px 4px 4px rgb(67, 29, 23);  
box-shadow:4px 4px 4px 4px rgb(67, 29, 23)  
}
```

Background

The CSS property to change the background color of an element to Android 4282588439 is called "background". The background property can be set on classes, ids or directly on the HTML element.

```
.background, #background, body{  
background: rgb(67, 29, 23) }
```

If only the background color should be changed can be used:

```
.background{ background-color: rgb(67, 29,  
23) }
```

This example shows the color as background, it is applied via the CSS property "background".

To optimize and compress your CSS code, you can use our [online CSS compressor and optimizer](#) based on csstidy. If you want to create a linear or radial gradient as background or border, check our [CSS Gradient Generator](#).

Hey! You found this booklet interesting? Support Converting Colors with the new Membership Option!

The pro membership hides all ads, plus gives you double the colors in the color bucket, and more awesome pro features!

[Learn more, Memberships starting at \\$2.50/m!](#)

**Follow me
on Twitter!**

@ConvertingColor