

Converting Colors

Android(4282589211)

Have a look what the booklet for
Android(4282589211) contains.

Android(4282589211)	3
<i>Conversions</i>	4
<i>Details</i>	6
<i>Harmonies</i>	11
<i>Previews</i>	23
<i>Color Blindness Simulation</i>	26
<i>CSS Examples</i>	29

Color

Android(4282589211)

Conversions

Conversions Part 1

Format	Color
Hex	43201B
RGB	67, 32, 27
RGB Percent	26%, 13%, 11%
CMY	0.7373, 0.8745, 0.8941
CMYK	0.00, 0.52, 0.60, 0.74
HSL	8°, 43%, 18%
HSV	8°, 60%, 26%
XYZ	3.0291, 2.3054, 1.3223
YIQ	41.8950, 22.4650, 5.8650

Conversions

Conversions Part 2

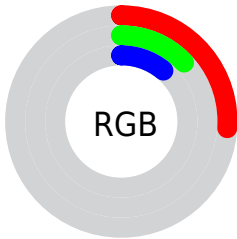
Format	Color
RYB	67, 33, 27
Decimal	4399131
CIELab	17.01, 16.22, 10.95
CIElCh	17, 19.569, 34.029
Yxy	2.3054, 0.4550, 0.3463
Android (android.graphics.Color)	4282589211 (0xFF43201B)
YUV	41.8950, -7.3432, 22.0171
Hunter-Lab	15.1837, 9.0385, 5.4654

Details

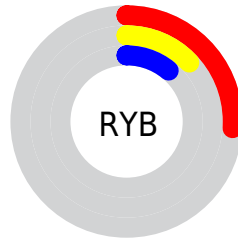
The Android color **4282589211** is a dark color, and the websafe version is hex **663333**. A complement of this color would be **4279975491**, and the grayscale version is **4280953386**.

A 20% lighter version of the original color is **4285877574**, and **4278779904** is the 20% darker color. If you saturate the color by 10%, you get **4282587668**, and if you desaturate by 10%, it is **4282590754**.

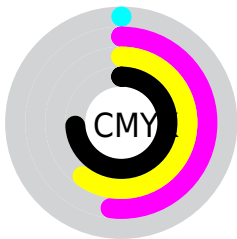
Distribution



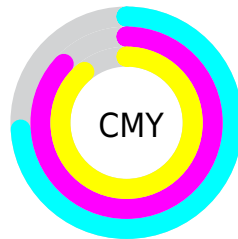
- Red (26%)
- Green (13%)
- Blue (11%)



- Red (26%)
- Yellow (13%)
- Blue (11%)



- Cyan (0%)
- Magenta (52%)
- Yellow (60%)
- Black (74%)



- Cyan (74%)
- Magenta (87%)
- Yellow (89%)

Brightness & Saturation Gradients

These gradients show how the Android color 4282589211 changes by changing the brightness by 10 percent. The first figure shows a shift by +10% for each color and the second figure -10%.

Similar to the brightness gradients but the following saturation gradients show a change of the Android color 4282589211 by changing the saturation by 10% instead.



4282589211



4282589211

4294967295



4281076480



4285877574



4278779904



4287653214



4278190080



4289429111



4291270800



4293112747



4294954950



4294962146



4282589211



4282589211

■ 4282587668

■ 4282590754

■ 4282586126

■ 4282592296

■ 4282584583

■ 4282593839

■ 4282583296

■ 4282595126

■ 4282583040

■ 4282596669

■ 4282598211

■ 4282599754

■ 4282601297

■ 4282602839

Harmonies

Analogous

The Analogous color harmony consists of three colors that are next to each other on the color wheel.



4282654249



4282589211



4282131729

Triad

The Triadic color harmony groups three colors that are evenly spaced from another and form a triangle on the color wheel.



4282589211



4279185437



4279577414

Complementary

The Complementary color scheme is a pair of colors which are on the opposite of each other on the color wheel.



4282589211



4279975491

Split Complementary

Split-complementary colors differ from the complementary color scheme. The scheme consists of three colors, the original color and two neighbors of the complement color.



4278202179



4282589211



4278202667

Square

The Square scheme is like the rectangle color scheme, but the four colors are evenly spaced on the color wheel.



4282589211



4280430098



4278202681



4281148737

Rectangle

The Rectangle color scheme consists of four colors that form a rectangle on the color wheel.



4282589211



4281673741



4278202681



4278725702

Sweetspot

The Sweet Spot groups the original color and five complimentary colors.



4282589211



4283910471



4282587966



4281017122



4289440683



4281019179

Same Dimension

The Same Dimension uses a secret algorithm to generate beautiful new colors.



4282589211



4283899928



4282594331



4280360478



4284550144



4292877312

Inverse Universe

The Inverse Universe completely reimagines the original color for something new.



4279975491



4279783255



4279970371



4280164641



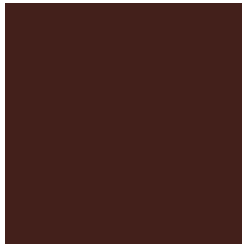
4278211937



4278240480

Previews

White Background



This preview shows how the Android color 4282589211 looks on a white background.

Color Contrast Check

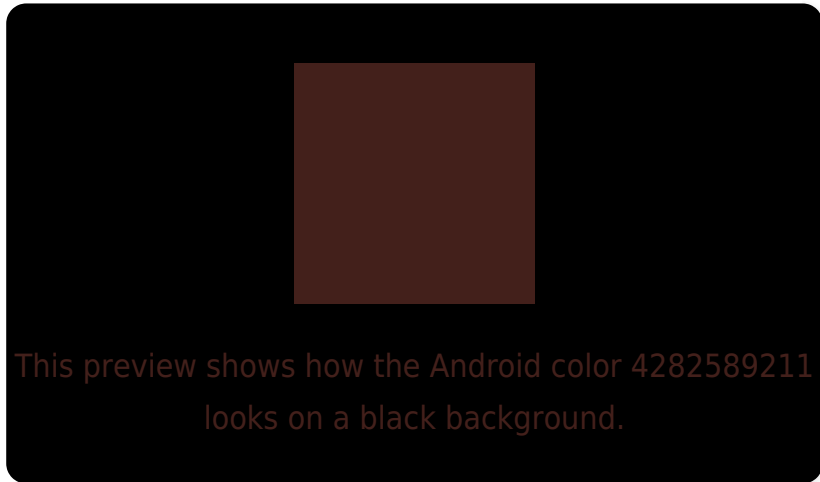
Large Text (above 18pt) WCAG AA ✓ Pass

Any Text WCAG AA ✓ Pass

Large Text (above 18pt) WCAG AAA ✓ Pass

Any Text WCAG AAA ✓ Pass

Black Background



Color Contrast Check

Large Text (above 18pt) WCAG AA × Fail

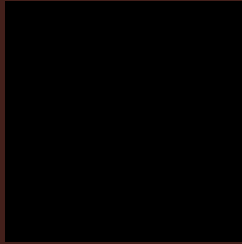
Any Text WCAG AA × Fail

Large Text (above 18pt) WCAG AAA × Fail

Any Text WCAG AAA × Fail

If you want to check with other color combinations, try the [Color Contrast Checker](#).

Android 4282589211 Background



This preview shows how black text looks on a background with the Android color 4282589211.

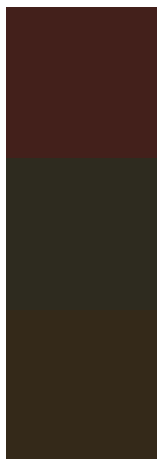


This preview shows how white text looks on a background with the Android color 4282589211.

Color Blindness Simulation

Color vision deficiency is a very complex topic, and I could not describe the different causes any better than Wikipedia does, so if you want to learn more, you should check out their [article about color blindness](#).

Dichromacy

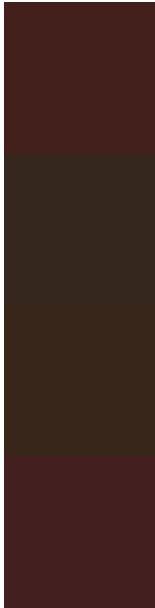


Original Color
4282589211

Protanopia
4281215775

Deuteranopia
4281608473

Trichromacy



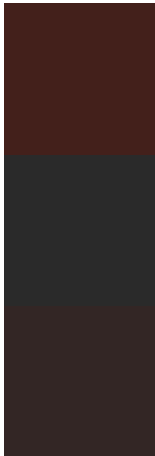
Original Color
4282589211

Protanomaly
4281739038

Deuteranomaly
4281935386

Tritanomaly
4282588959

Monochromacy



Original Color
4282589211

Achromatopsia
4280953386

Achromatomaly
4281542181

CSS Examples

Text

The CSS property to change the color of the text to Android 4282589211 is called "color". The color property can be set on classes, ids or directly on the HTML element.

This example shows how text in the color `rgb(67, 32, 27)` looks like.

```
.text, #text, p{  
    color:rgb(67, 32, 27)  
}
```

If you want to add a text shadow in that color use the text-shadow property, you can generate a text shadow directly with our [CSS Text Shadow Generator](#).

Here you see how black text with a 4 pixel rgb(67, 32, 27) colored shadow looks like.

```
.shadow{ text-shadow: 4px 4px 2px rgb(67, 32, 27) }
```

Border

The CSS property to change the border of an element to Android 4282589211 is called "border". The border property can be set on classes, ids or directly on the HTML element.

This example shows the color as border, it can be applied via the CSS property "border" or "border-color".

```
.border, #border, table{ border:4px solid rgb(67, 32, 27) }
```

If only the border color should be changed use the property `border-color`.

```
.border{ border-color:rgb(67, 32, 27) }
```

If you want to add a box shadow in that color use:

Here you see how a box with a 4 pixel `rgb(67, 32, 27)` colored shadow looks like.

```
.boxshadow{ -moz-box-shadow:4px 4px 4px  
4px rgb(67, 32, 27); -webkit-box-  
shadow:4px 4px 4px 4px rgb(67, 32, 27);  
box-shadow:4px 4px 4px 4px rgb(67, 32, 27)  
}
```

Background

The CSS property to change the background color of an element to Android 4282589211 is called "background". The background property can be set on classes, ids or directly on the HTML element.

```
.background, #background, body{  
background: rgb(67, 32, 27) }
```

If only the background color should be changed can be used:

```
.background{ background-color: rgb(67, 32,  
27) }
```

This example shows the color as background, it is applied via the CSS property "background".

To optimize and compress your CSS code, you can use our [online CSS compressor and optimizer](#) based on csstidy. If you want to create a linear or radial gradient as background or border, check our [CSS Gradient Generator](#).

Hey! You found this booklet
interesting? Support Converting
Colors with the new Membership
Option!

The pro membership hides all ads, plus gives you
double the colors in the color bucket, and more
awesome pro features!

[Learn more, Memberships starting at \\$2.50/m!](#)

**Follow me
on Twitter!**

@ConvertingColor