

Converting Colors

Android(4282590759)

Have a look what the booklet for
Android(4282590759) contains.

Android(4282590759)	3
<i>Conversions</i>	4
<i>Details</i>	6
<i>Harmonies</i>	11
<i>Previews</i>	23
<i>Color Blindness Simulation</i>	26
<i>CSS Examples</i>	29

Color

Android(4282590759)

Conversions

Conversions Part 1

Format	Color
Hex	432627
RGB	67, 38, 39
RGB Percent	26%, 15%, 15%
CMY	0.7373, 0.8510, 0.8471
CMYK	0.00, 0.43, 0.42, 0.74
HSL	358°, 28%, 21%
HSV	358°, 43%, 26%
XYZ	3.3741, 2.7260, 2.2678
YIQ	46.7850, 16.9630, 6.4590

Conversions

Conversions Part 2

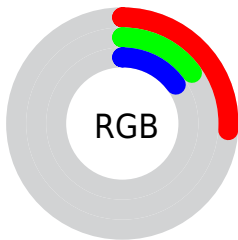
Format	Color
RYB	67, 38, 39
Decimal	4400679
CIELab	18.91, 13.85, 5.16
CIELCh	19, 14.779, 20.455
Yxy	2.7260, 0.4032, 0.3258
Android (android.graphics.Color)	4282590759 (0xFF432627)
YUV	46.7850, -3.8380, 17.7286
Hunter-Lab	16.5106, 7.5842, 3.4137

Details

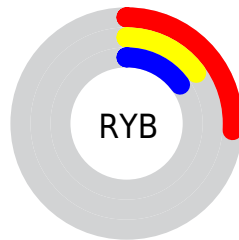
The Android color **4282590759** is a dark color, and the websafe version is hex **663333**. A complement of this color would be **4280697666**, and the grayscale version is **4281282351**.

A 20% lighter version of the original color is **4285813588**, and **4279500800** is the 20% darker color. If you saturate the color by 10%, you get **4282588961**, and if you desaturate by 10%, it is **4282592557**.

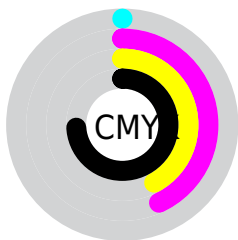
Distribution



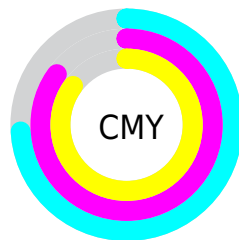
- Red (26%)
- Green (15%)
- Blue (15%)



- Red (26%)
- Yellow (15%)
- Blue (15%)



- Cyan (0%)
- Magenta (43%)
- Yellow (42%)
- Black (74%)



- Cyan (74%)
- Magenta (85%)
- Yellow (85%)

Brightness & Saturation Gradients

These gradients show how the Android color 4282590759 changes by changing the brightness by 10 percent. The first figure shows a shift by +10% for each color and the second figure -10%.

Similar to the brightness gradients but the following saturation gradients show a change of the Android color 4282590759 by changing the saturation by 10% instead.



4282590759



4282590759

4294967295



4281078034



4285813588



4279500800



4287523948



4278190080



4289299845



4291141535



4292983482



4294891222



4294963954



4282590759



4282590759

■ 4282588961

■ 4282592557

■ 4282587418

■ 4282594100

■ 4282585620

■ 4282595898

■ 4282583821

■ 4282597697

■ 4282582023

■ 4282599495

■ 4282580994

■ 4282601038

■ 4282602836

■ 4282604635

■ 4282606177

Harmonies

Analogous

The Analogous color harmony consists of three colors that are next to each other on the color wheel.



4282459698



4282590759



4282394654

Triad

The Triadic color harmony groups three colors that are evenly spaced from another and form a triangle on the color wheel.



4282590759



4280365600



4279840835

Complementary

The Complementary color scheme is a pair of colors which are on the opposite of each other on the color wheel.



4282590759



4280697666

Split Complementary

Split-complementary colors differ from the complementary color scheme. The scheme consists of three colors, the original color and two neighbors of the complement color.



4278727486



4282590759



4279514154

Square

The Square scheme is like the rectangle color scheme, but the four colors are evenly spaced on the color wheel.



4282590759



4281217050



4278662197



4280953922

Rectangle

The Rectangle color scheme consists of four colors that form a rectangle on the color wheel.



4282590759



4282067738



4278662197



4279447874

Sweetspot

The Sweet Spot groups the original color and five complimentary colors.



4282590759



4283910988



4282525251



4281017381



4289440683



4281019179

Same Dimension

The Same Dimension uses a secret algorithm to generate beautiful new colors.



4282590759



4283902507



4282594086



4280360478



4284547075



4292870152

Inverse Universe

The Inverse Universe completely reimagines the original color for something new.



4282590759



4283902507



4280694339



4280360478



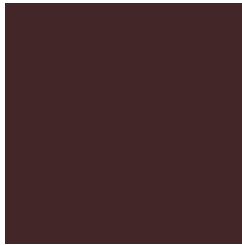
4284547075



4292870152

Previews

White Background



This preview shows how the Android color 4282590759 looks on a white background.

Color Contrast Check

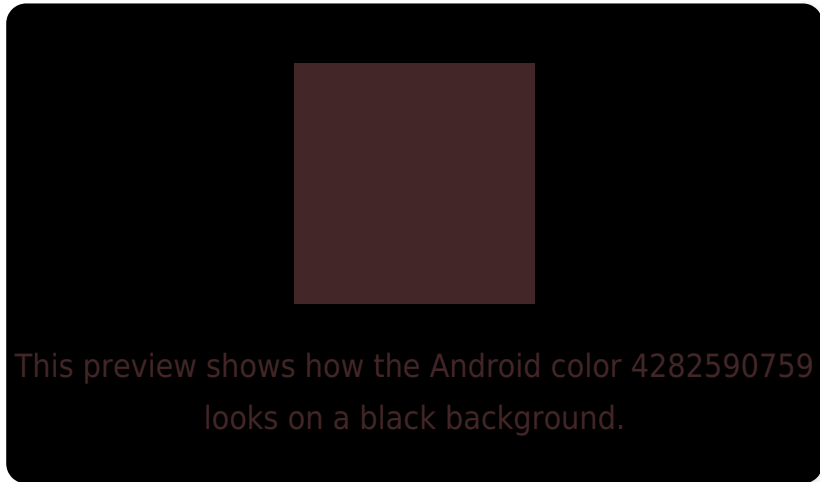
Large Text (above 18pt) WCAG AA ✓ Pass

Any Text WCAG AA ✓ Pass

Large Text (above 18pt) WCAG AAA ✓ Pass

Any Text WCAG AAA ✓ Pass

Black Background



Color Contrast Check

Large Text (above 18pt) WCAG AA × Fail

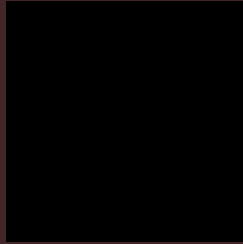
Any Text WCAG AA × Fail

Large Text (above 18pt) WCAG AAA × Fail

Any Text WCAG AAA × Fail

If you want to check with other color combinations, try the [Color Contrast Checker](#).

Android 4282590759 Background



This preview shows how black text looks on a background with the Android color 4282590759.

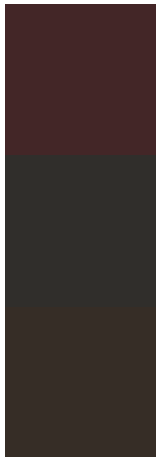


This preview shows how white text looks on a background with the Android color 4282590759.

Color Blindness Simulation

Color vision deficiency is a very complex topic, and I could not describe the different causes any better than Wikipedia does, so if you want to learn more, you should check out their [article about color blindness](#).

Dichromacy

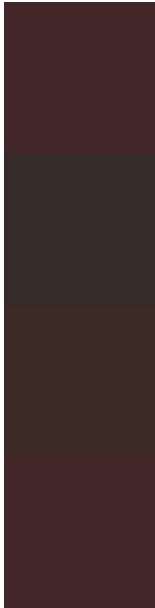


Original Color
4282590759

Protanopia
4281347627

Deuteranopia
4281740582

Trichromacy



Original Color

4282590759

Protanomaly

4281805610

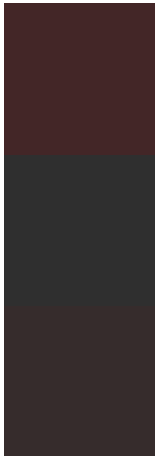
Deuteranomaly

4282067494

Tritanomaly

4282590760

Monochromacy



Original Color

4282590759

Achromatopsia

4281282351

Achromatomaly

4281740332

CSS Examples

Text

The CSS property to change the color of the text to Android 4282590759 is called "color". The color property can be set on classes, ids or directly on the HTML element.

This example shows how text in the color `rgb(67, 38, 39)` looks like.

```
.text, #text, p{  
    color:rgb(67, 38, 39)  
}
```

If you want to add a text shadow in that color use the text-shadow property, you can generate a text shadow directly with our [CSS Text Shadow Generator](#).

Here you see how black text with a 4 pixel rgb(67, 38, 39) colored shadow looks like.

```
.shadow{ text-shadow: 4px 4px 2px rgb(67, 38, 39) }
```

Border

The CSS property to change the border of an element to Android 4282590759 is called "border". The border property can be set on classes, ids or directly on the HTML element.

This example shows the color as border, it can be applied via the CSS property "border" or "border-color".

```
.border, #border, table{ border:4px solid rgb(67, 38, 39) }
```

If only the border color should be changed use the property `border-color`.

```
.border{ border-color:rgb(67, 38, 39) }
```

If you want to add a box shadow in that color use:

Here you see how a box with a 4 pixel `rgb(67, 38, 39)` colored shadow looks like.

```
.boxshadow{ -moz-box-shadow:4px 4px 4px  
4px rgb(67, 38, 39); -webkit-box-  
shadow:4px 4px 4px 4px rgb(67, 38, 39);  
box-shadow:4px 4px 4px 4px rgb(67, 38, 39)  
}
```

Background

The CSS property to change the background color of an element to Android 4282590759 is called "background". The background property can be set on classes, ids or directly on the HTML element.

```
.background, #background, body{  
background: rgb(67, 38, 39) }
```

If only the background color should be changed can be used:

```
.background{ background-color: rgb(67, 38,  
39) }
```

This example shows the color as background, it is applied via the CSS property "background".

To optimize and compress your CSS code, you can use our [online CSS compressor and optimizer](#) based on csstidy. If you want to create a linear or radial gradient as background or border, check our [CSS Gradient Generator](#).

Hey! You found this booklet interesting? Support Converting Colors with the new Membership Option!

The pro membership hides all ads, plus gives you double the colors in the color bucket, and more awesome pro features!

[Learn more, Memberships starting at \\$2.50/m!](#)

**Follow me
on Twitter!**

@ConvertingColor