

Converting Colors

Android(4282653197)

Have a look what the booklet for
Android(4282653197) contains.

Android(4282653197)	3
<i>Conversions</i>	4
<i>Details</i>	6
<i>Harmonies</i>	11
<i>Previews</i>	23
<i>Color Blindness Simulation</i>	26
<i>CSS Examples</i>	29

Color

Android(4282653197)

Conversions

Conversions Part 1

Format	Color
Hex	441A0D
RGB	68, 26, 13
RGB Percent	27%, 10%, 5%
CMY	0.7333, 0.8980, 0.9490
CMYK	0.00, 0.62, 0.81, 0.73
HSL	14°, 68%, 16%
HSV	14°, 81%, 27%
XYZ	2.8259, 1.9968, 0.6172
YIQ	37.0760, 29.2050, 4.8610

Conversions

Conversions Part 2

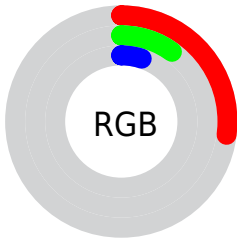
Format	Color
R_{YB}	68, 30, 13
Decimal	4463117
CIE _{Lab}	15.47, 19.25, 17.84
CIE _{LCh}	15, 26.248, 42.831
Yxy	1.9968, 0.5195, 0.3671
Android (android.graphics.Color)	4282653197 (0xFF441A0D)
YUV	37.0760, -11.8695, 27.1203
Hunter-Lab	14.1308, 10.9683, 7.3017

Details

The Android color **4282653197** is a dark color, and the websafe version is hex **330000**. A complement of this color would be **4279056196**, and the grayscale version is **4280624421**.

A 20% lighter version of the original color is **4286072632**, and **4278190080** is the 20% darker color. If you saturate the color by 10%, you get **4282651910**, and if you desaturate by 10%, it is **4282654484**.

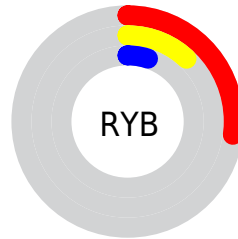
Distribution



 Red (27%)

 Green (10%)

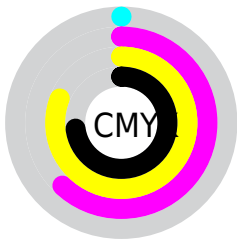
 Blue (5%)



 Red (27%)

 Yellow (12%)

 Blue (5%)

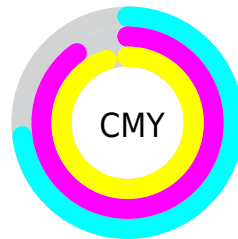


 Cyan (0%)

 Magenta (62%)

 Yellow (81%)

 Black (73%)



 Cyan (73%)

 Magenta (90%)

 Yellow (95%)

Brightness & Saturation Gradients

These gradients show how the Android color 4282653197 changes by changing the brightness by 10 percent. The first figure shows a shift by +10% for each color and the second figure -10%.

Similar to the brightness gradients but the following saturation gradients show a change of the Android color 4282653197 by changing the saturation by 10% instead.



4282653197



4282653197



4294967277



4281074688



4286072632



4278190080



4287848271



4289624167



4291531392



4293373082



4294953141



4294960337



4282653197



4282653197

■ 4282651910

■ 4282654484

■ 4282650624

■ 4282655771

■ 4282657313

■ 4282658600

■ 4282659887

■ 4282661174

■ 4282662461

■ 4282664003

■ 4282665290

Harmonies

Analogous

The Analogous color harmony consists of three colors that are next to each other on the color wheel.



4282913823



4282653197



4281934336

Triad

The Triadic color harmony groups three colors that are evenly spaced from another and form a triangle on the color wheel.



4282653197



4278202139



4279117387

Complementary

The Complementary color scheme is a pair of colors which are on the opposite of each other on the color wheel.



4282653197



4279056196

Split Complementary

Split-complementary colors differ from the complementary color scheme. The scheme consists of three colors, the original color and two neighbors of the complement color.



4278201418



4282653197



4278202158

Square

The Square scheme is like the rectangle color scheme, but the four colors are evenly spaced on the color wheel.



4282653197



4279512071



4278202176



4281474626

Rectangle

The Rectangle color scheme consists of four colors that form a rectangle on the color wheel.



4282653197



4281280000



4278202176



4278200396

Sweetspot

The Sweet Spot groups the original color and five complimentary colors.



4282653197



4284041540



4282649911



4281213985



4289572269



4281216558

Same Dimension

The Same Dimension uses a secret algorithm to generate beautiful new colors.



4282653197



4284028675



4282660109



4280360734



4284552960



4292883712

Inverse Universe

The Inverse Universe completely reimagines the original color for something new.



4279056196



4278404441



4279049284



4280164385



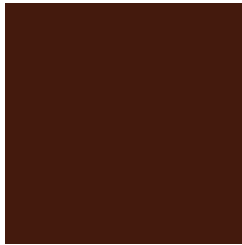
4278209121



4278234080

Previews

White Background



This preview shows how the Android color 4282653197 looks on a white background.

Color Contrast Check

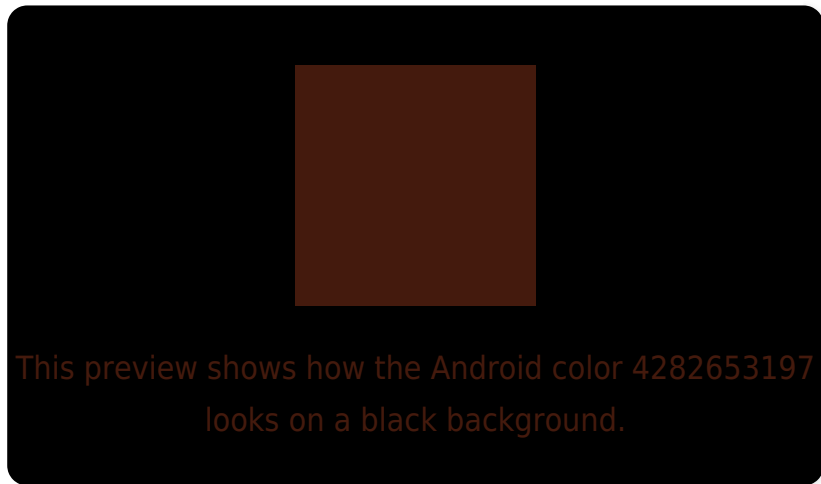
Large Text (above 18pt) WCAG AA ✓ Pass

Any Text WCAG AA ✓ Pass

Large Text (above 18pt) WCAG AAA ✓ Pass

Any Text WCAG AAA ✓ Pass

Black Background



Color Contrast Check

Large Text (above 18pt) WCAG AA × Fail

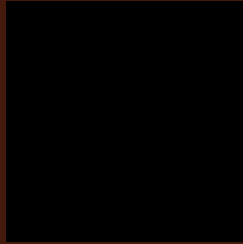
Any Text WCAG AA × Fail

Large Text (above 18pt) WCAG AAA × Fail

Any Text WCAG AAA × Fail

If you want to check with other color combinations, try the [Color Contrast Checker](#).

Android 4282653197 Background



This preview shows how black text looks on a background with the Android color 4282653197.

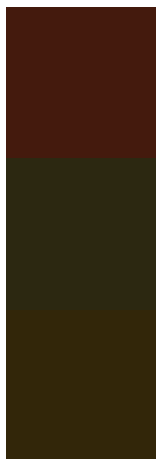


This preview shows how white text looks on a background with the Android color 4282653197.

Color Blindness Simulation

Color vision deficiency is a very complex topic, and I could not describe the different causes any better than Wikipedia does, so if you want to learn more, you should check out their [article about color blindness](#).

Dichromacy



Original Color
4282653197

Protanopia
4281083921

Deuteranopia
4281476617

Trichromacy



Original Color

4282653197

Protanomaly

4281672464

Deuteranomaly

4281934346

Tritanomaly

4282652949

Monochromacy



Original Color

4282653197

Achromatopsia

4280624421

Achromatomaly

4281344284

CSS Examples

Text

The CSS property to change the color of the text to Android 4282653197 is called "color". The color property can be set on classes, ids or directly on the HTML element.

This example shows how text in the color `rgb(68, 26, 13)` looks like.

```
.text, #text, p{  
    color:rgb(68, 26, 13)  
}
```

If you want to add a text shadow in that color use the text-shadow property, you can generate a text shadow directly with our [CSS Text Shadow Generator](#).

Here you see how black text with a 4 pixel rgb(68, 26, 13) colored shadow looks like.

```
.shadow{ text-shadow: 4px 4px 2px rgb(68, 26, 13) }
```

Border

The CSS property to change the border of an element to Android 4282653197 is called "border". The border property can be set on classes, ids or directly on the HTML element.

This example shows the color as border, it can be applied via the CSS property "border" or "border-color".

```
.border, #border, table{ border:4px solid rgb(68, 26, 13) }
```

If only the border color should be changed use the property `border-color`.

```
.border{ border-color:rgb(68, 26, 13) }
```

If you want to add a box shadow in that color use:

Here you see how a box with a 4 pixel `rgb(68, 26, 13)` colored shadow looks like.

```
.boxshadow{ -moz-box-shadow:4px 4px 4px  
4px rgb(68, 26, 13); -webkit-box-  
shadow:4px 4px 4px 4px rgb(68, 26, 13);  
box-shadow:4px 4px 4px 4px rgb(68, 26, 13)  
}
```

Background

The CSS property to change the background color of an element to Android 4282653197 is called "background". The background property can be set on classes, ids or directly on the HTML element.

```
.background, #background, body{  
background: rgb(68, 26, 13) }
```

If only the background color should be changed can be used:

```
.background{ background-color: rgb(68, 26,  
13) }
```

This example shows the color as background, it is applied via the CSS property "background".

To optimize and compress your CSS code, you can use our [online CSS compressor and optimizer](#) based on csstidy. If you want to create a linear or radial gradient as background or border, check our [CSS Gradient Generator](#).

Hey! You found this booklet interesting? Support Converting Colors with the new Membership Option!

The pro membership hides all ads, plus gives you double the colors in the color bucket, and more awesome pro features!

[Learn more, Memberships starting at \\$2.50/m!](#)

**Follow me
on Twitter!**

@ConvertingColor