

Converting Colors

Android(4282655014)

Have a look what the booklet for
Android(4282655014) contains.

Android(4282655014)	3
<i>Conversions</i>	4
<i>Details</i>	6
<i>Harmonies</i>	11
<i>Previews</i>	23
<i>Color Blindness Simulation</i>	26
<i>CSS Examples</i>	29

Color

Android(4282655014)

Conversions

Conversions Part 1

Format	Color
Hex	442126
RGB	68, 33, 38
RGB Percent	27%, 13%, 15%
CMY	0.7333, 0.8706, 0.8510
CMYK	0.00, 0.51, 0.44, 0.73
HSL	351°, 35%, 20%
HSV	351°, 51%, 27%
XYZ	3.2776, 2.4566, 2.1351
YIQ	44.0350, 19.2550, 8.9750

Conversions

Conversions Part 2

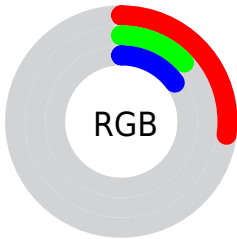
Format	Color
RYB	68, 33, 38
Decimal	4464934
CIELab	17.72, 17.40, 4.21
CIELCh	18, 17.897, 13.596
Yxy	2.4566, 0.4165, 0.3122
Android (android.graphics.Color)	4282655014 (0xFF442126)
YUV	44.0350, -2.9753, 21.0173
Hunter-Lab	15.6735, 9.8987, 2.8946

Details

The Android color **4282655014** is a dark color, and the websafe version is hex **663333**. A complement of this color would be **4280370239**, and the grayscale version is **4281084972**.

A 20% lighter version of the original color is **4285943379**, and **4279369728** is the 20% darker color. If you saturate the color by 10%, you get **4282653216**, and if you desaturate by 10%, it is **4282656812**.

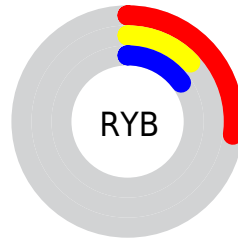
Distribution



Red (27%)

Green (13%)

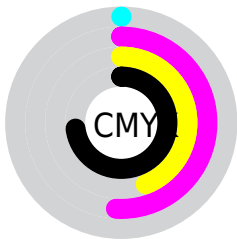
Blue (15%)



Red (27%)

Yellow (13%)

Blue (15%)

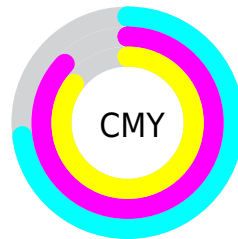


Cyan (0%)

Magenta (51%)

Yellow (44%)

Black (73%)



Cyan (73%)

Magenta (87%)

Yellow (85%)

Brightness & Saturation Gradients

These gradients show how the Android color 4282655014 changes by changing the brightness by 10 percent. The first figure shows a shift by +10% for each color and the second figure -10%.

Similar to the brightness gradients but the following saturation gradients show a change of the Android color 4282655014 by changing the saturation by 10% instead.

 4282655014

 4282655014

4294967295

 4281142289

 4285943379

 4279369728

 4287653483

 4278190080

 4289429636

 4291271326

 4293113273

 4294955221

 4294962673

 4282655014

 4282655014

■ 4282653216

■ 4282656812

■ 4282651418

■ 4282658610

■ 4282649877

■ 4282660151

■ 4282648079

■ 4282661949

■ 4282646538

■ 4282663747

■ 4282665545

■ 4282667343

■ 4282668885

■ 4282670682

Harmonies

Analogous

The Analogous color harmony consists of three colors that are next to each other on the color wheel.



4282393139



4282655014



4282459162

Triad

The Triadic color harmony groups three colors that are evenly spaced from another and form a triangle on the color wheel.



4282655014



4280234008



4278464324

Complementary

The Complementary color scheme is a pair of colors which are on the opposite of each other on the color wheel.



4282655014



4280370239

Split Complementary

Split-complementary colors differ from the complementary color scheme. The scheme consists of three colors, the original color and two neighbors of the complement color.



4278202685



4282655014



4279054884

Square

The Square scheme is like the rectangle color scheme, but the four colors are evenly spaced on the color wheel.



4282655014



4281216274



4278202929



4280363844

Rectangle

The Rectangle color scheme consists of four colors that form a rectangle on the color wheel.



4282655014



4282197781



4278202929



4278202434

Sweetspot

The Sweet Spot groups the original color and five complimentary colors.



4282655014



4284042318



4282327364



4281214503



4289572269



4281216558

Same Dimension

The Same Dimension uses a secret algorithm to generate beautiful new colors.



4282655014



4284031530



4282658081



4280360478



4284547086



4292870176

Inverse Universe

The Inverse Universe completely reimagines the original color for something new.



4282655014



4284031530



4280367172



4280360478



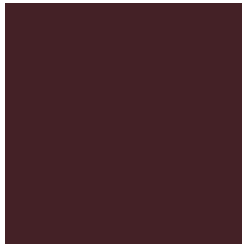
4284547086



4292870176

Previews

White Background



This preview shows how the Android color 4282655014 looks on a white background.

Color Contrast Check

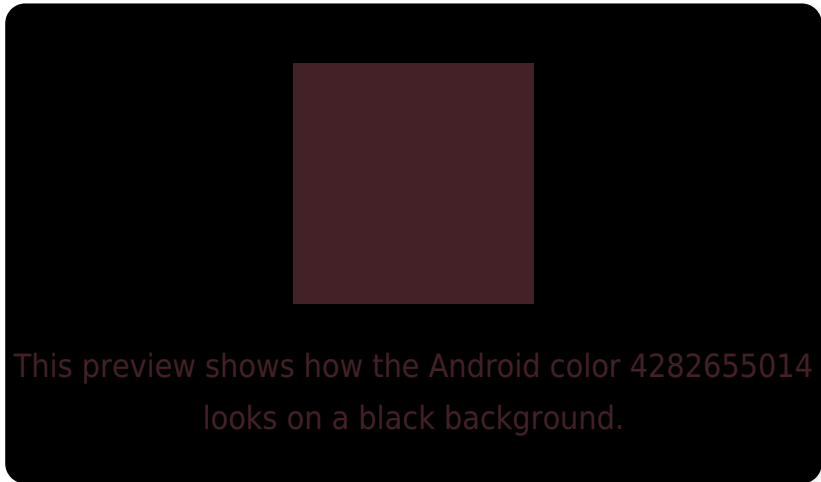
Large Text (above 18pt) WCAG AA ✓ Pass

Any Text WCAG AA ✓ Pass

Large Text (above 18pt) WCAG AAA ✓ Pass

Any Text WCAG AAA ✓ Pass

Black Background



Color Contrast Check

Large Text (above 18pt) WCAG AA × Fail

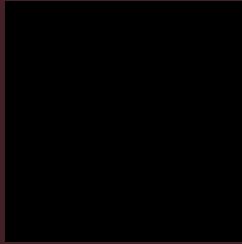
Any Text WCAG AA × Fail

Large Text (above 18pt) WCAG AAA × Fail

Any Text WCAG AAA × Fail

If you want to check with other color combinations, try the [Color Contrast Checker](#).

Android 4282655014 Background



This preview shows how black text looks on a background with the Android color 4282655014.

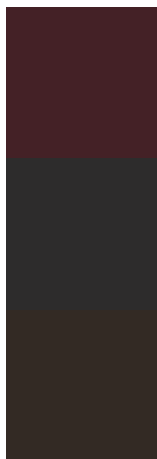


This preview shows how white text looks on a background with the Android color 4282655014.

Color Blindness Simulation

Color vision deficiency is a very complex topic, and I could not describe the different causes any better than Wikipedia does, so if you want to learn more, you should check out their [article about color blindness](#).

Dichromacy



Original Color

4282655014

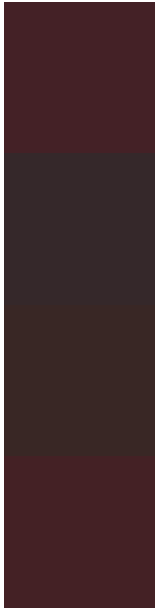
Protanopia

4281150508

Deuteranopia

4281543204

Trichromacy



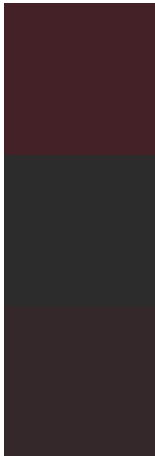
Original Color
4282655014

Protanomaly
4281673770

Deuteranomaly
4281935653

Tritanomaly
4282655013

Monochromacy



Original Color
4282655014

Achromatopsia
4281084972

Achromatomaly
4281673770

CSS Examples

Text

The CSS property to change the color of the text to Android 4282655014 is called "color". The color property can be set on classes, ids or directly on the HTML element.

This example shows how text in the color `rgb(68, 33, 38)` looks like.

```
.text, #text, p{  
    color:rgb(68, 33, 38)  
}
```

If you want to add a text shadow in that color use the text-shadow property, you can generate a text shadow directly with our [CSS Text Shadow Generator](#).

Here you see how black text with a 4 pixel rgb(68, 33, 38) colored shadow looks like.

```
.shadow{ text-shadow: 4px 4px 2px rgb(68, 33, 38) }
```

Border

The CSS property to change the border of an element to Android 4282655014 is called "border". The border property can be set on classes, ids or directly on the HTML element.

This example shows the color as border, it can be applied via the CSS property "border" or "border-color".

```
.border, #border, table{ border:4px solid rgb(68, 33, 38) }
```

If only the border color should be changed use the property `border-color`.

```
.border{ border-color:rgb(68, 33, 38) }
```

If you want to add a box shadow in that color use:

Here you see how a box with a 4 pixel `rgb(68, 33, 38)` colored shadow looks like.

```
.boxshadow{ -moz-box-shadow:4px 4px 4px  
4px rgb(68, 33, 38); -webkit-box-  
shadow:4px 4px 4px 4px rgb(68, 33, 38);  
box-shadow:4px 4px 4px 4px rgb(68, 33, 38)  
}
```

Background

The CSS property to change the background color of an element to Android 4282655014 is called "background". The background property can be set on classes, ids or directly on the HTML element.

```
.background, #background, body{  
background: rgb(68, 33, 38) }
```

If only the background color should be changed can be used:

```
.background{ background-color: rgb(68, 33,  
38) }
```

This example shows the color as background, it is applied via the CSS property "background".

To optimize and compress your CSS code, you can use our [online CSS compressor and optimizer](#) based on csstidy. If you want to create a linear or radial gradient as background or border, check our [CSS Gradient Generator](#).

Hey! You found this booklet interesting? Support Converting Colors with the new Membership Option!

The pro membership hides all ads, plus gives you double the colors in the color bucket, and more awesome pro features!

[Learn more, Memberships starting at \\$2.50/m!](#)

**Follow me
on Twitter!**

@ConvertingColor