

Converting Colors

Android(4282720034)

Have a look what the booklet for
Android(4282720034) contains.

Android(4282720034)	3
<i>Conversions</i>	4
<i>Details</i>	6
<i>Harmonies</i>	11
<i>Previews</i>	23
<i>Color Blindness Simulation</i>	26
<i>CSS Examples</i>	29

Color

Android(4282720034)

Conversions

Conversions Part 1

Format	Color
Hex	451F22
RGB	69, 31, 34
RGB Percent	27%, 12%, 13%
CMY	0.7294, 0.8784, 0.8667
CMYK	0.00, 0.55, 0.51, 0.73
HSL	355°, 38%, 20%
HSV	355°, 55%, 27%
XYZ	3.2330, 2.3607, 1.7986
YIQ	42.7040, 21.6850, 8.9890

Conversions

Conversions Part 2

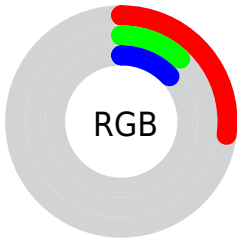
Format	Color
RYB	69, 31, 34
Decimal	4529954
CIELab	17.28, 18.57, 6.44
CIElCh	17, 19.655, 19.118
Yxy	2.3607, 0.4373, 0.3193
Android (android.graphics.Color)	4282720034 (0xFF451F22)
YUV	42.7040, -4.2911, 23.0616
Hunter-Lab	15.3645, 10.6717, 3.8144

Details

The Android color **4282720034** is a dark color, and the websafe version is hex **663333**. A complement of this color would be **4280239426**, and the grayscale version is **4281019179**.

A 20% lighter version of the original color is **4286008398**, and **4279304192** is the 20% darker color. If you saturate the color by 10%, you get **4282718236**, and if you desaturate by 10%, it is **4282721832**.

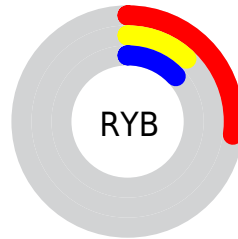
Distribution



Red (27%)

Green (12%)

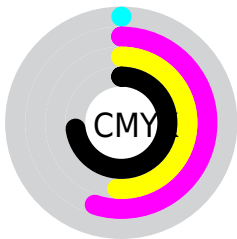
Blue (13%)



Red (27%)

Yellow (12%)

Blue (13%)

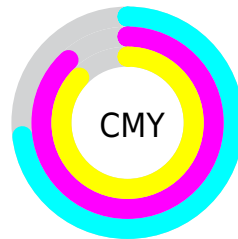


Cyan (0%)

Magenta (55%)

Yellow (51%)

Black (73%)



Cyan (73%)

Magenta (88%)

Yellow (87%)

Brightness & Saturation Gradients

These gradients show how the Android color 4282720034 changes by changing the brightness by 10 percent. The first figure shows a shift by +10% for each color and the second figure -10%.

Similar to the brightness gradients but the following saturation gradients show a change of the Android color 4282720034 by changing the saturation by 10% instead.



4282720034



4282720034

4294967295



4281207308



4286008398



4279304192



4287784038



4278190080



4289560191



4291401881



4293243572



4294954703



4294961899



4282720034



4282720034

■ 4282718236

■ 4282721832

■ 4282716437

■ 4282723631

■ 4282714639

■ 4282725429

■ 4282712841

■ 4282727227

■ 4282712069

■ 4282729026

■ 4282730568

■ 4282732366

■ 4282734165

■ 4282735963

Harmonies

Analogous

The Analogous color harmony consists of three colors that are next to each other on the color wheel.



4282523440



4282720034



4282458902

Triad

The Triadic color harmony groups three colors that are evenly spaced from another and form a triangle on the color wheel.



4282720034



4279906327



4278267206

Complementary

The Complementary color scheme is a pair of colors which are on the opposite of each other on the color wheel.



4282720034



4280239426

Split Complementary

Split-complementary colors differ from the complementary color scheme. The scheme consists of three colors, the original color and two neighbors of the complement color.



4278202431



4282720034



4278268197

Square

The Square scheme is like the rectangle color scheme, but the four colors are evenly spaced on the color wheel.



4282720034



4280953870



4278202931



4280494405

Rectangle

The Rectangle color scheme consists of four colors that form a rectangle on the color wheel.



4282720034



4282066448



4278202931



4278202181

Sweetspot

The Sweet Spot groups the original color and five complimentary colors.



4282720034



4284041803



4282523461



4281214245



4289572269



4281216558

Same Dimension

The Same Dimension uses a secret algorithm to generate beautiful new colors.



4282720034



4284030499



4282724127



4280557600



4284678152



4293066770

Inverse Universe

The Inverse Universe completely reimagines the original color for something new.



4282720034



4284030499



4280235333



4280557600



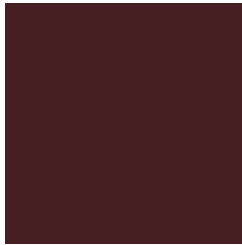
4284678152



4293066770

Previews

White Background



This preview shows how the Android color 4282720034 looks on a white background.

Color Contrast Check

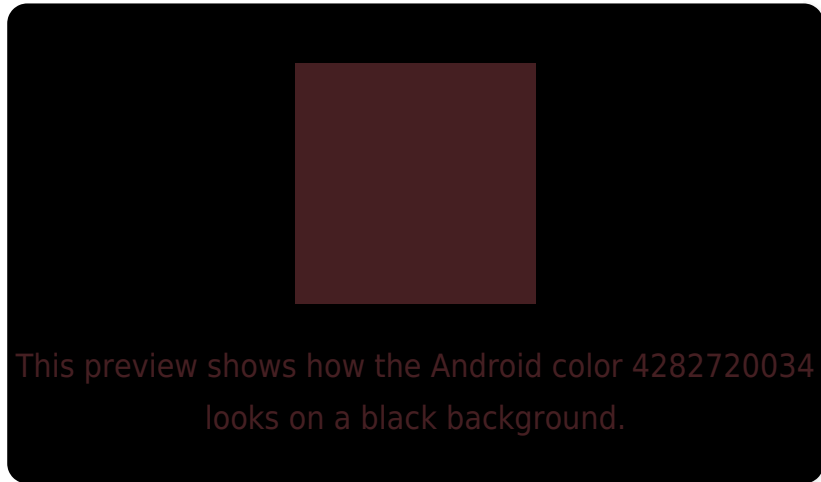
Large Text (above 18pt) WCAG AA ✓ Pass

Any Text WCAG AA ✓ Pass

Large Text (above 18pt) WCAG AAA ✓ Pass

Any Text WCAG AAA ✓ Pass

Black Background



Color Contrast Check

Large Text (above 18pt) WCAG AA × Fail

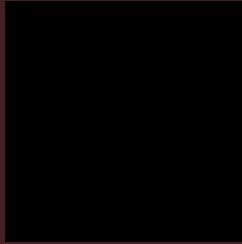
Any Text WCAG AA × Fail

Large Text (above 18pt) WCAG AAA × Fail

Any Text WCAG AAA × Fail

If you want to check with other color combinations, try the [Color Contrast Checker](#).

Android 4282720034 Background



This preview shows how black text looks on a background with the Android color 4282720034.



This preview shows how white text looks on a background with the Android color 4282720034.

Color Blindness Simulation

Color vision deficiency is a very complex topic, and I could not describe the different causes any better than Wikipedia does, so if you want to learn more, you should check out their [article about color blindness](#).

Dichromacy

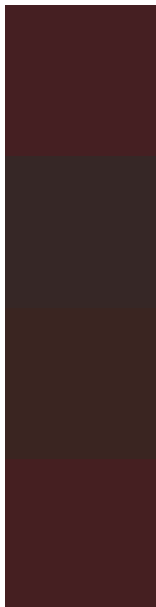


Original Color
4282720034

Protanopia
4281150248

Deuteranopia
4281542944

Trichromacy



Original Color

4282720034

Protanomaly

4281739046

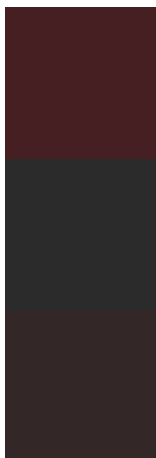
Deuteranomaly

4282000673

Tritanomaly

4282720033

Monochromacy



Original Color

4282720034

Achromatopsia

4281019179

Achromatomaly

4281607976

CSS Examples

Text

The CSS property to change the color of the text to Android 4282720034 is called "color". The color property can be set on classes, ids or directly on the HTML element.

This example shows how text in the color rgb(69, 31, 34) looks like.

```
.text, #text, p{  
    color:rgb(69, 31, 34)  
}
```

If you want to add a text shadow in that color use the text-shadow property, you can generate a text shadow directly with our [CSS Text Shadow Generator](#).

Here you see how black text with a 4 pixel rgb(69, 31, 34) colored shadow looks like.

```
.shadow{ text-shadow: 4px 4px 2px rgb(69, 31, 34) }
```

Border

The CSS property to change the border of an element to Android 4282720034 is called "border". The border property can be set on classes, ids or directly on the HTML element.

This example shows the color as border, it can be applied via the CSS property "border" or "border-color".

```
.border, #border, table{ border:4px solid rgb(69, 31, 34) }
```

If only the border color should be changed use the property `border-color`.

```
.border{ border-color:rgb(69, 31, 34) }
```

If you want to add a box shadow in that color use:

Here you see how a box with a 4 pixel `rgb(69, 31, 34)` colored shadow looks like.

```
.boxshadow{ -moz-box-shadow:4px 4px 4px  
4px rgb(69, 31, 34); -webkit-box-  
shadow:4px 4px 4px 4px rgb(69, 31, 34);  
box-shadow:4px 4px 4px 4px rgb(69, 31, 34)  
}
```

Background

The CSS property to change the background color of an element to Android 4282720034 is called "background". The background property can be set on classes, ids or directly on the HTML element.

```
.background, #background, body{  
background: rgb(69, 31, 34) }
```

If only the background color should be changed can be used:

```
.background{ background-color: rgb(69, 31,  
34) }
```

This example shows the color as background, it is applied via the CSS property "background".

To optimize and compress your CSS code, you can use our [online CSS compressor and optimizer](#) based on csstidy. If you want to create a linear or radial gradient as background or border, check our [CSS Gradient Generator](#).

Hey! You found this booklet interesting? Support Converting Colors with the new Membership Option!

The pro membership hides all ads, plus gives you double the colors in the color bucket, and more awesome pro features!

[Learn more, Memberships starting at \\$2.50/m!](#)

**Follow me
on Twitter!**

@ConvertingColor