

Converting Colors

Android(4282721057)

Have a look what the booklet for
Android(4282721057) contains.

Android(4282721057)	3
<i>Conversions</i>	4
<i>Details</i>	6
<i>Harmonies</i>	11
<i>Previews</i>	23
<i>Color Blindness Simulation</i>	26
<i>CSS Examples</i>	29

Color

Android(4282721057)

Conversions

Conversions Part 1

Format	Color
Hex	452321
RGB	69, 35, 33
RGB Percent	27%, 14%, 13%
CMY	0.7294, 0.8627, 0.8706
CMYK	0.00, 0.49, 0.52, 0.73
HSL	3°, 35%, 20%
HSV	3°, 52%, 27%
XYZ	3.3298, 2.5771, 1.7608
YIQ	44.9380, 20.9060, 6.5860

Conversions

Conversions Part 2

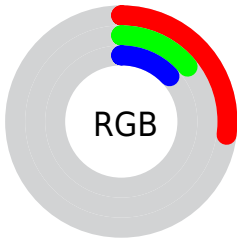
Format	Color
RYB	69, 35, 33
Decimal	4530977
CIELab	18.26, 15.92, 8.50
CIELCh	18, 18.044, 28.102
Yxy	2.5771, 0.4343, 0.3361
Android (android.graphics.Color)	4282721057 (0xFF452321)
YUV	44.9380, -5.8854, 21.1024
Hunter-Lab	16.0533, 8.9314, 4.7342

Details

The Android color **4282721057** is a dark color, and the websafe version is hex **663333**. A complement of this color would be **4280369989**, and the grayscale version is **4281150765**.

A 20% lighter version of the original color is **4286009421**, and **4279435264** is the 20% darker color. If you saturate the color by 10%, you get **4282719258**, and if you desaturate by 10%, it is **4282722856**.

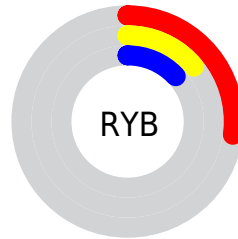
Distribution



Red (27%)

Green (14%)

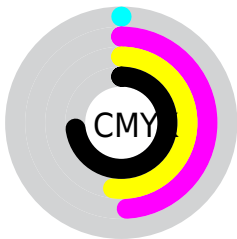
Blue (13%)



Red (27%)

Yellow (14%)

Blue (13%)

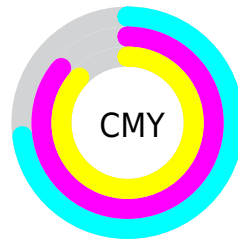


Cyan (0%)

Magenta (49%)

Yellow (52%)

Black (73%)



Cyan (73%)

Magenta (86%)

Yellow (87%)

Brightness & Saturation Gradients

These gradients show how the Android color 4282721057 changes by changing the brightness by 10 percent. The first figure shows a shift by +10% for each color and the second figure -10%.

Similar to the brightness gradients but the following saturation gradients show a change of the Android color 4282721057 by changing the saturation by 10% instead.



4282721057



4282721057

4294967295



4281208330



4286009421



4279435264



4287719525



4278190080



4289561214



4291337368



4293244851



4294955982



4294963178



4282721057



4282721057

■ 4282719258

■ 4282722856

■ 4282717715

■ 4282724399

■ 4282715916

■ 4282726198

■ 4282714373

■ 4282727741

■ 4282713088

■ 4282729540

■ 4282731082

■ 4282732881

■ 4282734424

■ 4282736223

Harmonies

Analogous

The Analogous color harmony consists of three colors that are next to each other on the color wheel.



4282655278



4282721057



4282328855

Triad

The Triadic color harmony groups three colors that are evenly spaced from another and form a triangle on the color wheel.



4282721057



4279775774



4279578182

Complementary

The Complementary color scheme is a pair of colors which are on the opposite of each other on the color wheel.



4282721057



4280369989

Split Complementary

Split-complementary colors differ from the complementary color scheme. The scheme consists of three colors, the original color and two neighbors of the complement color.



4278202690



4282721057



4278334251

Square

The Square scheme is like the rectangle color scheme, but the four colors are evenly spaced on the color wheel.



4282721057



4280823573



4278203192



4281084228

Rectangle

The Rectangle color scheme consists of four colors that form a rectangle on the color wheel.



4282721057



4281936403



4278203192



4278923078

Sweetspot

The Sweet Spot groups the original color and five complimentary colors.



4282721057



4284042315



4282720579



4281214501



4289572269



4281216558

Same Dimension

The Same Dimension uses a secret algorithm to generate beautiful new colors.



4282721057



4284032033



4282725665



4280557600



4284679680



4293070080

Inverse Universe

The Inverse Universe completely reimagines the original color for something new.



4280369989



4280374873



4280365381



4280296484



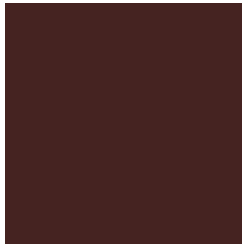
4278214243



4278245091

Previews

White Background



This preview shows how the Android color 4282721057 looks on a white background.

Color Contrast Check

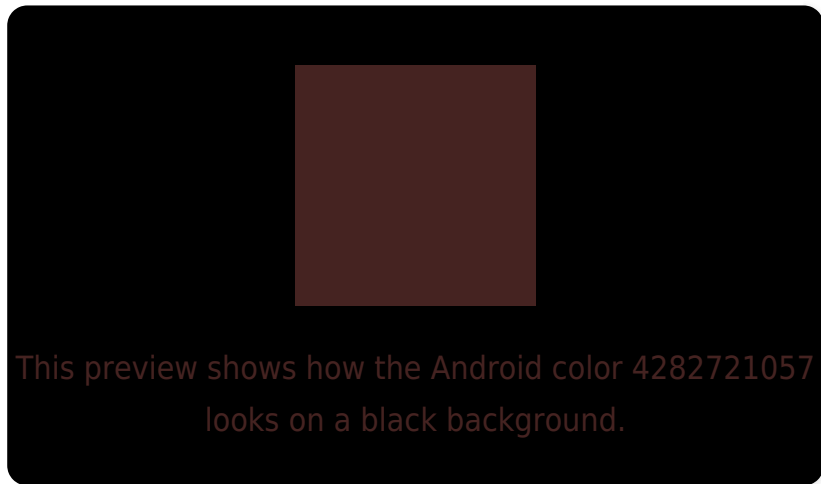
Large Text (above 18pt) WCAG AA ✓ Pass

Any Text WCAG AA ✓ Pass

Large Text (above 18pt) WCAG AAA ✓ Pass

Any Text WCAG AAA ✓ Pass

Black Background



Color Contrast Check

Large Text (above 18pt) WCAG AA × Fail

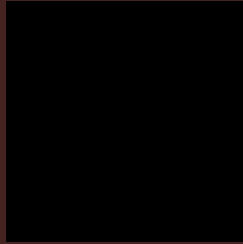
Any Text WCAG AA × Fail

Large Text (above 18pt) WCAG AAA × Fail

Any Text WCAG AAA × Fail

If you want to check with other color combinations, try the [Color Contrast Checker](#).

Android 4282721057 Background



This preview shows how black text looks on a background with the Android color 4282721057.

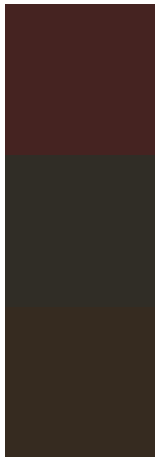


This preview shows how white text looks on a background with the Android color 4282721057.

Color Blindness Simulation

Color vision deficiency is a very complex topic, and I could not describe the different causes any better than Wikipedia does, so if you want to learn more, you should check out their [article about color blindness](#).

Dichromacy

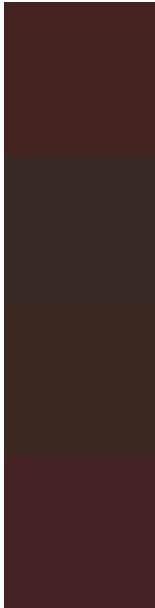


Original Color
4282721057

Protanopia
4281347366

Deuteranopia
4281740064

Trichromacy



Original Color

4282721057

Protanomaly

4281870628

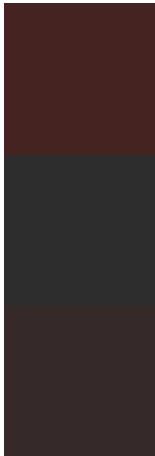
Deuteranomaly

4282066976

Tritanomaly

4282720804

Monochromacy



Original Color

4282721057

Achromatopsia

4281150765

Achromatomaly

4281739561

CSS Examples

Text

The CSS property to change the color of the text to Android 4282721057 is called "color". The color property can be set on classes, ids or directly on the HTML element.

This example shows how text in the color `rgb(69, 35, 33)` looks like.

```
.text, #text, p{  
    color:rgb(69, 35, 33)  
}
```

If you want to add a text shadow in that color use the text-shadow property, you can generate a text shadow directly with our [CSS Text Shadow Generator](#).

Here you see how black text with a 4 pixel rgb(69, 35, 33) colored shadow looks like.

```
.shadow{ text-shadow: 4px 4px 2px rgb(69, 35, 33) }
```

Border

The CSS property to change the border of an element to Android 4282721057 is called "border". The border property can be set on classes, ids or directly on the HTML element.

This example shows the color as border, it can be applied via the CSS property "border" or "border-color".

```
.border, #border, table{ border:4px solid rgb(69, 35, 33) }
```

If only the border color should be changed use the property `border-color`.

```
.border{ border-color:rgb(69, 35, 33) }
```

If you want to add a box shadow in that color use:

Here you see how a box with a 4 pixel `rgb(69, 35, 33)` colored shadow looks like.

```
.boxshadow{ -moz-box-shadow:4px 4px 4px  
4px rgb(69, 35, 33); -webkit-box-  
shadow:4px 4px 4px 4px rgb(69, 35, 33);  
box-shadow:4px 4px 4px 4px rgb(69, 35, 33)  
}
```

Background

The CSS property to change the background color of an element to Android 4282721057 is called "background". The background property can be set on classes, ids or directly on the HTML element.

```
.background, #background, body{  
background: rgb(69, 35, 33) }
```

If only the background color should be changed can be used:

```
.background{ background-color: rgb(69, 35,  
33) }
```

This example shows the color as background, it is applied via the CSS property "background".

To optimize and compress your CSS code, you can use our [online CSS compressor and optimizer](#) based on csstidy. If you want to create a linear or radial gradient as background or border, check our [CSS Gradient Generator](#).

Hey! You found this booklet interesting? Support Converting Colors with the new Membership Option!

The pro membership hides all ads, plus gives you double the colors in the color bucket, and more awesome pro features!

[Learn more, Memberships starting at \\$2.50/m!](#)

**Follow me
on Twitter!**

@ConvertingColor