

Converting Colors

Android(4282722601)

Have a look what the booklet for
Android(4282722601) contains.

| | |
|--|----|
| Android(4282722601) | 3 |
| <i>Conversions</i> | 4 |
| <i>Details</i> | 6 |
| <i>Harmonies</i> | 11 |
| <i>Previews</i> | 23 |
| <i>Color Blindness Simulation</i> | 26 |
| <i>CSS Examples</i> | 29 |

Color

Android(4282722601)

Conversions

Conversions Part 1

| Format | Color |
|-------------|--------------------------|
| Hex | 452929 |
| RGB | 69, 41, 41 |
| RGB Percent | 27%, 16%, 16% |
| CMY | 0.7294, 0.8392, 0.8392 |
| CMYK | 0.00, 0.41, 0.41, 0.73 |
| HSL | 0°, 25%, 22% |
| HSV | 0°, 41%, 27% |
| XYZ | 3.6474, 3.0112, 2.4868 |
| YIQ | 49.3720, 16.6880, 5.9360 |

Conversions

Conversions Part 2

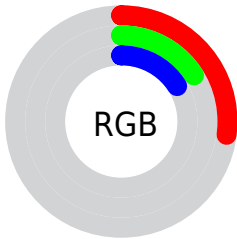
| Format | Color |
|-------------------------------------|------------------------------|
| R_{YB} | 69, 41, 41 |
| Decimal | 4532521 |
| CIE _{Lab} | 20.09, 13.10, 5.48 |
| CIE _{LCh} | 20, 14.195, 22.698 |
| Yxy | 3.0112, 0.3988, 0.3293 |
| Android (android.graphics.Color) | 4282722601 (0xFF452929) |
| YUV | 49.3720, -4.1274, 17.2138 |
| Hunter-Lab | 17.3528, 7.1521, 3.6502 |

Details

The Android color **4282722601** is a dark color, and the websafe version is hex **663333**. A complement of this color would be **4280894789**, and the grayscale version is **4281413937**.

A 20% lighter version of the original color is **4285945686**, and **4279894017** is the 20% darker color. If you saturate the color by 10%, you get **4282720802**, and if you desaturate by 10%, it is **4282724400**.

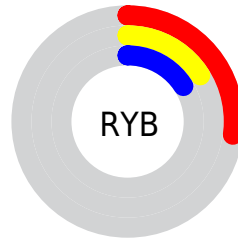
Distribution



Red (27%)

Green (16%)

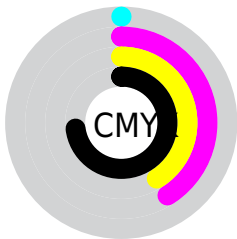
Blue (16%)



Red (27%)

Yellow (16%)

Blue (16%)

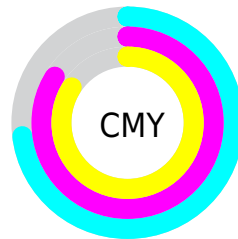


Cyan (0%)

Magenta (41%)

Yellow (41%)

Black (73%)



Cyan (73%)

Magenta (84%)

Yellow (84%)

Brightness & Saturation Gradients

These gradients show how the Android color 4282722601 changes by changing the brightness by 10 percent. The first figure shows a shift by +10% for each color and the second figure -10%.

Similar to the brightness gradients but the following saturation gradients show a change of the Android color 4282722601 by changing the saturation by 10% instead.



4282722601



4282722601

4294967295



4281209877



4285945686



4279894017



4287655790



4278190080



4289431944



4291273634



4293115581



4294957785



4294964981



4282722601



4282722601

■ 4282720802

■ 4282724400

■ 4282719003

■ 4282726199

■ 4282717204

■ 4282727998

■ 4282715405

■ 4282729797

■ 4282713863

■ 4282731596

■ 4282712064

■ 4282733138

■ 4282734937

■ 4282736736

■ 4282738535

Harmonies

Analogous

The Analogous color harmony consists of three colors that are next to each other on the color wheel.



4282591539



4282722601



4282526496

Triad

The Triadic color harmony groups three colors that are evenly spaced from another and form a triangle on the color wheel.



4282722601



4280562980



4280169029

Complementary

The Complementary color scheme is a pair of colors which are on the opposite of each other on the color wheel.



4282722601



4280894789

Split Complementary

Split-complementary colors differ from the complementary color scheme. The scheme consists of three colors, the original color and two neighbors of the complement color.



4279186753



4282722601



4279711278

Square

The Square scheme is like the rectangle color scheme, but the four colors are evenly spaced on the color wheel.



4282722601



4281283101



4279055928



4281216836

Rectangle

The Rectangle color scheme consists of four colors that form a rectangle on the color wheel.



4282722601



4282199581



4279055928



4279841604

Sweetspot

The Sweet Spot groups the original color and five complimentary colors.



4282722601



4284043087



4282722629



4281214759



4289572269



4281216558

Same Dimension

The Same Dimension uses a secret algorithm to generate beautiful new colors.



4282722601



4284034606



4282726185



4280557600



4284678144



4293066752

Inverse Universe

The Inverse Universe completely reimagines the original color for something new.



4280894789



4281227609



4280891205



4280296484



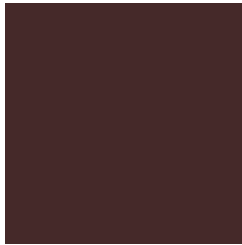
4278215523



4278248419

Previews

White Background



This preview shows how the Android color 4282722601 looks on a white background.

Color Contrast Check

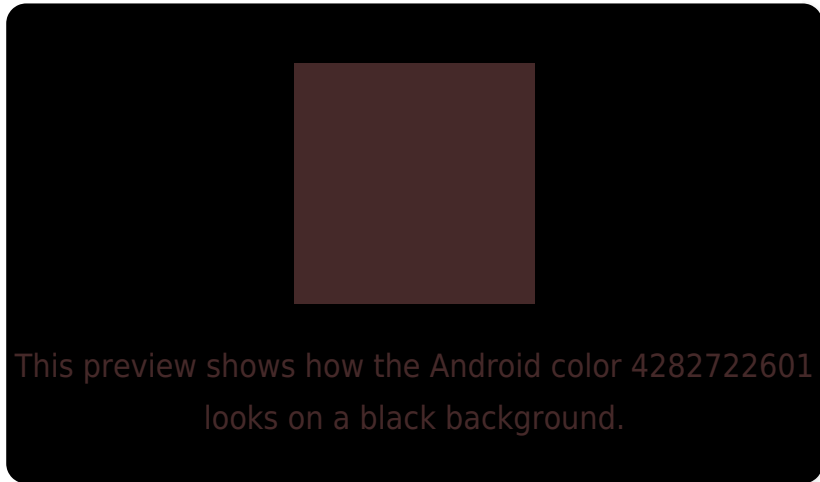
Large Text (above 18pt) WCAG AA ✓ Pass

Any Text WCAG AA ✓ Pass

Large Text (above 18pt) WCAG AAA ✓ Pass

Any Text WCAG AAA ✓ Pass

Black Background



Color Contrast Check

Large Text (above 18pt) WCAG AA × Fail

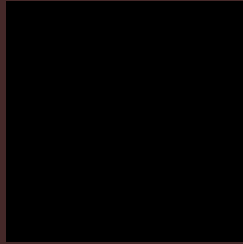
Any Text WCAG AA × Fail

Large Text (above 18pt) WCAG AAA × Fail

Any Text WCAG AAA × Fail

If you want to check with other color combinations, try the [Color Contrast Checker](#).

Android 4282722601 Background



This preview shows how black text looks on a background with the Android color 4282722601.

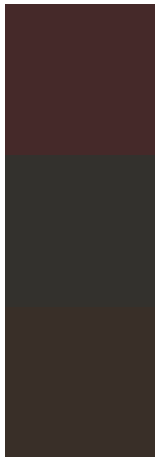


This preview shows how white text looks on a background with the Android color 4282722601.

Color Blindness Simulation

Color vision deficiency is a very complex topic, and I could not describe the different causes any better than Wikipedia does, so if you want to learn more, you should check out their [article about color blindness](#).

Dichromacy

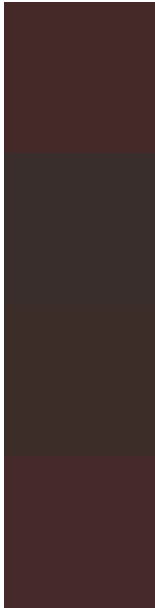


Original Color
4282722601

Protanopia
4281545005

Deuteranopia
4281937704

Trichromacy



Original Color

4282722601

Protanomaly

4282002988

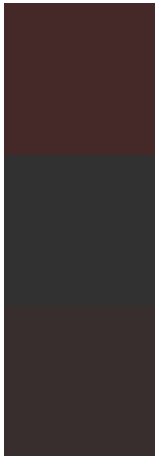
Deuteranomaly

4282199336

Tritanomaly

4282722603

Monochromacy



Original Color

4282722601

Achromatopsia

4281413937

Achromatomaly

4281871918

CSS Examples

Text

The CSS property to change the color of the text to Android 4282722601 is called "color". The color property can be set on classes, ids or directly on the HTML element.

This example shows how text in the color `rgb(69, 41, 41)` looks like.

```
.text, #text, p{  
    color:rgb(69, 41, 41)  
}
```

If you want to add a text shadow in that color use the text-shadow property, you can generate a text shadow directly with our [CSS Text Shadow Generator](#).

Here you see how black text with a 4 pixel rgb(69, 41, 41) colored shadow looks like.

```
.shadow{ text-shadow: 4px 4px 2px rgb(69, 41, 41) }
```

Border

The CSS property to change the border of an element to Android 4282722601 is called "border". The border property can be set on classes, ids or directly on the HTML element.

This example shows the color as border, it can be applied via the CSS property "border" or "border-color".

```
.border, #border, table{ border:4px solid rgb(69, 41, 41) }
```

If only the border color should be changed use the property border-color.

```
.border{ border-color:rgb(69, 41, 41) }
```

If you want to add a box shadow in that color use:

Here you see how a box with a 4 pixel rgb(69, 41, 41) colored shadow looks like.

```
.boxshadow{ -moz-box-shadow:4px 4px 4px  
4px rgb(69, 41, 41); -webkit-box-  
shadow:4px 4px 4px 4px rgb(69, 41, 41);  
box-shadow:4px 4px 4px 4px rgb(69, 41, 41)  
}
```

Background

The CSS property to change the background color of an element to Android 4282722601 is called "background". The background property can be set on classes, ids or directly on the HTML element.

```
.background, #background, body{  
background: rgb(69, 41, 41) }
```

If only the background color should be changed can be used:

```
.background{ background-color: rgb(69, 41,  
41) }
```

This example shows the color as background, it is applied via the CSS property "background".

To optimize and compress your CSS code, you can use our [online CSS compressor and optimizer](#) based on csstidy. If you want to create a linear or radial gradient as background or border, check our [CSS Gradient Generator](#).

Hey! You found this booklet interesting? Support Converting Colors with the new Membership Option!

The pro membership hides all ads, plus gives you double the colors in the color bucket, and more awesome pro features!

[Learn more, Memberships starting at \\$2.50/m!](#)

**Follow me
on Twitter!**

@ConvertingColor