

# Converting Colors

Android(4282785821)

Have a look what the booklet for  
Android(4282785821) contains.

<b>Android(4282785821)</b> .....	3
<b><i>Conversions</i></b> .....	4
<b><i>Details</i></b> .....	6
<b><i>Harmonies</i></b> .....	11
<b><i>Previews</i></b> .....	23
<b><i>Color Blindness Simulation</i></b> .....	26
<b><i>CSS Examples</i></b> .....	29

# Color

**Android(4282785821)**

# Conversions

## Conversions Part 1

Format	Color
Hex	46201D
RGB	70, 32, 29
RGB Percent	27%, 13%, 11%
CMY	0.7255, 0.8745, 0.8863
CMYK	0.00, 0.54, 0.59, 0.73
HSL	4°, 41%, 19%
HSV	4°, 59%, 27%
XYZ	3.2641, 2.4238, 1.4582
YIQ	43.0200, 23.6110, 7.1230

# Conversions

## Conversions Part 2

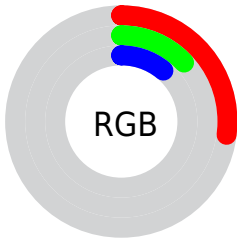
<b>Format</b>	<b>Color</b>
<b>R<sub>YB</sub></b>	70, 32, 29
Decimal	4595741
CIE Lab	17.57, 17.82, 10.39
CIE LCh	18, 20.626, 30.232
Yxy	2.4238, 0.4568, 0.3392
Android (android.graphics.Color)	4282785821 (0xFF46201D)
YUV	43.0200, -6.9119, 23.6615
Hunter-Lab	15.5686, 10.1786, 5.3448

# Details

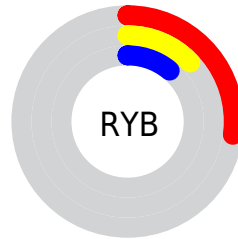
The Android color **4282785821** is a dark color, and the websafe version is hex **663333**. A complement of this color would be **4280107846**, and the grayscale version is **4281019179**.

A 20% lighter version of the original color is **4286139720**, and **4279304192** is the 20% darker color. If you saturate the color by 10%, you get **4282784278**, and if you desaturate by 10%, it is **4282787364**.

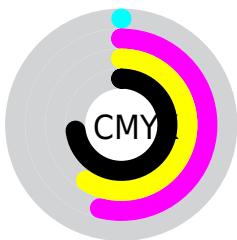
# Distribution



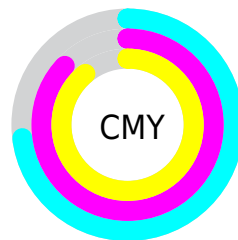
- Red (27%)
- Green (13%)
- Blue (11%)



- Red (27%)
- Yellow (13%)
- Blue (11%)



- Cyan (0%)
- Magenta (54%)
- Yellow (59%)
- Black (73%)



- Cyan (73%)
- Magenta (87%)
- Yellow (89%)

# Brightness & Saturation Gradients

These gradients show how the Android color 4282785821 changes by changing the brightness by 10 percent. The first figure shows a shift by +10% for each color and the second figure -10%.

Similar to the brightness gradients but the following saturation gradients show a change of the Android color 4282785821 by changing the saturation by 10% instead.





4282785821



4282785821

4294967295



4281273091



4286139720



4279304192



4287849824



4278190080



4289691513



4291533203



4293375149



4294954953



4294962149



4282785821



4282785821

■ 4282784278

■ 4282787364

■ 4282782479

■ 4282789163

■ 4282780936

■ 4282790706

■ 4282779137

■ 4282792505

■ 4282778880

■ 4282794048

■ 4282795847

■ 4282797390

■ 4282799189

■ 4282800732

# Harmonies

## Analogous

The Analogous color harmony consists of three colors that are next to each other on the color wheel.



4282785324



4282785821



4282328337

# Triad

The Triadic color harmony groups three colors that are evenly spaced from another and form a triangle on the color wheel.



4282785821



4279316764



4279184713

# Complementary

The Complementary color scheme is a pair of colors which are on the opposite of each other on the color wheel.



4282785821



4280107846

# Split Complementary

Split-complementary colors differ from the complementary color scheme. The scheme consists of three colors, the original color and two neighbors of the complement color.



4278202437



4282785821



4278202923

# Square

The Square scheme is like the rectangle color scheme, but the four colors are evenly spaced on the color wheel.



4282785821



4280626960



4278202938



4281083717

# Rectangle

The Rectangle color scheme consists of four colors that form a rectangle on the color wheel.



4282785821



4281870604



4278202938



4278201928



# Sweetspot

The Sweet Spot groups the original color and five complimentary colors.



4282785821



4284238923



4282785091



4281214244



4289572269



4281216558



# Same Dimension

The Same Dimension uses a secret algorithm to generate beautiful new colors.



4282785821



4284227612



4282790941



4280557600



4284679936



4293071104



# Inverse Universe

The Inverse Universe completely reimagines the original color for something new.



4280107846



4280047452



4280102726



4280296228



4278213731

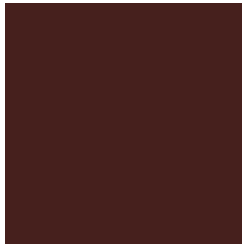


4278244067



# Previews

## White Background



This preview shows how the Android color 4282785821 looks on a white background.

## Color Contrast Check

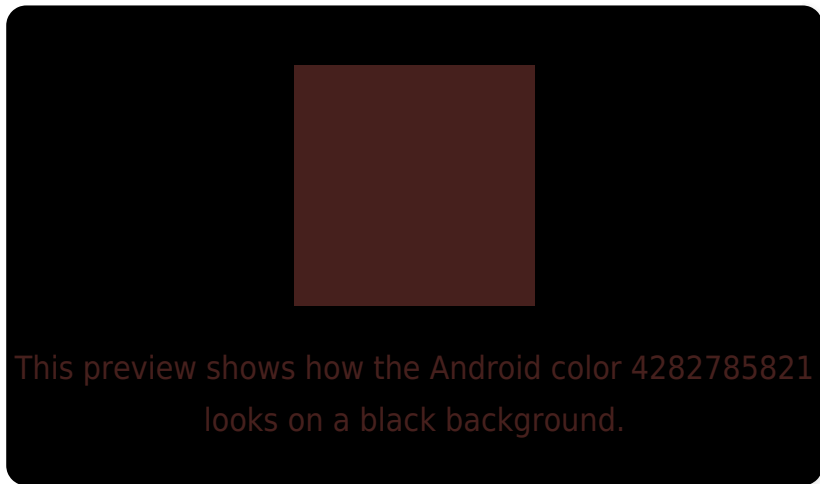
Large Text (above 18pt) WCAG AA ✓ Pass

Any Text WCAG AA ✓ Pass

Large Text (above 18pt) WCAG AAA ✓ Pass

Any Text WCAG AAA ✓ Pass

# Black Background



## Color Contrast Check

Large Text (above 18pt) WCAG AA × Fail

Any Text WCAG AA × Fail

Large Text (above 18pt) WCAG AAA × Fail

Any Text WCAG AAA × Fail

If you want to check with other color combinations, try the [Color Contrast Checker](#).



# Android 4282785821 Background



This preview shows how black text looks on a background with the Android color 4282785821.

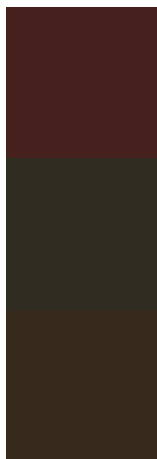


This preview shows how white text looks on a background with the Android color 4282785821.

# Color Blindness Simulation

Color vision deficiency is a very complex topic, and I could not describe the different causes any better than Wikipedia does, so if you want to learn more, you should check out their [article about color blindness](#).

## Dichromacy



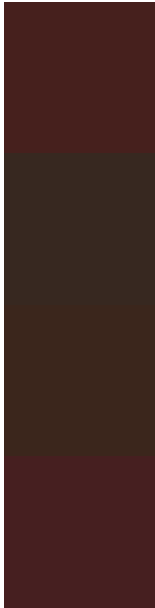
**Original Color**  
4282785821

**Protanopia**  
4281281570

**Deuteranopia**  
4281674267



# Trichromacy



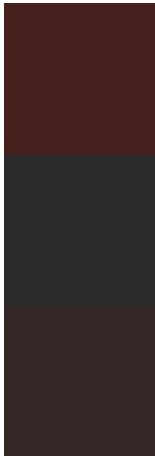
**Original Color**  
4282785821

**Protanomaly**  
4281804832

**Deuteranomaly**  
4282066460

**Tritanomaly**  
4282785568

# Monochromacy



**Original Color**  
4282785821

**Achromatopsia**  
4281019179

**Achromatomaly**  
4281673510

# CSS Examples

## Text

The CSS property to change the color of the text to Android 4282785821 is called "color". The color property can be set on classes, ids or directly on the HTML element.

This example shows how text in the color `rgb(70, 32, 29)` looks like.

```
.text, #text, p{  
    color:rgb(70, 32, 29)  
}
```

If you want to add a text shadow in that color use the text-shadow property, you can generate a text shadow directly with our [CSS Text Shadow Generator](#).

Here you see how black text with a 4 pixel rgb(70, 32, 29) colored shadow looks like.

```
.shadow{ text-shadow: 4px 4px 2px rgb(70, 32, 29) }
```

## Border

The CSS property to change the border of an element to Android 4282785821 is called "border". The border property can be set on classes, ids or directly on the HTML element.

This example shows the color as border, it can be applied via the CSS property "border" or "border-color".

```
.border, #border, table{ border:4px solid rgb(70, 32, 29) }
```

If only the border color should be changed use the property `border-color`.

```
.border{ border-color:rgb(70, 32, 29) }
```

If you want to add a box shadow in that color use:

Here you see how a box with a 4 pixel `rgb(70, 32, 29)` colored shadow looks like.

```
.boxshadow{ -moz-box-shadow:4px 4px 4px  
4px rgb(70, 32, 29); -webkit-box-  
shadow:4px 4px 4px 4px rgb(70, 32, 29);  
box-shadow:4px 4px 4px 4px rgb(70, 32, 29)  
}
```

# Background

The CSS property to change the background color of an element to Android 4282785821 is called "background". The background property can be set on classes, ids or directly on the HTML element.

```
.background, #background, body{  
background: rgb(70, 32, 29) }
```

If only the background color should be changed can be used:

```
.background{ background-color: rgb(70, 32,  
29) }
```

This example shows the color as background, it is applied via the CSS property "background".

To optimize and compress your CSS code, you can use our [online CSS compressor and optimizer](#) based on csstidy. If you want to create a linear or radial gradient as background or border, check our [CSS Gradient Generator](#).



# Hey! You found this booklet interesting? Support Converting Colors with the new Membership Option!

The pro membership hides all ads, plus gives you double the colors in the color bucket, and more awesome pro features!

**[Learn more, Memberships starting at \\$2.50/m!](#)**

**Follow me  
on Twitter!**

@ConvertingColor