

Converting Colors

Android(4282850334)

Have a look what the booklet for
Android(4282850334) contains.

Android(4282850334)	3
<i>Conversions</i>	4
<i>Details</i>	6
<i>Harmonies</i>	11
<i>Previews</i>	23
<i>Color Blindness Simulation</i>	26
<i>CSS Examples</i>	29

Color

Android(4282850334)

Conversions

Conversions Part 1

Format	Color
Hex	471C1E
RGB	71, 28, 30
RGB Percent	28%, 11%, 12%
CMY	0.7216, 0.8902, 0.8824
CMYK	0.00, 0.61, 0.58, 0.72
HSL	357°, 43%, 19%
HSV	357°, 61%, 28%
XYZ	3.2481, 2.2638, 1.4941
YIQ	41.0850, 24.9860, 9.7380

Conversions

Conversions Part 2

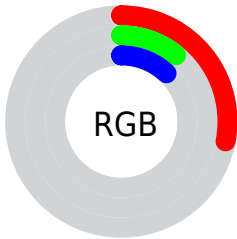
Format	Color
RYB	71, 28, 30
Decimal	4660254
CIELab	16.82, 20.81, 8.70
CIElCh	17, 22.556, 22.678
Yxy	2.2638, 0.4636, 0.3231
Android (android.graphics.Color)	4282850334 (0xFF471C1E)
YUV	41.0850, -5.4649, 26.2355
Hunter-Lab	15.0461, 12.2038, 4.6448

Details

The Android color **4282850334** is a dark color, and the websafe version is hex **330000**. A complement of this color would be **4280043333**, and the grayscale version is **4280887593**.

A 20% lighter version of the original color is **4286204234**, and **4279304192** is the 20% darker color. If you saturate the color by 10%, you get **4282848535**, and if you desaturate by 10%, it is **4282852133**.

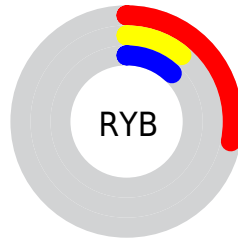
Distribution



Red (28%)

Green (11%)

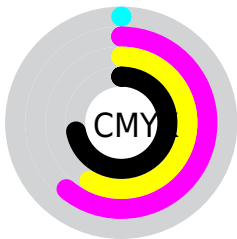
Blue (12%)



Red (28%)

Yellow (11%)

Blue (12%)

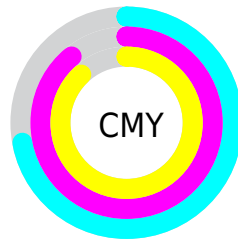


Cyan (0%)

Magenta (61%)

Yellow (58%)

Black (72%)



Cyan (72%)

Magenta (89%)

Yellow (88%)

Brightness & Saturation Gradients

These gradients show how the Android color 4282850334 changes by changing the brightness by 10 percent. The first figure shows a shift by +10% for each color and the second figure -10%.

Similar to the brightness gradients but the following saturation gradients show a change of the Android color 4282850334 by changing the saturation by 10% instead.



4282850334



4282850334

4294967295



4281337349



4286204234



4279304192



4287979873



4278190080



4289756026



4291597716



4293504942



4294953930



4294961126



4282850334



4282850334

■ 4282848535

■ 4282852133

■ 4282846736

■ 4282853932

■ 4282844938

■ 4282855730

■ 4282843139

■ 4282857529

■ 4282859584

■ 4282861383

■ 4282863181

■ 4282864980

■ 4282866779

Harmonies

Analogous

The Analogous color harmony consists of three colors that are next to each other on the color wheel.



4282719022



4282850334



4282458384

Triad

The Triadic color harmony groups three colors that are evenly spaced from another and form a triangle on the color wheel.



4282850334



4279382037



4278201417

Complementary

The Complementary color scheme is a pair of colors which are on the opposite of each other on the color wheel.



4282850334



4280043333

Split Complementary

Split-complementary colors differ from the complementary color scheme. The scheme consists of three colors, the original color and two neighbors of the complement color.



4278202435



4282850334



4278202661

Square

The Square scheme is like the rectangle color scheme, but the four colors are evenly spaced on the color wheel.



4282850334



4280757256



4278202677



4280493895

Rectangle

The Rectangle color scheme consists of four colors that form a rectangle on the color wheel.



4282850334



4282000647



4278202677



4278201928

Sweetspot

The Sweet Spot groups the original color and five complimentary colors.



4282850334



4284238668



4282719303



4281213988



4289572269



4281216558

Same Dimension

The Same Dimension uses a secret algorithm to generate beautiful new colors.



4282850334



4284225820



4282855196



4280557600



4284678149



4293066763

Inverse Universe

The Inverse Universe completely reimagines the original color for something new.



4282850334



4284225820



4280038471



4280557600



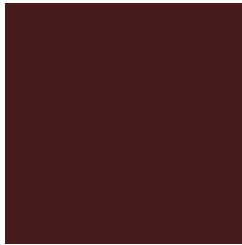
4284678149



4293066763

Previews

White Background



This preview shows how the Android color 4282850334 looks on a white background.

Color Contrast Check

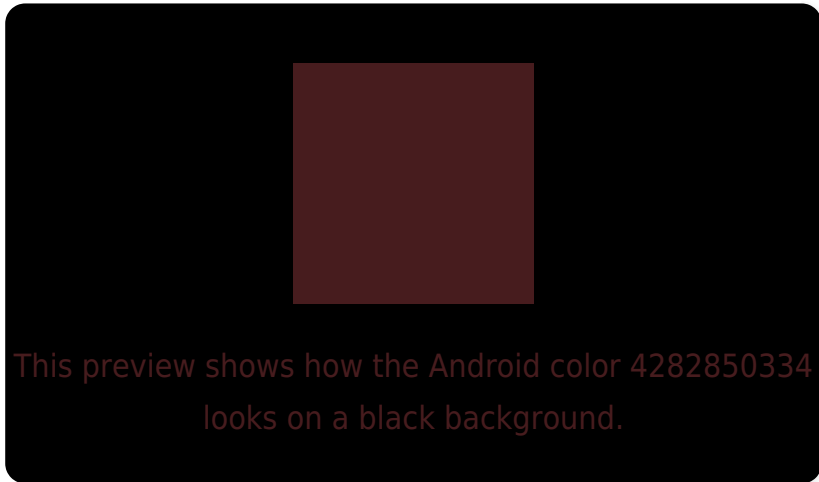
Large Text (above 18pt) WCAG AA ✓ Pass

Any Text WCAG AA ✓ Pass

Large Text (above 18pt) WCAG AAA ✓ Pass

Any Text WCAG AAA ✓ Pass

Black Background



Color Contrast Check

Large Text (above 18pt) WCAG AA × Fail

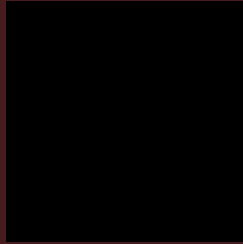
Any Text WCAG AA × Fail

Large Text (above 18pt) WCAG AAA × Fail

Any Text WCAG AAA × Fail

If you want to check with other color combinations, try the [Color Contrast Checker](#).

Android 4282850334 Background



This preview shows how black text looks on a background with the Android color 4282850334.



This preview shows how white text looks on a background with the Android color 4282850334.

Color Blindness Simulation

Color vision deficiency is a very complex topic, and I could not describe the different causes any better than Wikipedia does, so if you want to learn more, you should check out their [article about color blindness](#).

Dichromacy

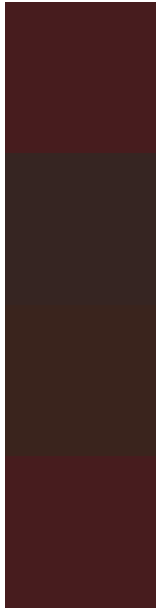


Original Color
4282850334

Protanopia
4281149988

Deuteranopia
4281542940

Trichromacy



Original Color

4282850334

Protanomaly

4281738530

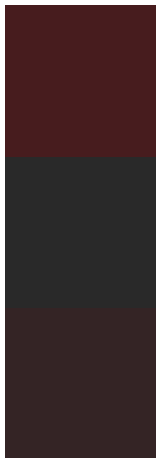
Deuteranomaly

4282000413

Tritanomaly

4282850334

Monochromacy



Original Color

4282850334

Achromatopsia

4280887593

Achromatomaly

4281607205

CSS Examples

Text

The CSS property to change the color of the text to Android 4282850334 is called "color". The color property can be set on classes, ids or directly on the HTML element.

This example shows how text in the color `rgb(71, 28, 30)` looks like.

```
.text, #text, p{  
    color:rgb(71, 28, 30)  
}
```

If you want to add a text shadow in that color use the text-shadow property, you can generate a text shadow directly with our [CSS Text Shadow Generator](#).

Here you see how black text with a 4 pixel rgb(71, 28, 30) colored shadow looks like.

```
.shadow{ text-shadow: 4px 4px 2px rgb(71, 28, 30) }
```

Border

The CSS property to change the border of an element to Android 4282850334 is called "border". The border property can be set on classes, ids or directly on the HTML element.

This example shows the color as border, it can be applied via the CSS property "border" or "border-color".

```
.border, #border, table{ border:4px solid rgb(71, 28, 30) }
```

If only the border color should be changed use the property `border-color`.

```
.border{ border-color:rgb(71, 28, 30) }
```

If you want to add a box shadow in that color use:

Here you see how a box with a 4 pixel `rgb(71, 28, 30)` colored shadow looks like.

```
.boxshadow{ -moz-box-shadow:4px 4px 4px  
4px rgb(71, 28, 30); -webkit-box-  
shadow:4px 4px 4px 4px rgb(71, 28, 30);  
box-shadow:4px 4px 4px 4px rgb(71, 28, 30)  
}
```

Background

The CSS property to change the background color of an element to Android 4282850334 is called "background". The background property can be set on classes, ids or directly on the HTML element.

```
.background, #background, body{  
background: rgb(71, 28, 30) }
```

If only the background color should be changed can be used:

```
.background{ background-color: rgb(71, 28,  
30) }
```

This example shows the color as background, it is applied via the CSS property "background".

To optimize and compress your CSS code, you can use our [online CSS compressor and optimizer](#) based on csstidy. If you want to create a linear or radial gradient as background or border, check our [CSS Gradient Generator](#).

Hey! You found this booklet interesting? Support Converting Colors with the new Membership Option!

The pro membership hides all ads, plus gives you double the colors in the color bucket, and more awesome pro features!

[Learn more, Memberships starting at \\$2.50/m!](#)

**Follow me
on Twitter!**

@ConvertingColor