

Converting Colors

Android(4282920491)

Have a look what the booklet for
Android(4282920491) contains.

Android(4282920491)	3
<i>Conversions</i>	4
<i>Details</i>	6
<i>Harmonies</i>	11
<i>Previews</i>	23
<i>Color Blindness Simulation</i>	26
<i>CSS Examples</i>	29

Color

Android(4282920491)

Conversions

Conversions Part 1

Format	Color
Hex	482E2B
RGB	72, 46, 43
RGB Percent	28%, 18%, 17%
CMY	0.7176, 0.8196, 0.8314
CMYK	0.00, 0.36, 0.40, 0.72
HSL	6°, 25%, 23%
HSV	6°, 40%, 28%
XYZ	4.0855, 3.5061, 2.7469
YIQ	53.4320, 16.4590, 4.5790

Conversions

Conversions Part 2

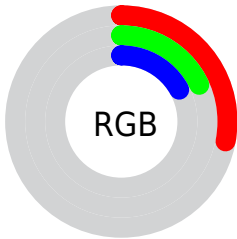
Format	Color
R_{YB}	72, 46, 43
Decimal	4730411
CIE _{Lab}	21.97, 11.50, 6.80
CIE _{LCh}	22, 13.361, 30.603
Yxy	3.5061, 0.3952, 0.3391
Android (android.graphics.Color)	4282920491 (0xFF482E2B)
YUV	53.4320, -5.1430, 16.2841
Hunter-Lab	18.7247, 6.1787, 4.4094

Details

The Android color **4282920491** is a dark color, and the websafe version is hex **663333**. A complement of this color would be **4281025864**, and the grayscale version is **4281677109**.

A 20% lighter version of the original color is **4286209112**, and **4280090624** is the 20% darker color. If you saturate the color by 10%, you get **4282918948**, and if you desaturate by 10%, it is **4282922034**.

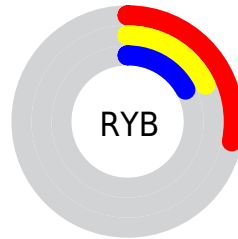
Distribution



Red (28%)

Green (18%)

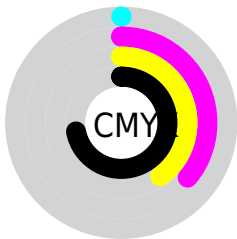
Blue (17%)



Red (28%)

Yellow (18%)

Blue (17%)

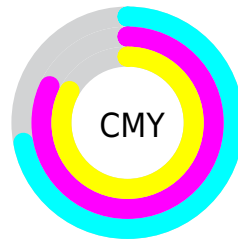


Cyan (0%)

Magenta (36%)

Yellow (40%)

Black (72%)



Cyan (72%)

Magenta (82%)

Yellow (83%)

Brightness & Saturation Gradients

These gradients show how the Android color 4282920491 changes by changing the brightness by 10 percent. The first figure shows a shift by +10% for each color and the second figure -10%.

Similar to the brightness gradients but the following saturation gradients show a change of the Android color 4282920491 by changing the saturation by 10% instead.



4282920491



4282920491

4294967295



4281407767



4286209112



4280090624



4287919473



4278190080



4289695370



4291471780



4293379264



4294959323



4294966776



4282920491



4282920491

■ 4282918948

■ 4282922034

■ 4282917149

■ 4282923833

■ 4282915605

■ 4282925377

■ 4282913806

■ 4282927176

■ 4282912263

■ 4282928719

■ 4282910464

■ 4282930518

■ 4282932061

■ 4282933861

■ 4282935404

Harmonies

Analogous

The Analogous color harmony consists of three colors that are next to each other on the color wheel.



4282854709



4282920491



4282659108

Triad

The Triadic color harmony groups three colors that are evenly spaced from another and form a triangle on the color wheel.



4282920491



4280629547



4280825160

Complementary

The Complementary color scheme is a pair of colors which are on the opposite of each other on the color wheel.



4282920491



4281025864

Split Complementary

Split-complementary colors differ from the complementary color scheme. The scheme consists of three colors, the original color and two neighbors of the complement color.



4279908422



4282920491



4279908916

Square

The Square scheme is like the rectangle color scheme, but the four colors are evenly spaced on the color wheel.



4282920491



4281415459



4279581246



4281741894

Rectangle

The Rectangle color scheme consists of four colors that form a rectangle on the color wheel.



4282920491



4282266401



4279581246



4280497736

Sweetspot

The Sweet Spot groups the original color and five complimentary colors.



4282920491



4284372051



4282919749



4281346602



4289769648



4281348144

Same Dimension

The Same Dimension uses a secret algorithm to generate beautiful new colors.



4282920491



4284364337



4282924075



4280557600



4284680704



4293072640

Inverse Universe

The Inverse Universe completely reimagines the original color for something new.



4281025864



4281424478



4281022280



4280296228



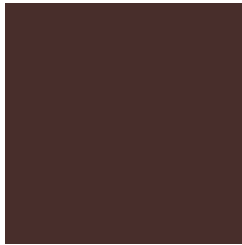
4278212963



4278242275

Previews

White Background



This preview shows how the Android color 4282920491 looks on a white background.

Color Contrast Check

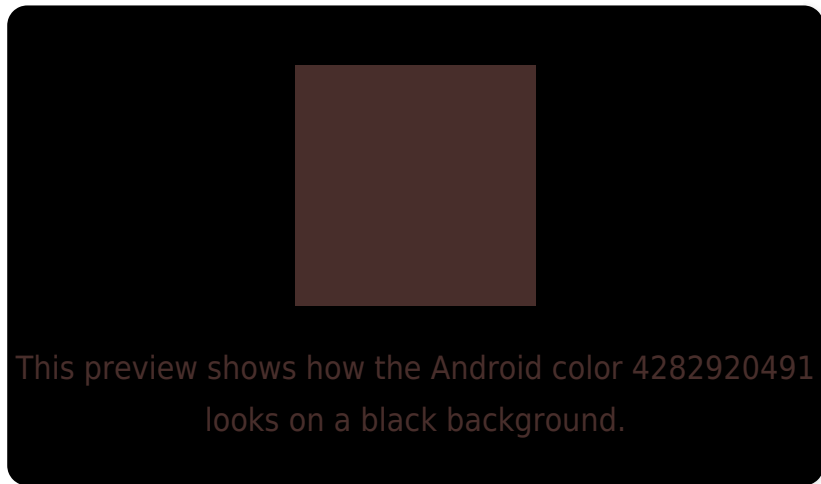
Large Text (above 18pt) WCAG AA ✓ Pass

Any Text WCAG AA ✓ Pass

Large Text (above 18pt) WCAG AAA ✓ Pass

Any Text WCAG AAA ✓ Pass

Black Background



Color Contrast Check

Large Text (above 18pt) WCAG AA × Fail

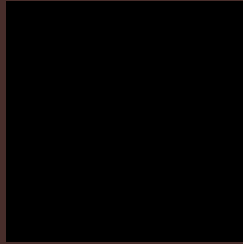
Any Text WCAG AA × Fail

Large Text (above 18pt) WCAG AAA × Fail

Any Text WCAG AAA × Fail

If you want to check with other color combinations, try the [Color Contrast Checker](#).

Android 4282920491 Background



This preview shows how black text looks on a background with the Android color 4282920491.

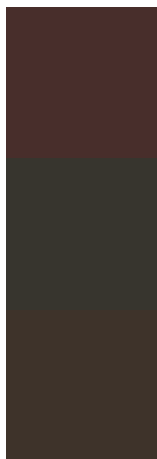


This preview shows how white text looks on a background with the Android color 4282920491.

Color Blindness Simulation

Color vision deficiency is a very complex topic, and I could not describe the different causes any better than Wikipedia does, so if you want to learn more, you should check out their [article about color blindness](#).

Dichromacy



Original Color

4282920491

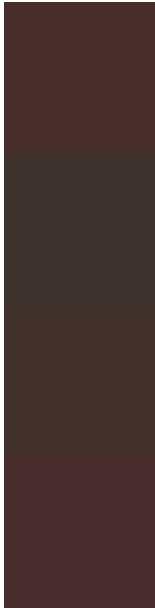
Protanopia

4281808174

Deuteranopia

4282266410

Trichromacy



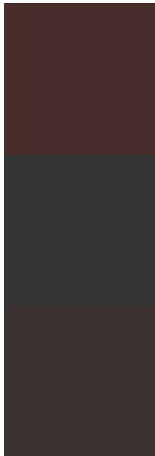
Original Color
4282920491

Protanomaly
4282200621

Deuteranomaly
4282528042

Tritanomaly
4282920239

Monochromacy



Original Color
4282920491

Achromatopsia
4281677109

Achromatomaly
4282135089

CSS Examples

Text

The CSS property to change the color of the text to Android 4282920491 is called "color". The color property can be set on classes, ids or directly on the HTML element.

This example shows how text in the color `rgb(72, 46, 43)` looks like.

```
.text, #text, p{  
    color:rgb(72, 46, 43)  
}
```

If you want to add a text shadow in that color use the text-shadow property, you can generate a text shadow directly with our [CSS Text Shadow Generator](#).

Here you see how black text with a 4 pixel rgb(72, 46, 43) colored shadow looks like.

```
.shadow{ text-shadow: 4px 4px 2px rgb(72, 46, 43) }
```

Border

The CSS property to change the border of an element to Android 4282920491 is called "border". The border property can be set on classes, ids or directly on the HTML element.

This example shows the color as border, it can be applied via the CSS property "border" or "border-color".

```
.border, #border, table{ border:4px solid rgb(72, 46, 43) }
```

If only the border color should be changed use the property `border-color`.

```
.border{ border-color:rgb(72, 46, 43) }
```

If you want to add a box shadow in that color use:

Here you see how a box with a 4 pixel `rgb(72, 46, 43)` colored shadow looks like.

```
.boxshadow{ -moz-box-shadow:4px 4px 4px  
4px rgb(72, 46, 43); -webkit-box-  
shadow:4px 4px 4px 4px rgb(72, 46, 43);  
box-shadow:4px 4px 4px 4px rgb(72, 46, 43)  
}
```

Background

The CSS property to change the background color of an element to Android 4282920491 is called "background". The background property can be set on classes, ids or directly on the HTML element.

```
.background, #background, body{  
background: rgb(72, 46, 43) }
```

If only the background color should be changed can be used:

```
.background{ background-color: rgb(72, 46,  
43) }
```

This example shows the color as background, it is applied via the CSS property "background".

To optimize and compress your CSS code, you can use our [online CSS compressor and optimizer](#) based on csstidy. If you want to create a linear or radial gradient as background or border, check our [CSS Gradient Generator](#).

Hey! You found this booklet interesting? Support Converting Colors with the new Membership Option!

The pro membership hides all ads, plus gives you double the colors in the color bucket, and more awesome pro features!

[Learn more, Memberships starting at \\$2.50/m!](#)

**Follow me
on Twitter!**

@ConvertingColor