

Converting Colors

Android(4282923310)

Have a look what the booklet for
Android(4282923310) contains.

| | |
|--|----|
| Android(4282923310) | 3 |
| <i>Conversions</i> | 4 |
| <i>Details</i> | 6 |
| <i>Harmonies</i> | 11 |
| <i>Previews</i> | 23 |
| <i>Color Blindness Simulation</i> | 26 |
| <i>CSS Examples</i> | 29 |

Color

Android(4282923310)

Conversions

Conversions Part 1

| Format | Color |
|-------------|---------------------------|
| Hex | 48392E |
| RGB | 72, 57, 46 |
| RGB Percent | 28%, 22%, 18% |
| CMY | 0.7176, 0.7765, 0.8196 |
| CMYK | 0.00, 0.21, 0.36, 0.72 |
| HSL | 25°, 22%, 23% |
| HSV | 25°, 36%, 28% |
| XYZ | 4.6288, 4.5012, 3.2096 |
| YIQ | 60.2310, 12.4710, -0.2410 |

Conversions

Conversions Part 2

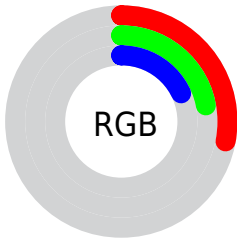
| Format | Color |
|-------------------------------------|------------------------------|
| R_YB | 72, 65, 46 |
| Decimal | 4733230 |
| CIE Lab | 25.26, 4.73, 9.36 |
| CIE LCh | 25, 10.489, 63.197 |
| Yxy | 4.5012, 0.3751, 0.3648 |
| Android (android.graphics.Color) | 4282923310 (0xFF48392E) |
| YUV | 60.2310, -7.0159, 10.3214 |
| Hunter-Lab | 21.2161, 1.8155, 5.8817 |

Details

The Android color **4282923310** is a dark color, and the websafe version is hex **333333**. A complement of this color would be **4281220424**, and the grayscale version is **4282137660**.

A 20% lighter version of the original color is **4286146652**, and **4280159744** is the 20% darker color. If you saturate the color by 10%, you get **4282922279**, and if you desaturate by 10%, it is **4282924341**.

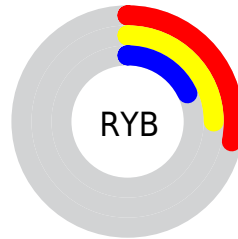
Distribution



Red (28%)

Green (22%)

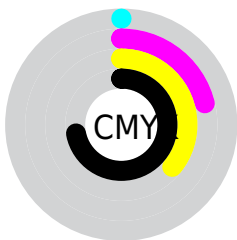
Blue (18%)



Red (28%)

Yellow (25%)

Blue (18%)

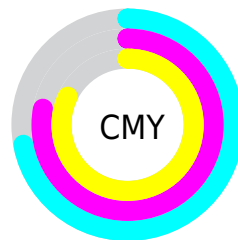


Cyan (0%)

Magenta (21%)

Yellow (36%)

Black (72%)



Cyan (72%)

Magenta (78%)

Yellow (82%)

Brightness & Saturation Gradients

These gradients show how the Android color 4282923310 changes by changing the brightness by 10 percent. The first figure shows a shift by +10% for each color and the second figure -10%.

Similar to the brightness gradients but the following saturation gradients show a change of the Android color 4282923310 by changing the saturation by 10% instead.



4282923310



4282923310

4294967295



4281410585



4286146652



4280159744



4287857012



4278190080



4289633166



4291409576



4293317060



4294962912



4294967292



4282923310



4282923310

■ 4282922279

■ 4282924341

■ 4282921248

■ 4282925372

■ 4282920216

■ 4282926404

■ 4282918929

■ 4282927691

■ 4282917898

■ 4282928722

■ 4282916867

■ 4282929753

■ 4282916352

■ 4282930784

■ 4282931816

■ 4282932847

Harmonies

Analogous

The Analogous color harmony consists of three colors that are next to each other on the color wheel.



4283184948



4282923310



4282465324

Triad

The Triadic color harmony groups three colors that are evenly spaced from another and form a triangle on the color wheel.



4282923310



4280827964



4282268233

Complementary

The Complementary color scheme is a pair of colors which are on the opposite of each other on the color wheel.



4282923310



4281220424

Split Complementary

Split-complementary colors differ from the complementary color scheme. The scheme consists of three colors, the original color and two neighbors of the complement color.



4281613388



4282923310



4280696900

Square

The Square scheme is like the rectangle color scheme, but the four colors are evenly spaced on the color wheel.



4282923310



4281286709



4280958794



4282857283

Rectangle

The Rectangle color scheme consists of four colors that form a rectangle on the color wheel.



4282923310



4282072365



4280958794



4282071626

Sweetspot

The Sweet Spot groups the original color and five complimentary colors.



4282923310



4284373076



4282920509



4281347370



4289769648



4281348144

Same Dimension

The Same Dimension uses a secret algorithm to generate beautiful new colors.



4282923310



4284368694



4282926638



4280558112



4284688896



4293091328

Inverse Universe

The Inverse Universe completely reimagines the original color for something new.



4281220424



4281748830



4281217096



4280295972



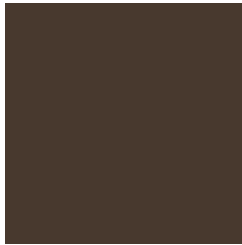
4278204771



4278223843

Previews

White Background



This preview shows how the Android color 4282923310 looks on a white background.

Color Contrast Check

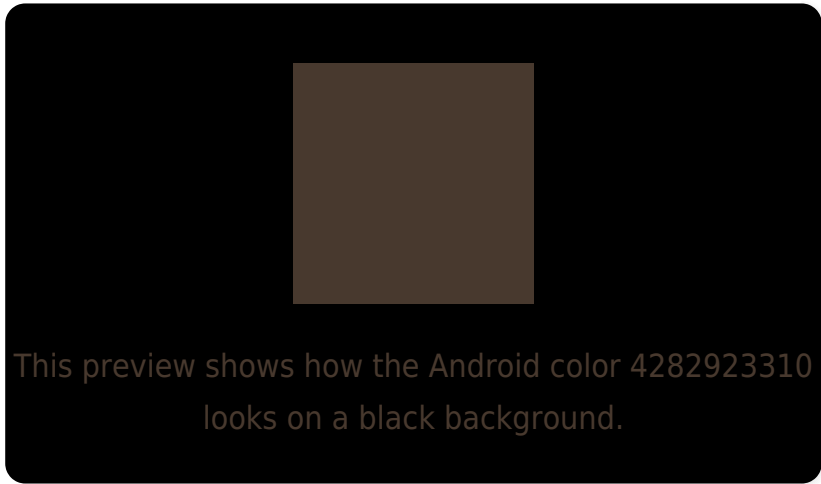
Large Text (above 18pt) WCAG AA ✓ Pass

Any Text WCAG AA ✓ Pass

Large Text (above 18pt) WCAG AAA ✓ Pass

Any Text WCAG AAA ✓ Pass

Black Background



Color Contrast Check

Large Text (above 18pt) WCAG AA × Fail

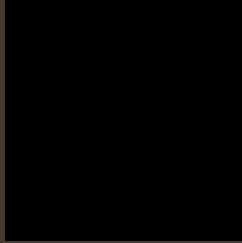
Any Text WCAG AA × Fail

Large Text (above 18pt) WCAG AAA × Fail

Any Text WCAG AAA × Fail

If you want to check with other color combinations, try the [Color Contrast Checker](#).

Android 4282923310 Background



This preview shows how black text looks on a background with the Android color 4282923310.

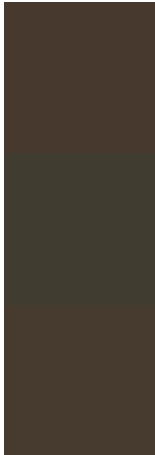


This preview shows how white text looks on a background with the Android color 4282923310.

Color Blindness Simulation

Color vision deficiency is a very complex topic, and I could not describe the different causes any better than Wikipedia does, so if you want to learn more, you should check out their [article about color blindness](#).

Dichromacy

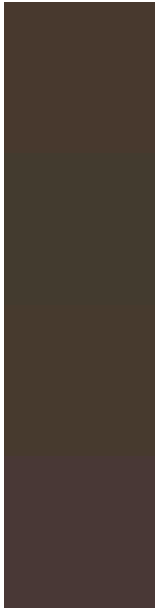


Original Color
4282923310

Protanopia
4282399791

Deuteranopia
4282858030

Trichromacy



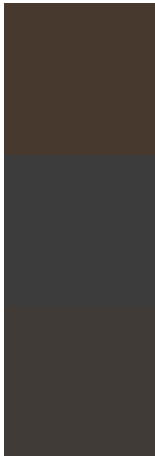
Original Color
4282923310

Protanomaly
4282596143

Deuteranomaly
4282858030

Tritanomaly
4282988598

Monochromacy



Original Color
4282923310

Achromatopsia
4282137660

Achromatomaly
4282399543

CSS Examples

Text

The CSS property to change the color of the text to Android 4282923310 is called "color". The color property can be set on classes, ids or directly on the HTML element.

This example shows how text in the color `rgb(72, 57, 46)` looks like.

```
.text, #text, p{  
    color:rgb(72, 57, 46)  
}
```

If you want to add a text shadow in that color use the text-shadow property, you can generate a text shadow directly with our [CSS Text Shadow Generator](#).

Here you see how black text with a 4 pixel rgb(72, 57, 46) colored shadow looks like.

```
.shadow{ text-shadow: 4px 4px 2px rgb(72, 57, 46) }
```

Border

The CSS property to change the border of an element to Android 4282923310 is called "border". The border property can be set on classes, ids or directly on the HTML element.

This example shows the color as border, it can be applied via the CSS property "border" or "border-color".

```
.border, #border, table{ border:4px solid rgb(72, 57, 46) }
```

If only the border color should be changed use the property border-color.

```
.border{ border-color:rgb(72, 57, 46) }
```

If you want to add a box shadow in that color use:

Here you see how a box with a 4 pixel rgb(72, 57, 46) colored shadow looks like.

```
.boxshadow{ -moz-box-shadow:4px 4px 4px  
4px rgb(72, 57, 46); -webkit-box-  
shadow:4px 4px 4px 4px rgb(72, 57, 46);  
box-shadow:4px 4px 4px 4px rgb(72, 57, 46)  
}
```

Background

The CSS property to change the background color of an element to Android 4282923310 is called "background". The background property can be set on classes, ids or directly on the HTML element.

```
.background, #background, body{  
background: rgb(72, 57, 46) }
```

If only the background color should be changed can be used:

```
.background{ background-color: rgb(72, 57,  
46) }
```

This example shows the color as background, it is applied via the CSS property "background".

To optimize and compress your CSS code, you can use our [online CSS compressor and optimizer](#) based on csstidy. If you want to create a linear or radial gradient as background or border, check our [CSS Gradient Generator](#).

Hey! You found this booklet interesting? Support Converting Colors with the new Membership Option!

The pro membership hides all ads, plus gives you double the colors in the color bucket, and more awesome pro features!

[Learn more, Memberships starting at \\$2.50/m!](#)

**Follow me
on Twitter!**

@ConvertingColor