

Converting Colors

Android(4282982173)

Have a look what the booklet for
Android(4282982173) contains.

Android(4282982173)	3
<i>Conversions</i>	4
<i>Details</i>	6
<i>Harmonies</i>	11
<i>Previews</i>	23
<i>Color Blindness Simulation</i>	26
<i>CSS Examples</i>	29

Color

Android(4282982173)

Conversions

Conversions Part 1

Format	Color
Hex	491F1D
RGB	73, 31, 29
RGB Percent	29%, 12%, 11%
CMY	0.7137, 0.8784, 0.8863
CMYK	0.00, 0.58, 0.60, 0.71
HSL	3°, 43%, 20%
HSV	3°, 60%, 29%
XYZ	3.4594, 2.4851, 1.4597
YIQ	43.3300, 25.6740, 8.2820

Conversions

Conversions Part 2

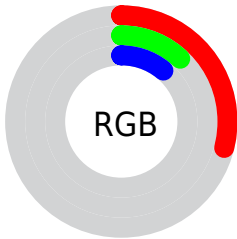
Format	Color
R_{YB}	73, 31, 29
Decimal	4792093
CIE Lab	17.85, 19.79, 10.85
CIE LCh	18, 22.570, 28.739
Yxy	2.4851, 0.4672, 0.3356
Android (android.graphics.Color)	4282982173 (0xFF491F1D)
YUV	43.3300, -7.0647, 26.0206
Hunter-Lab	15.7644, 11.5833, 5.5449

Details

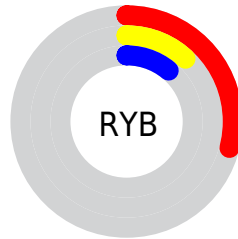
The Android color **4282982173** is a dark color, and the websafe version is hex **663333**. A complement of this color would be **4280108873**, and the grayscale version is **4281019179**.

A 20% lighter version of the original color is **4286336072**, and **4279697408** is the 20% darker color. If you saturate the color by 10%, you get **4282980374**, and if you desaturate by 10%, it is **4282983972**.

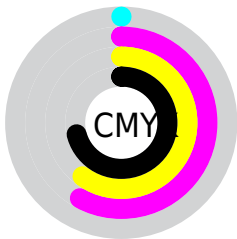
Distribution



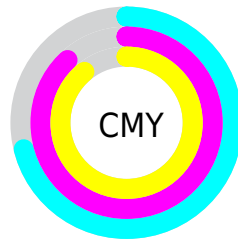
- Red (29%)
- Green (12%)
- Blue (11%)



- Red (29%)
- Yellow (12%)
- Blue (11%)



- Cyan (0%)
- Magenta (58%)
- Yellow (60%)
- Black (71%)



- Cyan (71%)
- Magenta (88%)
- Yellow (89%)

Brightness & Saturation Gradients

These gradients show how the Android color 4282982173 changes by changing the brightness by 10 percent. The first figure shows a shift by +10% for each color and the second figure -10%.

Similar to the brightness gradients but the following saturation gradients show a change of the Android color 4282982173 by changing the saturation by 10% instead.

 4282982173

 4282982173

4294967295

 4281403651


 4286336072

 4279697408

 4288111968

 4278190080

 4289953401

 4291795091

 4293702573

 4294954697

 4294962149

 4282982173

 4282982173

■ 4282980374

■ 4282983972

■ 4282978574

■ 4282985772

■ 4282976775

■ 4282987571

■ 4282974976

■ 4282989370

■ 4282991170

■ 4282992969

■ 4282994768

■ 4282996567

■ 4282998367

Harmonies

Analogous

The Analogous color harmony consists of three colors that are next to each other on the color wheel.



4282981677



4282982173



4282524944

Triad

The Triadic color harmony groups three colors that are evenly spaced from another and form a triangle on the color wheel.



4282982173



4279185946



4278529612

Complementary

The Complementary color scheme is a pair of colors which are on the opposite of each other on the color wheel.



4282982173



4280108873

Split Complementary

Split-complementary colors differ from the complementary color scheme. The scheme consists of three colors, the original color and two neighbors of the complement color.



4278202951



4282982173



4278203434

Square

The Square scheme is like the rectangle color scheme, but the four colors are evenly spaced on the color wheel.



4282982173



4280626957



4278203195



4281018440

Rectangle

The Rectangle color scheme consists of four colors that form a rectangle on the color wheel.



4282982173



4282001673



4278203195



4278202187

Sweetspot

The Sweet Spot groups the original color and five complimentary colors.



4282982173



4284370509



4282981704



4281345574



4289769648



4281348144

Same Dimension

The Same Dimension uses a secret algorithm to generate beautiful new colors.



4282982173



4284358170



4282987549



4280557600



4284679424



4293069312

Inverse Universe

The Inverse Universe completely reimagines the original color for something new.



4280108873



4279917406



4280103497



4280296484



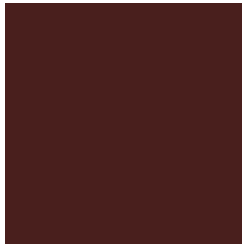
4278214499



4278245859

Previews

White Background



This preview shows how the Android color 4282982173 looks on a white background.

Color Contrast Check

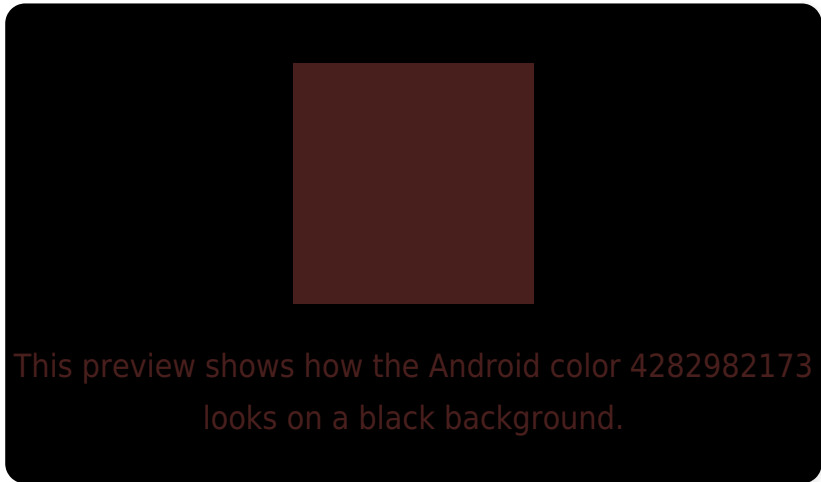
Large Text (above 18pt) WCAG AA ✓ Pass

Any Text WCAG AA ✓ Pass

Large Text (above 18pt) WCAG AAA ✓ Pass

Any Text WCAG AAA ✓ Pass

Black Background



Color Contrast Check

Large Text (above 18pt) WCAG AA × Fail

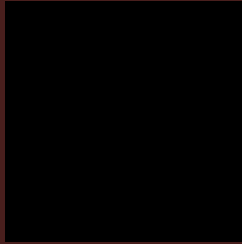
Any Text WCAG AA × Fail

Large Text (above 18pt) WCAG AAA × Fail

Any Text WCAG AAA × Fail

If you want to check with other color combinations, try the [Color Contrast Checker](#).

Android 4282982173 Background



This preview shows how black text looks on a background with the Android color 4282982173.



This preview shows how white text looks on a background with the Android color 4282982173.

Color Blindness Simulation

Color vision deficiency is a very complex topic, and I could not describe the different causes any better than Wikipedia does, so if you want to learn more, you should check out their [article about color blindness](#).

Dichromacy



Original Color

4282982173

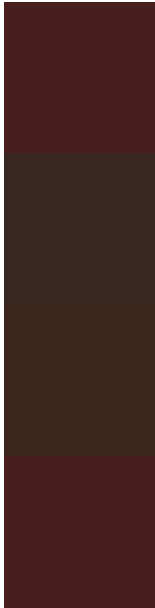
Protanopia

4281347363

Deuteranopia

4281740059

Trichromacy



Original Color

4282982173

Protanomaly

4281935905

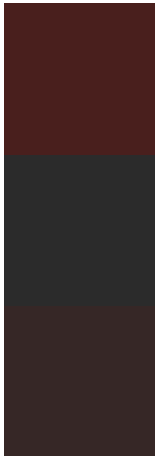
Deuteranomaly

4282197788

Tritanomaly

4282981919

Monochromacy



Original Color

4282982173

Achromatopsia

4281019179

Achromatomaly

4281739046

CSS Examples

Text

The CSS property to change the color of the text to Android 4282982173 is called "color". The color property can be set on classes, ids or directly on the HTML element.

This example shows how text in the color `rgb(73, 31, 29)` looks like.

```
.text, #text, p{  
    color:rgb(73, 31, 29)  
}
```

If you want to add a text shadow in that color use the text-shadow property, you can generate a text shadow directly with our [CSS Text Shadow Generator](#).

Here you see how black text with a 4 pixel rgb(73, 31, 29) colored shadow looks like.

```
.shadow{ text-shadow: 4px 4px 2px rgb(73, 31, 29) }
```

Border

The CSS property to change the border of an element to Android 4282982173 is called "border". The border property can be set on classes, ids or directly on the HTML element.

This example shows the color as border, it can be applied via the CSS property "border" or "border-color".

```
.border, #border, table{ border:4px solid rgb(73, 31, 29) }
```

If only the border color should be changed use the property border-color.

```
.border{ border-color:rgb(73, 31, 29) }
```

If you want to add a box shadow in that color use:

Here you see how a box with a 4 pixel rgb(73, 31, 29) colored shadow looks like.

```
.boxshadow{ -moz-box-shadow:4px 4px 4px  
4px rgb(73, 31, 29); -webkit-box-  
shadow:4px 4px 4px 4px rgb(73, 31, 29);  
box-shadow:4px 4px 4px 4px rgb(73, 31, 29)  
}
```

Background

The CSS property to change the background color of an element to Android 4282982173 is called "background". The background property can be set on classes, ids or directly on the HTML element.

```
.background, #background, body{  
background: rgb(73, 31, 29) }
```

If only the background color should be changed can be used:

```
.background{ background-color: rgb(73, 31,  
29) }
```

This example shows the color as background, it is applied via the CSS property "background".

To optimize and compress your CSS code, you can use our [online CSS compressor and optimizer](#) based on csstidy. If you want to create a linear or radial gradient as background or border, check our [CSS Gradient Generator](#).

Hey! You found this booklet interesting? Support Converting Colors with the new Membership Option!

The pro membership hides all ads, plus gives you double the colors in the color bucket, and more awesome pro features!

[Learn more, Memberships starting at \\$2.50/m!](#)

**Follow me
on Twitter!**

@ConvertingColor