

Converting Colors

Android(4282983188)

Have a look what the booklet for
Android(4282983188) contains.

Android(4282983188)	3
<i>Conversions</i>	4
<i>Details</i>	6
<i>Harmonies</i>	11
<i>Previews</i>	23
<i>Color Blindness Simulation</i>	26
<i>CSS Examples</i>	29

Color

Android(4282983188)

Conversions

Conversions Part 1

Format	Color
Hex	492314
RGB	73, 35, 20
RGB Percent	29%, 14%, 8%
CMY	0.7137, 0.8627, 0.9216
CMYK	0.00, 0.52, 0.73, 0.71
HSL	17°, 57%, 18%
HSV	17°, 73%, 29%
XYZ	3.4750, 2.6690, 0.9938
YIQ	44.6520, 27.4630, 3.3910

Conversions

Conversions Part 2

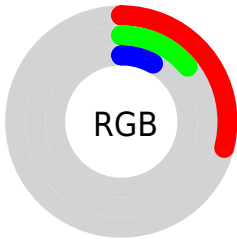
Format	Color
RYB	73, 41, 20
Decimal	4793108
CIELab	18.67, 16.52, 17.97
CIElCh	19, 24.414, 47.404
Yxy	2.6690, 0.4868, 0.3739
Android (android.graphics.Color)	4282983188 (0xFF492314)
YUV	44.6520, -12.1534, 24.8612
Hunter-Lab	16.3372, 9.3772, 7.8292

Details

The Android color **4282983188** is a dark color, and the websafe version is hex **663333**. A complement of this color would be **4279515721**, and the grayscale version is **4281150765**.

A 20% lighter version of the original color is **4286402623**, and **4279697408** is the 20% darker color. If you saturate the color by 10%, you get **4282981901**, and if you desaturate by 10%, it is **4282984475**.

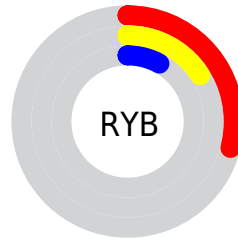
Distribution



Red (29%)

Green (14%)

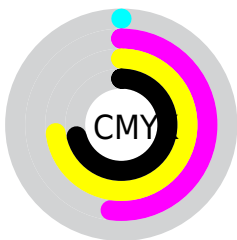
Blue (8%)



Red (29%)

Yellow (16%)

Blue (8%)

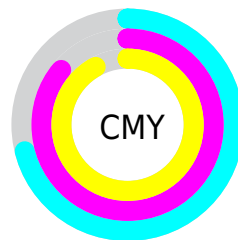


Cyan (0%)

Magenta (52%)

Yellow (73%)

Black (71%)



Cyan (71%)

Magenta (86%)

Yellow (92%)

Brightness & Saturation Gradients

These gradients show how the Android color 4282983188 changes by changing the brightness by 10 percent. The first figure shows a shift by +10% for each color and the second figure -10%.

Similar to the brightness gradients but the following saturation gradients show a change of the Android color 4282983188 by changing the saturation by 10% instead.

 4282983188

 4282983188

 4294967286

 4281404928

 4286402623

 4279697408

 4288178518

 4278190080

 4289954415

 4291861640

 4293703586

 4294955965

 4294963161

 4282983188

 4282983188

■ 4282981901

■ 4282984475

■ 4282980613

■ 4282985763

■ 4282979584

■ 4282987306

■ 4282988593

■ 4282989881

■ 4282991168

■ 4282992711

■ 4282993998

■ 4282995286

Harmonies

Analogous

The Analogous color harmony consists of three colors that are next to each other on the color wheel.



4283309604



4282983188



4282198536

Triad

The Triadic color harmony groups three colors that are evenly spaced from another and form a triangle on the color wheel.



4282983188



4278203941



4280364111

Complementary

The Complementary color scheme is a pair of colors which are on the opposite of each other on the color wheel.



4282983188



4279515721

Split Complementary

Split-complementary colors differ from the complementary color scheme. The scheme consists of three colors, the original color and two neighbors of the complement color.



4278202960



4282983188



4278203959

Square

The Square scheme is like the rectangle color scheme, but the four colors are evenly spaced on the color wheel.



4282983188



4279841812



4278203719



4282065990

Rectangle

The Rectangle color scheme consists of four colors that form a rectangle on the color wheel.



4282983188



4281544198



4278203719



4279447121

Sweetspot

The Sweet Spot groups the original color and five complimentary colors.



4282983188



4284370762



4282979387



4281345828



4289769648



4281348144

Same Dimension

The Same Dimension uses a secret algorithm to generate beautiful new colors.



4282983188



4284359436



4282989844



4280557856



4284685312



4293083136

Inverse Universe

The Inverse Universe completely reimagines the original color for something new.



4279515721



4278994782



4279509065



4280296228



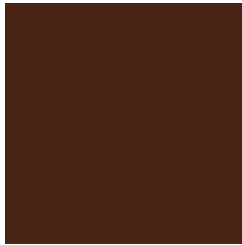
4278208355



4278232035

Previews

White Background



This preview shows how the Android color 4282983188 looks on a white background.

Color Contrast Check

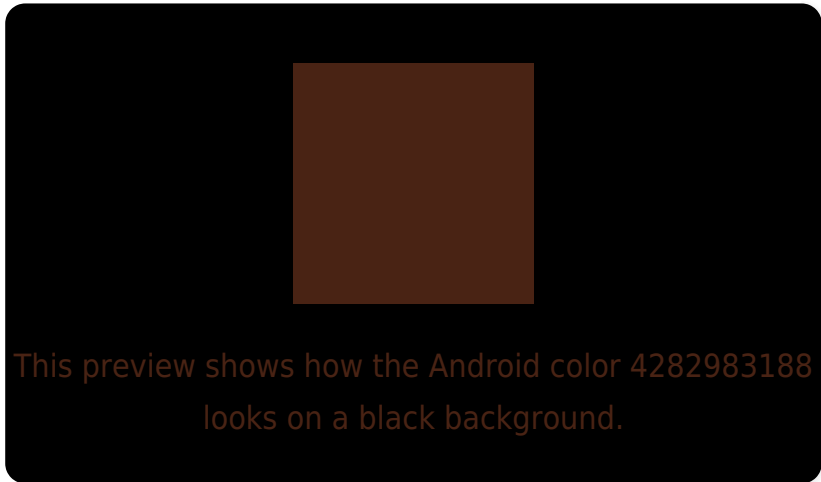
Large Text (above 18pt) WCAG AA ✓ Pass

Any Text WCAG AA ✓ Pass

Large Text (above 18pt) WCAG AAA ✓ Pass

Any Text WCAG AAA ✓ Pass

Black Background



Color Contrast Check

Large Text (above 18pt) WCAG AA × Fail

Any Text WCAG AA × Fail

Large Text (above 18pt) WCAG AAA × Fail

Any Text WCAG AAA × Fail

If you want to check with other color combinations, try the [Color Contrast Checker](#).

Android 4282983188 Background



This preview shows how black text looks on a background with the Android color 4282983188.

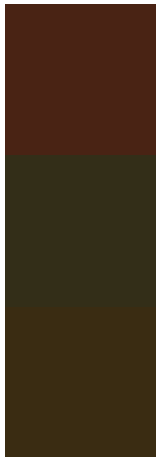


This preview shows how white text looks on a background with the Android color 4282983188.

Color Blindness Simulation

Color vision deficiency is a very complex topic, and I could not describe the different causes any better than Wikipedia does, so if you want to learn more, you should check out their [article about color blindness](#).

Dichromacy

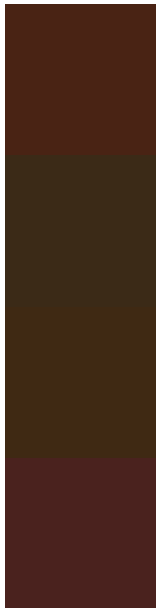


Original Color
4282983188

Protanopia
4281544216

Deuteranopia
4282002450

Trichromacy



Original Color

4282983188

Protanomaly

4282067479

Deuteranomaly

4282329363

Tritanomaly

4283048478

Monochromacy



Original Color

4282983188

Achromatopsia

4281150765

Achromatomaly

4281805092

CSS Examples

Text

The CSS property to change the color of the text to Android 4282983188 is called "color". The color property can be set on classes, ids or directly on the HTML element.

This example shows how text in the color `rgb(73, 35, 20)` looks like.

```
.text, #text, p{  
    color:rgb(73, 35, 20)  
}
```

If you want to add a text shadow in that color use the text-shadow property, you can generate a text shadow directly with our [CSS Text Shadow Generator](#).

Here you see how black text with a 4 pixel rgb(73, 35, 20) colored shadow looks like.

```
.shadow{ text-shadow: 4px 4px 2px rgb(73, 35, 20) }
```

Border

The CSS property to change the border of an element to Android 4282983188 is called "border". The border property can be set on classes, ids or directly on the HTML element.

This example shows the color as border, it can be applied via the CSS property "border" or "border-color".

```
.border, #border, table{ border:4px solid rgb(73, 35, 20) }
```

If only the border color should be changed use the property `border-color`.

```
.border{ border-color:rgb(73, 35, 20) }
```

If you want to add a box shadow in that color use:

Here you see how a box with a 4 pixel `rgb(73, 35, 20)` colored shadow looks like.

```
.boxshadow{ -moz-box-shadow:4px 4px 4px  
4px rgb(73, 35, 20); -webkit-box-  
shadow:4px 4px 4px 4px rgb(73, 35, 20);  
box-shadow:4px 4px 4px 4px rgb(73, 35, 20)  
}
```

Background

The CSS property to change the background color of an element to Android 4282983188 is called "background". The background property can be set on classes, ids or directly on the HTML element.

```
.background, #background, body{  
background: rgb(73, 35, 20) }
```

If only the background color should be changed can be used:

```
.background{ background-color: rgb(73, 35,  
20) }
```

This example shows the color as background, it is applied via the CSS property "background".

To optimize and compress your CSS code, you can use our [online CSS compressor and optimizer](#) based on csstidy. If you want to create a linear or radial gradient as background or border, check our [CSS Gradient Generator](#).

Hey! You found this booklet interesting? Support Converting Colors with the new Membership Option!

The pro membership hides all ads, plus gives you double the colors in the color bucket, and more awesome pro features!

[Learn more, Memberships starting at \\$2.50/m!](#)

**Follow me
on Twitter!**

@ConvertingColor