

Converting Colors

Android(4282983210)

Have a look what the booklet for
Android(4282983210) contains.

Android(4282983210)	3
<i>Conversions</i>	4
<i>Details</i>	6
<i>Harmonies</i>	11
<i>Previews</i>	23
<i>Color Blindness Simulation</i>	26
<i>CSS Examples</i>	29

Color

Android(4282983210)

Conversions

Conversions Part 1

Format	Color
Hex	49232A
RGB	73, 35, 42
RGB Percent	29%, 14%, 16%
CMY	0.7137, 0.8627, 0.8353
CMYK	0.00, 0.52, 0.42, 0.71
HSL	349°, 35%, 21%
HSV	349°, 52%, 29%
XYZ	3.7666, 2.7857, 2.5297
YIQ	47.1600, 20.4010, 10.2330

Conversions

Conversions Part 2

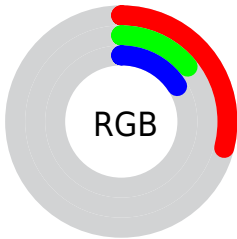
Format	Color
R_{YB}	73, 35, 42
Decimal	4793130
CIE _{Lab}	19.16, 18.90, 3.56
CIE _{LCh}	19, 19.229, 10.668
Yxy	2.7857, 0.4147, 0.3067
Android (android.graphics.Color)	4282983210 (0xFF49232A)
YUV	47.1600, -2.5439, 22.6617
Hunter-Lab	16.6904, 11.0747, 2.6971

Details

The Android color **4282983210** is a dark color, and the websafe version is hex **663333**. A complement of this color would be **4280502594**, and the grayscale version is **4281282351**.

A 20% lighter version of the original color is **4286271831**, and **4280090625** is the 20% darker color. If you saturate the color by 10%, you get **4282981412**, and if you desaturate by 10%, it is **4282985008**.

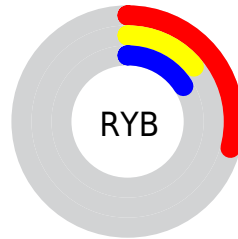
Distribution



Red (29%)

Green (14%)

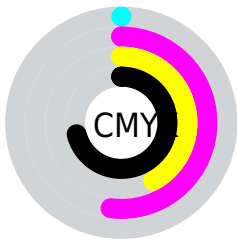
Blue (16%)



Red (29%)

Yellow (14%)

Blue (16%)

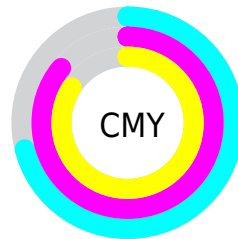


Cyan (0%)

Magenta (52%)

Yellow (42%)

Black (71%)



Cyan (71%)

Magenta (86%)

Yellow (84%)

Brightness & Saturation Gradients

These gradients show how the Android color 4282983210 changes by changing the brightness by 10 percent. The first figure shows a shift by +10% for each color and the second figure -10%.

Similar to the brightness gradients but the following saturation gradients show a change of the Android color 4282983210 by changing the saturation by 10% instead.



4282983210



4282983210

4294967295



4281404950



4286271831



4280090625



4288047471



4278190080



4289823369



4291665315



4293507262



4294955994



4294963446



4282983210



4282983210

■ 4282981412

■ 4282985008

■ 4282979358

■ 4282987062

■ 4282977560

■ 4282988860

■ 4282975762

■ 4282990658

■ 4282974221

■ 4282992712

■ 4282994510

■ 4282996308

■ 4282998106

■ 4283000160

Harmonies

Analogous

The Analogous color harmony consists of three colors that are next to each other on the color wheel.



4282655800



4282983210



4282852893

Triad

The Triadic color harmony groups three colors that are evenly spaced from another and form a triangle on the color wheel.



4282983210



4280496921



4278202953

Complementary

The Complementary color scheme is a pair of colors which are on the opposite of each other on the color wheel.



4282983210



4280502594

Split Complementary

Split-complementary colors differ from the complementary color scheme. The scheme consists of three colors, the original color and two neighbors of the complement color.



4278203712



4282983210



4279186725

Square

The Square scheme is like the rectangle color scheme, but the four colors are evenly spaced on the color wheel.



4282983210



4281478930



4278203955



4280364618

Rectangle

The Rectangle color scheme consists of four colors that form a rectangle on the color wheel.



4282983210



4282525974



4278203955



4278203207

Sweetspot

The Sweet Spot groups the original color and five complimentary colors.



4282983210



4284370770



4282458953



4281345833



4289769648



4281348144

Same Dimension

The Same Dimension uses a secret algorithm to generate beautiful new colors.



4282983210



4284359727



4282986019



4280557601



4284678162



4293066794

Inverse Universe

The Inverse Universe completely reimagines the original color for something new.



4282983210



4284359727



4280499785



4280557601



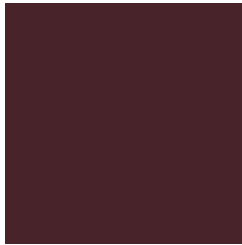
4284678162



4293066794

Previews

White Background



This preview shows how the Android color 4282983210 looks on a white background.

Color Contrast Check

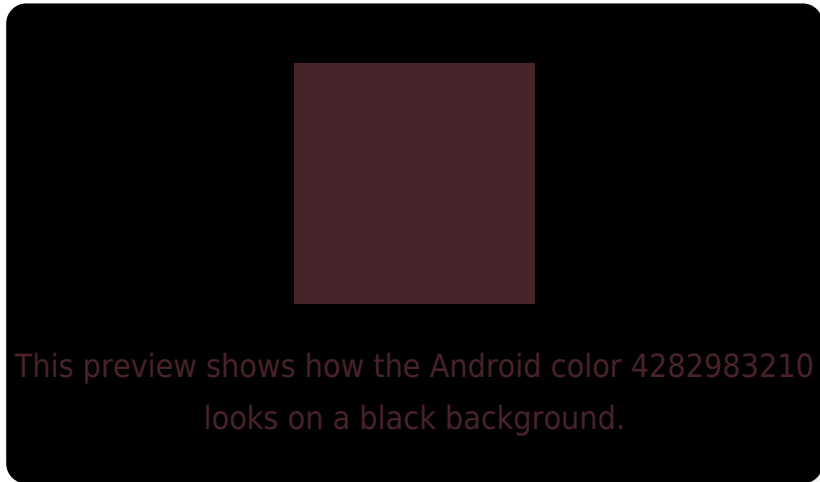
Large Text (above 18pt) WCAG AA ✓ Pass

Any Text WCAG AA ✓ Pass

Large Text (above 18pt) WCAG AAA ✓ Pass

Any Text WCAG AAA ✓ Pass

Black Background



Color Contrast Check

Large Text (above 18pt) WCAG AA × Fail

Any Text WCAG AA × Fail

Large Text (above 18pt) WCAG AAA × Fail

Any Text WCAG AAA × Fail

If you want to check with other color combinations, try the [Color Contrast Checker](#).

Android 4282983210 Background



This preview shows how black text looks on a background with the Android color 4282983210.

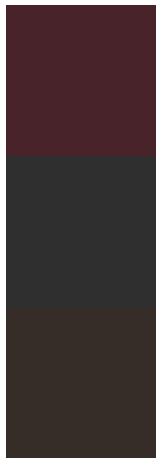


This preview shows how white text looks on a background with the Android color 4282983210.

Color Blindness Simulation

Color vision deficiency is a very complex topic, and I could not describe the different causes any better than Wikipedia does, so if you want to learn more, you should check out their [article about color blindness](#).

Dichromacy

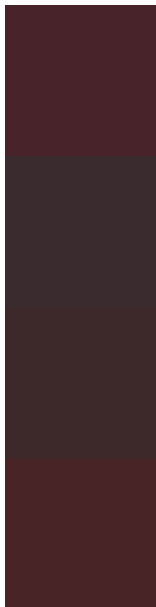


Original Color
4282983210

Protanopia
4281347888

Deuteranopia
4281740584

Trichromacy



Original Color

4282983210

Protanomaly

4281936686

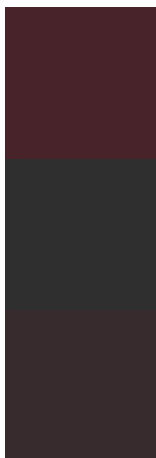
Deuteranomaly

4282198313

Tritanomaly

4282983463

Monochromacy



Original Color

4282983210

Achromatopsia

4281282351

Achromatomaly

4281871149

CSS Examples

Text

The CSS property to change the color of the text to Android 4282983210 is called "color". The color property can be set on classes, ids or directly on the HTML element.

This example shows how text in the color `rgb(73, 35, 42)` looks like.

```
.text, #text, p{  
    color:rgb(73, 35, 42)  
}
```

If you want to add a text shadow in that color use the text-shadow property, you can generate a text shadow directly with our [CSS Text Shadow Generator](#).

Here you see how black text with a 4 pixel rgb(73, 35, 42) colored shadow looks like.

```
.shadow{ text-shadow: 4px 4px 2px rgb(73, 35, 42) }
```

Border

The CSS property to change the border of an element to Android 4282983210 is called "border". The border property can be set on classes, ids or directly on the HTML element.

This example shows the color as border, it can be applied via the CSS property "border" or "border-color".

```
.border, #border, table{ border:4px solid rgb(73, 35, 42) }
```

If only the border color should be changed use the property border-color.

```
.border{ border-color:rgb(73, 35, 42) }
```

If you want to add a box shadow in that color use:

Here you see how a box with a 4 pixel rgb(73, 35, 42) colored shadow looks like.

```
.boxshadow{ -moz-box-shadow:4px 4px 4px  
4px rgb(73, 35, 42); -webkit-box-  
shadow:4px 4px 4px 4px rgb(73, 35, 42);  
box-shadow:4px 4px 4px 4px rgb(73, 35, 42)  
}
```

Background

The CSS property to change the background color of an element to Android 4282983210 is called "background". The background property can be set on classes, ids or directly on the HTML element.

```
.background, #background, body{  
background: rgb(73, 35, 42) }
```

If only the background color should be changed can be used:

```
.background{ background-color: rgb(73, 35,  
42) }
```

This example shows the color as background, it is applied via the CSS property "background".

To optimize and compress your CSS code, you can use our [online CSS compressor and optimizer](#) based on csstidy. If you want to create a linear or radial gradient as background or border, check our [CSS Gradient Generator](#).

Hey! You found this booklet interesting? Support Converting Colors with the new Membership Option!

The pro membership hides all ads, plus gives you double the colors in the color bucket, and more awesome pro features!

[Learn more, Memberships starting at \\$2.50/m!](#)

**Follow me
on Twitter!**

@ConvertingColor