

Converting Colors

Android(4282987321)

Have a look what the booklet for
Android(4282987321) contains.

Android(4282987321)	3
<i>Conversions</i>	4
<i>Details</i>	6
<i>Harmonies</i>	11
<i>Previews</i>	23
<i>Color Blindness Simulation</i>	26
<i>CSS Examples</i>	29

Color

Android(4282987321)

Conversions

Conversions Part 1

Format	Color
Hex	493339
RGB	73, 51, 57
RGB Percent	29%, 20%, 22%
CMY	0.7137, 0.8000, 0.7765
CMYK	0.00, 0.30, 0.22, 0.71
HSL	344°, 18%, 24%
HSV	344°, 30%, 29%
XYZ	4.6700, 4.0795, 4.4122
YIQ	58.2620, 11.1860, 6.5300

Conversions

Conversions Part 2

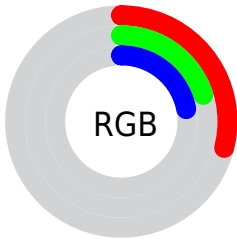
Format	Color
R_YB	73, 51, 57
Decimal	4797241
CIE Lab	23.93, 11.01, 0.15
CIE LCh	24, 11.009, 0.801
Yxy	4.0795, 0.3548, 0.3100
Android (android.graphics.Color)	4282987321 (0xFF493339)
YUV	58.2620, -0.6222, 12.9252
Hunter-Lab	20.1978, 5.9253, 1.1867

Details

The Android color **4282987321** is a dark color, and the websafe version is hex **333333**. A complement of this color would be **4281551171**, and the grayscale version is **4282006074**.

A 20% lighter version of the original color is **4286210664**, and **4280157710** is the 20% darker color. If you saturate the color by 10%, you get **4282985524**, and if you desaturate by 10%, it is **4282989118**.

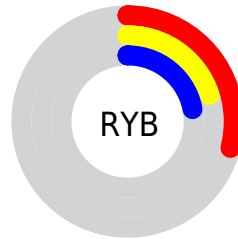
Distribution



Red (29%)

Green (20%)

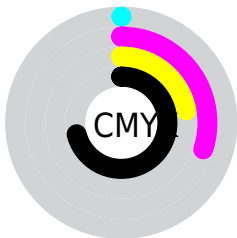
Blue (22%)



Red (29%)

Yellow (20%)

Blue (22%)

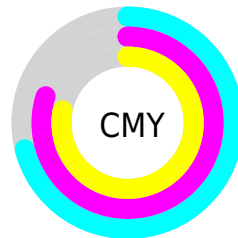


Cyan (0%)

Magenta (30%)

Yellow (22%)

Black (71%)



Cyan (71%)

Magenta (80%)

Yellow (78%)

Brightness & Saturation Gradients

These gradients show how the Android color 4282987321 changes by changing the brightness by 10 percent. The first figure shows a shift by +10% for each color and the second figure -10%.

Similar to the brightness gradients but the following saturation gradients show a change of the Android color 4282987321 by changing the saturation by 10% instead.



4282987321



4282987321

4294967295



4281474596



4286210664



4280157710



4287920769



4278190080



4289696923



4291473334



4293315281



4294961134



4282987321



4282987321



4282985524



4282989118

■ 4282983470

■ 4282991172

■ 4282981673

■ 4282992969

■ 4282979876

■ 4282994766

■ 4282978078

■ 4282996820

■ 4282976025

■ 4282998617

■ 4282974228

■ 4283000414

■ 4283002211

■ 4283004265

Harmonies

Analogous

The Analogous color harmony consists of three colors that are next to each other on the color wheel.



4282659905



4282987321



4283053105

Triad

The Triadic color harmony groups three colors that are evenly spaced from another and form a triangle on the color wheel.



4282987321



4281744171



4280630343

Complementary

The Complementary color scheme is a pair of colors which are on the opposite of each other on the color wheel.



4282987321



4281551171

Split Complementary

Split-complementary colors differ from the complementary color scheme. The scheme consists of three colors, the original color and two neighbors of the complement color.



4280368449



4282987321



4281089329

Square

The Square scheme is like the rectangle color scheme, but the four colors are evenly spaced on the color wheel.



4282987321



4282333224



4280565305



4281285193

Rectangle

The Rectangle color scheme consists of four colors that form a rectangle on the color wheel.



4282987321



4282922284



4280565305



4280499525

Sweetspot

The Sweet Spot groups the original color and five complimentary colors.



4282987321



4284372568



4282594121



4281346861



4289769648



4281348144

Same Dimension

The Same Dimension uses a secret algorithm to generate beautiful new colors.



4282987321



4284365894



4282988595



4280557601



4284678171



4293066814

Inverse Universe

The Inverse Universe completely reimagines the original color for something new.



4282987321



4284365894



4281549897



4280557601



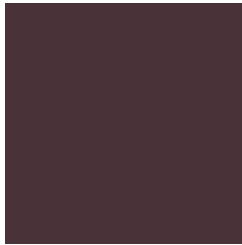
4284678171



4293066814

Previews

White Background



This preview shows how the Android color 4282987321 looks on a white background.

Color Contrast Check

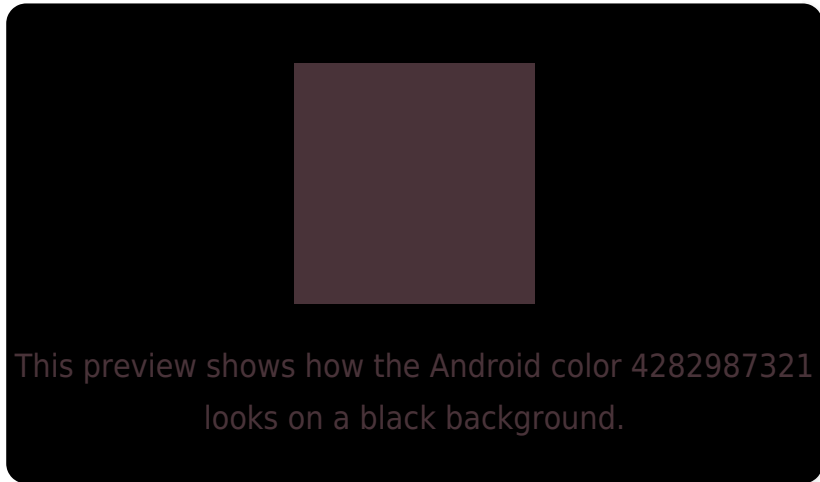
Large Text (above 18pt) WCAG AA ✓ Pass

Any Text WCAG AA ✓ Pass

Large Text (above 18pt) WCAG AAA ✓ Pass

Any Text WCAG AAA ✓ Pass

Black Background



Color Contrast Check

Large Text (above 18pt) WCAG AA × Fail

Any Text WCAG AA × Fail

Large Text (above 18pt) WCAG AAA × Fail

Any Text WCAG AAA × Fail

If you want to check with other color combinations, try the [Color Contrast Checker](#).

Android 4282987321 Background



This preview shows how black text looks on a background with the Android color 4282987321.

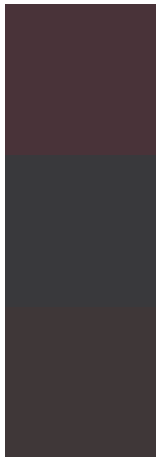


This preview shows how white text looks on a background with the Android color 4282987321.

Color Blindness Simulation

Color vision deficiency is a very complex topic, and I could not describe the different causes any better than Wikipedia does, so if you want to learn more, you should check out their [article about color blindness](#).

Dichromacy

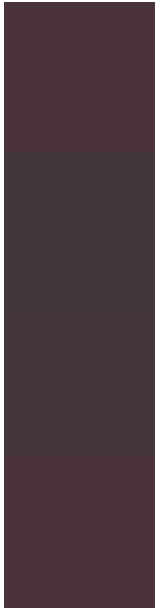


Original Color
4282987321

Protanopia
4281940284

Deuteranopia
4282332984

Trichromacy



Original Color

4282987321

Protanomaly

4282332987

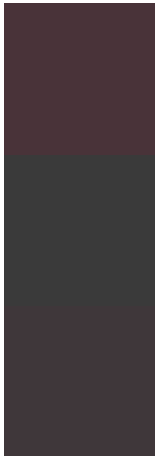
Deuteranomaly

4282594872

Tritanomaly

4282987320

Monochromacy



Original Color

4282987321

Achromatopsia

4282006074

Achromatomaly

4282332986

CSS Examples

Text

The CSS property to change the color of the text to Android 4282987321 is called "color". The color property can be set on classes, ids or directly on the HTML element.

This example shows how text in the color `rgb(73, 51, 57)` looks like.

```
.text, #text, p{  
    color:rgb(73, 51, 57)  
}
```

If you want to add a text shadow in that color use the text-shadow property, you can generate a text shadow directly with our [CSS Text Shadow Generator](#).

Here you see how black text with a 4 pixel rgb(73, 51, 57) colored shadow looks like.

```
.shadow{ text-shadow: 4px 4px 2px rgb(73, 51, 57) }
```

Border

The CSS property to change the border of an element to Android 4282987321 is called "border". The border property can be set on classes, ids or directly on the HTML element.

This example shows the color as border, it can be applied via the CSS property "border" or "border-color".

```
.border, #border, table{ border:4px solid rgb(73, 51, 57) }
```

If only the border color should be changed use the property `border-color`.

```
.border{ border-color:rgb(73, 51, 57) }
```

If you want to add a box shadow in that color use:

Here you see how a box with a 4 pixel `rgb(73, 51, 57)` colored shadow looks like.

```
.boxshadow{ -moz-box-shadow:4px 4px 4px  
4px rgb(73, 51, 57); -webkit-box-  
shadow:4px 4px 4px 4px rgb(73, 51, 57);  
box-shadow:4px 4px 4px 4px rgb(73, 51, 57)  
}
```

Background

The CSS property to change the background color of an element to Android 4282987321 is called "background". The background property can be set on classes, ids or directly on the HTML element.

```
.background, #background, body{  
background: rgb(73, 51, 57) }
```

If only the background color should be changed can be used:

```
.background{ background-color: rgb(73, 51,  
57) }
```

This example shows the color as background, it is applied via the CSS property "background".

To optimize and compress your CSS code, you can use our [online CSS compressor and optimizer](#) based on csstidy. If you want to create a linear or radial gradient as background or border, check our [CSS Gradient Generator](#).

Hey! You found this booklet interesting? Support Converting Colors with the new Membership Option!

The pro membership hides all ads, plus gives you double the colors in the color bucket, and more awesome pro features!

[Learn more, Memberships starting at \\$2.50/m!](#)

**Follow me
on Twitter!**

@ConvertingColor