

Converting Colors

Android(4282989358)

Have a look what the booklet for
Android(4282989358) contains.

Android(4282989358)	3
<i>Conversions</i>	4
<i>Details</i>	6
<i>Harmonies</i>	11
<i>Previews</i>	23
<i>Color Blindness Simulation</i>	26
<i>CSS Examples</i>	29

Color

Android(4282989358)

Conversions

Conversions Part 1

Format	Color
Hex	493B2E
RGB	73, 59, 46
RGB Percent	29%, 23%, 18%
CMY	0.7137, 0.7686, 0.8196
CMYK	0.00, 0.19, 0.37, 0.71
HSL	29°, 23%, 23%
HSV	29°, 37%, 29%
XYZ	4.8048, 4.7417, 3.2468
YIQ	61.7040, 12.5170, -1.0750

Conversions

Conversions Part 2

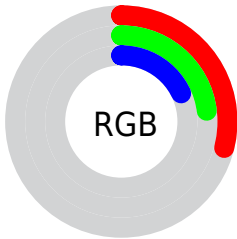
Format	Color
RYB	73, 71, 46
Decimal	4799278
CIELab	25.99, 3.90, 10.37
CIElCh	26, 11.080, 69.372
Yxy	4.7417, 0.3756, 0.3706
Android (android.graphics.Color)	4282989358 (0xFF493B2E)
YUV	61.7040, -7.7421, 9.9066
Hunter-Lab	21.7753, 1.2794, 6.4024

Details

The Android color **4282989358** is a dark color, and the websafe version is hex **333333**. A complement of this color would be **4281220169**, and the grayscale version is **4282269246**.

A 20% lighter version of the original color is **4286212700**, and **4280160512** is the 20% darker color. If you saturate the color by 10%, you get **4282988327**, and if you desaturate by 10%, it is **4282990389**.

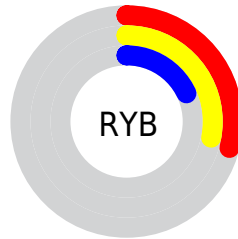
Distribution



Red (29%)

Green (23%)

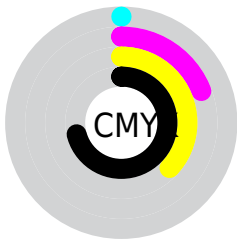
Blue (18%)



Red (29%)

Yellow (28%)

Blue (18%)

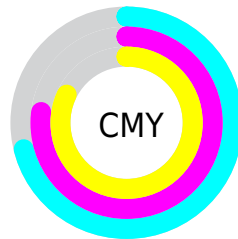


Cyan (0%)

Magenta (19%)

Yellow (37%)

Black (71%)



Cyan (71%)

Magenta (77%)

Yellow (82%)

Brightness & Saturation Gradients

These gradients show how the Android color 4282989358 changes by changing the brightness by 10 percent. The first figure shows a shift by +10% for each color and the second figure -10%.

Similar to the brightness gradients but the following saturation gradients show a change of the Android color 4282989358 by changing the saturation by 10% instead.



4282989358



4282989358

4294967295



4281476377



4286212700



4280160512



4287923060



4278190080



4289699214



4291541160



4293383364



4294963424



4294967292



4282989358



4282989358

■ 4282988327

■ 4282990389

■ 4282987295

■ 4282991421

■ 4282986520

■ 4282992196

■ 4282985489

■ 4282993227

■ 4282984457

■ 4282994259

■ 4282983426

■ 4282995290

■ 4282983168

■ 4282996065

■ 4282997096

■ 4282998128

Harmonies

Analogous

The Analogous color harmony consists of three colors that are next to each other on the color wheel.



4283316531



4282989358



4282465837

Triad

The Triadic color harmony groups three colors that are evenly spaced from another and form a triangle on the color wheel.



4282989358



4280762944



4282530379

Complementary

The Complementary color scheme is a pair of colors which are on the opposite of each other on the color wheel.



4282989358



4281220169

Split Complementary

Split-complementary colors differ from the complementary color scheme. The scheme consists of three colors, the original color and two neighbors of the complement color.



4281810254



4282989358



4280697416

Square

The Square scheme is like the rectangle color scheme, but the four colors are evenly spaced on the color wheel.



4282989358



4281221687



4281090125



4283119684

Rectangle

The Rectangle color scheme consists of four colors that form a rectangle on the color wheel.



4282989358



4282073135



4281090125



4282334028

Sweetspot

The Sweet Spot groups the original color and five complimentary colors.



4282989358



4284373332



4282986044



4281347370



4289769648



4281348144

Same Dimension

The Same Dimension uses a secret algorithm to generate beautiful new colors.



4282989358



4284369205



4282992686



4280558112



4284690432



4293094656

Inverse Universe

The Inverse Universe completely reimagines the original color for something new.



4281220169



4281682526



4281216841



4280295972



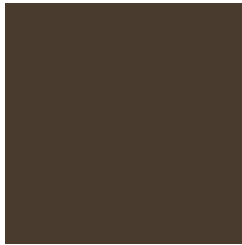
4278203491



4278220515

Previews

White Background



This preview shows how the Android color 4282989358 looks on a white background.

Color Contrast Check

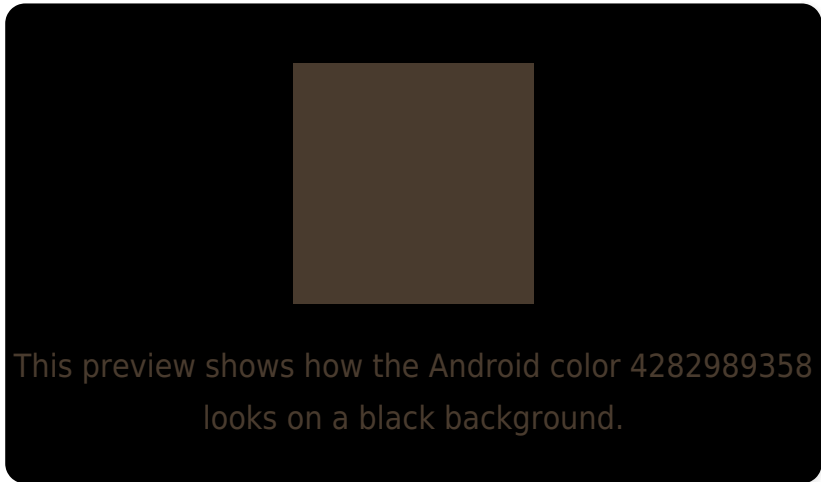
Large Text (above 18pt) WCAG AA ✓ Pass

Any Text WCAG AA ✓ Pass

Large Text (above 18pt) WCAG AAA ✓ Pass

Any Text WCAG AAA ✓ Pass

Black Background



Color Contrast Check

Large Text (above 18pt) WCAG AA × Fail

Any Text WCAG AA × Fail

Large Text (above 18pt) WCAG AAA × Fail

Any Text WCAG AAA × Fail

If you want to check with other color combinations, try the [Color Contrast Checker](#).

Android 4282989358 Background



This preview shows how black text looks on a background with the Android color 4282989358.

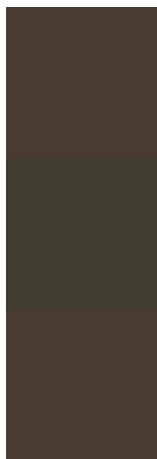


This preview shows how white text looks on a background with the Android color 4282989358.

Color Blindness Simulation

Color vision deficiency is a very complex topic, and I could not describe the different causes any better than Wikipedia does, so if you want to learn more, you should check out their [article about color blindness](#).

Dichromacy



Original Color

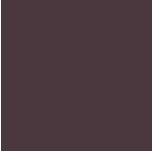
4282989358

Protanopia

4282531375

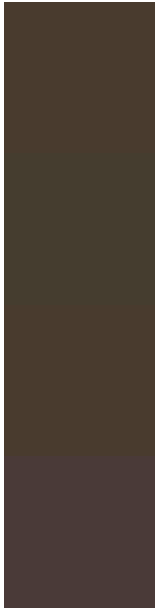
Deuteranopia

4282989358



Tritanopia
4283119933

Trichromacy



Original Color

4282989358

Protanomaly

4282727727

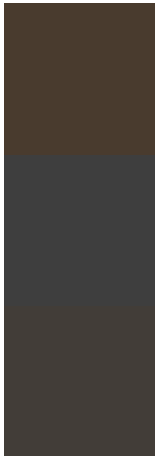
Deuteranomaly

4282989358

Tritanomaly

4283054648

Monochromacy



Original Color

4282989358

Achromatopsia

4282269246

Achromatomaly

4282531128

CSS Examples

Text

The CSS property to change the color of the text to Android 4282989358 is called "color". The color property can be set on classes, ids or directly on the HTML element.

This example shows how text in the color `rgb(73, 59, 46)` looks like.

```
.text, #text, p{  
    color:rgb(73, 59, 46)  
}
```

If you want to add a text shadow in that color use the text-shadow property, you can generate a text shadow directly with our [CSS Text Shadow Generator](#).

Here you see how black text with a 4 pixel rgb(73, 59, 46) colored shadow looks like.

```
.shadow{ text-shadow: 4px 4px 2px rgb(73, 59, 46) }
```

Border

The CSS property to change the border of an element to Android 4282989358 is called "border". The border property can be set on classes, ids or directly on the HTML element.

This example shows the color as border, it can be applied via the CSS property "border" or "border-color".

```
.border, #border, table{ border:4px solid rgb(73, 59, 46) }
```

If only the border color should be changed use the property `border-color`.

```
.border{ border-color:rgb(73, 59, 46) }
```

If you want to add a box shadow in that color use:

Here you see how a box with a 4 pixel `rgb(73, 59, 46)` colored shadow looks like.

```
.boxshadow{ -moz-box-shadow:4px 4px 4px  
4px rgb(73, 59, 46); -webkit-box-  
shadow:4px 4px 4px 4px rgb(73, 59, 46);  
box-shadow:4px 4px 4px 4px rgb(73, 59, 46)  
}
```

Background

The CSS property to change the background color of an element to Android 4282989358 is called "background". The background property can be set on classes, ids or directly on the HTML element.

```
.background, #background, body{  
background: rgb(73, 59, 46) }
```

If only the background color should be changed can be used:

```
.background{ background-color: rgb(73, 59,  
46) }
```

This example shows the color as background, it is applied via the CSS property "background".

To optimize and compress your CSS code, you can use our [online CSS compressor and optimizer](#) based on csstidy. If you want to create a linear or radial gradient as background or border, check our [CSS Gradient Generator](#).

Hey! You found this booklet interesting? Support Converting Colors with the new Membership Option!

The pro membership hides all ads, plus gives you double the colors in the color bucket, and more awesome pro features!

[Learn more, Memberships starting at \\$2.50/m!](#)

**Follow me
on Twitter!**

@ConvertingColor