

Converting Colors

Android(4283049252)

Have a look what the booklet for
Android(4283049252) contains.

Android(4283049252)	3
<i>Conversions</i>	4
<i>Details</i>	6
<i>Harmonies</i>	11
<i>Previews</i>	23
<i>Color Blindness Simulation</i>	26
<i>CSS Examples</i>	29

Color

Android(4283049252)

Conversions

Conversions Part 1

Format	Color
Hex	4A2524
RGB	74, 37, 36
RGB Percent	29%, 15%, 14%
CMY	0.7098, 0.8549, 0.8588
CMYK	0.00, 0.50, 0.51, 0.71
HSL	2°, 35%, 22%
HSV	2°, 51%, 29%
XYZ	3.8040, 2.9064, 2.0296
YIQ	47.9490, 22.3730, 7.5330

Conversions

Conversions Part 2

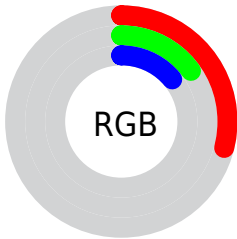
Format	Color
RYB	74, 37, 36
Decimal	4859172
CIELab	19.66, 17.30, 8.46
CIELCh	20, 19.261, 26.064
Yxy	2.9064, 0.4352, 0.3325
Android (android.graphics.Color)	4283049252 (0xFF4A2524)
YUV	47.9490, -5.8909, 22.8467
Hunter-Lab	17.0480, 9.9958, 4.8752

Details

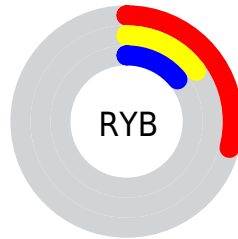
The Android color **4283049252** is a dark color, and the websafe version is hex **663333**. A complement of this color would be **4280568138**, and the grayscale version is **4281348144**.

A 20% lighter version of the original color is **4286403408**, and **4280090625** is the 20% darker color. If you saturate the color by 10%, you get **4283047453**, and if you desaturate by 10%, it is **4283051051**.

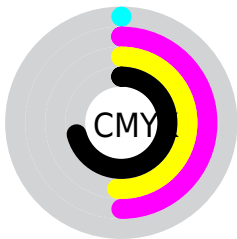
Distribution



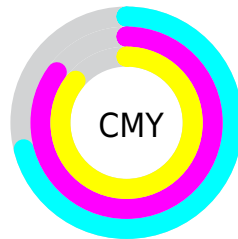
- Red (29%)
- Green (15%)
- Blue (14%)



- Red (29%)
- Yellow (15%)
- Blue (14%)



- Cyan (0%)
- Magenta (50%)
- Yellow (51%)
- Black (71%)



- Cyan (71%)
- Magenta (85%)
- Yellow (86%)

Brightness & Saturation Gradients

These gradients show how the Android color 4283049252 changes by changing the brightness by 10 percent. The first figure shows a shift by +10% for each color and the second figure -10%.

Similar to the brightness gradients but the following saturation gradients show a change of the Android color 4283049252 by changing the saturation by 10% instead.



4283049252



4283049252

4294967295



4281470991



4286403408



4280090625



4288113512



4278190080



4289954946



4291796892



4293638838



4294956754



4294963950



4283049252



4283049252

■ 4283047453

■ 4283051051

■ 4283045653

■ 4283052851

■ 4283043598

■ 4283054906

■ 4283041798

■ 4283056706

■ 4283040256

■ 4283058505

■ 4283060304

■ 4283062104

■ 4283064159

■ 4283065959

Harmonies

Analogous

The Analogous color harmony consists of three colors that are next to each other on the color wheel.



4282983474



4283049252



4282657049

Triad

The Triadic color harmony groups three colors that are evenly spaced from another and form a triangle on the color wheel.



4283049252



4279973151



4279513675

Complementary

The Complementary color scheme is a pair of colors which are on the opposite of each other on the color wheel.



4283049252



4280568138

Split Complementary

Split-complementary colors differ from the complementary color scheme. The scheme consists of three colors, the original color and two neighbors of the complement color.



4278203719



4283049252



4278335277

Square

The Square scheme is like the rectangle color scheme, but the four colors are evenly spaced on the color wheel.



4283049252



4281086486



4278204219



4281216329

Rectangle

The Rectangle color scheme consists of four colors that form a rectangle on the color wheel.



4283049252



4282264596



4278204219



4278661963

Sweetspot

The Sweet Spot groups the original color and five complimentary colors.



4283049252



4284568402



4283049033



4281346088



4289769648



4281348144

Same Dimension

The Same Dimension uses a secret algorithm to generate beautiful new colors.



4283049252



4284556837



4283054116



4280689442



4284875520



4293264896

Inverse Universe

The Inverse Universe completely reimagines the original color for something new.



4280568138



4280639329



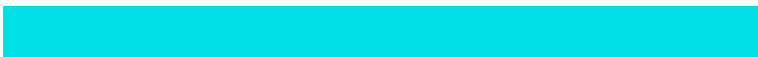
4280563274



4280428070



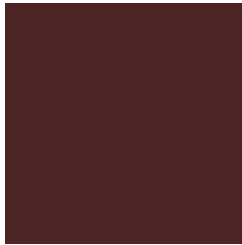
4278215526



4278247398

Previews

White Background



This preview shows how the Android color 4283049252 looks on a white background.

Color Contrast Check

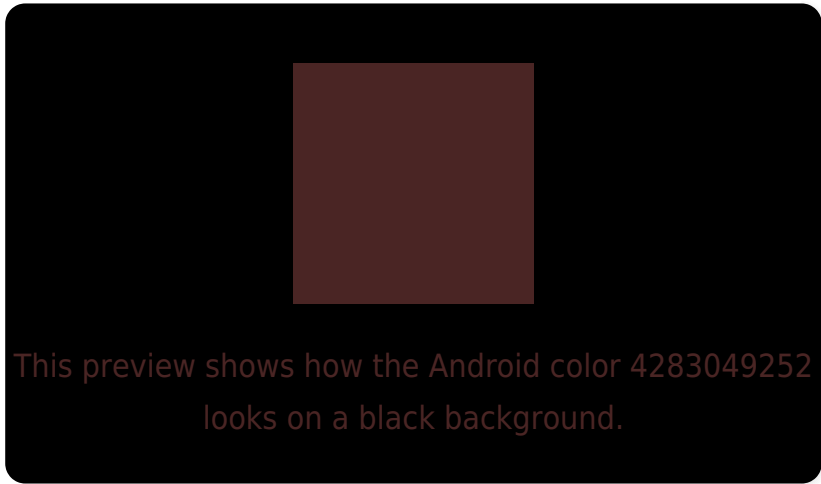
Large Text (above 18pt) WCAG AA ✓ Pass

Any Text WCAG AA ✓ Pass

Large Text (above 18pt) WCAG AAA ✓ Pass

Any Text WCAG AAA ✓ Pass

Black Background



Color Contrast Check

Large Text (above 18pt) WCAG AA × Fail

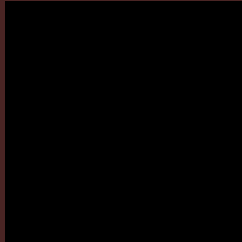
Any Text WCAG AA × Fail

Large Text (above 18pt) WCAG AAA × Fail

Any Text WCAG AAA × Fail

If you want to check with other color combinations, try the [Color Contrast Checker](#).

Android 4283049252 Background



This preview shows how black text looks on a background with the Android color 4283049252.



This preview shows how white text looks on a background with the Android color 4283049252.

Color Blindness Simulation

Color vision deficiency is a very complex topic, and I could not describe the different causes any better than Wikipedia does, so if you want to learn more, you should check out their [article about color blindness](#).

Dichromacy



Original Color

[4283049252](#)

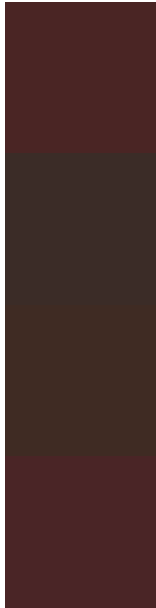
Protanopia

[4281544745](#)

Deuteranopia

[4281937442](#)

Trichromacy



Original Color

4283049252

Protanomaly

4282068007

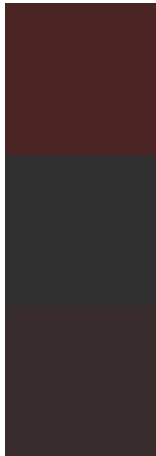
Deuteranomaly

4282329891

Tritanomaly

4283049254

Monochromacy



Original Color

4283049252

Achromatopsia

4281348144

Achromatomaly

4281936940

CSS Examples

Text

The CSS property to change the color of the text to Android 4283049252 is called "color". The color property can be set on classes, ids or directly on the HTML element.

This example shows how text in the color `rgb(74, 37, 36)` looks like.

```
.text, #text, p{  
    color:rgb(74, 37, 36)  
}
```

If you want to add a text shadow in that color use the text-shadow property, you can generate a text shadow directly with our [CSS Text Shadow Generator](#).

Here you see how black text with a 4 pixel rgb(74, 37, 36) colored shadow looks like.

```
.shadow{ text-shadow: 4px 4px 2px rgb(74, 37, 36) }
```

Border

The CSS property to change the border of an element to Android 4283049252 is called "border". The border property can be set on classes, ids or directly on the HTML element.

This example shows the color as border, it can be applied via the CSS property "border" or "border-color".

```
.border, #border, table{ border:4px solid rgb(74, 37, 36) }
```

If only the border color should be changed use the property `border-color`.

```
.border{ border-color:rgb(74, 37, 36) }
```

If you want to add a box shadow in that color use:

Here you see how a box with a 4 pixel `rgb(74, 37, 36)` colored shadow looks like.

```
.boxshadow{ -moz-box-shadow:4px 4px 4px  
4px rgb(74, 37, 36); -webkit-box-  
shadow:4px 4px 4px 4px rgb(74, 37, 36);  
box-shadow:4px 4px 4px 4px rgb(74, 37, 36)  
}
```

Background

The CSS property to change the background color of an element to Android 4283049252 is called "background". The background property can be set on classes, ids or directly on the HTML element.

```
.background, #background, body{  
background: rgb(74, 37, 36) }
```

If only the background color should be changed can be used:

```
.background{ background-color: rgb(74, 37,  
36) }
```

This example shows the color as background, it is applied via the CSS property "background".

To optimize and compress your CSS code, you can use our [online CSS compressor and optimizer](#) based on csstidy. If you want to create a linear or radial gradient as background or border, check our [CSS Gradient Generator](#).

Hey! You found this booklet
interesting? Support Converting
Colors with the new Membership
Option!

The pro membership hides all ads, plus gives you
double the colors in the color bucket, and more
awesome pro features!

[Learn more, Memberships starting at \\$2.50/m!](#)

**Follow me
on Twitter!**

@ConvertingColor