

Converting Colors

Android(4283114267)

Have a look what the booklet for
Android(4283114267) contains.

Android(4283114267)	3
<i>Conversions</i>	4
<i>Details</i>	6
<i>Harmonies</i>	11
<i>Previews</i>	23
<i>Color Blindness Simulation</i>	26
<i>CSS Examples</i>	29

Color

Android(4283114267)

Conversions

Conversions Part 1

Format	Color
Hex	4B231B
RGB	75, 35, 27
RGB Percent	29%, 14%, 11%
CMY	0.7059, 0.8627, 0.8941
CMYK	0.00, 0.53, 0.64, 0.71
HSL	10°, 47%, 20%
HSV	10°, 64%, 29%
XYZ	3.7005, 2.7771, 1.3779
YIQ	46.0480, 26.4080, 5.9920

Conversions

Conversions Part 2

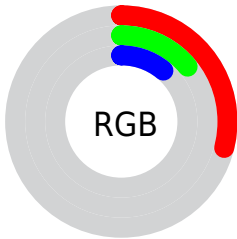
Format	Color
R_{YB}	75, 37, 27
Decimal	4924187
CIE _{Lab}	19.13, 18.05, 13.96
CIE _{LCh}	19, 22.818, 37.715
Yxy	2.7771, 0.4711, 0.3535
Android (android.graphics.Color)	4283114267 (0xFF4B231B)
YUV	46.0480, -9.3907, 25.3909
Hunter-Lab	16.6645, 10.4748, 6.7628

Details

The Android color **4283114267** is a dark color, and the websafe version is hex **663333**. A complement of this color would be **4279976779**, and the grayscale version is **4281216558**.

A 20% lighter version of the original color is **4286533702**, and **4280025089** is the 20% darker color. If you saturate the color by 10%, you get **4283112724**, and if you desaturate by 10%, it is **4283115811**.

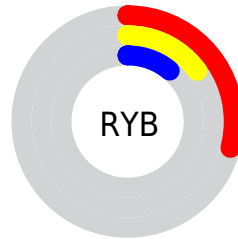
Distribution



Red (29%)

Green (14%)

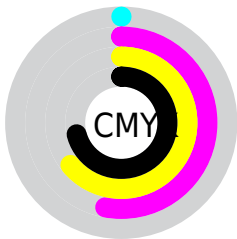
Blue (11%)



Red (29%)

Yellow (15%)

Blue (11%)

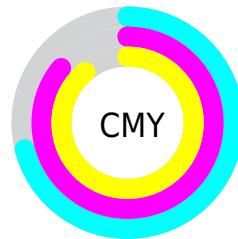


Cyan (0%)

Magenta (53%)

Yellow (64%)

Black (71%)



Cyan (71%)

Magenta (86%)

Yellow (89%)

Brightness & Saturation Gradients

These gradients show how the Android color 4283114267 changes by changing the brightness by 10 percent. The first figure shows a shift by +10% for each color and the second figure -10%.

Similar to the brightness gradients but the following saturation gradients show a change of the Android color 4283114267 by changing the saturation by 10% instead.



4283114267



4283114267

4294967295



4281536000



4286533702



4280025089



4288244062



4278190080



4290085495



4291927184



4293834667



4294955974



4294963170



4283114267



4283114267

■ 4283112724

■ 4283115811

■ 4283111180

■ 4283117610

■ 4283109381

■ 4283119153

■ 4283108608

■ 4283120697

■ 4283122241

■ 4283124040

■ 4283125584

■ 4283127127

■ 4283128671

Harmonies

Analogous

The Analogous color harmony consists of three colors that are next to each other on the color wheel.



4283244587



4283114267



4282525967

Triad

The Triadic color harmony groups three colors that are evenly spaced from another and form a triangle on the color wheel.



4283114267



4278728225



4279775055

Complementary

The Complementary color scheme is a pair of colors which are on the opposite of each other on the color wheel.



4283114267



4279976779

Split Complementary

Split-complementary colors differ from the complementary color scheme. The scheme consists of three colors, the original color and two neighbors of the complement color.



4278203469



4283114267



4278204210

Square

The Square scheme is like the rectangle color scheme, but the four colors are evenly spaced on the color wheel.



4283114267



4280431379



4278203970



4281673801

Rectangle

The Rectangle color scheme consists of four colors that form a rectangle on the color wheel.



4283114267



4281937163



4278203970



4278661455

Sweetspot

The Sweet Spot groups the original color and five complimentary colors.



4283114267



4284568142



4283112259



4281345829



4289769648



4281348144

Same Dimension

The Same Dimension uses a secret algorithm to generate beautiful new colors.



4283114267



4284556054



4283120411



4280689442



4284879104



4293273088

Inverse Universe

The Inverse Universe completely reimagines the original color for something new.



4279976779



4279653473



4279970635



4280428070



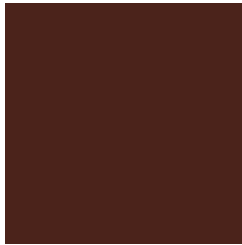
4278211942



4278239206

Previews

White Background



This preview shows how the Android color 4283114267 looks on a white background.

Color Contrast Check

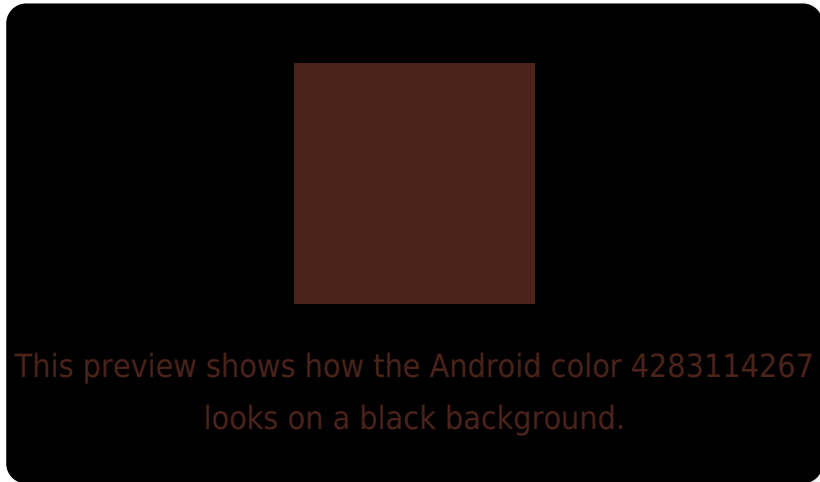
Large Text (above 18pt) WCAG AA ✓ Pass

Any Text WCAG AA ✓ Pass

Large Text (above 18pt) WCAG AAA ✓ Pass

Any Text WCAG AAA ✓ Pass

Black Background



Color Contrast Check

Large Text (above 18pt) WCAG AA × Fail

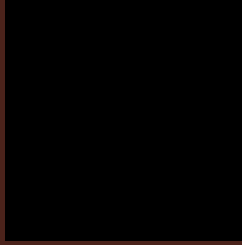
Any Text WCAG AA × Fail

Large Text (above 18pt) WCAG AAA × Fail

Any Text WCAG AAA × Fail

If you want to check with other color combinations, try the [Color Contrast Checker](#).

Android 4283114267 Background



This preview shows how black text looks on a background with the Android color 4283114267.

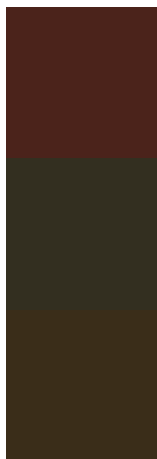


This preview shows how white text looks on a background with the Android color 4283114267.

Color Blindness Simulation

Color vision deficiency is a very complex topic, and I could not describe the different causes any better than Wikipedia does, so if you want to learn more, you should check out their [article about color blindness](#).

Dichromacy



Original Color
4283114267

Protanopia
4281544480

Deuteranopia
4282002713

Trichromacy



Original Color

4283114267

Protanomaly

4282133278

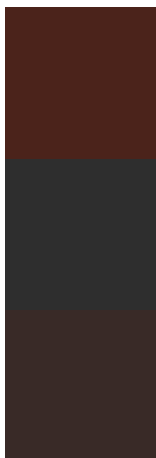
Deuteranomaly

4282394906

Tritanomaly

4283114017

Monochromacy



Original Color

4283114267

Achromatopsia

4281216558

Achromatomaly

4281936423

CSS Examples

Text

The CSS property to change the color of the text to Android 4283114267 is called "color". The color property can be set on classes, ids or directly on the HTML element.

This example shows how text in the color `rgb(75, 35, 27)` looks like.

```
.text, #text, p{  
    color:rgb(75, 35, 27)  
}
```

If you want to add a text shadow in that color use the text-shadow property, you can generate a text shadow directly with our [CSS Text Shadow Generator](#).

Here you see how black text with a 4 pixel rgb(75, 35, 27) colored shadow looks like.

```
.shadow{ text-shadow: 4px 4px 2px rgb(75, 35, 27) }
```

Border

The CSS property to change the border of an element to Android 4283114267 is called "border". The border property can be set on classes, ids or directly on the HTML element.

This example shows the color as border, it can be applied via the CSS property "border" or "border-color".

```
.border, #border, table{ border:4px solid rgb(75, 35, 27) }
```

If only the border color should be changed use the property border-color.

```
.border{ border-color:rgb(75, 35, 27) }
```

If you want to add a box shadow in that color use:

Here you see how a box with a 4 pixel rgb(75, 35, 27) colored shadow looks like.

```
.boxshadow{ -moz-box-shadow:4px 4px 4px  
4px rgb(75, 35, 27); -webkit-box-  
shadow:4px 4px 4px 4px rgb(75, 35, 27);  
box-shadow:4px 4px 4px 4px rgb(75, 35, 27)  
}
```

Background

The CSS property to change the background color of an element to Android 4283114267 is called "background". The background property can be set on classes, ids or directly on the HTML element.

```
.background, #background, body{  
background: rgb(75, 35, 27) }
```

If only the background color should be changed can be used:

```
.background{ background-color: rgb(75, 35,  
27) }
```

This example shows the color as background, it is applied via the CSS property "background".

To optimize and compress your CSS code, you can use our [online CSS compressor and optimizer](#) based on csstidy. If you want to create a linear or radial gradient as background or border, check our [CSS Gradient Generator](#).

Hey! You found this booklet
interesting? Support Converting
Colors with the new Membership
Option!

The pro membership hides all ads, plus gives you
double the colors in the color bucket, and more
awesome pro features!

[Learn more, Memberships starting at \\$2.50/m!](#)

**Follow me
on Twitter!**

@ConvertingColor