

Converting Colors

Android(4283115803)

Have a look what the booklet for
Android(4283115803) contains.

Android(4283115803)	3
<i>Conversions</i>	4
<i>Details</i>	6
<i>Harmonies</i>	11
<i>Previews</i>	23
<i>Color Blindness Simulation</i>	26
<i>CSS Examples</i>	29

Color

Android(4283115803)

Conversions

Conversions Part 1

Format	Color
Hex	4B291B
RGB	75, 41, 27
RGB Percent	29%, 16%, 11%
CMY	0.7059, 0.8392, 0.8941
CMYK	0.00, 0.45, 0.64, 0.71
HSL	18°, 47%, 20%
HSV	18°, 64%, 29%
XYZ	3.8924, 3.1609, 1.4419
YIQ	49.5700, 24.7580, 2.8540

Conversions

Conversions Part 2

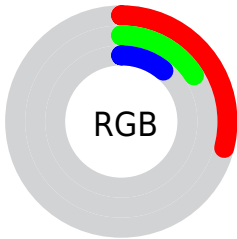
Format	Color
RYB	75, 47, 27
Decimal	4925723
CIELab	20.68, 14.25, 15.92
CIELCh	21, 21.368, 48.158
Yxy	3.1609, 0.4582, 0.3721
Android (android.graphics.Color)	4283115803 (0xFF4B291B)
YUV	49.5700, -11.1270, 22.3021
Hunter-Lab	17.7788, 7.9671, 7.6367

Details

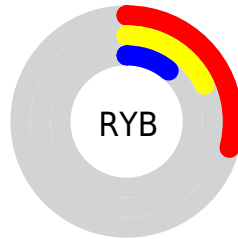
The Android color **4283115803** is a dark color, and the websafe version is hex **663333**. A complement of this color would be **4279975243**, and the grayscale version is **4281479730**.

A 20% lighter version of the original color is **4286469959**, and **4280090624** is the 20% darker color. If you saturate the color by 10%, you get **4283114516**, and if you desaturate by 10%, it is **4283117091**.

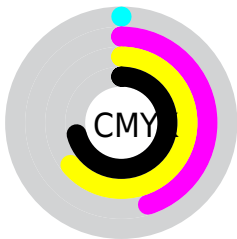
Distribution



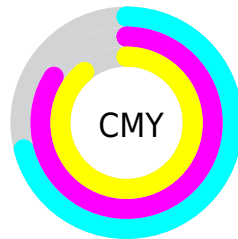
- Red (29%)
- Green (16%)
- Blue (11%)



- Red (29%)
- Yellow (18%)
- Blue (11%)



- Cyan (0%)
- Magenta (45%)
- Yellow (64%)
- Black (71%)



- Cyan (71%)
- Magenta (84%)
- Yellow (89%)

Brightness & Saturation Gradients

These gradients show how the Android color 4283115803 changes by changing the brightness by 10 percent. The first figure shows a shift by +10% for each color and the second figure -10%.

Similar to the brightness gradients but the following saturation gradients show a change of the Android color 4283115803 by changing the saturation by 10% instead.



4283115803



4283115803

4294967295



4281537537



4286469959



4280090624



4288245598



4278190080



4290021751



4291928977



4293770923



4294957767



4294964963



4283115803



4283115803

■ 4283114516

■ 4283117091

■ 4283112972

■ 4283118634

■ 4283111685

■ 4283119921

■ 4283110912

■ 4283121209

■ 4283122753

■ 4283124040

■ 4283125328

■ 4283126871

■ 4283128159

Harmonies

Analogous

The Analogous color harmony consists of three colors that are next to each other on the color wheel.



4283376937



4283115803



4282396434

Triad

The Triadic color harmony groups three colors that are evenly spaced from another and form a triangle on the color wheel.



4283115803



4278466859



4280889424

Complementary

The Complementary color scheme is a pair of colors which are on the opposite of each other on the color wheel.



4283115803



4279975243

Split Complementary

Split-complementary colors differ from the complementary color scheme. The scheme consists of three colors, the original color and two neighbors of the complement color.



4278269264



4283115803



4278204987

Square

The Square scheme is like the rectangle color scheme, but the four colors are evenly spaced on the color wheel.



4283115803



4280301340



4278204489



4282329671

Rectangle

The Rectangle color scheme consists of four colors that form a rectangle on the color wheel.



4283115803



4281807378



4278204489



4280234577

Sweetspot

The Sweet Spot groups the original color and five complimentary colors.



4283115803



4284568654



4283112253



4281346341



4289769648



4281348144

Same Dimension

The Same Dimension uses a secret algorithm to generate beautiful new colors.



4283115803



4284558358



4283121947



4280689698



4284882432



4293280512

Inverse Universe

The Inverse Universe completely reimagines the original color for something new.



4279975243



4279651169



4279969099



4280427814



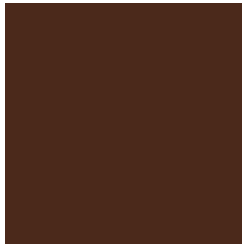
4278208614



4278232038

Previews

White Background



This preview shows how the Android color 4283115803 looks on a white background.

Color Contrast Check

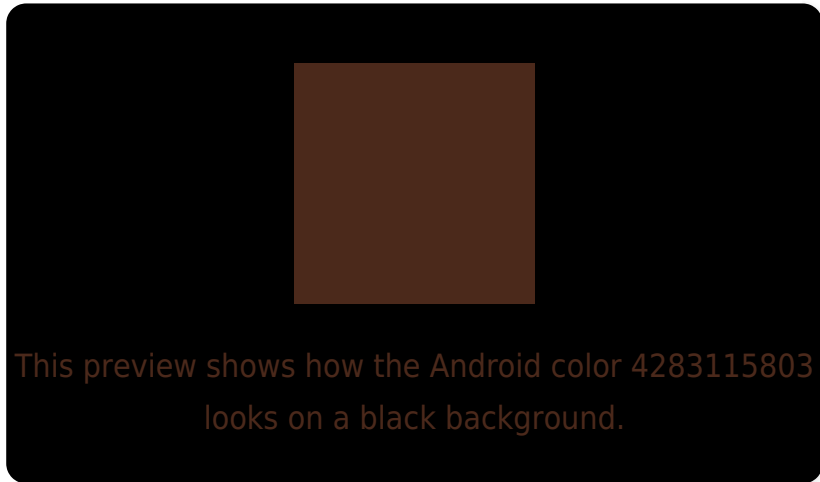
Large Text (above 18pt) WCAG AA ✓ Pass

Any Text WCAG AA ✓ Pass

Large Text (above 18pt) WCAG AAA ✓ Pass

Any Text WCAG AAA ✓ Pass

Black Background



Color Contrast Check

Large Text (above 18pt) WCAG AA × Fail

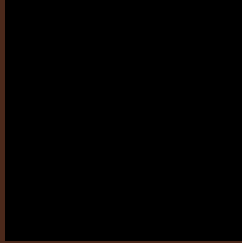
Any Text WCAG AA × Fail

Large Text (above 18pt) WCAG AAA × Fail

Any Text WCAG AAA × Fail

If you want to check with other color combinations, try the [Color Contrast Checker](#).

Android 4283115803 Background



This preview shows how black text looks on a background with the Android color 4283115803.

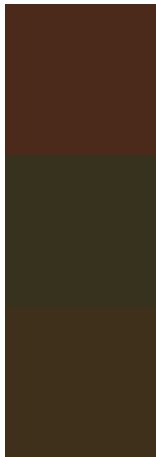


This preview shows how white text looks on a background with the Android color 4283115803.

Color Blindness Simulation

Color vision deficiency is a very complex topic, and I could not describe the different causes any better than Wikipedia does, so if you want to learn more, you should check out their [article about color blindness](#).

Dichromacy

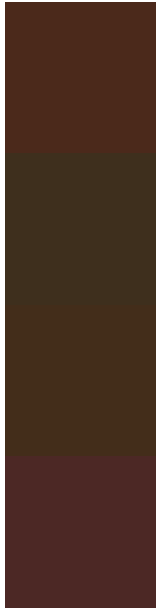


Original Color
4283115803

Protanopia
4281807390

Deuteranopia
4282265626

Trichromacy



Original Color
4283115803

Protanomaly
4282265373

Deuteranomaly
4282592538

Tritanomaly
4283181093

Monochromacy



Original Color
4283115803

Achromatopsia
4281479730

Achromatomaly
4282068778

CSS Examples

Text

The CSS property to change the color of the text to Android 4283115803 is called "color". The color property can be set on classes, ids or directly on the HTML element.

This example shows how text in the color `rgb(75, 41, 27)` looks like.

```
.text, #text, p{  
    color:rgb(75, 41, 27)  
}
```

If you want to add a text shadow in that color use the text-shadow property, you can generate a text shadow directly with our [CSS Text Shadow Generator](#).

Here you see how black text with a 4 pixel rgb(75, 41, 27) colored shadow looks like.

```
.shadow{ text-shadow: 4px 4px 2px rgb(75, 41, 27) }
```

Border

The CSS property to change the border of an element to Android 4283115803 is called "border". The border property can be set on classes, ids or directly on the HTML element.

This example shows the color as border, it can be applied via the CSS property "border" or "border-color".

```
.border, #border, table{ border:4px solid rgb(75, 41, 27) }
```

If only the border color should be changed use the property border-color.

```
.border{ border-color:rgb(75, 41, 27) }
```

If you want to add a box shadow in that color use:

Here you see how a box with a 4 pixel rgb(75, 41, 27) colored shadow looks like.

```
.boxshadow{ -moz-box-shadow:4px 4px 4px  
4px rgb(75, 41, 27); -webkit-box-  
shadow:4px 4px 4px 4px rgb(75, 41, 27);  
box-shadow:4px 4px 4px 4px rgb(75, 41, 27)  
}
```

Background

The CSS property to change the background color of an element to Android 4283115803 is called "background". The background property can be set on classes, ids or directly on the HTML element.

```
.background, #background, body{  
background: rgb(75, 41, 27) }
```

If only the background color should be changed can be used:

```
.background{ background-color: rgb(75, 41,  
27) }
```

This example shows the color as background, it is applied via the CSS property "background".

To optimize and compress your CSS code, you can use our [online CSS compressor and optimizer](#) based on csstidy. If you want to create a linear or radial gradient as background or border, check our [CSS Gradient Generator](#).

Hey! You found this booklet interesting? Support Converting Colors with the new Membership Option!

The pro membership hides all ads, plus gives you double the colors in the color bucket, and more awesome pro features!

[Learn more, Memberships starting at \\$2.50/m!](#)

**Follow me
on Twitter!**

@ConvertingColor