

Converting Colors

Android(4283119401)

Have a look what the booklet for
Android(4283119401) contains.

Android(4283119401)	3
<i>Conversions</i>	4
<i>Details</i>	6
<i>Harmonies</i>	11
<i>Previews</i>	23
<i>Color Blindness Simulation</i>	26
<i>CSS Examples</i>	29

Color

Android(4283119401)

Conversions

Conversions Part 1

Format	Color
Hex	4B3729
RGB	75, 55, 41
RGB Percent	29%, 22%, 16%
CMY	0.7059, 0.7843, 0.8392
CMYK	0.00, 0.27, 0.45, 0.71
HSL	25°, 29%, 23%
HSV	25°, 45%, 29%
XYZ	4.6681, 4.3883, 2.6988
YIQ	59.3840, 16.4140, -0.1140

Conversions

Conversions Part 2

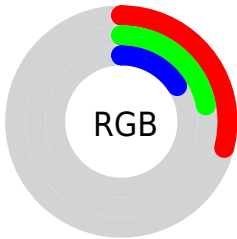
Format	Color
R_{YB}	75, 65, 41
Decimal	4929321
CIE _{Lab}	24.92, 6.75, 12.23
CIE _{LCh}	25, 13.968, 61.125
Yxy	4.3883, 0.3971, 0.3733
Android (android.graphics.Color)	4283119401 (0xFF4B3729)
YUV	59.3840, -9.0633, 13.6952
Hunter-Lab	20.9483, 3.1169, 7.0254

Details

The Android color **4283119401** is a dark color, and the websafe version is hex **333333**. A complement of this color would be **4280892747**, and the grayscale version is **4282071867**.

A 20% lighter version of the original color is **4286408278**, and **4280224768** is the 20% darker color. If you saturate the color by 10%, you get **4283118370**, and if you desaturate by 10%, it is **4283120433**.

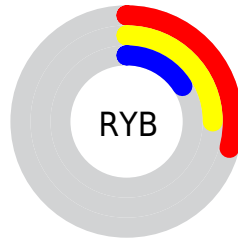
Distribution



Red (29%)

Green (22%)

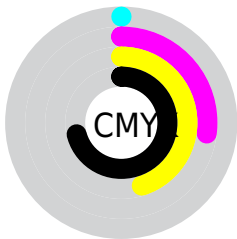
Blue (16%)



Red (29%)

Yellow (25%)

Blue (16%)

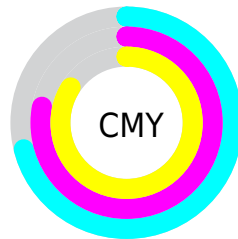


Cyan (0%)

Magenta (27%)

Yellow (45%)

Black (71%)



Cyan (71%)

Magenta (78%)

Yellow (84%)

Brightness & Saturation Gradients

These gradients show how the Android color 4283119401 changes by changing the brightness by 10 percent. The first figure shows a shift by +10% for each color and the second figure -10%.

Similar to the brightness gradients but the following saturation gradients show a change of the Android color 4283119401 by changing the saturation by 10% instead.



4283119401



4283119401

4294967295



4281606677



4286408278



4280224768



4288118639



4278190080



4289894792



4291736482



4293578685



4294962137



4294967286



4283119401



4283119401

■ 4283118370

■ 4283120433

■ 4283117082

■ 4283121720

■ 4283116051

■ 4283122752

■ 4283114763

■ 4283124039

■ 4283113732

■ 4283125071

■ 4283113216

■ 4283126102

■ 4283127390

■ 4283128421

■ 4283129709

Harmonies

Analogous

The Analogous color harmony consists of three colors that are next to each other on the color wheel.



4283446321



4283119401



4282530598

Triad

The Triadic color harmony groups three colors that are evenly spaced from another and form a triangle on the color wheel.



4283119401



4280238395



4282202189

Complementary

The Complementary color scheme is a pair of colors which are on the opposite of each other on the color wheel.



4283119401



4280892747

Split Complementary

Split-complementary colors differ from the complementary color scheme. The scheme consists of three colors, the original color and two neighbors of the complement color.



4281220176



4283119401



4279910726

Square

The Square scheme is like the rectangle color scheme, but the four colors are evenly spaced on the color wheel.



4283119401



4281024561



4280303437



4282987845

Rectangle

The Rectangle color scheme consists of four colors that form a rectangle on the color wheel.



4283119401



4282072359



4280303437



4281875023

Sweetspot

The Sweet Spot groups the original color and five complimentary colors.



4283119401



4284569939



4283115837



4281347112



4289769648



4281348144

Same Dimension

The Same Dimension uses a secret algorithm to generate beautiful new colors.



4283119401



4284564013



4283123753



4280689698



4284885504



4293287680

Inverse Universe

The Inverse Universe completely reimagines the original color for something new.



4280892747



4281158497



4280888395



4280427814



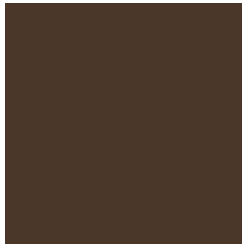
4278205542



4278224870

Previews

White Background



This preview shows how the Android color 4283119401 looks on a white background.

Color Contrast Check

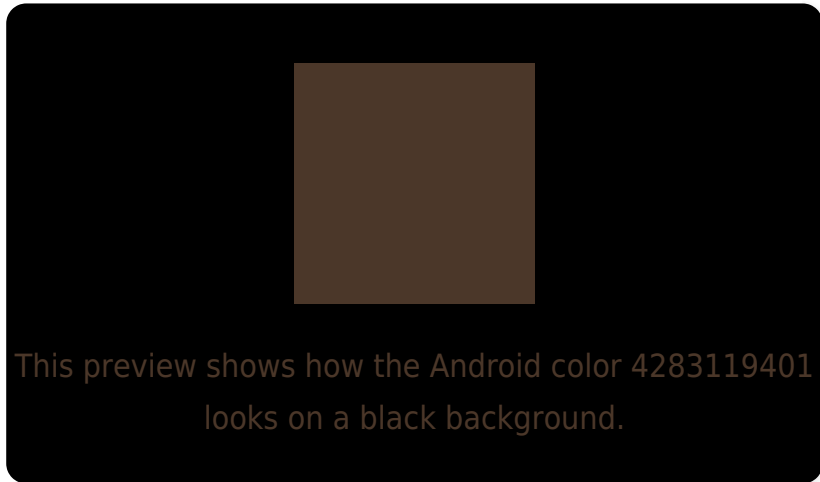
Large Text (above 18pt) WCAG AA ✓ Pass

Any Text WCAG AA ✓ Pass

Large Text (above 18pt) WCAG AAA ✓ Pass

Any Text WCAG AAA ✓ Pass

Black Background



Color Contrast Check

Large Text (above 18pt) WCAG AA × Fail

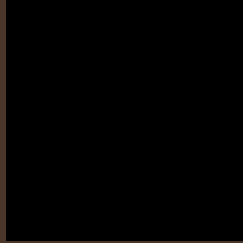
Any Text WCAG AA × Fail

Large Text (above 18pt) WCAG AAA × Fail

Any Text WCAG AAA × Fail

If you want to check with other color combinations, try the [Color Contrast Checker](#).

Android 4283119401 Background



This preview shows how black text looks on a background with the Android color 4283119401.

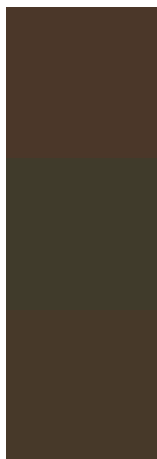


This preview shows how white text looks on a background with the Android color 4283119401.

Color Blindness Simulation

Color vision deficiency is a very complex topic, and I could not describe the different causes any better than Wikipedia does, so if you want to learn more, you should check out their [article about color blindness](#).

Dichromacy



Original Color

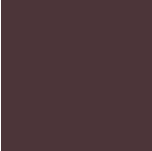
[4283119401](#)

Protanopia

[4282399531](#)

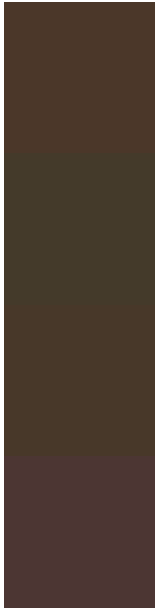
Deuteranopia

[4282857769](#)



Tritanopia
4283184441

Trichromacy



Original Color

4283119401

Protanomaly

4282661418

Deuteranomaly

4282923049

Tritanomaly

4283184691

Monochromacy



Original Color

4283119401

Achromatopsia

4282071867

Achromatomaly

4282464820

CSS Examples

Text

The CSS property to change the color of the text to Android 4283119401 is called "color". The color property can be set on classes, ids or directly on the HTML element.

This example shows how text in the color `rgb(75, 55, 41)` looks like.

```
.text, #text, p{  
    color:rgb(75, 55, 41)  
}
```

If you want to add a text shadow in that color use the text-shadow property, you can generate a text shadow directly with our [CSS Text Shadow Generator](#).

Here you see how black text with a 4 pixel rgb(75, 55, 41) colored shadow looks like.

```
.shadow{ text-shadow: 4px 4px 2px rgb(75, 55, 41) }
```

Border

The CSS property to change the border of an element to Android 4283119401 is called "border". The border property can be set on classes, ids or directly on the HTML element.

This example shows the color as border, it can be applied via the CSS property "border" or "border-color".

```
.border, #border, table{ border:4px solid rgb(75, 55, 41) }
```

If only the border color should be changed use the property border-color.

```
.border{ border-color:rgb(75, 55, 41) }
```

If you want to add a box shadow in that color use:

Here you see how a box with a 4 pixel rgb(75, 55, 41) colored shadow looks like.

```
.boxshadow{ -moz-box-shadow:4px 4px 4px  
4px rgb(75, 55, 41); -webkit-box-  
shadow:4px 4px 4px 4px rgb(75, 55, 41);  
box-shadow:4px 4px 4px 4px rgb(75, 55, 41)  
}
```

Background

The CSS property to change the background color of an element to Android 4283119401 is called "background". The background property can be set on classes, ids or directly on the HTML element.

```
.background, #background, body{  
background: rgb(75, 55, 41) }
```

If only the background color should be changed can be used:

```
.background{ background-color: rgb(75, 55,  
41) }
```

This example shows the color as background, it is applied via the CSS property "background".

To optimize and compress your CSS code, you can use our [online CSS compressor and optimizer](#) based on csstidy. If you want to create a linear or radial gradient as background or border, check our [CSS Gradient Generator](#).

Hey! You found this booklet interesting? Support Converting Colors with the new Membership Option!

The pro membership hides all ads, plus gives you double the colors in the color bucket, and more awesome pro features!

[Learn more, Memberships starting at \\$2.50/m!](#)

**Follow me
on Twitter!**

@ConvertingColor