

Converting Colors

Android(4283180068)

Have a look what the booklet for
Android(4283180068) contains.

Android(4283180068)	3
<i>Conversions</i>	4
<i>Details</i>	6
<i>Harmonies</i>	11
<i>Previews</i>	23
<i>Color Blindness Simulation</i>	26
<i>CSS Examples</i>	29

Color

Android(4283180068)

Conversions

Conversions Part 1

Format	Color
Hex	4C2424
RGB	76, 36, 36
RGB Percent	30%, 14%, 14%
CMY	0.7020, 0.8588, 0.8588
CMYK	0.00, 0.53, 0.53, 0.70
HSL	0°, 36%, 22%
HSV	0°, 53%, 30%
XYZ	3.9298, 2.9256, 2.0266
YIQ	47.9600, 23.8400, 8.4800

Conversions

Conversions Part 2

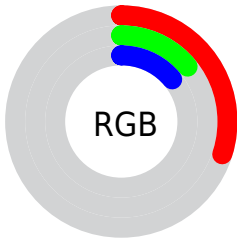
Format	Color
RYB	76, 36, 36
Decimal	4989988
CIELab	19.74, 18.83, 8.62
CIELCh	20, 20.708, 24.609
Yxy	2.9256, 0.4424, 0.3294
Android (android.graphics.Color)	4283180068 (0xFF4C2424)
YUV	47.9600, -5.8963, 24.5911
Hunter-Lab	17.1045, 11.0781, 4.9481

Details

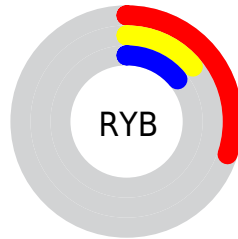
The Android color **4283180068** is a dark color, and the websafe version is hex **663333**. A complement of this color would be **4280568908**, and the grayscale version is **4281348144**.

A 20% lighter version of the original color is **4286534224**, and **4280221697** is the 20% darker color. If you saturate the color by 10%, you get **4283178012**, and if you desaturate by 10%, it is **4283182124**.

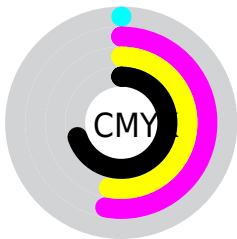
Distribution



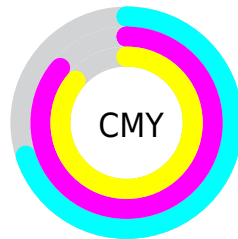
- Red (30%)
- Green (14%)
- Blue (14%)



- Red (30%)
- Yellow (14%)
- Blue (14%)



- Cyan (0%)
- Magenta (53%)
- Yellow (53%)
- Black (70%)



- Cyan (70%)
- Magenta (86%)
- Yellow (86%)

Brightness & Saturation Gradients

These gradients show how the Android color 4283180068 changes by changing the brightness by 10 percent. The first figure shows a shift by +10% for each color and the second figure -10%.

Similar to the brightness gradients but the following saturation gradients show a change of the Android color 4283180068 by changing the saturation by 10% instead.



4283180068



4283180068

4294967295



4281601807



4286534224



4280221697



4288309864



4278190080



4290086018



4291927708



4293835190



4294956498



4294963694



4283180068



4283180068

■ 4283178012

■ 4283182124

■ 4283176213

■ 4283183923

■ 4283174157

■ 4283185979

■ 4283172358

■ 4283187778

■ 4283170816

■ 4283189834

■ 4283191890

■ 4283193689

■ 4283195745

■ 4283197544

Harmonies

Analogous

The Analogous color harmony consists of three colors that are next to each other on the color wheel.



4283048755



4283180068



4282787864

Triad

The Triadic color harmony groups three colors that are evenly spaced from another and form a triangle on the color wheel.



4283180068



4279907870



4279054926

Complementary

The Complementary color scheme is a pair of colors which are on the opposite of each other on the color wheel.



4283180068



4280568908

Split Complementary

Split-complementary colors differ from the complementary color scheme. The scheme consists of three colors, the original color and two neighbors of the complement color.



4278203976



4283180068



4278204204

Square

The Square scheme is like the rectangle color scheme, but the four colors are evenly spaced on the color wheel.



4283180068



4281086739



4278204220



4281150795

Rectangle

The Rectangle color scheme consists of four colors that form a rectangle on the color wheel.



4283180068



4282330130



4278204220



4278203469

Sweetspot

The Sweet Spot groups the original color and five complimentary colors.



4283180068



4284699732



4283180108



4281542953



4289967027



4281545523

Same Dimension

The Same Dimension uses a secret algorithm to generate beautiful new colors.



4283180068



4284687653



4283185188



4280689186



4284874752



4293263360

Inverse Universe

The Inverse Universe completely reimagines the original color for something new.



4280568908



4280640355



4280563788



4280428070



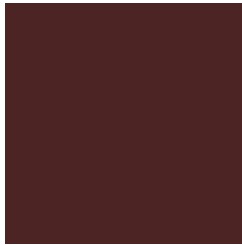
4278216294



4278249190

Previews

White Background



This preview shows how the Android color 4283180068 looks on a white background.

Color Contrast Check

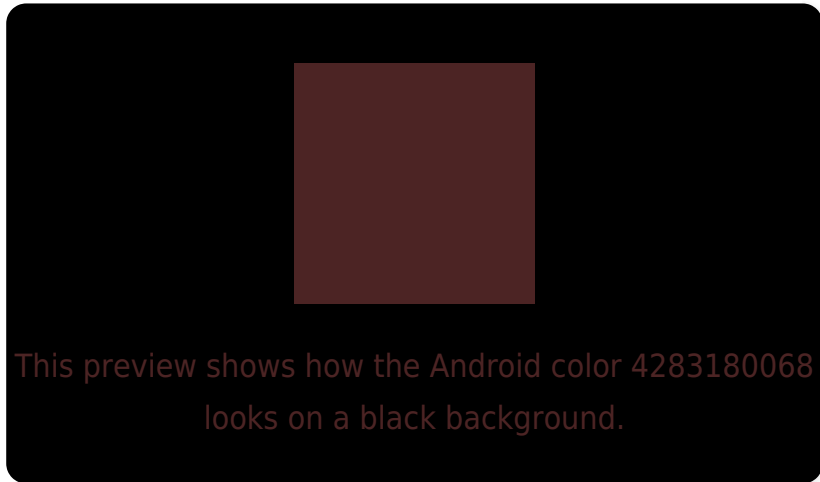
Large Text (above 18pt) WCAG AA ✓ Pass

Any Text WCAG AA ✓ Pass

Large Text (above 18pt) WCAG AAA ✓ Pass

Any Text WCAG AAA ✓ Pass

Black Background



Color Contrast Check

Large Text (above 18pt) WCAG AA × Fail

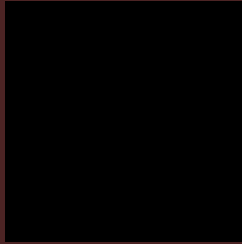
Any Text WCAG AA × Fail

Large Text (above 18pt) WCAG AAA × Fail

Any Text WCAG AAA × Fail

If you want to check with other color combinations, try the [Color Contrast Checker](#).

Android 4283180068 Background



This preview shows how black text looks on a background with the Android color 4283180068.



This preview shows how white text looks on a background with the Android color 4283180068.

Color Blindness Simulation

Color vision deficiency is a very complex topic, and I could not describe the different causes any better than Wikipedia does, so if you want to learn more, you should check out their [article about color blindness](#).

Dichromacy



Original Color

4283180068

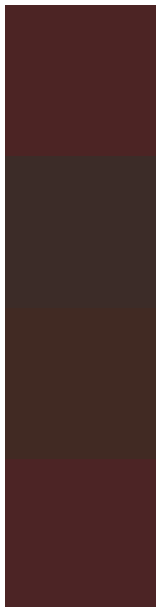
Protanopia

4281544746

Deuteranopia

4282002978

Trichromacy



Original Color

4283180068

Protanomaly

4282133544

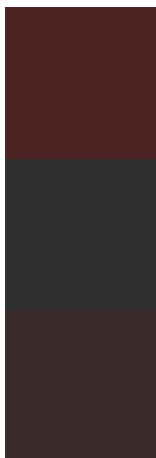
Deuteranomaly

4282460707

Tritanomaly

4283180069

Monochromacy



Original Color

4283180068

Achromatopsia

4281348144

Achromatomaly

4282002476

CSS Examples

Text

The CSS property to change the color of the text to Android 4283180068 is called "color". The color property can be set on classes, ids or directly on the HTML element.

This example shows how text in the color `rgb(76, 36, 36)` looks like.

```
.text, #text, p{  
    color:rgb(76, 36, 36)  
}
```

If you want to add a text shadow in that color use the text-shadow property, you can generate a text shadow directly with our [CSS Text Shadow Generator](#).

Here you see how black text with a 4 pixel rgb(76, 36, 36) colored shadow looks like.

```
.shadow{ text-shadow: 4px 4px 2px rgb(76, 36, 36) }
```

Border

The CSS property to change the border of an element to Android 4283180068 is called "border". The border property can be set on classes, ids or directly on the HTML element.

This example shows the color as border, it can be applied via the CSS property "border" or "border-color".

```
.border, #border, table{ border:4px solid rgb(76, 36, 36) }
```

If only the border color should be changed use the property `border-color`.

```
.border{ border-color:rgb(76, 36, 36) }
```

If you want to add a box shadow in that color use:

Here you see how a box with a 4 pixel `rgb(76, 36, 36)` colored shadow looks like.

```
.boxshadow{ -moz-box-shadow:4px 4px 4px  
4px rgb(76, 36, 36); -webkit-box-  
shadow:4px 4px 4px 4px rgb(76, 36, 36);  
box-shadow:4px 4px 4px 4px rgb(76, 36, 36)  
}
```

Background

The CSS property to change the background color of an element to Android 4283180068 is called "background". The background property can be set on classes, ids or directly on the HTML element.

```
.background, #background, body{  
background: rgb(76, 36, 36) }
```

If only the background color should be changed can be used:

```
.background{ background-color: rgb(76, 36,  
36) }
```

This example shows the color as background, it is applied via the CSS property "background".

To optimize and compress your CSS code, you can use our [online CSS compressor and optimizer](#) based on csstidy. If you want to create a linear or radial gradient as background or border, check our [CSS Gradient Generator](#).

Hey! You found this booklet interesting? Support Converting Colors with the new Membership Option!

The pro membership hides all ads, plus gives you double the colors in the color bucket, and more awesome pro features!

[Learn more, Memberships starting at \\$2.50/m!](#)

**Follow me
on Twitter!**

@ConvertingColor