

# Converting Colors

Android(4283181357)

Have a look what the booklet for  
Android(4283181357) contains.

<b>Android(4283181357)</b> .....	3
<i><b>Conversions</b></i> .....	4
<i><b>Details</b></i> .....	6
<i><b>Harmonies</b></i> .....	11
<i><b>Previews</b></i> .....	23
<i><b>Color Blindness Simulation</b></i> .....	26
<i><b>CSS Examples</b></i> .....	29

# Color

**Android(4283181357)**

# Conversions

## Conversions Part 1

Format	Color
Hex	4C292D
RGB	76, 41, 45
RGB Percent	30%, 16%, 18%
CMY	0.7020, 0.8392, 0.8235
CMYK	0.00, 0.46, 0.41, 0.70
HSL	353°, 30%, 23%
HSV	353°, 46%, 30%
XYZ	4.2471, 3.3118, 2.8980
YIQ	51.9210, 19.5760, 8.6640

# Conversions

## Conversions Part 2

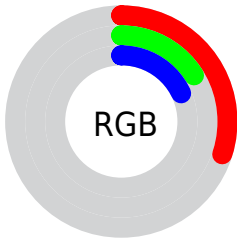
<b>Format</b>	<b>Color</b>
<b>R<sub>YB</sub></b>	76, 41, 45
Decimal	4991277
CIE <sub>Lab</sub>	21.25, 16.86, 4.51
CIE <sub>LCh</sub>	21, 17.453, 14.986
Yxy	3.3118, 0.4061, 0.3167
Android (android.graphics.Color)	4283181357 (0xFF4C292D)
YUV	51.9210, -3.4121, 21.1173
Hunter-Lab	18.1985, 9.8103, 3.2972

# Details

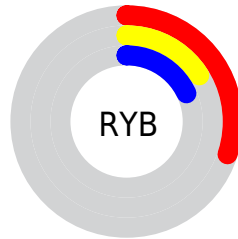
The Android color **4283181357** is a dark color, and the websafe version is hex **663333**. A complement of this color would be **4280896584**, and the grayscale version is **4281611316**.

A 20% lighter version of the original color is **4286469979**, and **4280352768** is the 20% darker color. If you saturate the color by 10%, you get **4283179302**, and if you desaturate by 10%, it is **4283183412**.

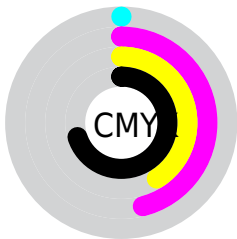
# Distribution



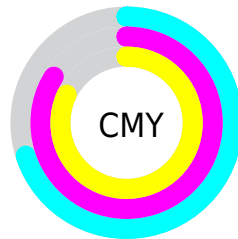
- Red (30%)
- Green (16%)
- Blue (18%)



- Red (30%)
- Yellow (16%)
- Blue (18%)



- Cyan (0%)
- Magenta (46%)
- Yellow (41%)
- Black (70%)



- Cyan (70%)
- Magenta (84%)
- Yellow (82%)

# Brightness & Saturation Gradients

These gradients show how the Android color 4283181357 changes by changing the brightness by 10 percent. The first figure shows a shift by +10% for each color and the second figure -10%.

Similar to the brightness gradients but the following saturation gradients show a change of the Android color 4283181357 by changing the saturation by 10% instead.





4283181357



4283181357

4294967295



4281603096



4286469979



4280352768



4288245875



4278190080



4290021773



4291863719



4293705666



4294958046



4294965243



4283181357



4283181357

■ 4283179302

■ 4283183412

■ 4283177504

■ 4283185210

■ 4283175449

■ 4283187265

■ 4283173650

■ 4283189064

■ 4283171595

■ 4283191119

■ 4283170825

■ 4283193173

■ 4283194972

■ 4283197027

■ 4283198826

# Harmonies

## Analogous

The Analogous color harmony consists of three colors that are next to each other on the color wheel.



4282919482



4283181357



4282985505

# Triad

The Triadic color harmony groups three colors that are evenly spaced from another and form a triangle on the color wheel.



4283181357



4280760352



4279449164

# Complementary

The Complementary color scheme is a pair of colors which are on the opposite of each other on the color wheel.



4283181357



4280896584

# Split Complementary

Split-complementary colors differ from the complementary color scheme. The scheme consists of three colors, the original color and two neighbors of the complement color.



4278204741



4283181357



4279646508

# Square

The Square scheme is like the rectangle color scheme, but the four colors are evenly spaced on the color wheel.



4283181357



4281676826



4278270521



4281021004

# Rectangle

The Rectangle color scheme consists of four colors that form a rectangle on the color wheel.



4283181357



4282658332



4278270521



4278794058



# Sweetspot

The Sweet Spot groups the original color and five complimentary colors.



4283181357



4284700247



4282919244



4281543211



4289967027



4281545523



# Same Dimension

The Same Dimension uses a secret algorithm to generate beautiful new colors.



4283181357



4284689715



4283184681



4280689187



4284874764



4293263386



# Inverse Universe

The Inverse Universe completely reimagines the original color for something new.



4283181357



4284689715



4280893260



4280689187



4284874764

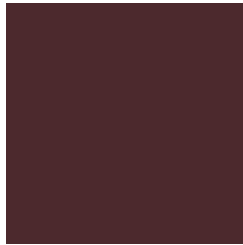


4293263386



# Previews

## White Background



This preview shows how the Android color 4283181357 looks on a white background.

## Color Contrast Check

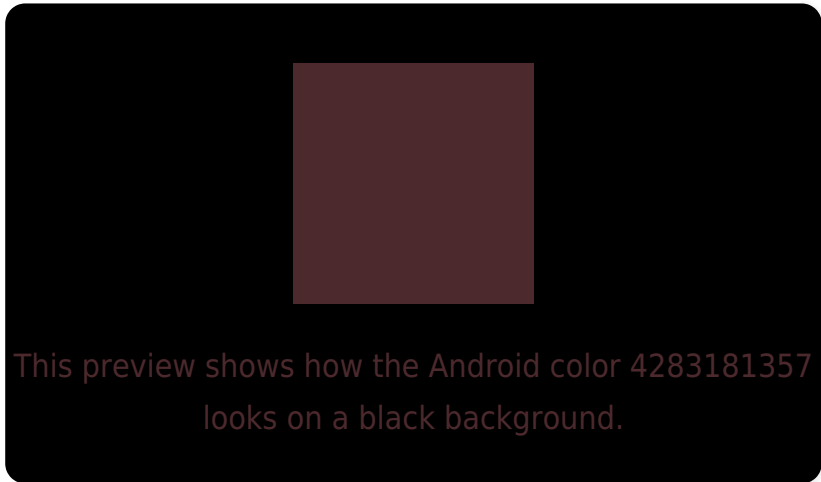
Large Text (above 18pt) WCAG AA ✓ Pass

Any Text WCAG AA ✓ Pass

Large Text (above 18pt) WCAG AAA ✓ Pass

Any Text WCAG AAA ✓ Pass

# Black Background



## Color Contrast Check

Large Text (above 18pt) WCAG AA × Fail

Any Text WCAG AA × Fail

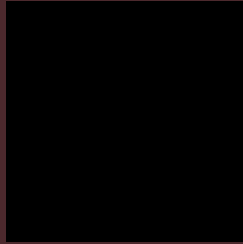
Large Text (above 18pt) WCAG AAA × Fail

Any Text WCAG AAA × Fail

If you want to check with other color combinations, try the [Color Contrast Checker](#).



# Android 4283181357 Background



This preview shows how black text looks on a background with the Android color 4283181357.

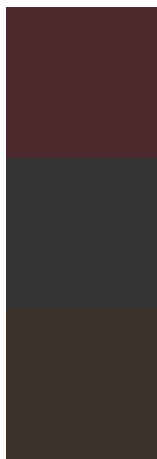


This preview shows how white text looks on a background with the Android color 4283181357.

# Color Blindness Simulation

Color vision deficiency is a very complex topic, and I could not describe the different causes any better than Wikipedia does, so if you want to learn more, you should check out their [article about color blindness](#).

## Dichromacy



**Original Color**  
4283181357

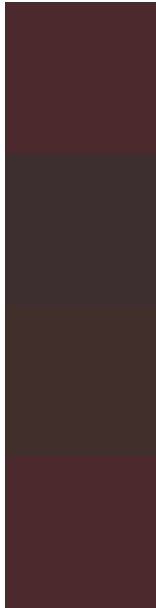
**Protanopia**  
4281676594

**Deuteranopia**  
4282069548



**Tritanopia**  
4283181356

# Trichromacy



**Original Color**

4283181357

**Protanomaly**

4282199856

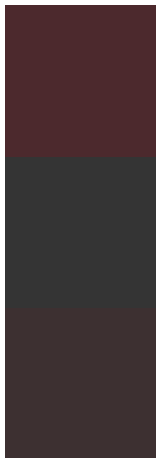
**Deuteranomaly**

4282461996

**Tritanomaly**

4283181356

# Monochromacy



**Original Color**

4283181357

**Achromatopsia**

4281611316

**Achromatomaly**

4282200113

# CSS Examples

## Text

The CSS property to change the color of the text to Android 4283181357 is called "color". The color property can be set on classes, ids or directly on the HTML element.

This example shows how text in the color `rgb(76, 41, 45)` looks like.

```
.text, #text, p{  
    color:rgb(76, 41, 45)  
}
```

If you want to add a text shadow in that color use the text-shadow property, you can generate a text shadow directly with our [CSS Text Shadow Generator](#).

Here you see how black text with a 4 pixel rgb(76, 41, 45) colored shadow looks like.

```
.shadow{ text-shadow: 4px 4px 2px rgb(76, 41, 45) }
```

## Border

The CSS property to change the border of an element to Android 4283181357 is called "border". The border property can be set on classes, ids or directly on the HTML element.

This example shows the color as border, it can be applied via the CSS property "border" or "border-color".

```
.border, #border, table{ border:4px solid rgb(76, 41, 45) }
```

If only the border color should be changed use the property `border-color`.

```
.border{ border-color:rgb(76, 41, 45) }
```

If you want to add a box shadow in that color use:

Here you see how a box with a 4 pixel `rgb(76, 41, 45)` colored shadow looks like.

```
.boxshadow{ -moz-box-shadow:4px 4px 4px  
4px rgb(76, 41, 45); -webkit-box-  
shadow:4px 4px 4px 4px rgb(76, 41, 45);  
box-shadow:4px 4px 4px 4px rgb(76, 41, 45)  
}
```

# Background

The CSS property to change the background color of an element to Android 4283181357 is called "background". The background property can be set on classes, ids or directly on the HTML element.

```
.background, #background, body{  
background: rgb(76, 41, 45) }
```

If only the background color should be changed can be used:

```
.background{ background-color: rgb(76, 41,  
45) }
```

This example shows the color as background, it is applied via the CSS property "background".

To optimize and compress your CSS code, you can use our [online CSS compressor and optimizer](#) based on csstidy. If you want to create a linear or radial gradient as background or border, check our [CSS Gradient Generator](#).



Hey! You found this booklet interesting? Support Converting Colors with the new Membership Option!

The pro membership hides all ads, plus gives you double the colors in the color bucket, and more awesome pro features!

**[Learn more, Memberships starting at \\$2.50/m!](#)**

**Follow me  
on Twitter!**

@ConvertingColor