

Converting Colors

Android(4283246120)

Have a look what the booklet for
Android(4283246120) contains.

Android(4283246120)	3
<i>Conversions</i>	4
<i>Details</i>	6
<i>Harmonies</i>	11
<i>Previews</i>	23
<i>Color Blindness Simulation</i>	26
<i>CSS Examples</i>	29

Color

Android(4283246120)

Conversions

Conversions Part 1

Format	Color
Hex	4D2628
RGB	77, 38, 40
RGB Percent	30%, 15%, 16%
CMY	0.6980, 0.8510, 0.8431
CMYK	0.00, 0.51, 0.48, 0.70
HSL	357°, 34%, 23%
HSV	357°, 51%, 30%
XYZ	4.1367, 3.1172, 2.3911
YIQ	49.8890, 22.6020, 8.8900

Conversions

Conversions Part 2

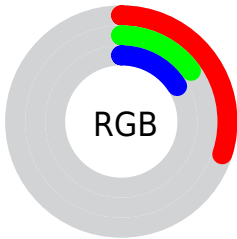
Format	Color
RYB	77, 38, 40
Decimal	5056040
CIELab	20.51, 18.52, 6.94
CIElCh	21, 19.774, 20.535
Yxy	3.1172, 0.4289, 0.3232
Android (android.graphics.Color)	4283246120 (0xFF4D2628)
YUV	49.8890, -4.8753, 23.7763
Hunter-Lab	17.6556, 10.9249, 4.3292

Details

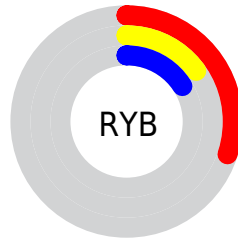
The Android color **4283246120** is a dark color, and the websafe version is hex **663333**. A complement of this color would be **4280700235**, and the grayscale version is **4281479730**.

A 20% lighter version of the original color is **4286600277**, and **4280352769** is the 20% darker color. If you saturate the color by 10%, you get **4283244065**, and if you desaturate by 10%, it is **4283248175**.

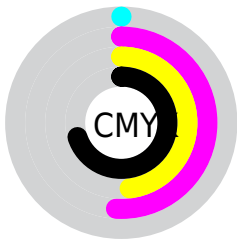
Distribution



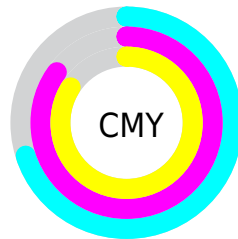
- Red (30%)
- Green (15%)
- Blue (16%)



- Red (30%)
- Yellow (15%)
- Blue (16%)



- Cyan (0%)
- Magenta (51%)
- Yellow (48%)
- Black (70%)



- Cyan (70%)
- Magenta (85%)
- Yellow (84%)

Brightness & Saturation Gradients

These gradients show how the Android color 4283246120 changes by changing the brightness by 10 percent. The first figure shows a shift by +10% for each color and the second figure -10%.

Similar to the brightness gradients but the following saturation gradients show a change of the Android color 4283246120 by changing the saturation by 10% instead.

 4283246120

 4283246120

4294967295

 4281667860

 4286600277

 4280352769

 4288375917

 4278190080

 4290152070

 4291993761

 4293901244

 4294957015

 4294964468

 4283246120

 4283246120

■ 4283244065

■ 4283248175

■ 4283242265

■ 4283249975

■ 4283240210

■ 4283252030

■ 4283238155

■ 4283254085

■ 4283236356

■ 4283256141

■ 4283257940

■ 4283259995

■ 4283262050

■ 4283263850

Harmonies

Analogous

The Analogous color harmony consists of three colors that are next to each other on the color wheel.



4283049527



4283246120



4282919452

Triad

The Triadic color harmony groups three colors that are evenly spaced from another and form a triangle on the color wheel.



4283246120



4280301342



4279120974

Complementary

The Complementary color scheme is a pair of colors which are on the opposite of each other on the color wheel.



4283246120



4280700235

Split Complementary

Split-complementary colors differ from the complementary color scheme. The scheme consists of three colors, the original color and two neighbors of the complement color.



4278204231



4283246120



4278663468

Square

The Square scheme is like the rectangle color scheme, but the four colors are evenly spaced on the color wheel.



4283246120



4281349141



4278204731



4281085773

Rectangle

The Rectangle color scheme consists of four colors that form a rectangle on the color wheel.



4283246120



4282526998



4278204731



4278203980

Sweetspot

The Sweet Spot groups the original color and five complimentary colors.



4283246120



4284699989



4283049549



4281543210



4289967027



4281545523

Same Dimension

The Same Dimension uses a secret algorithm to generate beautiful new colors.



4283246120



4284688170



4283250470



4280689187



4284874757



4293263372

Inverse Universe

The Inverse Universe completely reimagines the original color for something new.



4283246120



4284688170



4280695885



4280689187



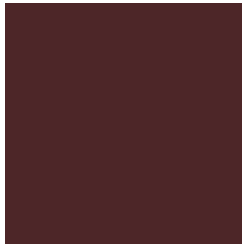
4284874757



4293263372

Previews

White Background



This preview shows how the Android color 4283246120 looks on a white background.

Color Contrast Check

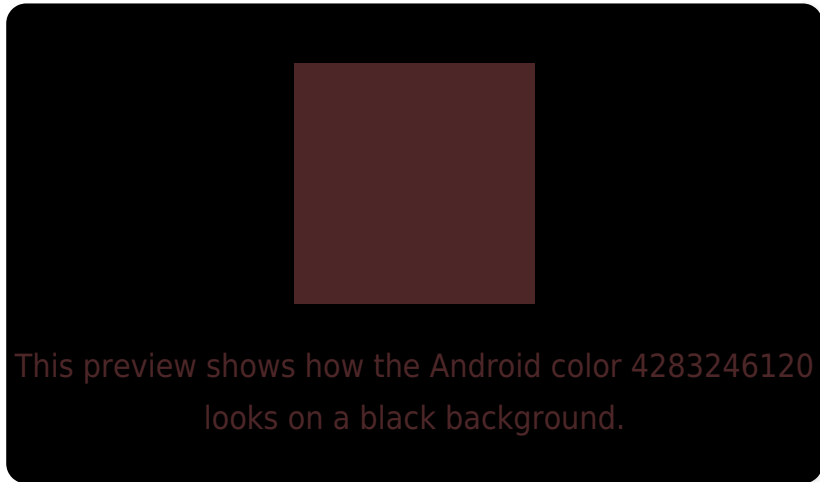
Large Text (above 18pt) WCAG AA ✓ Pass

Any Text WCAG AA ✓ Pass

Large Text (above 18pt) WCAG AAA ✓ Pass

Any Text WCAG AAA ✓ Pass

Black Background



Color Contrast Check

Large Text (above 18pt) WCAG AA × Fail

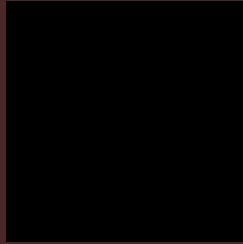
Any Text WCAG AA × Fail

Large Text (above 18pt) WCAG AAA × Fail

Any Text WCAG AAA × Fail

If you want to check with other color combinations, try the [Color Contrast Checker](#).

Android 4283246120 Background



This preview shows how black text looks on a background with the Android color 4283246120.



This preview shows how white text looks on a background with the Android color 4283246120.

Color Blindness Simulation

Color vision deficiency is a very complex topic, and I could not describe the different causes any better than Wikipedia does, so if you want to learn more, you should check out their [article about color blindness](#).

Dichromacy



Original Color


4283246120

Protanopia

4281610798

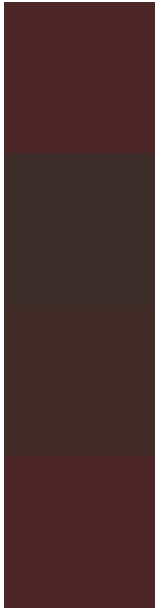
Deuteranopia

4282069030



Tritanopia
4283246121

Trichromacy



Original Color

4283246120

Protanomaly

4282199596

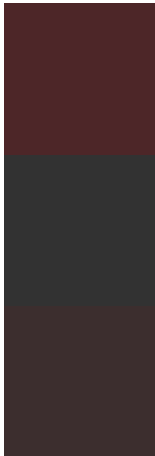
Deuteranomaly

4282526759

Tritanomaly

4283246121

Monochromacy



Original Color

4283246120

Achromatopsia

4281479730

Achromatomaly

4282134062

CSS Examples

Text

The CSS property to change the color of the text to Android 4283246120 is called "color". The color property can be set on classes, ids or directly on the HTML element.

This example shows how text in the color `rgb(77, 38, 40)` looks like.

```
.text, #text, p{  
    color:rgb(77, 38, 40)  
}
```

If you want to add a text shadow in that color use the text-shadow property, you can generate a text shadow directly with our [CSS Text Shadow Generator](#).

Here you see how black text with a 4 pixel rgb(77, 38, 40) colored shadow looks like.

```
.shadow{ text-shadow: 4px 4px 2px rgb(77, 38, 40) }
```

Border

The CSS property to change the border of an element to Android 4283246120 is called "border". The border property can be set on classes, ids or directly on the HTML element.

This example shows the color as border, it can be applied via the CSS property "border" or "border-color".

```
.border, #border, table{ border:4px solid rgb(77, 38, 40) }
```

If only the border color should be changed use the property `border-color`.

```
.border{ border-color:rgb(77, 38, 40) }
```

If you want to add a box shadow in that color use:

Here you see how a box with a 4 pixel `rgb(77, 38, 40)` colored shadow looks like.

```
.boxshadow{ -moz-box-shadow:4px 4px 4px  
4px rgb(77, 38, 40); -webkit-box-  
shadow:4px 4px 4px 4px rgb(77, 38, 40);  
box-shadow:4px 4px 4px 4px rgb(77, 38, 40)  
}
```

Background

The CSS property to change the background color of an element to Android 4283246120 is called "background". The background property can be set on classes, ids or directly on the HTML element.

```
.background, #background, body{  
background: rgb(77, 38, 40) }
```

If only the background color should be changed can be used:

```
.background{ background-color: rgb(77, 38,  
40) }
```

This example shows the color as background, it is applied via the CSS property "background".

To optimize and compress your CSS code, you can use our [online CSS compressor and optimizer](#) based on csstidy. If you want to create a linear or radial gradient as background or border, check our [CSS Gradient Generator](#).

Hey! You found this booklet interesting? Support Converting Colors with the new Membership Option!

The pro membership hides all ads, plus gives you double the colors in the color bucket, and more awesome pro features!

[Learn more, Memberships starting at \\$2.50/m!](#)

**Follow me
on Twitter!**

@ConvertingColor