

Converting Colors

Android(4283249719)

Have a look what the booklet for
Android(4283249719) contains.

Android(4283249719)	3
<i>Conversions</i>	4
<i>Details</i>	6
<i>Harmonies</i>	11
<i>Previews</i>	23
<i>Color Blindness Simulation</i>	26
<i>CSS Examples</i>	29

Color

Android(4283249719)

Conversions

Conversions Part 1

Format	Color
Hex	4D3437
RGB	77, 52, 55
RGB Percent	30%, 20%, 22%
CMY	0.6980, 0.7961, 0.7843
CMYK	0.00, 0.32, 0.29, 0.70
HSL	353°, 19%, 25%
HSV	353°, 32%, 30%
XYZ	4.9781, 4.3096, 4.1839
YIQ	59.8170, 13.9370, 6.2330

Conversions

Conversions Part 2

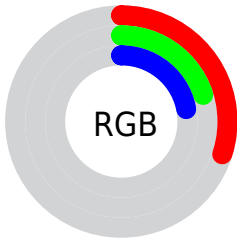
Format	Color
R_{YB}	77, 52, 55
Decimal	5059639
CIE _{Lab}	24.67, 11.77, 2.63
CIE _{LCh}	25, 12.064, 12.594
Yxy	4.3096, 0.3695, 0.3199
Android (android.graphics.Color)	4283249719 (0xFF4D3437)
YUV	59.8170, -2.3748, 15.0695
Hunter-Lab	20.7596, 6.4751, 2.5824

Details

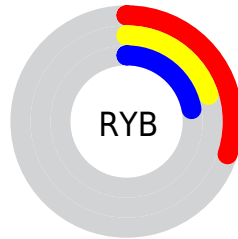
The Android color **4283249719** is a dark color, and the websafe version is hex **333333**. A complement of this color would be **4281617738**, and the grayscale version is **4282137660**.

A 20% lighter version of the original color is **4286538598**, and **4280354827** is the 20% darker color. If you saturate the color by 10%, you get **4283247664**, and if you desaturate by 10%, it is **4283251774**.

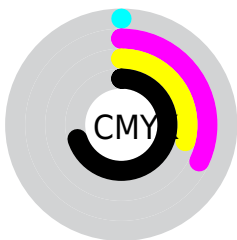
Distribution



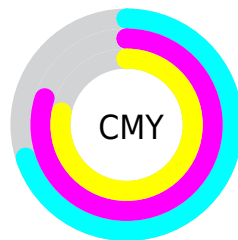
- Red (30%)
- Green (20%)
- Blue (22%)



- Red (30%)
- Yellow (20%)
- Blue (22%)



- Cyan (0%)
- Magenta (32%)
- Yellow (29%)
- Black (70%)



- Cyan (70%)
- Magenta (80%)
- Yellow (78%)

Brightness & Saturation Gradients

These gradients show how the Android color 4283249719 changes by changing the brightness by 10 percent. The first figure shows a shift by +10% for each color and the second figure -10%.

Similar to the brightness gradients but the following saturation gradients show a change of the Android color 4283249719 by changing the saturation by 10% instead.



4283249719



4283249719

4294967295



4281736994



4286538598



4280354827



4288248959



4278190080



4290025113



4291866803



4293709007



4294961387



4283249719



4283249719



4283247664



4283251774

■ 4283245865

■ 4283253573

■ 4283243811

■ 4283255627

■ 4283241756

■ 4283257682

■ 4283239957

■ 4283259481

■ 4283237902

■ 4283261536

■ 4283236361

■ 4283263590

■ 4283265645

■ 4283267444

Harmonies

Analogous

The Analogous color harmony consists of three colors that are next to each other on the color wheel.



4282987840



4283249719



4283184431

Triad

The Triadic color harmony groups three colors that are evenly spaced from another and form a triangle on the color wheel.



4283249719



4281548333



4280827212

Complementary

The Complementary color scheme is a pair of colors which are on the opposite of each other on the color wheel.



4283249719



4281617738

Split Complementary

Split-complementary colors differ from the complementary color scheme. The scheme consists of three colors, the original color and two neighbors of the complement color.



4280303431



4283249719



4280893237

Square

The Square scheme is like the rectangle color scheme, but the four colors are evenly spaced on the color wheel.



4283249719



4282202921



4280369214



4281678412

Rectangle

The Rectangle color scheme consists of four colors that form a rectangle on the color wheel.



4283249719



4282922795



4280369214



4280630858

Sweetspot

The Sweet Spot groups the original color and five complimentary colors.



4283249719



4284701275



4283053133



4281543982



4289967027



4281545523

Same Dimension

The Same Dimension uses a secret algorithm to generate beautiful new colors.



4283249719



4284693825



4283252020



4280689187



4284874764



4293263388

Inverse Universe

The Inverse Universe completely reimagines the original color for something new.



4283249719



4284693825



4281615437



4280689187



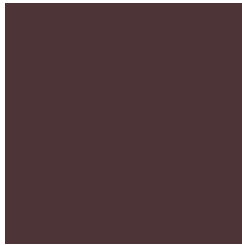
4284874764



4293263388

Previews

White Background



This preview shows how the Android color 4283249719 looks on a white background.

Color Contrast Check

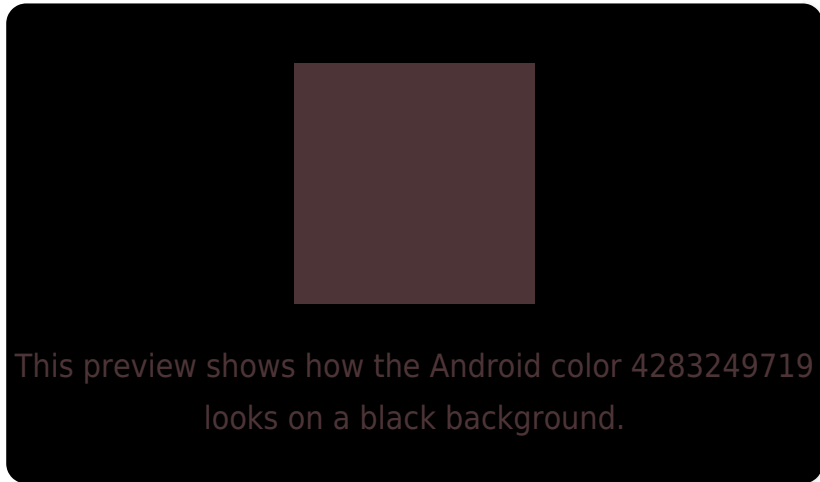
Large Text (above 18pt) WCAG AA ✓ Pass

Any Text WCAG AA ✓ Pass

Large Text (above 18pt) WCAG AAA ✓ Pass

Any Text WCAG AAA ✓ Pass

Black Background



Color Contrast Check

Large Text (above 18pt) WCAG AA × Fail

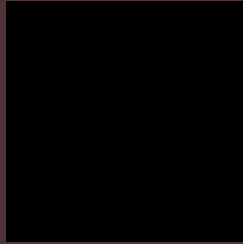
Any Text WCAG AA × Fail

Large Text (above 18pt) WCAG AAA × Fail

Any Text WCAG AAA × Fail

If you want to check with other color combinations, try the [Color Contrast Checker](#).

Android 4283249719 Background



This preview shows how black text looks on a background with the Android color 4283249719.

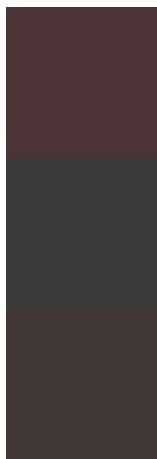


This preview shows how white text looks on a background with the Android color 4283249719.

Color Blindness Simulation

Color vision deficiency is a very complex topic, and I could not describe the different causes any better than Wikipedia does, so if you want to learn more, you should check out their [article about color blindness](#).

Dichromacy

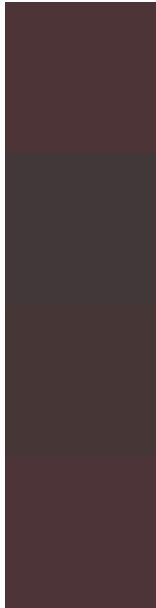


Original Color
4283249719

Protanopia
4282137403

Deuteranopia
4282530102

Trichromacy



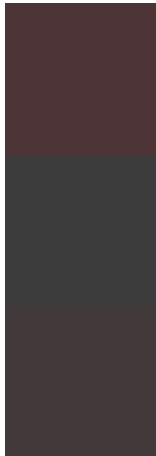
Original Color
4283249719

Protanomaly
4282529850

Deuteranomaly
4282791734

Tritanomaly
4283249720

Monochromacy



Original Color
4283249719

Achromatopsia
4282137660

Achromatomaly
4282530106

CSS Examples

Text

The CSS property to change the color of the text to Android 4283249719 is called "color". The color property can be set on classes, ids or directly on the HTML element.

This example shows how text in the color `rgb(77, 52, 55)` looks like.

```
.text, #text, p{  
    color:rgb(77, 52, 55)  
}
```

If you want to add a text shadow in that color use the text-shadow property, you can generate a text shadow directly with our [CSS Text Shadow Generator](#).

Here you see how black text with a 4 pixel rgb(77, 52, 55) colored shadow looks like.

```
.shadow{ text-shadow: 4px 4px 2px rgb(77, 52, 55) }
```

Border

The CSS property to change the border of an element to Android 4283249719 is called "border". The border property can be set on classes, ids or directly on the HTML element.

This example shows the color as border, it can be applied via the CSS property "border" or "border-color".

```
.border, #border, table{ border:4px solid rgb(77, 52, 55) }
```

If only the border color should be changed use the property `border-color`.

```
.border{ border-color:rgb(77, 52, 55) }
```

If you want to add a box shadow in that color use:

Here you see how a box with a 4 pixel `rgb(77, 52, 55)` colored shadow looks like.

```
.boxshadow{ -moz-box-shadow:4px 4px 4px  
4px rgb(77, 52, 55); -webkit-box-  
shadow:4px 4px 4px 4px rgb(77, 52, 55);  
box-shadow:4px 4px 4px 4px rgb(77, 52, 55)  
}
```

Background

The CSS property to change the background color of an element to Android 4283249719 is called "background". The background property can be set on classes, ids or directly on the HTML element.

```
.background, #background, body{  
background: rgb(77, 52, 55) }
```

If only the background color should be changed can be used:

```
.background{ background-color: rgb(77, 52,  
55) }
```

This example shows the color as background, it is applied via the CSS property "background".

To optimize and compress your CSS code, you can use our [online CSS compressor and optimizer](#) based on csstidy. If you want to create a linear or radial gradient as background or border, check our [CSS Gradient Generator](#).

Hey! You found this booklet interesting? Support Converting Colors with the new Membership Option!

The pro membership hides all ads, plus gives you double the colors in the color bucket, and more awesome pro features!

[Learn more, Memberships starting at \\$2.50/m!](#)

**Follow me
on Twitter!**

@ConvertingColor